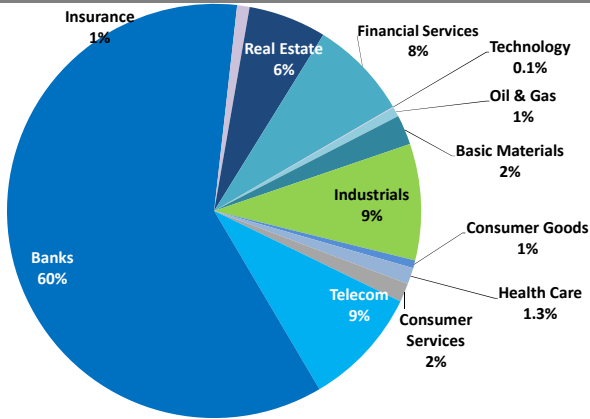


Boursa Kuwait Daily Report

December 11, 2019

Sector Weight by Market Cap



Market Capitalization - Sector Returns

	Market Cap. (KWD Mn)	DTD % Chg	MTD % Chg	YTD % Chg
Boursa Kuwait	35,280.2	▼ (0.0%)	2.9%	21.6%
Oil & Gas	269.5	▼ (0.0%)	6.9%	18.4%
Basic Materials	825.7	▼ (0.2%)	(2.2%)	(19.9%)
Industrials	3,205.3	▲ 0.0%	1.9%	(5.8%)
Consumer Goods	211.9	▼ (0.6%)	0.4%	3.8%
Health Care	452.1	= 0.0%	0.0%	(3.7%)
Consumer Services	519.4	▼ (0.1%)	(0.3%)	1.5%
Telecommunications	3,281.9	▼ (0.2%)	(0.9%)	20.8%
Banks	21,261.6	▲ 0.1%	4.5%	32.1%
Insurance	340.3	▼ (0.0%)	0.1%	(5.5%)
Real Estate	2,150.6	▼ (0.3%)	1.4%	15.4%
Financial Services	2,740.7	▼ (0.2%)	0.6%	30.7%
Technology	21.3	▼ (2.3%)	3.8%	(21.9%)

Top 10 Companies by Market Capitalization

Company Name	Market Cap. (Mn KWD)	P/E (X)	ROE* (%)
1- National Bank of Kuwait	6,752.3	16.9	12.1%
2- Kuwait Finance House	5,532.4	22.2	12.5%
3- Ahli United Bank - Bahrain	2,606.0	11.8	17.9%
4- Zain	2,509.7	11.8	16.7%
5- Boubyan Bank	1,739.1	28.5	10.8%
6- Agility (PWC Logistics)	1,371.6	16.0	8.2%
7- Commercial Bank of Kuwait	1,025.9	15.7	9.1%
8- Gulf Bank	884.0	17.3	8.0%
9- Mabane Co.	867.4	15.6	12.1%
10- Burgan Bank	813.8	10.3	10.6%
Total	24,102	16.27	12.3%

*: ROE is calculated based on TTM 9M-2019 net profit & shareholders' equity as of 30-September-19

Top Movers and Most Active Stocks

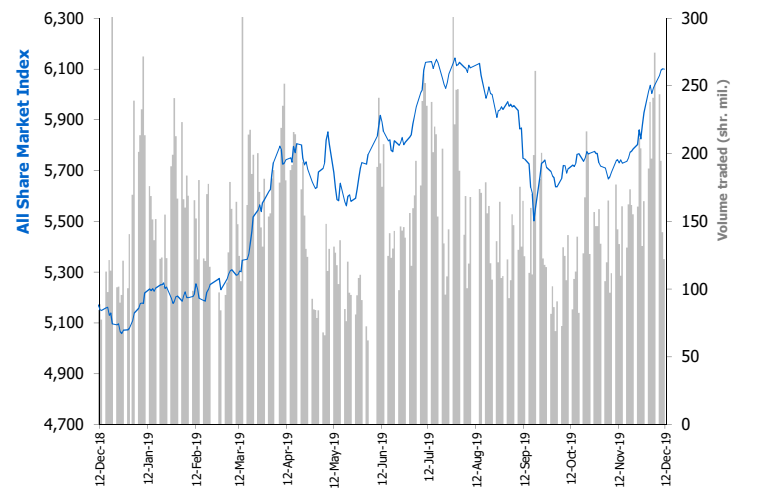
Today's Top % Gainers	Close (KWD)	Change (KWD)	Percent Change
United Projects Group	0.484	0.044	10.0%
KAMCO Investment Co.	0.090	0.007	8.4%
UniCap Investment and Finance	0.047	0.003	7.1%
Al-Argan International Real Estate Co.	0.100	0.006	5.8%
The Energy House Co.	0.029	0.001	4.3%

Today's Top % Losers	Close (KWD)	Change (KWD)	Percent Change
Bayan Investment Co.	0.036	(0.004)	(9.0%)
Kuwait Foundry Co.	0.335	(0.027)	(7.5%)
Automated Systems Co.	0.065	(0.005)	(7.1%)
Gulf Investment House	0.059	(0.004)	(6.7%)
Tamdeen Real Estate Co.	0.281	(0.018)	(6.0%)

Today's Most Active by Volume	Close (KWD)	Percent Change	Volume (Shares)
Ahli United Bank - Bahrain	0.297	0.0%	9,239,129
Kuwait Finance House	0.793	0.0%	9,047,646
A'ayan Leasing & Investment Co.	0.045	(4.0%)	7,505,262
The Securities House Co.	0.047	(2.9%)	6,408,268
Kuwait International Bank	0.277	(1.4%)	5,484,124

Market Breadth	44	62	69
Benchmark Return	Closing Value	DTD Chg	MTD % Chg
Premier Market Index	6,749.89	1.2	3.5%
Main Market Index	4,814.50	(7.6)	1.0%
All Share Market Index	6,099.06	(1.6)	2.9%
Market Cap (KWD Mn)	35,280.19	(11.1)	2.9%

Index Performance relative to Volume



Market Trading Data and Volatility

Trading Indicators	Today's Value	DTD Chg	DTD % Chg	Average Daily YTD 2019	Average Daily YTD 2018
Volume (Shrs Mn)	122.0	(20.02)	(14.1%)	155.9	86.6
Value Traded (KWD Mn)	26.3	(5.9)	(18.3%)	31.4	16.1
No. of Trades	6,843	(1,353)	(16.5%)	6,102	3,754

Today's Most Active by Value	Close (KWD)	Percent Change	Value (KWD)
Kuwait Finance House	0.793	0.0%	7,149,086
Ahli United Bank - Bahrain	0.297	0.0%	2,735,204
National Bank of Kuwait	1.035	0.1%	1,767,504
Kuwait International Bank	0.277	(1.4%)	1,527,753
Warba Bank	0.286	(1.0%)	1,479,927

Boursa Kuwait - Premier Market

Wednesday, December 11, 2019

Premier Market Stocks	Closing Price			Market Capitalization			Valuation Multiples				ROE	YTD-19 Price Return	YTD-19 Trading Indicators	
	KWD	DTD Chg. (KWD)	D-T-D Return	KWD Mn	Weight in Premier Index	Weight in Boursa Kuwait	P/E (X)	P/BV (X)	Yield	Beta			Volume (Mn Shrs)	Value (KWD Mn)
▲ National Bank of Kuwait	1.035	0.001	0.1%	6,752	25.7%	19.1%	16.9	2.04	3.2%	1.31	12.1%	30.3%	1,096.18	1,035.55
▲ Gulf Bank	0.290	0.002	0.7%	884	3.4%	2.5%	17.3	1.39	3.3%	0.93	8.0%	15.1%	2,353.79	686.44
▼ Kuwait International Bank	0.277	(0.004)	(1.4%)	299	1.1%	0.8%	16.4	1.08	3.4%	0.99	6.6%	9.1%	912.26	258.04
▼ Burgan Bank	0.310	(0.003)	(1.0%)	814	3.1%	2.3%	10.3	1.09	3.7%	0.98	10.6%	17.1%	709.32	232.11
= Kuwait Finance House	0.793	0.000	0.0%	5,532	21.1%	15.7%	22.2	2.77	2.3%	1.60	12.5%	42.8%	1,709.87	1,182.55
▲ Boubyan Bank	0.603	0.004	0.7%	1,739	6.6%	4.9%	28.5	3.07	1.1%	0.95	10.8%	30.0%	223.52	127.87
= Kuwait Projects Co. (Holding)	0.219	0.000	0.0%	438	1.7%	1.2%	14.3	1.27	4.1%	0.74	8.9%	5.3%	219.96	47.89
▼ Mabane Co.	0.832	(0.004)	(0.5%)	867	3.3%	2.5%	15.6	1.89	1.4%	1.04	12.1%	45.5%	151.40	106.92
▼ National Industries Group (Holding)	0.240	(0.002)	(0.8%)	343	1.3%	1.0%	14.7	0.95	4.8%	1.35	6.5%	59.5%	1,407.50	310.60
▲ Boubyan Petrochemical Co.	0.699	0.002	0.3%	374	1.4%	1.1%	32.9	1.42	7.0%	0.71	4.3%	(28.3%)	90.90	75.60
▼ Qurain Petrochemicals Industries Co.	0.311	(0.001)	(0.3%)	342	1.3%	1.0%	7.5	0.81	4.9%	0.66	10.7%	(13.6%)	129.15	44.85
▲ Agility Public Warehousing Co.	0.778	0.003	0.4%	1,372	5.2%	3.9%	16.0	1.31	1.6%	1.47	8.2%	11.6%	326.58	253.59
▼ Mobile Telecommunications Co.	0.580	(0.001)	(0.2%)	2,510	9.6%	7.1%	11.8	1.97	5.2%	1.62	16.7%	29.2%	927.90	487.34
▲ Human Soft Holding Co.	3.110	0.037	1.2%	380	1.4%	1.1%	10.8	5.38	5.9%	0.42	50.0%	(5.2%)	32.41	103.59
= GFH Financial Group (B.S.C)	0.072	0.000	0.0%	263	1.0%	0.7%	7.5	0.81	6.0%	1.09	10.7%	(6.9%)	302.91	22.59
= Ahli United Bank (B.S.C)	0.297	0.000	0.0%	2,606	9.9%	7.4%	11.8	2.10	3.9%	0.83	17.9%	61.7%	2,893.12	755.36
▼ Warba Bank	0.286	(0.003)	(1.0%)	429	1.6%	1.2%	25.6	2.03	0.0%	0.92	7.9%	36.2%	798.98	197.08
▼ Mezzan Holding Co.	0.543	(0.004)	(0.7%)	169	0.6%	0.5%	19.3	1.53	2.9%	0.54	7.9%	8.6%	38.46	18.66
= Integrated Holding Co.	0.535	0.000	0.0%	118	0.4%	0.3%	11.5	1.74	7.5%	0.49	15.1%	(36.3%)	92.61	50.47
Subtotal- Premier Market Stocks	6,099.06	(1.64)	-0.03%	26,230	100%	74%	15.9	1.91	3.14%		12.0%	20.1%	14,416.84	5,997.10
Remaining of the Market				9,050		26%	17.6	0.85	4.35%		4.8%		22,371.67	1,418.86

Boursa Kuwait Daily Bulletin

Wednesday, December 11, 2019

Company	Reuters Ticker	Valuation Multiples				Price (KWD)		MKT Cap (KWD Mn.)	52 Weeks High (KWD)	52 Weeks Low (KWD)	YTD-19 Return #	Daily Trading Data		YTD-19	
		Trailing P/E (X)	Trailing P/BV (X)	Dividend Yield	Beta	Closing	DTD Change					Volume (Shrs.)	Value (KWD)	Capital Turnover	ROE
▼ Senergy Holding Co.	SENE.KW	NM	0.32	0.00%	1.38	0.022	(0.001)	4.5	0.034	0.016	(27.3%)	70,130	1,579	14.8%	NM
= Independent Petroleum Group	IPGK.KW	15.0	0.92	4.95%	0.34	0.465	0.000	87.6	0.490	0.379	16.0%	0	0	3.0%	6.1%
= National Petroleum Services Co.	NAPS.KW	10.2	3.29	5.43%	0.20	1.251	0.000	125.1	1.389	0.850	36.0%	0	0	0.8%	32.3%
▲ The Energy House Co.	ENER.KW	NM	0.87	0.00%	0.93	0.029	0.001	22.1	0.047	0.017	(19.0%)	851,300	23,424	5.4%	NM
= Gulf Petroleum Investment	GPIK.KW	NM	0.22	0.00%	1.21	0.020	0.000	9.1	0.033	0.016	(32.2%)	816,263	16,368	170.3%	NM
▼ Burgan Co. for Drilling, Tdg. & Maint. *	ABAR.KW	14.6	0.33	0.00%	NA	0.088	(0.004)	21.2	0.110	0.064	(7.9%)	2,500	219	0.6%	2.3%
Oil & Gas		20.2	0.97	4.13%				269.5			18.4%	1,740,193	41,590		4.8%
▼ Kuwait Foundry Co.	KFDC.KW	32.9	1.11	25.40%	0.42	0.335	(0.027)	24.2	0.615	0.320	(17.6%)	110	37	34.1%	3.4%
▲ Boubyan Petrochemicals Co.*	BPCC.KW	32.9	1.42	6.96%	0.71	0.699	0.002	373.8	1.033	0.673	(28.3%)	1,298,791	912,620	17.0%	4.3%
= Al Kout for Industrial Projects Co.	ALKK.KW	14.1	2.77	5.88%	0.05	0.850	0.000	85.8	0.850	0.840	1.2%	0	0	0.0%	19.7%
▼ Qurain Petrochemical Industries Co. *	ALQK.KW	7.5	0.81	4.87%	0.66	0.311	(0.001)	341.8	0.403	0.303	(13.6%)	266,187	82,967	11.7%	10.7%
Basic Materials		13.0	1.12	6.52%				825.7			(19.9%)	1,565,088	995,624		8.6%
▲ Specialities Group Holding Co.	SPEC.KW	7.2	0.40	0.00%	0.35	0.077	0.002	11.5	0.082	0.061	12.6%	25,100	1,883	40.6%	5.6%
▼ Kuwait Cement Co.	KCEM.KW	36.5	0.86	6.18%	0.42	0.236	(0.009)	173.1	0.380	0.230	(37.7%)	77,861	18,375	0.6%	2.3%
▼ Gulf Cable & Electrical Ind. Co.	CABL.KW	18.6	0.60	5.65%	1.05	0.478	(0.003)	100.3	0.512	0.346	36.2%	37,152	17,759	56.4%	3.2%
▼ Heavy Eng'g Ind. & Shipbuilding Co.	SHIP.KW	7.0	1.25	7.33%	0.46	0.409	(0.001)	73.7	0.446	0.372	(5.3%)	221,010	90,253	70.1%	18.0%
= Kuwait Portland Cement Co.	PCEM.KW	11.3	1.41	10.21%	0.50	0.979	0.000	98.1	1.459	0.950	(14.0%)	39,772	38,980	14.0%	12.4%
= Shuaiba Industrial Co.	PAPE.KW	27.7	0.87	6.36%	0.21	0.155	0.000	15.6	0.200	0.132	(17.6%)	0	0	0.9%	3.2%
▼ Metal & Recycling Co.	MRCK.KW	NM	0.25	0.00%	NA	0.030	(0.001)	3.0	0.089	0.012	(52.4%)	45,000	1,377	0.9%	NM
▲ ACICO Industries Co.	ACIC.KW	17.5	0.41	3.86%	0.39	0.129	0.001	41.0	0.175	0.121	(22.8%)	174,455	22,420	9.9%	2.4%
= Hilal Cement Co.	HCKK.KW	43.1	0.74	15.79%	0.17	0.095	0.000	9.6	0.146	0.067	(15.2%)	2,500	238	1.0%	1.7%
= National Industries Co.	NIBM.KW	15.6	0.73	5.80%	0.19	0.166	0.000	59.8	0.202	0.160	(17.0%)	0	0	1.0%	4.7%
▼ Equipment Holding Co.	EQUI.KW	NM	0.41	0.00%	1.32	0.020	(0.000)	2.7	0.032	0.015	(25.9%)	451,684	9,122	63.2%	NM
▼ National Co. for Consumer Industries	NCCI.KW	55.2	0.39	0.00%	NA	0.035	(0.025)	3.2	0.065	0.010	(20.5%)	500	18	1.3%	0.7%
▲ Salbookh Trading Co.	SALB.KW	NM	0.61	0.00%	0.79	0.048	0.002	5.0	0.052	0.035	19.3%	2,605,075	122,941	79.7%	NM
▲ Agility (PWC Logistics)	AGLT.KW	16.0	1.31	1.58%	1.47	0.778	0.003	1,371.6	0.834	0.652	11.6%	428,533	332,396	18.5%	8.2%
▼ Educational Holding Group*	EDUK.KW	13.4	2.44	3.55%	0.14	0.422	(0.005)	103.5	0.475	0.285	36.1%	60,981	26,121	1.8%	18.3%
▼ National Cleaning Co.	CLEA.KW	8.3	0.41	8.23%	0.92	0.059	(0.001)	14.7	0.074	0.053	2.8%	2,500	148	8.3%	4.9%
▲ Kuwait & Gulf Link Transport Co.	KGLK.KW	18.6	0.26	7.81%	0.91	0.061	0.001	16.9	0.104	0.058	(36.4%)	175,634	10,518	23.4%	1.4%
▼ Kuwait Co. For Process Plant Const. & Cont.	KPCP.KW	6.1	1.03	7.32%	0.33	0.264	(0.001)	26.5	0.274	0.189	14.8%	134,430	35,613	11.0%	17.0%
▲ Humansoft Holding Co.	HUMN.KW	10.8	5.38	5.92%	0.42	3.110	0.037	380.2	3.500	2.910	(5.2%)	19,865	61,617	26.5%	50.0%
▲ Gulf Franchising Co.	GFCI.KW	NM	0.74	0.00%	NA	0.055	0.004	2.2	0.188	0.001	(21.1%)	63,011	3,478	0.4%	NM
▲ National Shooting Co.	SHOOTING.KW	NM	0.13	0.00%	1.67	0.009	0.000	2.5	0.018	0.008	(43.8%)	284,125	2,413	21.1%	NM
= Combined Group Contracting Co.	CGCK.KW	7.7	0.86	8.07%	0.08	0.247	0.000	40.4	0.330	0.177	(22.8%)	593,100	146,047	148.2%	11.2%
▲ United Projects Group	UPAC.KW	8.3	1.08	3.35%	0.03	0.484	0.044	79.6	0.640	0.362	(23.8%)	24,000	10,878	0.7%	13.0%
▼ ALAFCO Aviation Lease & Finance Co.*	ALAF.KW	14.5	0.81	3.70%	0.41	0.270	(0.005)	257.1	0.360	0.217	(22.6%)	31,642	8,603	14.0%	5.5%
▼ Mubarrad Holding Co.	MBRD.KW	8.0	0.55	7.17%	0.84	0.069	(0.002)	11.2	0.080	0.054	5.5%	4,091,300	282,102	61.1%	6.9%
▼ KGL Logistics Co.	LOGK.KW	5.7	0.26	0.00%	0.78	0.036	(0.000)	26.8	0.043	0.034	(9.9%)	657,699	23,810	51.5%	4.6%
= Integrated holding Co.	INTEGRATED.KW	11.5	1.74	7.48%	0.49	0.535	0.000	117.7	0.871	0.360	(36.3%)	239,752	127,990	42.1%	15.1%
▲ Sharjah Cement Co.	SCEM.KW	22.9	0.29	14.41%	0.41	0.056	0.001	33.8	0.087	0.050	(36.1%)	500	28	2.0%	1.3%
= Gulf Cement Co.	GCEM.KW	NM	0.56	14.04%	0.38	0.057	0.000	46.8	0.075	0.049	(16.1%)	0	0	1.5%	NM
= Umm Al-Qaiwain General Investments Co.	QIC.KW	15.8	0.54	8.86%	0.28	0.079	0.000	28.7	0.091	0.052	18.8%	6,980	518	1.2%	3.4%
= Fujairah Cement Industries Co.	FCEM.KW	20.6	0.20	12.50%	0.55	0.048	0.000	17.1	0.064	0.044	(24.4%)	15,000	719	8.4%	1.0%
▼ Ras-Al-Khaimah for White Cement Co.	RKWC.KW	22.4	0.51	7.92%	0.19	0.063	(0.003)	31.6	0.081	0.053	(15.8%)	34,200	2,156	0.9%	2.3%
Industrials		14.5	1.03	4.22%				3,205.3			(5.8%)	10,543,361	1,398,520		7.1%

Boursa Kuwait Daily Bulletin

Wednesday, December 11, 2019

Company	Reuters Ticker	Valuation Multiples				Price (KWD)		MKT Cap (KWD Mn.)	52 Weeks High (KWD)	52 Weeks Low (KWD)	YTD-19 Return #	Daily Trading Data		YTD-19	
		Trailing P/E (X)	Trailing P/BV (X)	Dividend Yield	Beta	Closing	DTD Change					Volume (Shrs.)	Value (KWD)	Capital Turnover	ROE
= Palms Agro Production Co.	PAPK.KW	NM	0.31	24.84%	0.29	0.040	0.000	2.1	0.076	0.025	(33.0%)	0	0	0.9%	NM
= Livestock Transport & Trading Co.	CATT.KW	NM	1.00	2.68%	0.39	0.180	0.000	39.0	0.201	0.165	(4.3%)	0	0	2.4%	NM
= Danah Alsafat Foodstuff Co.	DANK.KW	NM	0.34	0.00%	0.57	0.016	0.000	1.7	0.048	0.015	(58.8%)	1,247	20	155.0%	NM
▼ Mezzan Holding Co.	MEZZ.KW	19.3	1.53	2.89%	0.54	0.543	(0.004)	169.0	0.645	0.401	8.6%	22,016	11,634	12.4%	7.9%
Consumer Goods		79.1	1.31	3.05%				211.9			3.8%	23,263	11,654		1.7%
= Advanced Technology Co.	ATCK.KW	41.0	2.32	1.67%	NA	0.900	0.000	135.0	0.930	0.900	(10.0%)	0	0	0.0%	5.7%
= Yiacco Medical Co.	YIAC.KW	NM	6.05	0.00%	0.56	0.067	0.000	12.1	0.118	0.067	(37.9%)	0	0	0.0%	NM
= Al-Maidan Clinic For Oral Health Services Co.	MIDAN.KW	NM	8.36	0.41%	0.00	1.220	0.000	305.0	1.260	1.080	1.7%	0	0	0.2%	1.1%
Health Care		NM	4.68	0.77%				452.1			(3.7%)	0	0		NM
= Kuwait National Cinema Co.	KCIN.KW	9.8	1.09	5.58%	0.16	0.825	0.000	83.4	1.090	0.750	(22.8%)	0	0	0.9%	11.0%
= Kuwait Hotels Co.	KHOT.KW	NM	1.17	0.00%	NA	0.100	0.000	5.8	0.100	0.053	(23.1%)	0	0	0.0%	NM
= Sultan Center Food Products Co.	SCFK.KW	NM	0.73	0.00%	0.68	0.052	0.000	30.2	0.062	0.036	(1.1%)	375,000	19,567	14.8%	NM
= Kuwait Cable Vision Co.	KWTV.KW	NM	0.59	0.00%	0.37	0.016	0.000	0.6	0.032	0.010	(20.0%)	0	0	3.0%	NM
▲ IFA Hotels & Resorts Co.*	IFAH.KW	NM	1.04	0.00%	0.13	0.052	0.000	33.2	0.090	0.039	(41.2%)	24,782	1,208	0.7%	NM
= Oula Fuel Marketing Co.	OULA.KW	12.3	0.70	4.10%	0.44	0.120	0.000	48.5	0.132	0.113	1.7%	3,053	366	5.3%	5.7%
▲ Kuwait Resorts Co.	MUNK.KW	10.0	0.45	7.92%	0.71	0.063	0.001	12.4	0.067	0.050	12.1%	1,987,908	124,855	52.7%	4.5%
▼ Jazeera Airways Co.	JAZK.KW	15.1	5.27	3.23%	0.28	1.084	(0.005)	216.8	1.110	0.700	48.5%	2,502	2,704	15.6%	34.8%
= Soor Fuel Marketing Co.	SOOR.KW	13.9	0.76	4.16%	0.39	0.119	0.000	48.2	0.129	0.114	3.5%	9,433	1,123	5.0%	5.5%
▼ Future Kid Entertainment and R.E Co.	KIDK.KW	24.0	0.57	12.07%	NA	0.098	(0.002)	11.4	0.135	0.075	3.2%	61,000	5,978	3.3%	2.4%
= Al Rai Media Group Co.	ALRA.KW	NM	0.58	NM	0.47	0.034	0.000	7.9	0.066	0.029	(44.1%)	1,000	34	5.5%	NM
▲ Jiyad Holding Co	JIYAD.KW	10.2	0.38	0.00%	0.64	0.041	0.000	14.4	0.080	0.038	(42.7%)	20,001	809	45.8%	3.7%
▼ Al Eid Food Co.	ALEID.KW	4.7	0.38	0.00%	0.03	0.066	(0.000)	6.6	0.081	0.039	(0.5%)	100,000	6,544	6.4%	8.1%
Consumer Services		NM	1.16	4.54%				519.4			1.5%	2,584,679	163,188		NM
▼ Zain	ZAIN.KW	11.8	1.97	5.17%	1.62	0.580	(0.001)	2,509.7	0.603	0.442	29.2%	2,027,006	1,174,825	21.4%	16.7%
▼ National Mobile Telecom Co.	OORE.KW	10.6	0.69	6.41%	0.51	0.775	(0.004)	390.6	0.783	0.640	8.5%	1,713	1,324	2.3%	6.6%
▼ AAN digital services Co.	AAN.KW	15.4	0.42	0.00%	1.57	0.014	(0.001)	12.5	0.021	0.010	(17.8%)	312,717	4,586	54.1%	2.8%
= Kuwait Telecommunication Co.	VIVA.KW	8.3	1.81	5.41%	0.69	0.739	0.000	369.1	0.899	0.705	(7.6%)	89,577	66,531	2.3%	21.9%
Telecommunications		11.1	1.58	5.33%				3,281.9			20.8%	2,431,013	1,247,266		14.2%
▲ National Bank of Kuwait	NBKK.KW	16.9	2.04	3.17%	1.31	1.035	0.001	6,752.3	1.034	0.788	30.3%	1,710,333	1,767,504	16.8%	12.1%
▲ Gulf Bank	GBKK.KW	17.3	1.39	3.28%	0.93	0.290	0.002	884.0	0.330	0.251	15.1%	3,917,302	1,128,281	77.2%	8.0%
▲ Commercial Bank of Kuwait	CBKK.KW	15.7	1.43	3.51%	0.68	0.515	0.001	1,025.9	0.650	0.427	13.3%	189,220	97,164	2.6%	9.1%
▼ Ahli Bank of Kuwait	ABKK.KW	14.0	0.73	5.28%	0.61	0.263	(0.001)	425.8	0.350	0.260	(10.8%)	1,009,188	262,989	3.3%	5.2%
▲ Ahli United Bank - Kuwait	BKME.KW	12.8	1.53	3.86%	0.78	0.333	0.002	686.9	0.365	0.280	17.7%	66,944	22,287	6.7%	11.9%
▼ Kuwait International Bank	KIBK.KW	16.4	1.08	3.44%	0.99	0.277	(0.004)	298.8	0.330	0.248	9.1%	5,484,124	1,527,753	84.6%	6.6%
▼ Burgan Bank	BURG.KW	10.3	1.09	3.68%	0.98	0.310	(0.003)	813.8	0.386	0.264	17.1%	2,188,537	679,896	27.0%	10.6%
= Kuwait Finance House	KFH.KW	22.2	2.77	2.27%	1.60	0.793	0.000	5,532.4	0.800	0.537	42.8%	9,047,646	7,149,086	24.5%	12.5%
▲ Boubyan Bank	BOUK.KW	28.5	3.07	1.10%	0.95	0.603	0.004	1,739.1	0.622	0.520	30.0%	1,792,039	1,081,925	7.8%	10.8%
▼ Warba Bank	WARB.KW	25.6	2.03	0.00%	0.92	0.286	(0.003)	429.0	0.293	0.208	36.2%	5,133,863	1,479,927	53.3%	7.9%
= Ahli United Bank - Bahrain	AUBK.KW	11.8	2.10	3.91%	0.83	0.297	0.000	2,606.0	0.299	0.183	61.7%	9,239,129	2,735,204	33.0%	17.9%
= Ithmaar Bank	ITHMR.KW	NM	2.16	0.00%	1.39	0.022	0.000	67.6	0.030	0.019	(10.8%)	0	0	4.9%	NM
Banks		17.1	1.97	2.89%				21,261.6			32.1%	39,778,325	17,932,017		11.5%

Boursa Kuwait Daily Bulletin

Wednesday, December 11, 2019

Company	Reuters Ticker	Valuation Multiples				Price (KWD)		MKT Cap (KWD Mn.)	52 Weeks High (KWD)	52 Weeks Low (KWD)	YTD-19 Return #	Daily Trading Data		YTD-19	
		Trailing P/E (X)	Trailing P/BV (X)	Dividend Yield	Beta	Closing	DTD Change					Volume (Shrs.)	Value (KWD)	Capital Turnover	ROE
= Kuwait Insurance Co.	KINS.KW	6.5	0.66	7.11%	0.01	0.335	0.000	65.0	0.427	0.298	(6.9%)	0	0	2.7%	10.1%
= Gulf Insurance Group	GINS.KW	9.4	1.11	5.73%	0.03	0.601	0.000	112.4	0.730	0.585	(8.2%)	0	0	4.6%	11.8%
= Ahleiah Insurance Co.	AINS.KW	8.9	0.82	8.00%	0.18	0.430	0.000	86.0	0.450	0.401	0.7%	1,000	430	3.0%	9.2%
▼ Warba Insurance Co.	WINS.KW	7.6	0.29	0.00%	0.55	0.064	(0.000)	11.0	0.080	0.056	(3.2%)	205	12	3.1%	3.8%
= Kuwait Reinsurance Co.	KWRE.KW	7.0	0.57	2.97%	0.01	0.158	0.000	29.8	0.187	0.093	(14.1%)	0	0	0.4%	8.2%
= First Takaful Insurance Co.	FTIK.KW	5.1	0.42	0.00%	0.12	0.040	0.000	4.3	0.050	0.036	(9.3%)	51,000	2,063	1.9%	8.2%
= Wethaq Takaful Insurance Co.	WETH.KW	NM	0.27	0.00%	0.67	0.029	0.000	3.1	0.045	0.026	2.2%	0	0	15.4%	0.2%
= Bahrain Kuwait Insurance Co.	BKIK.KW	11.5	0.96	12.50%	0.04	0.200	0.000	28.6	N/A	N/A	0.0%	0	0	0.0%	8.4%
Insurance		8.4	0.76	6.58%				340.3			(5.5%)	52,205	2,506		9.1%
▼ Sokouk Holding Co.	SHCK.KW	NM	0.42	0.00%	1.38	0.035	(0.001)	20.5	0.048	0.029	(12.4%)	250,741	8,759	40.8%	NM
▲ Kuwait Real Estate Co.	KREK.KW	11.1	0.71	0.00%	1.28	0.100	0.001	94.7	0.104	0.053	92.8%	1,768,886	176,376	81.1%	6.3%
= United Real Estate Co.	UREK.KW	NM	0.36	0.00%	1.32	0.061	0.000	71.9	0.066	0.054	0.8%	61,241	3,699	3.1%	NM
▼ National Real Estate Co.	NREK.KW	12.7	0.46	0.00%	0.63	0.088	(0.001)	120.1	0.095	0.068	(3.1%)	1,250,846	110,793	27.9%	3.6%
▲ Salhia Real Estate Co.	SREK.KW	14.1	1.38	4.77%	0.33	0.404	0.013	207.1	0.410	0.313	22.4%	1,501,600	605,667	5.9%	9.8%
▼ Tamdeen Real Estate Co.	TAMK.KW	15.6	0.69	3.46%	0.25	0.281	(0.018)	121.4	0.400	0.266	(19.7%)	9,960	2,801	0.7%	4.4%
▼ Ajial Real Estate Entertainment Co.	AREC.KW	15.6	0.30	2.49%	0.35	0.200	(0.004)	37.0	0.224	0.123	48.1%	925,026	188,482	18.4%	1.9%
= Al Massaleh Real Estate Co.	MREC.KW	NM	0.42	0.00%	0.40	0.040	0.000	9.3	0.041	0.031	8.2%	0	0	4.0%	NM
▲ Arab Real Estate Co.	ARAB.KW	NM	0.27	0.00%	1.30	0.029	0.000	15.0	0.035	0.023	2.1%	1,827,325	53,756	45.7%	NM
▼ AL-Enma'a Real Estate Co.*	ENMA.KW	NM	0.66	0.00%	0.78	0.067	(0.000)	30.2	0.079	0.031	104.9%	115,951	7,811	104.5%	NM
▼ Mabaneer Co.	MABK.KW	15.6	1.89	1.36%	1.04	0.832	(0.004)	867.4	0.852	0.541	45.5%	405,799	337,227	14.5%	12.1%
▼ Injazat Real Estate Development Co.	INJA.KW	8.0	0.44	8.74%	0.48	0.078	(0.002)	27.0	0.091	0.074	(9.3%)	55	4	3.5%	5.5%
▲ Investors Holding Group Co.	INVK.KW	NM	0.19	0.00%	1.53	0.008	0.000	4.7	0.013	0.007	(37.7%)	415,744	3,103	152.4%	NM
= International Resorts Co.	IRCK.KW	1.5	0.17	0.00%	1.28	0.011	0.000	1.7	0.030	0.010	(50.9%)	8,050	89	5.7%	11.5%
▲ The Commercial Real Estate Co.	TIJK.KW	12.7	0.57	5.32%	0.75	0.095	0.001	166.5	0.102	0.083	3.3%	738,233	70,002	9.8%	4.5%
▲ Sanam Real Estate Co.	SANK.KW	NM	0.44	0.00%	0.47	0.035	0.001	4.2	0.050	0.030	(0.6%)	376,554	12,988	4.7%	NM
▲ A'ayan Real Estate Co.	AYRE.KW	4.5	0.44	6.55%	0.85	0.075	0.000	31.3	0.075	0.053	30.6%	10,000	752	20.6%	9.7%
= Aqar Real Estate Investment Co.	AQAR.KW	11.7	0.65	5.73%	NA	0.079	0.000	18.5	0.089	0.055	29.1%	0	0	8.2%	5.6%
= Kuwait Real Estate Holding Co.	ALAQ.KW	32.8	0.46	0.00%	0.96	0.026	0.000	4.9	0.032	0.022	3.2%	0	0	4.7%	1.4%
▼ MAZAYA Holding Co.	MAZA.KW	NM	0.49	13.14%	1.32	0.061	(0.002)	41.8	0.077	0.051	(13.4%)	1,229,518	74,757	60.3%	NM
= Tijara Real Estate & Investment Co.	TIJA.KW	14.9	0.45	4.17%	0.66	0.048	0.000	17.8	0.053	0.034	(2.0%)	0	0	4.9%	3.0%
= Al TAMEER Real Estate Investment Co.	AMAR.KW	29.3	0.37	0.00%	1.32	0.027	0.000	6.5	0.046	0.017	(3.2%)	168,753	4,504	199.1%	1.3%
▼ Arkan Al-Kuwait Real Estate Co. *	ARKK.KW	30.8	0.64	8.85%	0.32	0.090	(0.000)	22.7	0.091	0.073	8.3%	395,020	34,882	5.5%	2.1%
▲ Al-Argan International Real Estate Co.	ARGK.KW	54.0	0.30	4.82%	0.40	0.100	0.006	26.5	0.176	0.090	(26.5%)	5,600	555	0.9%	0.6%
▼ Abyaar Real Estate Development Co.	ABYR.KW	NM	0.18	0.00%	1.55	0.008	(0.000)	9.2	0.019	0.008	(45.4%)	1,540,012	12,804	122.7%	NM
▼ Munshaat Real Estate Projects Co.	MUNS.KW	NM	0.52	0.00%	0.97	0.076	(0.000)	24.5	0.108	0.065	(24.0%)	40,002	2,812	4.5%	NM
▼ First Dubai For Real Estate Development	FIRST.KW	NM	0.47	0.00%	1.53	0.035	(0.001)	34.9	0.042	0.026	(7.4%)	102,004	3,492	10.5%	0.5%
▼ Kuwait Business Town Real Estate Co.	KBTK.KW	9.2	0.38	6.90%	1.25	0.041	(0.001)	26.0	0.046	0.035	(3.8%)	343,282	14,200	10.8%	4.2%
= Real Estate Asset Management Co.	REAM.KW	NM	0.68	5.02%	0.03	0.094	0.000	10.4	0.200	0.086	(44.9%)	0	0	2.5%	NM
▲ MENA Real Estate Co. *	MENK.KW	4.2	0.28	0.00%	0.91	0.041	0.000	5.6	0.050	0.030	14.6%	4,170,720	169,451	331.7%	6.6%
▲ Al Mudon International Real Estate Co.	ALMK.KW	NM	0.18	0.00%	1.29	0.025	0.000	2.5	0.030	0.015	(14.6%)	141,100	3,390	119.3%	NM
= Real Estate Trade Centers Co.	MARA.KW	NM	0.15	0.00%	0.50	0.025	0.000	3.5	0.042	0.020	12.3%	985,100	21,617	25.1%	NM
▼ Kuwait Remal Real Estate Co.	REMAL.KW	NM	0.32	0.00%	1.01	0.023	(0.000)	7.1	0.050	0.019	(44.5%)	3,893,554	91,213	57.5%	NM
▲ Mashaer Holding Co.	MASHAER.KW	NM	0.61	0.00%	0.29	0.080	0.001	14.3	0.090	0.043	(5.0%)	165,125	13,002	218.4%	NM
= Effect Real Estate Co.	EFFECT.KW	NM	0.29	0.00%	0.80	0.021	0.000	1.7	0.026	0.009	125.3%	0	0	17.3%	NM
▲ Ajwan Gulf Real Estate Co.	AJWN.KW	NM	0.25	0.00%	0.48	0.014	0.000	2.9	0.020	0.011	(24.7%)	2,143,667	29,164	193.1%	NM
▼ Al Masaken Intl. Real Estate Dev. Co.	MASKN.KW	NM	0.50	0.00%	0.24	0.044	(0.001)	4.4	0.074	0.042	(30.4%)	139,796	6,129	0.7%	NM
= Dalqan Real Estate Co.	DALQ.KW	NM	2.71	0.00%	NA	0.350	0.000	17.5	N/A	N/A	0.0%	0	0	0.0%	2.1%
= Dar Al Thuraya Real Estate Co.	THURY.KW	15.2	1.12	0.00%	NA	0.120	0.000	17.6	0.198	0.110	(45.5%)	0	0	0.1%	7.4%
Real Estate		28.9	0.75	2.46%				2,150.6			15.4%	25,129,264	2,064,281		2.6%

Company	Reuters Ticker	Valuation Multiples				Price (KWD)		MKT Cap (KWD Mn.)	52 Weeks High (KWD)	52 Weeks Low (KWD)	YTD-19 Return #	Daily Trading Data		YTD-19	
		Trailing P/E (X)	Trailing P/BV (X)	Dividend Yield	Beta	Closing	DTD Change					Volume (Shrs.)	Value (KWD)	Capital Turnover	ROE
▲ Kuwait Investment Co.	KINV.KW	8.4	0.64	7.20%	0.65	0.138	0.001	76.1	0.147	0.117	6.2%	735,605	100,546	22.8%	7.6%
= Commercial Facilities Co.	FACI.KW	8.4	0.71	7.59%	0.55	0.212	0.000	113.8	0.213	0.172	21.1%	11,800	2,500	6.8%	8.4%
▼ Int'l Financial Advisors Co.	IFIN.KW	NM	0.65	0.00%	1.63	0.055	(0.000)	14.6	0.059	0.041	(27.9%)	280,627	15,154	122.3%	NM
▼ National Investment Co.	NINV.KW	13.8	0.63	4.94%	1.31	0.129	(0.001)	113.0	0.145	0.081	56.4%	660,203	85,186	31.6%	4.6%
= Kuwait Projects Co.(Holding)	KPRO.KW	14.3	1.27	4.15%	0.74	0.219	0.000	438.0	0.233	0.183	5.3%	368,464	80,687	11.0%	8.9%
▼ Coast Invest. & Development Co.	COAS.KW	NM	0.43	0.00%	1.81	0.036	(0.000)	22.8	0.045	0.030	9.6%	25,120	889	19.6%	0.0%
▼ The Securities House Co.	SECH.KW	NM	0.53	0.00%	1.25	0.047	(0.001)	21.2	0.062	0.039	(11.3%)	6,408,268	306,672	61.5%	0.1%
= Arzan Financial Group For Fin. & Invest.	ARZA.KW	4.8	0.19	0.00%	1.11	0.024	0.000	19.0	0.038	0.023	(20.5%)	14,121	332	184.9%	4.0%
▼ Kuwait Financial Centre	MARKZ.KW	28.9	0.50	5.22%	0.67	0.096	(0.000)	46.1	0.110	0.082	(4.2%)	170,142	16,276	19.1%	1.7%
▲ Kuwait & M.E. Financial Inv. Co.	KMEF.KW	NM	1.55	0.00%	0.82	0.091	0.001	24.1	0.108	0.029	185.3%	1,261,041	114,474	97.9%	1.5%
▲ Al-Aman Investment Co.	AMAN.KW	11.7	0.52	0.00%	0.78	0.059	0.001	8.9	0.081	0.048	21.4%	2,101,769	127,191	97.3%	4.5%
▲ First Investment Co.	OLAK.KW	NM	0.24	0.00%	0.94	0.033	0.000	21.2	0.043	0.028	(17.9%)	3,251,761	104,745	155.0%	NM
▼ Al-Mal Investment Co.	MALK.KW	NM	0.33	0.00%	1.59	0.009	(0.000)	2.7	0.022	0.008	(55.0%)	2,008,762	17,766	52.5%	NM
▼ Gulf Investment House	GIHK.KW	1.9	0.66	0.00%	1.03	0.059	(0.004)	23.9	0.064	0.040	230.3%	50,042	2,927	18.4%	34.4%
▼ A'ayan Leasing & Investment Co.	AAYA.KW	NM	0.47	0.00%	1.38	0.045	(0.002)	37.0	0.066	0.034	21.7%	7,505,262	348,400	331.2%	NM
▼ Bayan Investment Co.	BAYK.KW	NM	0.40	0.00%	1.58	0.036	(0.004)	14.3	0.051	0.032	(24.8%)	40,000	1,453	5.5%	NM
▼ Osoul Investment Co.	OSUL.KW	8.1	0.52	9.25%	0.40	0.072	(0.003)	11.3	0.082	0.060	19.2%	725	52	6.4%	6.4%
▼ Kuwait Finance & Investment Co.	KFSK.KW	70.1	0.42	0.00%	0.57	0.051	(0.001)	16.4	0.058	0.033	50.0%	186,188	9,277	64.4%	0.6%
▲ KAMCO Investment Co.	KAMC.KW	12.7	0.93	0.00%	0.09	0.090	0.007	30.8	0.110	0.067	30.4%	1	0	1.8%	7.3%
▲ National International Holding Co.	NIHK.KW	6.4	0.36	6.99%	0.95	0.066	0.003	14.3	0.081	0.051	6.6%	494,534	32,298	10.9%	5.7%
▲ UniCap Investment and Finance	UNICAP.KW	NM	0.50	6.35%	0.61	0.047	0.003	11.2	0.085	0.036	(40.6%)	4,809,332	222,137	37.1%	NM
▼ Al Madar Finance & Investment Co.	MADR.KW	6.1	1.01	0.00%	0.45	0.102	(0.001)	21.8	0.175	0.086	(38.9%)	25,012	2,532	118.1%	16.5%
▼ Al-Deera Holding	DEER.KW	4.8	0.72	0.00%	1.45	0.017	(0.000)	3.4	0.021	0.010	(8.1%)	519,801	8,749	30.7%	14.9%
▲ Al Salam Group Holding Co.	SAGH.KW	37.7	0.25	0.00%	1.57	0.028	0.001	7.6	0.043	0.025	(11.8%)	570,900	15,928	209.2%	0.7%
= Ekttitab Holding Co.	EKTT.KW	NM	0.35	0.00%	1.25	0.015	0.000	4.7	0.023	0.012	(29.2%)	5,375	79	18.8%	NM
▲ Al Madina For Finance & Investment Co.	MADI.KW	NM	0.50	0.00%	1.24	0.016	0.000	6.4	0.027	0.014	(23.9%)	304,471	4,705	129.5%	NM
▲ NOOR Financial Investment Co.	NOOR.KW	2.4	0.93	3.93%	0.74	0.127	0.003	52.5	0.141	0.061	65.1%	181,882	22,259	69.4%	39.1%
= Tamdeen Investment Co.	TAMI.KW	11.0	0.45	3.69%	0.12	0.324	0.000	111.8	0.359	0.232	15.7%	0	0	1.4%	4.1%
= Kuwait Bahrain Int'l Exchange Co.	EXCH.KW	8.9	0.60	0.00%	NA	0.086	0.000	4.0	N/A	N/A	0.0%	0	0	0.0%	6.7%
▼ Kuwait Syrian Holding Co.	KSHC.KW	NM	0.23	11.32%	1.40	0.027	(0.001)	4.7	0.082	0.022	(33.8%)	1,765,893	47,501	64.4%	NM
▼ Asiya Capital Investment Co.	ASIYA.KW	NM	0.41	0.00%	0.83	0.036	(0.001)	28.9	0.039	0.031	6.2%	164,612	6,003	5.6%	0.0%
▲ Gulf North Africa Holding Co.	GNAH.KW	NM	0.78	0.00%	1.53	0.058	0.001	8.7	0.063	0.046	18.4%	4,000	231	28.2%	NM
= Amwal International Investment Co.	AMWA.KW	9.8	0.66	0.00%	0.62	0.036	0.000	6.4	0.087	0.035	(42.4%)	0	0	0.4%	6.7%
= Alimtiq Investment Group	ALIMK.KW	5.1	0.63	6.18%	0.86	0.124	0.000	140.6	0.147	0.106	(7.5%)	351,837	43,438	61.2%	12.5%
= Tamkeen Holding Co.	TAMKE.KW	NM	0.05	0.00%	NA	0.005	0.000	0.3	0.012	0.002	(47.5%)	0	0	12.2%	NM
▼ Manazel Holding Co.	MANK.KW	NM	0.88	0.00%	1.64	0.037	(0.001)	16.0	0.048	0.020	50.2%	454,445	16,933	34.5%	NM
▼ National Industries Group	NIND.KW	14.7	0.95	4.76%	1.35	0.240	(0.002)	342.7	0.261	0.148	59.5%	2,419,639	581,013	98.6%	6.5%
= Warba Capital Holding Co.	WARBACAP.KW	NM	0.74	0.00%	1.11	0.067	0.000	6.7	0.145	0.060	118.6%	0	0	21.3%	NM
▼ Arabi Holding Group Co.	AGHC.KW	NM	2.00	0.00%	0.23	0.287	(0.002)	49.6	0.337	0.060	315.9%	52,975	14,813	80.9%	0.5%
▼ Privatization Holding Co.	KPPC.KW	NM	0.35	10.00%	1.24	0.050	(0.000)	30.5	0.065	0.048	(4.8%)	8,500	425	27.0%	NM
= Credit Rating & Collection Co.	TAHS.KW	NM	0.63	0.00%	0.04	0.021	0.000	3.4	0.037	0.013	(7.2%)	0	0	0.4%	NM
= Egypt Kuwait Holding Co.	EKHK.KW	16.8	2.83	4.44%	0.27	0.450	0.000	461.0	0.500	0.310	38.5%	0	0	0.2%	16.8%
= GFH Financial Group	GFH.KW	7.5	0.81	6.00%	1.09	0.072	0.000	263.2	0.097	0.063	(6.9%)	124,457	8,825	8.2%	10.7%
▲ Inovent	INOV.KW	8.8	0.43	8.06%	0.92	0.062	0.000	17.8	0.088	0.056	(22.5%)	100	6	9.0%	4.9%
= Al Bareeq Holding	BAREEQ.KW	28.4	1.10	0.00%	0.05	0.100	0.000	43.7	0.110	0.100	0.0%	0	0	0.0%	3.9%
= Amar For Finance and Leasing Co.	AMARF.KW	NM	0.44	0.00%	NA	0.038	0.000	7.6	0.066	0.025	(7.3%)	92,500	3,515	2.0%	NM
▲ Al-Manar Financing & Leasing Co.	ALMANAR.KW	20.4	0.48	0.00%	NA	0.052	0.001	16.2	0.075	0.035	(1.5%)	391,522	19,976	48.5%	2.4%
Financial Services		12.4	0.80	4.22%				2,740.7			30.7%	37,821,688	2,385,894		6.5%

Boursa Kuwait Daily Bulletin

Wednesday, December 11, 2019

Company	Reuters Ticker	Valuation Multiples				Price (KWD)		MKT Cap (KWD Mn.)	52 Weeks High (KWD)	52 Weeks Low (KWD)	YTD-19 Return #	Daily Trading Data		YTD-19 Capital Turnover	ROE
		Trailing P/E (X)	Trailing P/BV (X)	Dividend Yield	Beta	Closing	DTD Change					Volume (Shrs.)	Value (KWD)		
▼ Automated Systems Co.	ASCK.KW	NM	0.51	6.15%	0.04	0.065	(0.005)	6.5	0.120	0.063	(39.8%)	245,000	16,325	1.2%	NM
= Osos Holding Group Co.	OSOS.KW	15.3	0.80	9.71%	0.40	0.103	0.000	10.3	0.118	0.094	1.0%	50,049	5,155	14.1%	5.2%
= Hayat Communications Co.	HAYK.KW	16.1	0.44	0.00%	1.55	0.049	0.000	4.5	0.100	0.025	(28.1%)	0	0	1.7%	2.8%
Technology		35.4	0.59	6.57%				21.3			(21.9%)	295,049	21,480		1.7%

Boursa Kuwait	16.3	1.44	3.45%		35,280.2		21.6%	121,964,128	26,264,020		8.9%
----------------------	-------------	-------------	--------------	--	-----------------	--	--------------	--------------------	-------------------	--	-------------

Year-to-Date 2019 Top Movers & Most Active Stocks

YTD Top % Gainers	Close (KWD)	Percent Change
Arabi Holding Group Co.	0.287	315.9%
Gulf Investment House	0.059	230.3%
Kuwait & M.E. Financial Inv. Co.	0.091	185.3%
Warba Capital Holding Co.	0.067	118.6%
AL-Enma'a Real Estate Co.	0.067	104.9%

YTD Top % Losers	Close (KWD)	Percent Change
Danah Alsafat Foodstuff Co.	0.016	(58.8%)
Al-Mal Investment Co.	0.009	(55.0%)
International Resorts Co.	0.011	(50.9%)
Dar Al Thuraya Real Estate Co.	0.120	(45.5%)
Abyaar Real Estate Development Co.	0.008	(45.4%)

YTD Most Active by Volume	Close (KWD)	Volume (Shrs.)
Ahli United Bank - Bahrain	0.297	2,893,116,792
A'ayan Leasing & Investment Co.	0.045	2,695,842,877
Gulf Bank	0.290	2,353,785,861
Kuwait Finance House	0.793	1,709,870,636
Arzan Financial Group For Fin. & Invest.	0.024	1,484,316,455

YTD Most Active by Value	Close (KWD)	Value (KWD)
Kuwait Finance House	0.793	1,182,549,500
National Bank of Kuwait	1.035	1,035,553,663
Ahli United Bank - Bahrain	0.297	755,357,004
Gulf Bank	0.290	686,442,143
Zain	0.580	487,339,289

* Different Fiscal Year Company