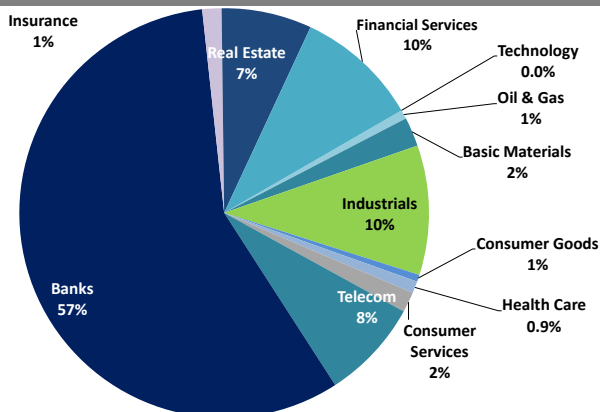


# Boursa Kuwait Daily Report

November 22, 2021

## Sector Weight by Market Cap



## Market Capitalization - Sector Returns

	Market Cap. (KWD Mn)	DTD	DTD % Chg	MTD % Chg	YTD % Chg
Boursa Kuwait	42,745.4	▼	(0.7%)	1.5%	29.5%
Oil & Gas	298.9	▼	(0.8%)	(1.5%)	6.6%
Basic Materials	973.2	▼	(0.1%)	(0.8%)	21.5%
Industrials	4,344.5	▼	(1.1%)	1.2%	36.8%
Consumer Goods	236.9	▼	(0.2%)	(3.1%)	2.1%
Health Care	396.1	▲	0.9%	0.5%	(3.4%)
Consumer Services	680.4	▼	(1.3%)	7.3%	62.3%
Telecommunications	3,358.9	▼	(0.5%)	(0.7%)	(0.6%)
Banks	24,383.7	▼	(0.9%)	1.9%	29.7%
Insurance	642.4	▼	(1.2%)	7.6%	50.1%
Real Estate	3,034.0	▼	(1.1%)	1.5%	47.8%
Financial Services	4,123.2	▲	0.1%	0.8%	52.6%
Technology	10.2	▼	(1.9%)	(3.8%)	47.6%
Utilities	262.9	▲	1.3%	1.3%	-13.7%

## Top 10 Companies by Market Capitalization

Company Name	Market Cap. (Mn KWD)	P/E (X)	ROE* (%)
1- National Bank of Kuwait	7,372.5	24.9	8.9%
2- Kuwait Finance House	7,107.8	36.7	10.3%
3- Ahli United Bank - Bahrain	2,918.7	21.3	10.8%
4- Zain	2,565.9	13.7	16.2%
5- Boubyan Bank	2,543.8	65.7	7.1%
6- Agility (PWC Logistics)	2,265.8	29.6	6.5%
7- Commercial Bank of Kuwait	996.0	55.6	2.3%
8- Mabane Co.	960.5	20.7	9.3%
9- Gulf Bank	792.5	23.6	5.2%
10- Ahli United Bank - Kuwait	774.3	25.7	6.6%
<b>Total</b>	<b>28,298</b>	<b>26.77</b>	<b>9.0%</b>

\*: ROE is calculated based on TTM 1H-2021 net profit & shareholders' equity as of 30-June-21

## Top Movers and Most Active Stocks

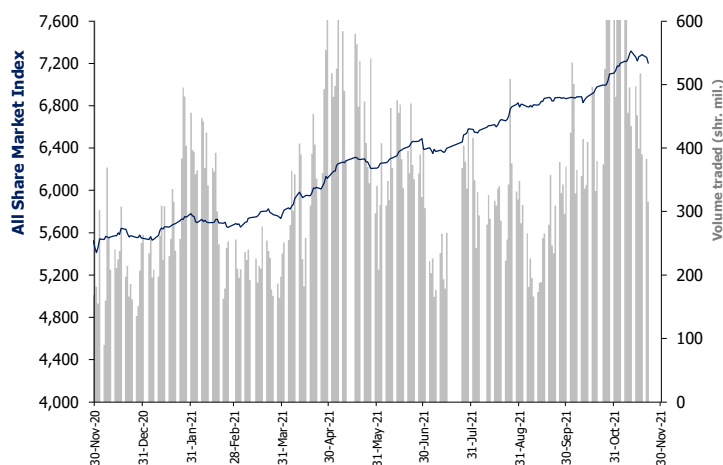
Today's Top % Gainers	Close (KWD)	Change (KWD)	Percent Change
Credit Rating & Collection Co.	0.059	0.005	9.8%
Kuwait Projects Co.(Holding)	0.153	0.010	7.0%
Kuwait Finance & Investment Co.	0.090	0.004	5.0%
MENA Real Estate Co.	0.067	0.003	4.7%
Advanced Technology Co.	0.523	0.023	4.6%

Today's Top % Losers	Close (KWD)	Change (KWD)	Percent Change
Educational Holding Group	0.615	(0.053)	(7.9%)
Equipment Holding Co.	0.067	(0.005)	(7.3%)
Metal & Recycling Co.	0.103	(0.006)	(5.5%)
Palms Agro Production Co.	0.067	(0.004)	(5.5%)
First Takaful Insurance Co.	0.061	(0.003)	(5.0%)

Today's Most Active by Volume	Close (KWD)	Percent Change	Volume (Shares)
GFH Financial Group	0.097	(0.5%)	53,512,704
National Real Estate Co.	0.229	(3.4%)	29,042,864
AAN Digital Services Co.	0.019	1.6%	27,862,090
Kuwait Real Estate Co.	0.183	(2.1%)	12,663,552
MENA Real Estate Co.	0.067	4.7%	11,047,462

Market Breadth	▲ 41	▼ 83	▬ 43		
Benchmark Return	Closing Value	DTD Chg	DTD % Chg	MTD % Chg	YTD % Chg
Premier Market Index	7,799.41	(61.8)	(0.8%)	1.4%	28.9%
Main 50 Index	6,242.05	(35.1)	(0.6%)	1.2%	34.6%
Main Market Index	6,049.04	(32.9)	(0.5%)	1.2%	32.9%
All Share Market Index	7,202.64	(52.6)	(0.7%)	1.3%	29.9%
Market Cap (KWD Mn)	42,745.36	(316.0)	(0.7%)	1.5%	29.5%

## Index Performance relative to Volume



## Market Trading Data and Volatility

Trading Indicators	Today's Value	DTD Chg	DTD % Chg	Average Daily YTD 2021	YTD 2020
Volume (Shrs Mn)	315.5	(67.4)	(17.6%)	353.5	208.3
Value Traded (KWD Mn)	57.9	(3.30)	(5.4%)	55.4	39.6
No. of Trades	12,740	(1,154)	(8.3%)	12,660	9,357

Today's Most Active by Value	Close (KWD)	Percent Change	Value (KWD)
National Real Estate Co.	0.229	(3.4%)	6,805,998
GFH Financial Group	0.097	(0.5%)	5,192,704
Human Soft Holding Co.	3.300	0.0%	4,510,864
Agility (PWC Logistics)	1.016	(1.6%)	3,565,156
National Bank of Kuwait	1.025	(1.3%)	3,260,515

**Boursa Kuwait - Premier Market**

Monday, November 22, 2021

	Premier Market Stocks	Closing Price			Market Capitalization			Valuation Multiples				ROE	YTD-21 Price Return	YTD-21 Trading Indicators	
		KWD	DTD Chg. (KWD)	D-T-D Return	KWD Mn	Weight in Premier Index	Weight in Boursa Kuwait	P/E (X)	P/BV (X)	Yield	Beta			Volume (Mn Shrs)	Value (KWD Mn)
▼	National Bank of Kuwait	1.025	(0.013)	(1.3%)	7,373	23.1%	17.2%	24.9	2.20	1.8%	1.27	8.9%	28.1%	1,092.01	958.46
=	Gulf Bank	0.260	0.000	0.0%	793	2.5%	1.9%	23.6	1.23	1.8%	1.13	5.2%	18.7%	2,306.63	533.74
=	Kuwait International Bank	0.223	0.000	0.0%	253	0.8%	0.6%	NM	0.98	0.0%	1.01	0.8%	7.2%	1,103.03	241.45
▲	Burgan Bank	0.229	0.003	1.3%	717	2.2%	1.7%	20.5	1.06	1.8%	1.05	5.1%	28.2%	548.65	123.18
▼	Kuwait Finance House	0.842	(0.003)	(0.4%)	7,108	22.3%	16.6%	36.7	3.80	1.1%	1.40	10.3%	36.8%	1,369.38	1,044.89
▼	Boubyan Bank	0.800	(0.014)	(1.7%)	2,544	8.0%	6.0%	65.7	4.70	0.0%	1.05	7.1%	47.9%	262.25	175.89
▲	National Investments Co	0.235	0.001	0.4%	206	0.6%	0.5%	8.5	1.09	4.3%	1.25	12.8%	74.1%	448.36	82.04
▲	Kuwait Projects Co. (Holding)	0.153	0.010	7.0%	306	1.0%	0.7%	NM	1.48	3.2%	0.58	0.3%	(3.8%)	369.07	55.88
▼	Al Imtiaz Investment Group	0.124	(0.001)	(0.8%)	141	0.4%	0.3%	NM	0.76	0.0%	0.98	NM	10.7%	1,206.93	149.82
▼	Kuwait Real Estate Co.	0.183	(0.004)	(2.1%)	173	0.5%	0.4%	35.4	1.34	0.0%	0.97	3.8%	76.3%	2,184.29	306.22
▼	Mabane Co.	0.820	(0.012)	(1.4%)	961	3.0%	2.2%	20.7	1.92	0.7%	1.11	9.3%	32.3%	144.85	105.65
▼	National Industries Group (Holding)	0.278	(0.004)	(1.4%)	397	1.2%	0.9%	7.1	1.04	0.0%	1.44	14.5%	58.0%	1,537.18	350.01
▼	Gulf Cable and Electrical Industries	0.970	(0.010)	(1.0%)	204	0.6%	0.5%	36.3	1.09	5.2%	0.94	3.0%	28.5%	62.34	51.18
▼	Boubyan Petrochemical Co.	0.924	(0.001)	(0.1%)	494	1.5%	1.2%	26.3	2.17	5.8%	0.72	8.3%	44.4%	103.51	89.08
▼	Qurain Petrochemicals Industries Co.	0.370	(0.001)	(0.3%)	407	1.3%	1.0%	29.7	0.97	4.1%	0.75	3.3%	9.5%	141.04	54.03
▼	Agility Public Warehousing Co.	1.016	(0.017)	(1.6%)	2,266	7.1%	5.3%	29.6	1.94	0.9%	1.48	6.5%	65.3%	693.28	623.28
▼	Mobile Telecommunications Co.	0.593	(0.004)	(0.7%)	2,566	8.0%	6.0%	13.7	2.22	3.4%	1.35	16.2%	(2.1%)	682.32	414.08
=	Human Soft Holding Co.	3.300	0.000	0.0%	403	1.3%	0.9%	6.0	3.80	12.1%	0.49	63.0%	(13.1%)	53.19	190.38
▼	ALAFCO Aviation Lease and Finance Co.	0.243	(0.002)	(0.8%)	231	0.7%	0.5%	NM	0.78	0.0%	0.87	NM	12.5%	486.19	110.07
▼	Ahli United Bank (B.S.C)	0.288	(0.003)	(1.0%)	2,919	9.2%	6.8%	21.3	2.31	1.3%	1.13	10.8%	32.0%	3,400.56	807.22
▼	Warba Bank	0.308	(0.009)	(2.8%)	485	1.5%	1.1%	18.3	2.45	0.0%	1.00	13.4%	30.5%	666.92	174.22
=	Mezzan Holding Co.	0.610	0.000	0.0%	194	0.6%	0.5%	19.3	1.75	2.8%	0.44	9.1%	2.3%	101.75	62.60
▼	Integrated holding Co.	0.380	(0.005)	(1.3%)	96	0.3%	0.2%	NM	1.59	0.0%	0.47	NM	3.8%	287.57	112.47
▲	Shamal Az-Zour Al-Oula Power and Water	0.239	0.003	1.3%	263	0.8%	0.6%	20.7	5.00	5.0%	0.66	24.2%	(13.7%)	421.30	105.07
▲	Boursa Kuwait Securities Co.	1.938	0.010	0.5%	389	1.2%	0.9%	13.9	7.40	2.1%	0.75	53.2%	76.2%	91.12	125.56
<b>Subtotal- Premier Market Stocks</b>		<b>7,799.41</b>	<b>(61.77)</b>	<b>-0.8%</b>	<b>31,886</b>	<b>100%</b>	<b>75%</b>	<b>24.6</b>	<b>2.24</b>	<b>1.69%</b>		<b>9.1%</b>	<b>28.9%</b>	<b>19,763.71</b>	<b>7,046.48</b>
<b>Remaining of the Market</b>					<b>10,859</b>		<b>25%</b>	<b>55.6</b>	<b>1.16</b>	<b>1.25%</b>		<b>2.1%</b>		<b>56,945.28</b>	<b>4,970.02</b>

**Boursa Kuwait Daily Bulletin**

Monday, November 22, 2021

Company	Reuters Ticker	Valuation Multiples				Price (KWD)		MKT Cap (KWD Mn.)	52 Weeks High (KWD)	52 Weeks Low (KWD)	YTD-21 Return #	Daily Trading Data			YTD-21 Capital Turnover	ROE
		Trailing P/E (X)	Trailing P/BV (X)	Dividend Yield	Beta	Closing	DTD Change					Volume (Shrs.)	Value (KWD)	YTD-21		
▼ Senergy Holding Co.	SENE.KW	NM	1.08	0.00%	1.12	0.053	(0.001)	10.6	0.063	0.021	150.0%	1,226,048	64,084	177.6%	NM	
= Independent Petroleum Group	IPGK.KW	16.0	1.14	4.76%	0.26	0.605	0.000	114.0	0.669	0.447	27.4%	0	0	1.8%	7.2%	
▼ National Petroleum Services Co.	NAPS.KW	14.0	2.16	7.91%	0.20	0.785	(0.010)	78.5	1.150	0.709	(25.2%)	1,000	785	1.4%	15.4%	
▼ The Energy House Co.	ENER.KW	25.0	2.14	0.00%	0.96	0.058	(0.001)	43.5	0.086	0.025	104.2%	263,815	15,060	9.5%	8.6%	
▼ Gulf Petroleum Investment	GPIK.KW	NM	0.39	0.00%	1.08	0.029	(0.000)	13.0	0.031	0.018	48.2%	2,061,969	59,105	389.1%	NM	
▼ Burgan Co. for Drilling, Tdg. & Maint. *	ABAR.KW	15.6	0.59	1.78%	NA	0.162	(0.002)	39.3	0.201	0.123	4.5%	16,994	2,713	149.9%	3.8%	
<b>Oil &amp; Gas</b>		<b>30.2</b>	<b>1.12</b>	<b>4.13%</b>				<b>298.9</b>			<b>6.6%</b>	<b>3,569,826</b>	<b>141,748</b>		<b>3.7%</b>	
▲ Kuwait Foundry Co.	KFDC.KW	NM	1.90	1.87%	0.62	0.374	0.010	27.0	0.430	0.258	39.6%	1	0	13.8%	NM	
▼ Boubyan Petrochemicals Co.*	BPCC.KW	26.3	2.17	5.79%	0.72	0.924	(0.001)	494.2	0.987	0.625	44.4%	391,664	360,405	19.4%	8.3%	
= Al Kout for Industrial Projects Co.	ALKK.KW	NM	1.87	4.45%	0.03	0.449	0.000	45.3	0.675	0.449	(33.5%)	0	0	0.0%	NM	
▼ Qurain Petrochemical Industries Co. *	ALQK.KW	29.7	0.97	4.09%	0.75	0.370	(0.001)	406.7	0.447	0.334	9.5%	281,157	104,145	12.8%	3.3%	
<b>Basic Materials</b>		<b>31.7</b>	<b>1.42</b>	<b>4.91%</b>				<b>973.2</b>			<b>21.5%</b>	<b>672,822</b>	<b>464,550</b>		<b>4.5%</b>	
= Specialities Group Holding Co.	SPEC.KW	56.5	0.79	0.00%	0.44	0.143	0.000	23.6	0.169	0.073	82.6%	1,293,449	186,077	298.4%	1.4%	
= Kuwait Cement Co.	KCEM.KW	NM	0.94	0.00%	0.52	0.245	0.000	179.7	0.266	0.215	6.1%	18,821	4,552	9.2%	NM	
▼ Gulf Cable & Electrical Ind. Co.	CABL.KW	36.3	1.09	5.15%	0.94	0.970	(0.010)	203.6	1.011	0.728	28.5%	127,612	124,072	29.7%	3.0%	
= Heavy Eng'g Ind. & Shipbuilding Co.	SHIP.KW	12.1	1.30	4.26%	0.59	0.470	0.000	84.7	0.524	0.392	18.4%	201,821	94,457	79.4%	10.7%	
▼ Kuwait Portland Cement Co.	PCEM.KW	13.5	1.45	3.97%	0.46	1.008	(0.002)	101.0	1.050	0.766	28.4%	15,001	15,041	15.0%	10.7%	
= Shuaiba Industrial Co.	PAPE.KW	17.7	1.29	4.29%	0.13	0.230	0.000	23.2	0.230	0.145	48.4%	0	0	5.0%	7.3%	
▼ Metal & Recycling Co.	MRCX.KW	NM	1.54	0.00%	0.20	0.103	(0.006)	12.1	0.196	0.051	94.0%	37,001	3,846	14.5%	NM	
▲ ACICO Industries Co.	ACIC.KW	NM	0.57	0.00%	0.38	0.143	0.002	43.1	0.143	0.082	59.1%	5,317,395	757,994	71.9%	NM	
▲ Hilal Cement Co.	HCCX.KW	NM	0.74	0.00%	0.10	0.141	0.001	7.1	0.180	0.069	54.9%	1	0	2.3%	NM	
▼ National Industries Co.	NIBM.KW	23.0	0.83	0.00%	0.17	0.199	(0.007)	74.1	0.218	0.150	27.6%	35,989	7,192	4.4%	3.6%	
▼ Equipment Holding Co.	EQUI.KW	NM	0.99	0.00%	1.02	0.067	(0.005)	5.4	0.079	0.027	127.0%	990,488	68,105	232.2%	NM	
▼ National Co. for Consumer Industries	NCCI.KW	NM	1.67	0.00%	NA	0.133	(0.003)	12.0	0.198	0.038	172.0%	445,247	58,803	690.7%	NM	
▼ Salbookh Trading Co.	SALB.KW	NM	0.98	0.00%	0.59	0.053	(0.002)	5.5	0.072	0.035	39.3%	308,322	16,694	236.9%	NM	
▼ Agility (PWC Logistics)	AGLT.KW	29.6	1.94	0.86%	1.48	1.016	(0.017)	2,265.8	1.090	0.592	65.3%	3,494,448	3,565,156	31.1%	6.5%	
▼ Educational Holding Group*	EDUK.KW	8.0	1.55	0.00%	0.47	0.615	(0.053)	58.6	0.900	0.433	87.5%	953,062	610,257	20.5%	19.5%	
▲ National Cleaning Co.	CLEA.KW	NM	0.47	0.00%	0.79	0.063	0.001	15.7	0.080	0.045	17.8%	55,486	3,496	116.2%	NM	
▼ Kuwait & Gulf Link Transport Co.	KGLK.KW	NM	0.51	0.00%	0.78	0.073	(0.001)	21.2	0.106	0.044	38.3%	1,715,938	125,680	70.0%	NM	
▲ Kuwait Co. For Process Plant Const. & Cont.	KPCX.KW	8.4	2.04	7.78%	0.47	0.534	0.023	61.9	0.629	0.367	39.1%	2,044	1,071	25.5%	24.3%	
= Humansoft Holding Co.	HUMN.KW	6.0	3.80	12.06%	0.49	3.300	0.000	403.4	4.030	3.200	(13.1%)	1,387,217	4,510,864	43.5%	63.0%	
= Gulf Franchising Co.	GFCI.KW	6.1	1.49	0.00%	NA	0.080	0.000	3.2	0.115	0.032	34.0%	10,984	853	4.2%	24.6%	
= National Shooting Co.	SHOOTING.KW	NM	0.71	0.00%	1.20	0.039	0.000	10.9	0.043	0.019	108.6%	0	0	98.6%	NM	
▲ Combined Group Contracting Co.	CGCK.KW	NM	1.57	1.68%	0.65	0.356	0.002	61.1	0.399	0.196	77.1%	130,151	46,119	92.6%	NM	
▲ United Projects Group	UPAC.KW	NM	1.11	0.00%	0.05	0.293	0.003	112.1	0.365	0.186	1.0%	283	82	8.8%	0.9%	
▼ ALAFCO Aviation Lease & Finance Co.*	ALAF.KW	NM	0.78	0.00%	0.87	0.243	(0.002)	231.4	0.256	0.198	12.5%	1,315,469	321,828	51.1%	NM	
= Mubarrad Holding Co.	MBRD.KW	29.2	0.92	0.00%	0.95	0.115	0.000	18.8	0.130	0.063	60.8%	210,980	24,299	251.0%	3.1%	
= KGL Logistics Co.	LOGK.KW	NM	0.25	0.00%	0.77	0.032	0.000	23.4	0.034	0.027	12.8%	0	0	21.7%	NM	
▼ Integrated holding Co.	INTEGRATED.KW	NM	1.59	0.00%	0.47	0.380	(0.005)	96.1	0.399	0.310	3.8%	1,918,873	734,450	113.7%	NM	
= Umm Al-Qaiwain General Investments Co.	QIC.KW	9.9	0.67	5.05%	0.18	0.099	0.000	35.9	0.099	0.063	32.0%	0	0	1.2%	6.8%	
▼ Fujairah Cement Industries Co.	FCEM.KW	NM	0.28	0.00%	0.46	0.056	(0.002)	20.0	0.069	0.028	64.3%	287,070	16,140	20.6%	NM	
▲ Ras-Al-Khaimah for White Cement Co.	RKWC.KW	30.4	1.12	3.60%	0.14	0.139	0.003	69.5	0.175	0.061	113.8%	13,000	1,807	4.8%	3.7%	
▼ Jassim Transport & Stevedoring Co.	JTC.KW	26.3	1.45	4.96%	NA	0.403	(0.005)	60.5	0.450	0.395	0.0%	263,195	106,511	25.9%	5.5%	
<b>Industrials</b>		<b>33.5</b>	<b>1.43</b>	<b>2.31%</b>				<b>4,344.5</b>			<b>36.8%</b>	<b>20,549,347.0</b>	<b>11,405,447</b>		<b>4.3%</b>	

**Boursa Kuwait Daily Bulletin**

Monday, November 22, 2021

Company	Reuters Ticker	Valuation Multiples				Price (KWD)		MKT Cap (KWD Mn.)	52 Weeks High (KWD)	52 Weeks Low (KWD)	YTD-21 Return #	Daily Trading Data		YTD-21	ROE
		Trailing P/E (X)	Trailing P/BV (X)	Dividend Yield	Beta	Closing	DTD Change					Volume (Shrs.)	Value (KWD)	Capital Turnover	
▼ Palms Agro Production Co.	PAPK.KW	NM	0.60	0.00%	0.27	0.067	(0.004)	3.5	0.090	0.050	4.3%	301	19	2.2%	NM
▼ Livestock Transport & Trading Co.	CATT.KW	NM	1.01	0.00%	0.26	0.183	(0.001)	39.6	0.210	0.177	4.0%	12,000	2,196	11.2%	NM
= Mezzan Holding Co.	MEZZ.KW	19.3	1.75	2.84%	0.44	0.610	0.000	193.7	0.679	0.554	2.3%	579,970	353,786	32.0%	9.1%
<b>Consumer Goods</b>		<b>34.9</b>	<b>1.52</b>	<b>2.32%</b>				<b>236.9</b>			<b>2.1%</b>	<b>592,271</b>	<b>356,002</b>		<b>4.4%</b>
▲ Advanced Technology Co.	ATCK.KW	13.6	1.25	2.87%	0.00	0.523	0.023	78.5	0.600	0.401	(8.2%)	10	5	1.0%	9.2%
= Yiacco Medical Co.	YIAC.KW	NM	4.58	0.00%	NA	0.448	0.000	7.7	0.825	0.403	(46.7%)	0	0	1.4%	NM
= Al-Maidan Clinic For Oral Health Services Co.	MIDAN.KW	31.6	19.05	0.81%	NA	1.240	0.000	310.0	1.240	1.200	0.0%	0	0	0.1%	60.3%
<b>Health Care</b>		<b>25.7</b>	<b>4.91</b>	<b>1.20%</b>				<b>396.1</b>			<b>(3.4%)</b>	<b>10</b>	<b>5</b>		<b>19.1%</b>
▼ Kuwait National Cinema Co.	KCIN.KW	NM	1.34	0.00%	0.31	0.890	(0.040)	89.9	0.990	0.700	18.7%	13,001	11,571	1.4%	NM
= Kuwait Hotels Co.	KHOT.KW	10.2	1.21	0.00%	NA	0.090	0.000	5.2	0.113	0.050	51.9%	0	0	20.1%	11.8%
▼ Sultan Center Food Products Co.	SCFK.KW	49.4	1.46	0.00%	0.43	0.235	(0.008)	68.0	0.269	0.097	135.0%	521,805	123,678	66.7%	3.0%
▼ IFA Hotels & Resorts Co.*	IFAH.KW	NM	9.74	0.00%	0.30	0.070	(0.001)	44.5	0.073	0.019	259.0%	2,248,609	159,320	138.1%	NM
= Oula Fuel Marketing Co.	OULA.KW	13.8	0.94	3.04%	0.47	0.162	0.000	65.5	0.178	0.114	31.7%	86,742	13,999	23.8%	6.9%
▼ Kuwait Resorts Co.	MUNK.KW	30.7	0.75	1.92%	0.71	0.104	(0.001)	21.9	0.112	0.060	64.6%	1,325,640	136,956	201.6%	2.4%
▼ Jazeera Airways Co.	JAZK.KW	NM	184.62	0.00%	0.72	1.210	(0.009)	242.0	1.345	0.588	65.8%	298,468	363,856	50.8%	NM
▼ Soor Fuel Marketing Co.	SOOR.KW	18.1	1.00	3.14%	0.47	0.158	(0.002)	63.9	0.175	0.116	29.5%	88,823	14,038	11.6%	5.5%
▲ Future Kid Entertainment and R.E Co.	KIDK.KW	NM	0.84	0.00%	0.03	0.082	0.001	9.6	0.122	0.064	(3.3%)	1,266,290	103,595	184.2%	NM
▲ Jiyad Holding Co	KIYAD.KW	NM	0.82	0.00%	0.65	0.086	0.002	30.2	0.099	0.036	94.8%	97,501	8,403	41.0%	NM
▼ Al Eid Food Co.	ALEID.KW	21.3	2.00	1.52%	NA	0.274	(0.001)	39.6	0.310	0.069	296.1%	316,299	86,726	120.6%	9.4%
<b>Consumer Services</b>		<b>NM</b>	<b>1.92</b>	<b>0.74%</b>				<b>680.4</b>			<b>62.3%</b>	<b>6,263,178</b>	<b>1,022,141</b>		<b>NM</b>
▼ Zain	ZAIN.KW	13.7	2.22	3.37%	1.35	0.593	(0.004)	2,565.9	0.641	0.581	(2.1%)	2,723,784	1,619,747	15.8%	16.2%
= National Mobile Telecom Co.	OORE.KW	38.7	0.63	2.23%	0.47	0.668	0.000	336.7	0.711	0.620	6.5%	971	645	1.8%	1.6%
▲ AAN digital services Co.	AAN.KW	NM	0.71	0.00%	1.32	0.019	0.000	16.7	0.020	0.011	54.0%	27,862,090	530,991	336.3%	NM
= Kuwait Telecommunication Co.	STC.KW	13.1	2.06	6.98%	0.55	0.860	0.000	429.5	0.970	0.822	0.9%	27,073	23,297	5.0%	15.7%
= Hayat Communications Co.	HAYK.KW	NM	0.94	0.00%	1.14	0.109	0.000	10.1	0.124	0.051	94.6%	96,026	10,191	153.7%	NM
<b>Telecommunications</b>		<b>14.7</b>	<b>1.73</b>	<b>3.69%</b>				<b>3,358.9</b>			<b>(0.6%)</b>	<b>30,709,944</b>	<b>2,184,870</b>		<b>11.8%</b>
▼ National Bank of Kuwait	NBKK.KW	24.9	2.20	1.83%	1.27	1.025	(0.013)	7,372.5	1.057	0.792	28.1%	3,164,933	3,260,515	15.2%	8.9%
= Gulf Bank	GBKK.KW	23.6	1.23	1.83%	1.13	0.260	0.000	792.5	0.265	0.205	18.7%	5,536,834	1,437,721	75.7%	5.2%
▼ Commercial Bank of Kuwait	CBKK.KW	55.6	1.30	0.00%	0.38	0.500	(0.005)	996.0	0.605	0.485	0.0%	442	221	3.6%	2.3%
▲ Ahli Bank of Kuwait	ABKK.KW	NM	0.83	0.00%	0.65	0.249	0.001	423.3	0.264	0.186	25.1%	563,311	139,748	12.4%	NM
▼ Ahli United Bank - Kuwait	BKME.KW	25.7	1.69	0.00%	0.85	0.325	(0.001)	774.3	0.332	0.258	23.7%	378,695	122,784	5.3%	6.6%
= Kuwait International Bank	KIBK.KW	NM	0.98	0.00%	1.01	0.223	0.000	252.6	0.233	0.198	7.2%	5,338,074	1,190,392	97.4%	0.8%
▲ Burgan Bank	BURK.KW	20.5	1.06	1.83%	1.05	0.229	0.003	717.1	0.240	0.195	28.2%	2,949,358	669,699	17.5%	5.1%
▼ Kuwait Finance House	KFH.KW	36.7	3.80	1.07%	1.40	0.842	(0.003)	7,107.8	0.849	0.611	36.8%	3,366,815	2,837,809	16.2%	10.3%
▼ Boubyan Bank	BOUK.KW	65.7	4.70	0.00%	1.05	0.800	(0.014)	2,543.8	0.835	0.516	47.9%	1,241,107	1,002,041	8.2%	7.1%
▼ Warba Bank	WARB.KW	18.3	2.45	0.00%	1.00	0.308	(0.009)	485.1	0.323	0.228	30.5%	7,337,385	2,293,079	42.3%	13.4%
▼ Ahli United Bank - Bahrain	AUBK.KW	21.3	2.31	1.26%	1.13	0.288	(0.003)	2,918.7	0.297	0.204	32.0%	3,408,817	986,074	33.6%	10.8%
<b>Banks</b>		<b>32.1</b>	<b>2.32</b>	<b>1.13%</b>				<b>24,383.7</b>			<b>29.7%</b>	<b>33,285,771</b>	<b>13,940,084</b>		<b>7.2%</b>

**Boursa Kuwait Daily Bulletin**

Monday, November 22, 2021

Company	Reuters Ticker	Valuation Multiples				Price (KWD)		MKT Cap (KWD Mn.)	52 Weeks High (KWD)	52 Weeks Low (KWD)	YTD-21 Return #	Daily Trading Data			YTD-21 Capital Turnover	ROE
		Trailing P/E (X)	Trailing P/BV (X)	Dividend Yield	Beta	Closing	DTD Change					Volume (Shrs.)	Value (KWD)	YTD-21		
= Kuwait Insurance Co.	KINS.KW	7.3	0.72	7.33%	0.01	0.390	0.000	75.7	0.459	0.360	1.3%	120,000	46,800	12.4%	9.9%	
▼ Gulf Insurance Group	GINS.KW	17.1	2.42	0.00%	0.07	1.100	(0.020)	313.0	1.200	0.536	36.3%	283,297	303,808	2.2%	14.1%	
▼ Ahleiah Insurance Co.	AINS.KW	8.4	0.90	4.72%	0.13	0.496	(0.006)	109.4	0.561	0.419	10.8%	315,274	156,920	5.7%	10.8%	
▼ Warba Insurance Co.	WINS.KW	10.9	0.71	4.72%	0.37	0.153	(0.004)	28.2	0.176	0.077	89.4%	571,926	86,381	97.6%	6.5%	
= Kuwait Reinsurance Co.	KWRE.KW	13.5	1.26	1.34%	0.14	0.345	0.000	76.0	0.527	0.212	78.3%	0	0	0.1%	9.4%	
▼ First Takaful Insurance Co.	FTIK.KW	NM	0.81	0.00%	0.34	0.061	(0.003)	6.5	0.081	0.034	64.3%	13,801	849	9.0%	NM	
▲ Wethaq Takaful Insurance Co.	WETH.KW	28.3	0.52	0.00%	0.45	0.057	0.000	6.3	0.102	0.020	181.4%	395,683	22,359	327.3%	1.8%	
= Bahrain Kuwait Insurance Co.	BKIK.KW	8.7	0.85	7.85%	0.02	0.191	0.000	27.3	0.000	0.000	(4.5%)	0	0	0.0%	9.7%	
<b>Insurance</b>		<b>12.3</b>	<b>1.26</b>	<b>2.37%</b>				<b>642.4</b>			<b>50.1%</b>	<b>1,699,981</b>	<b>617,117</b>		<b>10.3%</b>	
▲ Sokouk Holding Co.	SHCK.KW	NM	0.82	0.00%	1.15	0.035	0.001	20.5	0.038	0.022	48.1%	2,325,730	78,762	108.7%	NM	
▼ Kuwait Real Estate Co.	KREK.KW	35.4	1.34	0.00%	0.97	0.183	(0.004)	173.4	0.193	0.100	76.3%	12,663,552	2,361,591	230.6%	3.8%	
▲ United Real Estate Co.	UREK.KW	NM	0.54	0.00%	0.41	0.080	0.001	95.0	0.085	0.043	70.2%	261,801	20,902	11.7%	NM	
▼ National Real Estate Co.	NREK.KW	37.8	1.37	0.00%	1.18	0.229	(0.008)	378.1	0.242	0.071	250.8%	29,042,864	6,805,998	137.4%	3.6%	
▼ Salthia Real Estate Co.	SREK.KW	69.1	1.87	5.13%	0.34	0.564	(0.003)	289.2	0.607	0.501	12.1%	75,489	42,229	15.3%	2.7%	
▲ Tamdeen Real Estate Co.	TAMK.KW	NM	0.87	0.00%	0.13	0.341	0.001	147.3	0.374	0.235	26.3%	108,787	36,674	6.2%	NM	
▼ Ajial Real Estate Entertainment Co.	AREC.KW	21.5	0.48	0.00%	0.49	0.316	(0.001)	61.5	0.345	0.170	72.7%	122,230	38,055	15.2%	2.2%	
▲ Al Massaleh Real Estate Co.	MREC.KW	NM	0.65	0.00%	0.28	0.056	0.001	13.2	0.085	0.030	63.5%	74,035	4,008	22.8%	NM	
▼ Arab Real Estate Co.	ARAB.KW	18.7	0.45	0.00%	1.20	0.046	(0.001)	23.5	0.052	0.025	79.0%	2,893,503	132,970	106.4%	2.4%	
▲ AL-Enma'a Real Estate Co.*	ENMA.KW	NM	0.84	0.00%	0.68	0.082	0.000	36.9	0.091	0.047	69.8%	208,348	16,952	113.0%	0.4%	
▼ Mabane Co.	MABK.KW	20.7	1.92	0.69%	1.11	0.820	(0.012)	960.5	0.868	0.611	32.3%	462,601	380,560	12.4%	9.3%	
▲ Injazzat Real Estate Development Co.	INJA.KW	NM	0.70	0.00%	0.20	0.107	0.001	37.0	0.113	0.067	43.6%	253,070	26,620	120.5%	0.6%	
= Investors Holding Group Co.	INVK.KW	NM	0.77	0.00%	1.20	0.016	0.000	9.7	0.020	0.013	(11.4%)	3,825,045	58,821	304.7%	NM	
= The Commercial Real Estate Co.	TIJK.KW	61.3	0.87	2.15%	0.57	0.133	0.000	244.8	0.140	0.091	20.3%	357,601	47,678	48.5%	1.4%	
▼ Sanam Real Estate Co.	SANK.KW	NM	1.15	0.00%	0.39	0.088	(0.002)	10.8	0.094	0.028	155.1%	439,771	38,570	71.8%	NM	
▲ A'ayan Real Estate Co.	AYRE.KW	NM	0.68	0.00%	0.59	0.096	0.000	39.9	0.116	0.057	65.7%	607,264	58,441	134.1%	NM	
▼ Aqar Real Estate Investment Co.	AQAR.KW	NM	0.79	0.00%	NA	0.085	(0.002)	20.8	0.098	0.058	43.2%	468,571	39,872	102.6%	NM	
▼ Kuwait Real Estate Holding Co.	ALAQ.KW	10.4	0.93	0.00%	0.52	0.050	(0.001)	9.6	0.059	0.024	101.2%	166,763	8,702	62.3%	8.9%	
▼ MAZAYA Holding Co.	MAZA.KW	NM	0.83	0.00%	0.99	0.079	(0.001)	54.5	0.122	0.056	38.5%	3,619,192	287,331	401.7%	NM	
▼ Tijara Real Estate & Investment Co.	TIJA.KW	48.3	0.61	0.00%	0.32	0.065	(0.001)	24.0	0.073	0.042	54.3%	1,605,516	105,026	214.0%	1.3%	
▲ Al TAMEER Real Estate Investment Co.	AMAR.KW	24.7	0.75	0.00%	0.97	0.047	0.000	11.4	0.054	0.018	137.0%	1,536,175	73,026	261.8%	3.0%	
= Arkan Al-Kuwait Real Estate Co. *	ARKK.KW	22.1	1.09	2.72%	0.24	0.147	0.000	36.9	0.152	0.086	73.3%	50,010	7,101	15.0%	5.0%	
= Al-Argan International Real Estate Co.	ARGK.KW	NM	0.39	0.00%	0.38	0.115	0.000	30.5	0.124	0.091	4.5%	0	0	1.4%	NM	
▼ Munshaat Real Estate Projects Co.	MUNS.KW	NM	2.51	0.00%	0.63	0.071	(0.001)	22.8	0.121	0.045	0.4%	303,489	20,940	11.5%	NM	
▼ First Dubai For Real Estate Development	FIRST.KW	NM	1.08	0.00%	1.44	0.080	(0.000)	80.0	0.088	0.040	95.1%	2,422,754	195,577	50.2%	1.2%	
▼ Kuwait Business Town Real Estate Co.	KBTk.KW	NM	0.86	0.00%	1.09	0.089	(0.001)	54.1	0.104	0.038	126.1%	201,241	17,901	93.9%	NM	
= Real Estate Asset Management Co.	REAM.KW	NM	0.69	0.00%	0.09	0.090	0.000	9.9	0.000	0.000	0.0%	0	0	0.0%	NM	
▲ MENA Real Estate Co. *	MENK.KW	NM	0.57	0.00%	0.98	0.067	0.003	9.2	0.105	0.027	141.0%	11,047,462	744,831	642.8%	NM	
= Al Mudon International Real Estate Co.	ALMK.KW	NM	0.17	0.00%	0.83	0.021	0.000	2.1	0.027	0.019	14.4%	0	0	110.8%	NM	
▼ Real Estate Trade Centers Co.	MARA.KW	NM	0.56	0.00%	0.39	0.091	(0.001)	13.7	0.123	0.027	229.7%	538,756	46,145	30.1%	NM	
▲ Kuwait Remal Real Estate Co.	REMAK.KW	NM	0.78	0.00%	0.87	0.020	0.001	6.2	0.028	0.016	0.0%	2,322,179	46,902	117.1%	NM	
▲ Mashaer Holding Co.	MASHAER.KW	NM	0.82	0.00%	0.53	0.078	0.001	14.0	0.086	0.056	32.9%	220,417	16,664	50.5%	NM	
= Ajwan Gulf Real Estate Co.	AJWN.KW	NM	0.35	0.00%	0.56	0.011	0.000	2.2	0.000	0.000	0.0%	0	0	0.0%	NM	
▲ Al Masaken Intl. Real Estate Dev. Co.	MASKN.KW	NM	0.83	0.00%	0.16	0.054	0.000	5.4	0.069	0.025	118.2%	365,430	19,174	537.9%	NM	
▲ Dalqan Real Estate Co.	DALQ.KW	NM	1.92	0.00%	NA	0.260	0.003	12.9	0.300	0.198	(5.1%)	12,396	3,125	45.1%	0.6%	
= Dar Al Thuraya Real Estate Co.	THURY.KW	29.8	0.90	0.00%	NA	0.099	0.000	14.5	0.128	0.046	55.8%	0	0	4.0%	3.0%	
= Osos Holding Group Co.	OSOS.KW	14.6	1.10	5.83%	0.29	0.120	0.000	12.6	0.131	0.083	33.3%	207,469	24,533	69.7%	7.5%	
▼ KFH Capital REIT	BAITAKREIT.KW	NA	NA	1.47%	NA	1.260	(0.010)	29.7	1.311	1.018	23.4%	27,000	34,312	13.4%	NA	
▲ Land United Real Estate Co.	LAND.KW	NM	0.90	0.00%	NA	0.107	0.002	16.1	0.200	0.095	(17.1%)	1,853,503	197,325	45.6%	NM	
<b>Real Estate</b>		<b>NM</b>	<b>1.12</b>	<b>0.95%</b>				<b>3,034.0</b>			<b>47.8%</b>	<b>80,690,014</b>	<b>12,037,320</b>		<b>NM</b>	

**Boursa Kuwait Daily Bulletin**

Monday, November 22, 2021

Company	Reuters Ticker	Valuation Multiples				Price (KWD)		MKT Cap (KWD Mn.)	52 Weeks High (KWD)	52 Weeks Low (KWD)	YTD-21 Return #	Daily Trading Data		YTD-21 Capital Turnover	ROE
		Trailing P/E (X)	Trailing P/BV (X)	Dividend Yield	Beta	Closing	DTD Change					Volume (Shrs.)	Value (KWD)		
▼ Kuwait Investment Co.	KINV.KW	6.2	1.33	0.00%	0.75	0.288	(0.005)	158.8	0.317	0.119	136.1%	163,859	47,679	66.2%	21.3%
▲ Commercial Facilities Co.	FACI.KW	5.9	0.74	4.44%	0.53	0.213	0.002	114.3	0.220	0.168	12.1%	167,555	35,468	13.0%	12.6%
▼ Int'l Financial Advisors Co.	IFIN.KW	1.5	1.17	0.00%	1.26	0.122	(0.001)	32.5	0.145	0.059	104.0%	3,692,867	453,303	580.7%	75.6%
▲ National Investment Co.	NINV.KW	8.5	1.09	4.26%	1.25	0.235	0.001	205.9	0.248	0.128	74.1%	319,514	74,785	51.2%	12.8%
▲ Kuwait Projects Co.(Holding)	KPRO.KW	NM	1.48	3.21%	0.58	0.153	0.010	306.0	0.170	0.140	(3.8%)	10,380,559	1,545,040	18.5%	0.3%
▼ Coast Invest. & Development Co.	KOAS.KW	NM	1.17	0.00%	1.30	0.120	(0.003)	55.8	0.127	0.050	147.4%	1,666,952	202,408	153.8%	NM
▼ The Securities House Co.	SECH.KW	NM	1.05	0.00%	1.14	0.106	(0.002)	47.7	0.117	0.052	148.8%	4,602,196	492,426	402.3%	NM
▼ Arzan Financial Group For Fin. & Invest.	ARZA.KW	50.4	1.22	0.00%	1.02	0.164	(0.002)	131.7	0.183	0.055	193.9%	903,797	148,329	314.4%	2.4%
▼ Kuwait Financial Centre	MARKZ.KW	4.7	0.87	0.00%	0.79	0.183	(0.004)	88.0	0.207	0.080	119.4%	2,724,788	504,896	111.1%	18.5%
= Kuwait & M.E. Financial Inv. Co.	KMEF.KW	11.3	1.13	0.00%	0.58	0.128	0.000	28.2	0.198	0.123	4.9%	112,863	14,392	14.3%	10.0%
▼ First Investment Co.	OLAK.KW	NM	0.80	0.00%	1.05	0.083	(0.001)	37.1	0.095	0.039	93.3%	8,565,961	725,212	735.2%	NM
= Al-Mal Investment Co.	MALK.KW	NM	0.25	0.00%	1.14	0.006	0.000	1.8	0.000	0.000	0.0%	0	0	0.0%	NM
▼ Gulf Investment House	GIHK.KW	25.8	4.62	0.00%	1.00	0.306	(0.002)	198.5	0.340	0.076	267.8%	8,982	2,687	76.5%	17.9%
▲ A'ayan Leasing & Investment Co.	AAAY.KW	4.0	1.35	0.00%	1.25	0.159	0.002	113.5	0.204	0.097	73.0%	1,775,432	280,283	340.5%	34.1%
▼ Bayan Investment Co.	BAYK.KW	NM	0.52	0.00%	0.79	0.054	(0.000)	21.0	0.065	0.032	28.5%	394,335	21,302	177.3%	NM
▼ Osoul Investment Co.	OSUL.KW	34.2	0.77	0.00%	0.44	0.089	(0.001)	13.2	0.106	0.061	11.3%	70,100	6,234	36.7%	2.2%
▲ Kuwait Finance & Investment Co.	KFSK.KW	5.8	0.70	0.00%	0.35	0.090	0.004	29.0	0.125	0.042	109.1%	849,894	75,431	58.3%	12.0%
▼ Kamco Investment Co.	KAMC.KW	6.3	0.83	0.00%	0.44	0.139	(0.001)	47.6	0.149	0.072	88.1%	682,160	94,729	78.4%	13.1%
▼ National International Holding Co.	NIHK.KW	NM	1.02	0.00%	0.67	0.162	(0.002)	36.9	0.179	0.069	95.7%	1,103,838	179,955	133.6%	NM
▼ UniCap Investment and Finance	UNICAP.KW	7.8	1.00	0.00%	0.69	0.082	(0.000)	19.7	0.097	0.036	96.2%	73,707	5,835	112.7%	12.8%
▼ Al Madar Finance & Investment Co.	MADR.KW	NM	1.11	0.00%	0.38	0.112	(0.005)	24.0	0.156	0.086	22.9%	488,495	54,295	99.6%	NM
= Al-Deera Holding	DEER.KW	NM	1.41	0.00%	1.01	0.195	0.000	17.9	0.223	0.018	118.8%	0	0	337.9%	0.1%
▲ Al-Safat Investment Co.	ALSAFAT.KW	3.5	1.51	0.00%	NA	0.138	0.005	35.5	0.157	0.120	0.0%	4,126,198	563,145	116.7%	43.3%
= Al Salam Group Holding Co.	SAGH.KW	NM	0.33	0.00%	1.30	0.031	0.000	8.3	0.037	0.024	22.6%	847,038	25,981	332.9%	NM
= Ektitab Holding Co.	EKTT.KW	NM	0.48	0.00%	0.97	0.020	0.000	6.4	0.024	0.015	32.5%	457,450	9,161	204.5%	NM
= Al Madina For Finance & Investment Co.	MADI.KW	1.8	0.43	0.00%	1.18	0.016	0.000	6.6	0.019	0.015	3.2%	0	0	105.7%	23.8%
▼ NOOR Financial Investment Co.	NOOR.KW	8.9	1.80	1.77%	1.21	0.350	(0.002)	139.9	0.399	0.168	105.9%	344,082	120,936	39.0%	20.2%
= Tamdeen Investment Co.	TAMI.KW	NM	0.55	0.00%	0.34	0.384	0.000	132.5	0.414	0.200	23.9%	0	0	3.9%	NM
▼ Kuwait Syrian Holding Co.	KSHC.KW	30.3	1.32	0.00%	0.68	0.053	(0.000)	9.3	0.060	0.025	65.5%	8,258,949	464,796	48.5%	4.3%
▲ Asiya Capital Investment Co.	ASIYA.KW	34.1	0.56	0.00%	0.52	0.050	0.001	40.3	0.057	0.034	37.3%	1,501,569	73,962	62.5%	1.6%
▼ Gulf North Africa Holding Co.	GNAH.KW	71.7	1.16	0.00%	1.03	0.084	(0.001)	12.7	0.087	0.057	29.4%	28,170	2,401	22.4%	1.6%
▼ Alimtiiaz Investment Group	ALIMK.KW	NM	0.76	0.00%	0.98	0.124	(0.001)	140.6	0.142	0.106	10.7%	1,017,552	126,428	106.5%	NM
= Manazel Holding Co.	MANK.KW	30.4	1.16	0.00%	1.36	0.056	0.000	24.1	0.060	0.031	76.7%	4,067,735	227,836	275.5%	3.8%
▼ National Industries Group	NIND.KW	7.1	1.04	0.00%	1.44	0.278	(0.004)	396.9	0.296	0.165	58.0%	2,787,114	779,186	107.7%	14.5%
▼ Warba Capital Holding Co.	WARBACAP.KW	NM	0.68	0.00%	0.68	0.108	(0.001)	5.4	0.145	0.045	122.2%	36,105	3,845	128.3%	NM
▲ Arabi Holding Group Co.	AGHC.KW	45.4	1.04	0.00%	0.15	0.182	0.004	31.5	0.228	0.102	(8.1%)	111,118	19,996	87.7%	2.3%
▼ Privatization Holding Co.	KPPC.KW	20.6	0.46	0.00%	0.79	0.059	(0.000)	36.1	0.070	0.039	47.4%	1,225,803	72,587	229.1%	2.2%
▲ Credit Rating & Collection Co.	TAHS.KW	NM	2.04	0.00%	NA	0.059	0.005	9.8	0.059	0.020	169.5%	4,774,142	273,500	29.3%	NM
▼ Egypt Kuwait Holding Co.	EKHK.KW	13.6	2.80	0.00%	0.18	0.445	(0.003)	501.5	0.465	0.293	37.9%	1,091,650	480,511	5.7%	20.7%
▼ GFH Financial Group	GFH.KW	18.0	1.30	1.88%	0.86	0.097	(0.001)	364.4	0.104	0.047	105.8%	53,512,704	5,192,704	97.9%	7.2%
= Inovest	INOV.KW	NM	0.84	0.00%	0.74	0.118	0.000	35.5	0.134	0.063	79.9%	6,492,127	779,028	299.0%	NM
▼ Al Bareeq Holding	BAREEQ.KW	NM	0.67	0.00%	NA	0.040	(0.000)	30.2	0.102	0.034	(38.9%)	5,611,873	225,301	164.9%	NM
▼ Amar For Finance and Leasing Co.	AMARF.KW	14.7	0.83	0.00%	0.08	0.074	(0.001)	14.8	0.097	0.039	52.4%	274,450	20,072	31.2%	5.6%
▲ Al-Manar Financing & Leasing Co.	ALMANAR.KW	NM	0.75	0.00%	0.53	0.074	0.003	22.8	0.085	0.048	49.2%	373,685	26,770	34.7%	NM
▲ Boursa Kuwait Securities Co	BOURSA.KW	13.9	7.40	2.06%	0.75	1.938	0.010	389.1	2.432	1.091	76.2%	519,241	999,549	45.4%	53.2%
<b>Financial Services</b>		<b>13.4</b>	<b>1.25</b>	<b>1.00%</b>				<b>4,123.2</b>			<b>52.6%</b>	<b>136,206,609</b>	<b>15,452,385</b>		<b>9.3%</b>

**Boursa Kuwait Daily Bulletin**

Monday, November 22, 2021

Company	Reuters Ticker	Valuation Multiples				Price (KWD)			MKT Cap (KWD Mn.)	52 Weeks High (KWD)	52 Weeks Low (KWD)	YTD-21 Return #	Daily Trading Data		YTD-21 Capital Turnover	ROE
		Trailing P/E (X)	Trailing P/BV (X)	Dividend Yield	Beta	Closing	DTD Change	Volume (Shrs.)					Value (KWD)			
▼ Automated Systems Co.	ASCK.KW	NM	0.87	0.00%	0.18	0.102	(0.002)	10.2	0.122	0.068	47.6%	5,010	506	38.4%	NM	
<b>Technology</b>		<b>NM</b>	<b>0.87</b>	<b>0.00%</b>				<b>10.2</b>			<b>47.6%</b>	<b>5,010</b>	<b>506</b>		<b>NM</b>	
▲ Shamal Az-Zour Al-Oula Power and Water Co.	AZNOULA.KW	20.7	5.00	5.02%	0.66	0.239	0.003	262.9	0.276	0.220	(13.7%)	1,267,769	302,150	38.3%	24.2%	
<b>Utilities</b>		<b>20.7</b>	<b>5.00</b>	<b>5.02%</b>				<b>262.9</b>			<b>(13.7%)</b>	<b>1,267,769</b>	<b>302,150</b>		<b>24.2%</b>	
<b>Boursa Kuwait</b>		<b>28.7</b>	<b>1.81</b>	<b>1.58%</b>				<b>42,745.4</b>			<b>29.53%</b>	<b>315,512,552</b>	<b>57,924,325</b>		<b>6.3%</b>	

**Year-to-Date 2021 Top Movers & Most Active Stocks**

YTD Top % Gainers	Close (KWD)	Percent Change
Al Eid Food Co.	0.274	296.1%
Gulf Investment House	0.306	267.8%
IFA Hotels & Resorts Co.	0.070	259.0%
National Real Estate Co.	0.229	250.8%
Real Estate Trade Centers Co.	0.091	229.7%

YTD Most Active by Volume	Close (KWD)	Volume (Shrs.)
GFH Financial Group	0.097	3,696,684,882
Ahli United Bank - Bahrain	0.288	3,400,564,541
First Investment Co.	0.083	3,278,862,325
AAN Digital Services Co.	0.019	2,933,720,581
MAZAYA Holding Co.	0.079	2,765,112,604

YTD Top % Losers	Close (KWD)	Percent Change
Yiaco Medical Co.	0.448	(46.7%)
Al Bareeq Holding	0.040	(38.9%)
Al Kout for Industrial Projects Co.	0.449	(33.5%)
National Petroleum Services Co.	0.785	(25.2%)
Land United Real Estate Co.	0.107	(17.1%)

YTD Most Active by Value	Close (KWD)	Value (KWD)
Kuwait Finance House	0.842	1,044,890,696
National Bank of Kuwait	1.025	958,464,465
Ahli United Bank - Bahrain	0.288	807,223,159
Agility (PWC Logistics)	1.016	623,280,341
Gulf Bank	0.260	533,735,763

\* Different Fiscal Year Company

**Disclaimer & Important Disclosures**

Kamco Invest is authorized and fully regulated by the Capital Markets Authority ("CMA, Kuwait") and partially regulated by the Central Bank of Kuwait ("CBK").

This document is provided for informational purposes only. Nothing contained in this document constitutes investment, an offer to invest, legal, tax or other advice or guidance and should be disregarded when considering or making investment decisions. In preparing this document, Kamco Invest did not take into account the investment objectives, financial situation and particular needs of any particular person. Accordingly, before acting on this document, investors should independently evaluate the investments and strategies referred to herein and make their own determination of whether it is appropriate in light of their own financial circumstances and objectives. The entire content of this document is subject to copyright with all rights reserved. This research and the information contained herein may not be reproduced, distributed or transmitted in Kuwait or in any other jurisdiction to any other person or incorporated in any way into another document or other material without our prior written consent.

**Analyst Certification**  
Each of the analysts identified in this report, if any and where applicable, certifies, with respect to the sector, companies or securities that the individual analyses, that (1) the views expressed in this report reflect his or her personal views about all of the subject companies and securities and (2) no part of his or her compensation was, is or will be directly or indirectly dependent on the specific recommendations or views expressed in this report.

**Kamco Invest Ratings**  
Kamco Invest research is based on the analysis of regional and country economics, industries and company fundamentals. Kamco Invest company research reflects a long-term (12-month) target price for a company or stock. The ratings bands are:  
 \* **Outperform:** Target Price represents expected returns >= 10% in the next 12 months  
 \* **Neutral:** Target Price represents expected returns between -10% and +10% in the next 12 months  
 \* **Underperform:** Target Price represents an expected return of <-10% in the next 12 months  
 In certain circumstances, ratings may differ from those implied by a fair value target using the criteria above. Kamco Invest policy is to maintain up-to-date fair value targets on the companies under its coverage, reflecting any material changes to the analyst's outlook on a company. Share price volatility may cause a stock to move outside the rating range implied by Kamco Invest's fair value target. Analysts may not necessarily change their ratings if this happens, but are expected to disclose the rationale behind their view to Kamco Invest clients.

Any terms and conditions proposed by you which are in addition to or which conflict with this Disclaimer are expressly rejected by Kamco Invest and shall be of no force or effect. The information contained in this document is based on current trade, statistical and other public information we consider reliable. We do not represent or warrant that such information is fair, accurate or complete and it should not be relied upon as such. Kamco Invest has no obligation to update, modify or amend this document or to otherwise notify a recipient thereof in the event that any opinion, forecast or estimate set forth herein, changes or subsequently becomes inaccurate. The publication is provided for informational uses only and is not intended for trading purposes. The information on publications does not give rise to any legally binding obligation and/or agreement, including without limitation any obligation to update such information. You shall be responsible for conducting your own investigation and analysis of the information contained or referred to in this document and of evaluating the merits and risks involved in the securities forming the subject matter of this or other such document. Moreover, the provision of certain data/information in the publication may be subject to the terms and conditions of other agreements to which Kamco Invest is a party.

Nothing in this document should be construed as a solicitation or offer, or recommendation, to acquire or dispose of any investment or to engage in any other transaction, or to provide any investment advice or service. This document is directed at Professional Clients and not Retail Clients within the meaning of CMA rules. Any other persons in receipt of this document must not rely upon or otherwise act upon it. Entities and individuals

**Kamco Investment Company (DIFC) Limited ("Kamco Invest DIFC").** Office 205, Level 2, Gate Village 1, Dubai International Financial Centre, a wholly owned subsidiary of Kamco Investment Company KSC (Public), is regulated by the Dubai Financial Services Authority (DFSA). Kamco Invest DIFC may only undertake the financial services activities that fall within the scope of its existing DFSA licence. The information in this document may be distributed by Kamco Invest DIFC on behalf of Kamco Investment Company KSC (Public). This document is intended for Professional Clients or Market Counterparties only as defined by the DFSA, and no other person should act upon it.

This document may not be distributed in Saudi Arabia except to such persons as are permitted under the Offers of Securities Regulations issued by the Capital Market Authority. The Capital Market Authority does not make any representation as to the accuracy or completeness of this document, and expressly disclaims any liability whatsoever for any loss arising from, or incurred in reliance upon, any part of this document. The recipients of this document hereby should conduct their own due diligence on the accuracy of the information relating to the contents of this document. If you do not understand the contents of this document you should consult an authorized financial advisor.

**Risk Warnings**  
Any prices, valuations or forecasts are indicative and are not intended to predict actual results, which may differ substantially from those reflected. The value of an investment may go up as well as down. The value of and income from any investment may fluctuate from day to day as a result of changes in relevant economic markets (including, without limitation, foreseeable or unforeseeable changes in interest rates, foreign exchange rates, default rates, prepayment rates, political or financial conditions, etc.).

Past performance is not indicative of future results. Any opinions, estimates, valuations or projections (target prices and ratings in particular) are inherently imprecise and a matter of judgment. They are statements of opinion and not of fact, based on current expectations, estimates and projections, and rely on beliefs and assumptions. Actual outcomes and returns may differ materially from what is expressed or forecasted. There are no guarantees of future performance. Certain transactions, including those involving futures, options, and other derivatives, give rise to substantial risk and are not suitable for all investors. This document does not propose to identify or to suggest all of the risks (direct or indirect) which may be associated with the investments and strategies referred to herein.

**Conflict of Interest**  
Kamco Invest and its affiliates provide full investment banking services, and they and their directors, officers and employees, may take positions which conflict with the views expressed in this document. Salespeople, traders, and other professionals of Kamco Invest may provide oral or written market commentary or trading strategies to our clients and our proprietary trading desks that reflect opinions that are contrary to the opinions expressed in this document. Our asset management area, our proprietary trading desks and investing businesses may make investment decisions that are inconsistent with the recommendations or views expressed in this document. Kamco Invest may have or seek investment banking or other business relationships for which it will receive compensation from the companies that are the subject of this document. Facts and views presented in this document have not been reviewed by, and may not reflect information known to, professionals in other Kamco Invest business areas, including investment banking personnel. United Gulf Bank, Bahrain owns majority of Kamco Invest's shareholding and this ownership may create, or may create the appearance of, conflicts of interest.

**No Liability & Warranty**  
Kamco Invest makes neither implied nor expressed representations or warranties and, to the fullest extent permitted by applicable law, we hereby expressly disclaim any and all express, implied and statutory representations and warranties of any kind, including, without limitation, any warranty as to accuracy, timeliness, completeness, and fitness for a particular purpose and/or non-infringement. Kamco Invest will accept no liability in any event including (without limitation) your reliance on the information contained in this document, any negligence for any damages or loss of any kind, including (without limitation) direct, indirect, incidental, special or consequential damages, expenses or losses arising out of, or in connection with your use or inability to use this document, or in connection with any error, omission, defect, computer virus or system failure, or loss of any profit, goodwill or