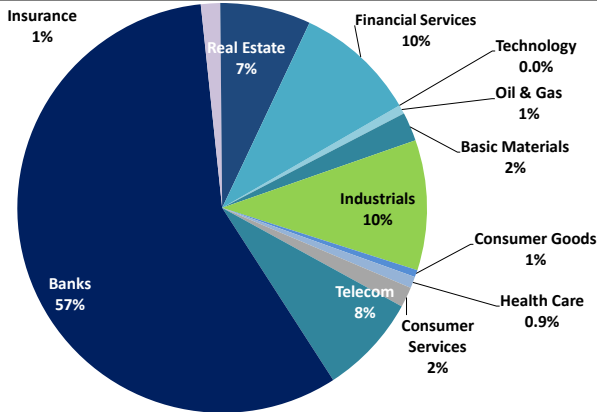


# Boursa Kuwait Daily Report

November 21, 2021

## Sector Weight by Market Cap



## Market Capitalization - Sector Returns

	Market Cap. (KWD Mn)	DTD	DTD % Chg	MTD % Chg	YTD % Chg
<b>Boursa Kuwait</b>	<b>43,061.4</b>	<b>▼</b>	<b>(0.4%)</b>	<b>2.3%</b>	<b>30.5%</b>
Oil & Gas	301.4	▼	(0.5%)	(0.7%)	7.5%
Basic Materials	974.1	▼	(0.5%)	(0.7%)	21.6%
Industrials	4,392.3	▼	(0.7%)	2.4%	38.3%
Consumer Goods	237.3	▼	(0.7%)	(3.0%)	2.2%
Health Care	392.7	=	0.0%	(0.4%)	(4.2%)
Consumer Services	689.3	▲	0.1%	8.7%	64.4%
Telecommunications	3,375.9	▲	0.1%	(0.2%)	(0.1%)
Banks	24,592.9	▼	(0.2%)	2.8%	30.8%
Insurance	650.4	▼	(1.5%)	9.0%	51.9%
Real Estate	3,066.5	▼	(0.9%)	2.6%	49.3%
Financial Services	4,118.5	▼	(1.1%)	0.7%	52.4%
Technology	10.4	▼	(1.9%)	(1.9%)	50.5%
Utilities	259.6	▼	-1.3%	0.0%	-14.8%

## Top 10 Companies by Market Capitalization

Company Name	Market Cap. (Mn KWD)	P/E (X)	ROE* (%)
1- National Bank of Kuwait	7,466.0	25.2	8.9%
2- Kuwait Finance House	7,133.1	36.8	10.3%
3- Ahli United Bank - Bahrain	2,949.1	21.6	10.8%
4- Boubyan Bank	2,588.3	66.8	7.1%
5- Zain	2,583.3	13.8	16.2%
6- Agility (PWC Logistics)	2,303.7	30.1	6.5%
7- Commercial Bank of Kuwait	1,006.0	56.1	2.3%
8- Mabane Co.	974.6	21.0	9.3%
9- Gulf Bank	792.5	23.6	5.2%
10- Ahli United Bank - Kuwait	776.7	25.8	6.6%
<b>Total</b>	<b>28,573</b>	<b>27.03</b>	<b>9.0%</b>

\*: ROE is calculated based on TTM 1H-2021 net profit & shareholders' equity as of 30-June-21

## Top Movers and Most Active Stocks

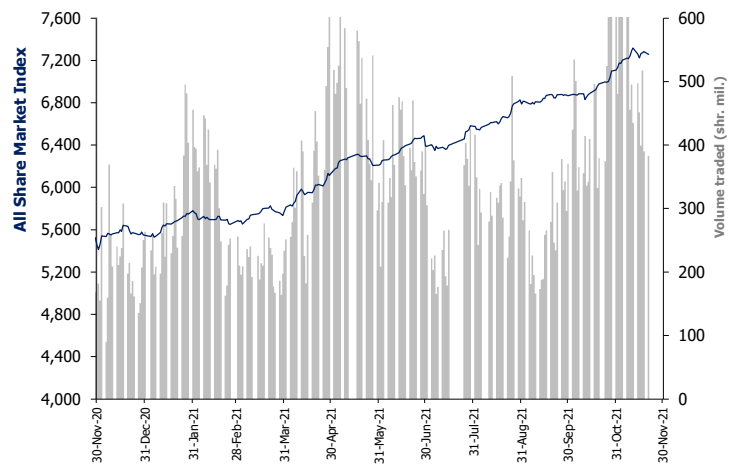
Today's Top % Gainers	Close (KWD)	Change (KWD)	Percent Change
ACICO Industries Co.	0.141	0.005	3.7%
Al-Argan International Real Estate Co.	0.115	0.004	3.6%
Kuwait National Cinema Co.	0.930	0.031	3.4%
Credit Rating & Collection Co.	0.054	0.002	3.4%
Osoul Investment Co.	0.090	0.002	2.6%

Today's Top % Losers	Close (KWD)	Change (KWD)	Percent Change
Real Estate Trade Centers Co.	0.092	(0.023)	(20.0%)
MENA Real Estate Co.	0.064	(0.006)	(8.4%)
Kuwait Finance & Investment Co.	0.086	(0.005)	(5.9%)
Sokouk Holding Co.	0.034	(0.002)	(5.3%)
Al TAMEER Real Estate Investment Co.	0.047	(0.003)	(5.2%)

Today's Most Active by Volume	Close (KWD)	Percent Change	Volume (Shares)
GFH Financial Group	0.097	(4.0%)	77,535,072
National Real Estate Co.	0.237	(1.3%)	41,696,118
First Investment Co.	0.084	1.7%	20,380,355
MENA Real Estate Co.	0.064	(8.4%)	12,585,295
Kuwait Real Estate Co.	0.187	1.6%	12,506,196

Market Breadth	▲ 26	▼ 105	▬ 36		
Benchmark Return	Closing Value	DTD Chg	DTD % Chg	MTD % Chg	YTD % Chg
Premier Market Index	7,861.18	(21.7)	(0.3%)	2.2%	29.9%
Main 50 Index	6,277.10	(51.5)	(0.8%)	1.8%	35.4%
Main Market Index	6,081.96	(44.2)	(0.7%)	1.7%	33.6%
All Share Market Index	7,255.22	(28.2)	(0.4%)	2.1%	30.8%
Market Cap (KWD Mn)	43,061.39	(170.9)	(0.4%)	2.3%	30.5%

## Index Performance relative to Volume



## Market Trading Data and Volatility

Trading Indicators	Today's Value	DTD Chg	DTD % Chg	Average Daily YTD 2021	YTD 2020
Volume (Shrs Mn)	382.9	(7.2)	(1.8%)	353.7	208.5
Value Traded (KWD Mn)	61.2	1.03	1.7%	55.4	39.5
No. of Trades	13,894	110	0.8%	12,660	9,346

Today's Most Active by Value	Close (KWD)	Percent Change	Value (KWD)
National Real Estate Co.	0.237	(1.3%)	9,929,997
GFH Financial Group	0.097	(4.0%)	7,696,355
Warba Bank	0.317	(0.3%)	3,207,228
Agility (PWC Logistics)	1.033	(1.0%)	2,794,348
Kuwait Real Estate Co.	0.187	1.6%	2,333,187

**Boursa Kuwait - Premier Market**

Sunday, November 21, 2021

	Premier Market Stocks	Closing Price			Market Capitalization			Valuation Multiples				ROE	YTD-21 Price Return	YTD-21 Trading Indicators	
		KWD	DTD Chg. (KWD)	D-T-D Return	KWD Mn	Weight in Premier Index	Weight in Boursa Kuwait	P/E (X)	P/BV (X)	Yield	Beta			Volume (Mn Shrs)	Value (KWD Mn)
▲	National Bank of Kuwait	1.038	0.002	0.2%	7,466	23.2%	17.3%	25.2	2.23	1.8%	1.27	8.9%	29.8%	1,088.84	955.20
▼	Gulf Bank	0.260	(0.004)	(1.5%)	793	2.5%	1.8%	23.6	1.23	1.8%	1.13	5.2%	18.7%	2,301.09	532.30
▼	Kuwait International Bank	0.223	(0.002)	(0.9%)	253	0.8%	0.6%	NM	0.98	0.0%	1.01	0.8%	7.2%	1,097.69	240.26
▼	Burgan Bank	0.226	(0.002)	(0.9%)	708	2.2%	1.6%	20.3	1.04	1.9%	1.05	5.1%	26.6%	545.70	122.51
▼	Kuwait Finance House	0.845	(0.001)	(0.1%)	7,133	22.2%	16.6%	36.8	3.81	1.1%	1.40	10.3%	37.3%	1,366.01	1,042.05
▼	Boubyan Bank	0.814	(0.004)	(0.5%)	2,588	8.1%	6.0%	66.8	4.78	0.0%	1.05	7.1%	50.5%	261.01	174.89
▼	National Investments Co	0.234	(0.004)	(1.7%)	205	0.6%	0.5%	8.4	1.08	4.3%	1.25	12.8%	73.3%	448.04	81.96
▲	Kuwait Projects Co. (Holding)	0.143	0.001	0.7%	286	0.9%	0.7%	NM	1.38	3.4%	0.59	0.3%	(10.1%)	358.69	54.34
▼	Al Imtiaz Investment Group	0.125	(0.001)	(0.8%)	142	0.4%	0.3%	NM	0.76	0.0%	0.98	NM	11.6%	1,205.91	149.70
▲	Kuwait Real Estate Co.	0.187	0.003	1.6%	177	0.6%	0.4%	36.2	1.37	0.0%	0.97	3.8%	80.1%	2,171.62	303.86
▼	Mabane Co.	0.832	(0.006)	(0.7%)	975	3.0%	2.3%	21.0	1.95	0.7%	1.11	9.3%	34.2%	144.39	105.27
▼	National Industries Group (Holding)	0.282	(0.002)	(0.7%)	403	1.3%	0.9%	7.2	1.05	0.0%	1.44	14.5%	60.2%	1,534.39	349.23
▼	Gulf Cable and Electrical Industries	0.980	(0.002)	(0.2%)	206	0.6%	0.5%	36.7	1.10	5.1%	0.94	3.0%	29.8%	62.21	51.06
▼	Boubyan Petrochemical Co.	0.925	(0.008)	(0.9%)	495	1.5%	1.1%	26.3	2.17	5.8%	0.72	8.3%	44.5%	103.12	88.72
=	Qurain Petrochemicals Industries Co.	0.371	0.000	0.0%	408	1.3%	0.9%	29.8	0.98	4.1%	0.75	3.3%	9.8%	140.76	53.93
▼	Agility Public Warehousing Co.	1.033	(0.010)	(1.0%)	2,304	7.2%	5.3%	30.1	1.97	0.8%	1.48	6.5%	68.1%	689.79	619.72
▲	Mobile Telecommunications Co.	0.597	0.001	0.2%	2,583	8.0%	6.0%	13.8	2.23	3.4%	1.35	16.2%	(1.5%)	679.60	412.46
▲	Human Soft Holding Co.	3.300	0.020	0.6%	403	1.3%	0.9%	6.0	3.80	12.1%	0.49	63.0%	(13.1%)	51.80	185.87
▼	ALAFCO Aviation Lease and Finance Co.	0.245	(0.002)	(0.8%)	233	0.7%	0.5%	NM	0.78	0.0%	0.87	NM	13.4%	484.88	109.75
▼	Ahli United Bank (B.S.C)	0.291	(0.002)	(0.7%)	2,949	9.2%	6.8%	21.6	2.34	1.3%	1.13	10.8%	33.4%	3,397.16	806.24
▼	Warba Bank	0.317	(0.001)	(0.3%)	499	1.6%	1.2%	18.8	2.52	0.0%	0.99	13.4%	34.3%	659.58	171.93
▼	Mezzan Holding Co.	0.610	(0.005)	(0.8%)	194	0.6%	0.4%	19.3	1.75	2.8%	0.44	9.1%	2.3%	101.17	62.25
▼	Integrated holding Co.	0.385	(0.002)	(0.5%)	97	0.3%	0.2%	NM	1.61	0.0%	0.47	NM	5.2%	285.65	111.74
▼	Shamal Az-Zour Al-Oula Power and Water	0.236	(0.003)	(1.3%)	260	0.8%	0.6%	20.4	4.94	5.1%	0.68	24.2%	(14.8%)	420.03	104.77
▼	Boursa Kuwait Securities Co.	1.928	(0.021)	(1.1%)	387	1.2%	0.9%	13.8	7.36	2.1%	0.76	53.2%	75.3%	90.60	124.56
<b>Subtotal- Premier Market Stocks</b>		<b>7,861.18</b>	<b>(21.68)</b>	<b>-0.3%</b>	<b>32,145</b>	<b>100%</b>	<b>75%</b>	<b>24.8</b>	<b>2.26</b>	<b>1.67%</b>		<b>9.1%</b>	<b>29.9%</b>	<b>19,689.73</b>	<b>7,014.54</b>
<b>Remaining of the Market</b>					<b>10,916</b>		<b>25%</b>	<b>55.9</b>	<b>1.16</b>	<b>1.24%</b>		<b>2.1%</b>		<b>56,703.75</b>	<b>4,944.03</b>

**Boursa Kuwait Daily Bulletin**

Sunday, November 21, 2021

Company	Reuters Ticker	Valuation Multiples				Price (KWD)		MKT Cap (KWD Mn.)	52 Weeks High (KWD)	52 Weeks Low (KWD)	YTD-21 Return #	Daily Trading Data			YTD-21 Capital Turnover	ROE
		Trailing P/E (X)	Trailing P/BV (X)	Dividend Yield	Beta	Closing	DTD Change					Volume (Shrs.)	Value (KWD)	YTD-21		
▼ Senergy Holding Co.	SENE.KW	NM	1.10	0.00%	<b>1.12</b>	<b>0.054</b>	(0.001)	<b>10.8</b>	0.063	0.016	154.2%	557,882	29,496	176.9%	NM	
= Independent Petroleum Group	IPGK.KW	16.0	1.14	4.76%	<b>0.26</b>	<b>0.605</b>	0.000	<b>114.0</b>	0.669	0.445	27.4%	0	0	1.8%	7.2%	
▲ National Petroleum Services Co.	NAPS.KW	14.1	2.18	7.81%	<b>0.20</b>	<b>0.795</b>	0.005	<b>79.5</b>	1.166	0.709	(24.2%)	500	398	1.4%	15.4%	
▼ The Energy House Co.	ENER.KW	25.4	2.17	0.00%	<b>0.96</b>	<b>0.059</b>	(0.001)	<b>44.3</b>	0.086	0.020	107.7%	267,460	15,214	9.5%	8.6%	
▼ Gulf Petroleum Investment	GPIK.KW	NM	0.40	0.00%	<b>1.08</b>	<b>0.029</b>	(0.000)	<b>13.1</b>	0.031	0.018	48.7%	5,984,291	170,894	388.7%	NM	
▼ Burgan Co. for Drilling, Tdg. & Maint. *	ABAR.KW	15.7	0.60	1.76%	<b>NA</b>	<b>0.164</b>	(0.004)	<b>39.8</b>	0.212	0.079	5.8%	163,000	26,810	149.9%	3.8%	
<b>Oil &amp; Gas</b>		<b>30.5</b>	<b>1.13</b>	<b>4.09%</b>				<b>301.4</b>			<b>7.5%</b>	<b>6,973,133</b>	<b>242,811</b>		<b>3.7%</b>	
▼ Kuwait Foundry Co.	KFDC.KW	NM	1.85	1.92%	<b>0.63</b>	<b>0.364</b>	(0.006)	<b>26.3</b>	0.430	0.253	35.8%	3,281	1,207	13.8%	NM	
▼ Boubyan Petrochemicals Co.*	BPCC.KW	26.3	2.17	5.78%	<b>0.72</b>	<b>0.925</b>	(0.008)	<b>494.7</b>	0.987	0.549	44.5%	175,888	162,649	19.3%	8.3%	
= Al Kout for Industrial Projects Co.	ALKK.KW	NM	1.87	4.45%	<b>0.03</b>	<b>0.449</b>	0.000	<b>45.3</b>	0.710	0.449	(33.5%)	0	0	0.0%	NM	
= Qurain Petrochemical Industries Co. *	ALQK.KW	29.8	0.98	4.08%	<b>0.75</b>	<b>0.371</b>	0.000	<b>407.8</b>	0.447	0.293	9.8%	690,069	255,916	12.8%	3.3%	
<b>Basic Materials</b>		<b>31.7</b>	<b>1.43</b>	<b>4.90%</b>				<b>974.1</b>			<b>21.6%</b>	<b>869,238</b>	<b>419,772</b>		<b>4.5%</b>	
▼ Specialities Group Holding Co.	SPEC.KW	56.5	0.79	0.00%	<b>0.44</b>	<b>0.143</b>	(0.002)	<b>23.6</b>	0.169	0.064	82.6%	4,557,264	658,218	297.7%	1.4%	
▲ Kuwait Cement Co.	KCEM.KW	NM	0.94	0.00%	<b>0.52</b>	<b>0.245</b>	0.002	<b>179.7</b>	0.266	0.215	6.1%	44,525	10,778	9.2%	NM	
▼ Gulf Cable & Electrical Ind. Co.	CABL.KW	36.7	1.10	5.10%	<b>0.94</b>	<b>0.980</b>	(0.002)	<b>205.7</b>	1.011	0.700	29.8%	78,950	77,395	29.6%	3.0%	
▼ Heavy Eng'g Ind. & Shipbuilding Co.	SHIP.KW	12.1	1.30	4.26%	<b>0.59</b>	<b>0.470</b>	(0.004)	<b>84.7</b>	0.524	0.379	18.4%	258,230	121,316	79.3%	10.7%	
▼ Kuwait Portland Cement Co.	PCEM.KW	13.5	1.46	3.96%	<b>0.46</b>	<b>1.010</b>	(0.002)	<b>101.2</b>	1.050	0.728	28.7%	46,874	47,097	15.0%	10.7%	
= Shuaiba Industrial Co.	PAPE.KW	17.7	1.29	4.29%	<b>0.13</b>	<b>0.230</b>	0.000	<b>23.2</b>	0.230	0.145	48.4%	10	2	5.0%	7.3%	
▼ Metal & Recycling Co.	MRCK.KW	NM	1.63	0.00%	<b>0.20</b>	<b>0.109</b>	(0.004)	<b>12.8</b>	0.196	0.032	105.3%	15,121	1,657	14.5%	NM	
▲ ACICO Industries Co.	ACIC.KW	NM	0.57	0.00%	<b>0.38</b>	<b>0.141</b>	0.005	<b>42.5</b>	0.143	0.082	56.8%	2,626,589	364,050	70.1%	NM	
= Hilal Cement Co.	HCCK.KW	NM	0.74	0.00%	<b>0.10</b>	<b>0.140</b>	0.000	<b>7.0</b>	0.180	0.132	53.8%	0	0	2.3%	NM	
▲ National Industries Co.	NIBM.KW	23.8	0.86	0.00%	<b>0.17</b>	<b>0.206</b>	0.003	<b>76.7</b>	0.218	0.150	32.1%	1,010	208	4.4%	3.6%	
▼ Equipment Holding Co.	EQUI.KW	NM	1.07	0.00%	<b>1.01</b>	<b>0.073</b>	(0.002)	<b>5.8</b>	0.079	0.024	144.9%	597,090	42,056	230.9%	NM	
▼ National Co. for Consumer Industries	NCCI.KW	NM	1.71	0.00%	<b>NA</b>	<b>0.136</b>	(0.004)	<b>12.2</b>	0.198	0.036	178.1%	876,264	117,300	690.2%	NM	
▲ Salbookh Trading Co.	SALB.KW	NM	1.03	0.00%	<b>0.59</b>	<b>0.055</b>	0.000	<b>5.7</b>	0.072	0.031	45.1%	118,672	6,338	236.6%	NM	
▼ Agility (PWC Logistics)	AGLT.KW	30.1	1.97	0.84%	<b>1.48</b>	<b>1.033</b>	(0.010)	<b>2,303.7</b>	1.090	0.569	68.1%	2,708,305	2,794,348	30.9%	6.5%	
▼ Educational Holding Group*	EDUK.KW	8.7	1.69	0.00%	<b>0.47</b>	<b>0.668</b>	(0.012)	<b>63.7</b>	0.900	0.485	103.7%	14,150	9,533	19.5%	19.5%	
▼ National Cleaning Co.	CLEA.KW	NM	0.46	0.00%	<b>0.80</b>	<b>0.062</b>	(0.002)	<b>15.6</b>	0.080	0.045	16.4%	682,400	42,411	116.2%	NM	
▼ Kuwait & Gulf Link Transport Co.	KGLK.KW	NM	0.52	0.00%	<b>0.78</b>	<b>0.074</b>	(0.004)	<b>21.5</b>	0.106	0.044	40.2%	1,504,142	112,926	69.4%	NM	
▼ Kuwait Co. For Process Plant Const. & Cont.	KPCP.KW	8.0	1.96	8.13%	<b>0.48</b>	<b>0.511</b>	(0.027)	<b>59.2</b>	0.628	0.314	33.1%	33,791	17,285	25.5%	24.3%	
▲ Humansoft Holding Co.	HUMN.KW	6.0	3.80	12.06%	<b>0.49</b>	<b>3.300</b>	0.020	<b>403.4</b>	4.030	3.195	(13.1%)	51,726	170,561	42.4%	63.0%	
▼ Gulf Franchising Co.	GFCI.KW	6.1	1.49	0.00%	<b>NA</b>	<b>0.080</b>	(0.004)	<b>3.2</b>	0.115	0.032	34.0%	110	9	4.2%	24.6%	
= National Shooting Co.	SHOOTING.KW	NM	0.71	0.00%	<b>1.21</b>	<b>0.039</b>	0.000	<b>10.9</b>	0.043	0.018	108.6%	0	0	98.6%	NM	
▼ Combined Group Contracting Co.	CGCK.KW	NM	1.57	1.69%	<b>0.65</b>	<b>0.354</b>	(0.005)	<b>60.7</b>	0.399	0.178	76.1%	576,850	203,830	92.5%	NM	
▼ United Projects Group	UPAC.KW	NM	1.09	0.00%	<b>0.05</b>	<b>0.290</b>	(0.004)	<b>110.9</b>	0.410	0.186	0.0%	25,290	7,220	8.8%	0.9%	
▼ ALAFCO Aviation Lease & Finance Co.*	ALAF.KW	NM	0.78	0.00%	<b>0.87</b>	<b>0.245</b>	(0.002)	<b>233.3</b>	0.256	0.166	13.4%	2,200,036	535,377	50.9%	NM	
▼ Mubarrad Holding Co.	MBRD.KW	29.2	0.92	0.00%	<b>0.95</b>	<b>0.115</b>	(0.004)	<b>18.8</b>	0.130	0.057	60.8%	545,717	63,428	250.9%	3.1%	
= KGL Logistics Co.	LOGK.KW	NM	0.25	0.00%	<b>0.77</b>	<b>0.032</b>	0.000	<b>23.4</b>	0.034	0.027	12.8%	0	0	21.7%	NM	
▼ Integrated holding Co.	INTEGRATED.KW	NM	1.61	0.00%	<b>0.47</b>	<b>0.385</b>	(0.002)	<b>97.4</b>	0.399	0.310	5.2%	3,876,961	1,515,698	112.9%	NM	
= Umm Al-Qaiwain General Investments Co.	QIC.KW	9.9	0.67	5.05%	<b>0.18</b>	<b>0.099</b>	0.000	<b>35.9</b>	0.099	0.063	32.0%	0	0	1.2%	6.8%	
▼ Fujairah Cement Industries Co.	FCEM.KW	NM	0.29	0.00%	<b>0.46</b>	<b>0.058</b>	(0.000)	<b>20.6</b>	0.069	0.028	69.0%	131,373	7,477	20.5%	NM	
= Ras-Al-Khaimah for White Cement Co.	RKWC.KW	29.8	1.09	3.68%	<b>0.14</b>	<b>0.136</b>	0.000	<b>68.0</b>	0.175	0.061	109.2%	0	0	4.8%	3.7%	
▲ Jassim Transport & Stevedoring Co.	JTC.KW	26.6	1.47	4.90%	<b>NA</b>	<b>0.408</b>	0.004	<b>61.2</b>	0.450	0.395	0.0%	253,000	102,379	25.7%	5.5%	
<b>Industrials</b>		<b>33.9</b>	<b>1.44</b>	<b>2.28%</b>				<b>4,392.3</b>			<b>38.3%</b>	<b>21,824,450.0</b>	<b>7,028,898</b>		<b>4.3%</b>	

**Boursa Kuwait Daily Bulletin**

Sunday, November 21, 2021

Company	Reuters Ticker	Valuation Multiples				Price (KWD)		MKT Cap (KWD Mn.)	52 Weeks High (KWD)	52 Weeks Low (KWD)	YTD-21 Return #	Daily Trading Data		YTD-21 Capital Turnover	ROE
		Trailing P/E (X)	Trailing P/BV (X)	Dividend Yield	Beta	Closing	DTD Change					Volume (Shrs.)	Value (KWD)		
= Palms Agro Production Co.	PAPK.KW	NM	0.63	0.00%	0.26	0.071	0.000	3.7	0.090	0.050	10.4%	0	0	2.2%	NM
= Livestock Transport & Trading Co.	CATT.KW	NM	1.02	0.00%	0.26	0.184	0.000	39.9	0.210	0.171	4.5%	22,500	4,152	11.2%	NM
▼ Mezzan Holding Co.	MEZZ.KW	19.3	1.75	2.84%	0.44	0.610	(0.005)	193.7	0.690	0.565	2.3%	501,063	306,444	31.9%	9.1%
<b>Consumer Goods</b>		<b>34.9</b>	<b>1.52</b>	<b>2.32%</b>				<b>237.3</b>			<b>2.2%</b>	<b>523,563</b>	<b>310,596</b>		<b>4.4%</b>
= Advanced Technology Co.	ATCK.KW	13.0	1.20	3.00%	0.01	0.500	0.000	75.0	0.600	0.401	(12.3%)	2,222	1,111	1.0%	9.2%
= Yiac Medical Co.	YIAC.KW	NM	4.58	0.00%	NA	0.448	0.000	7.7	1.000	0.403	(46.7%)	0	0	1.4%	NM
= Al-Maidan Clinic For Oral Health Services Co.	MIDAN.KW	31.6	19.05	0.81%	NA	1.240	0.000	310.0	1.240	1.200	0.0%	0	0	0.1%	60.3%
<b>Health Care</b>		<b>25.5</b>	<b>4.87</b>	<b>1.21%</b>				<b>392.7</b>			<b>(4.2%)</b>	<b>2,222</b>	<b>1,111</b>		<b>19.1%</b>
▲ Kuwait National Cinema Co.	KCIN.KW	NM	1.40	0.00%	0.30	0.930	0.031	94.0	0.990	0.700	24.0%	7,441	6,477	1.4%	NM
= Kuwait Hotels Co.	KHOT.KW	10.2	1.21	0.00%	NA	0.090	0.000	5.2	0.113	0.050	51.9%	0	0	20.1%	11.8%
= Sultan Center Food Products Co.	SCFK.KW	51.1	1.51	0.00%	0.43	0.243	0.000	70.3	0.269	0.090	143.0%	715,943	172,870	66.6%	3.0%
▲ IFA Hotels & Resorts Co.*	IFAH.KW	NM	9.82	0.00%	0.30	0.071	0.000	44.9	0.072	0.018	262.1%	4,331,674	304,738	137.8%	NM
= Oula Fuel Marketing Co.	OULA.KW	13.8	0.94	3.04%	0.47	0.162	0.000	65.5	0.178	0.114	31.7%	308,591	49,899	23.8%	6.9%
▼ Kuwait Resorts Co.	MUNK.KW	31.0	0.76	1.90%	0.70	0.105	(0.001)	22.1	0.112	0.056	66.1%	928,710	97,051	200.9%	2.4%
▼ Jazeera Airways Co.	JAZK.KW	NM	186.00	0.00%	0.72	1.219	(0.004)	243.8	1.345	0.588	67.0%	452,300	551,509	50.6%	NM
= Soor Fuel Marketing Co.	SOOR.KW	18.3	1.01	3.10%	0.47	0.160	0.000	64.8	0.175	0.116	31.1%	253,235	40,186	11.6%	5.5%
▼ Future Kid Entertainment and R.E Co.	KIDK.KW	NM	0.83	0.00%	0.03	0.081	(0.002)	9.4	0.122	0.064	(4.7%)	1,549,052	125,840	183.1%	NM
▼ Jiyad Holding Co	KIYAD.KW	NM	0.81	0.00%	0.65	0.085	(0.003)	29.6	0.099	0.036	90.7%	20,000	1,690	41.0%	NM
▼ Al Eid Food Co.	ALEID.KW	21.4	2.01	1.52%	NA	0.275	(0.002)	39.8	0.310	0.053	297.6%	416,786	114,928	120.4%	9.4%
<b>Consumer Services</b>		<b>NM</b>	<b>1.94</b>	<b>0.73%</b>				<b>689.3</b>			<b>64.4%</b>	<b>8,983,732</b>	<b>1,465,188</b>		<b>NM</b>
▲ Zain	ZAIN.KW	13.8	2.23	3.35%	1.35	0.597	0.001	2,583.3	0.641	0.579	(1.5%)	2,429,261	1,445,469	15.7%	16.2%
▼ National Mobile Telecom Co.	OORE.KW	38.7	0.63	2.23%	0.47	0.668	(0.001)	336.7	0.711	0.610	6.5%	21,258	14,168	1.8%	1.6%
▼ AAN digital services Co.	AAN.KW	NM	0.70	0.00%	1.32	0.019	(0.000)	16.4	0.020	0.011	51.6%	11,525,941	217,535	333.1%	NM
= Kuwait Telecommunication Co.	STC.KW	13.1	2.06	6.98%	0.55	0.860	0.000	429.5	0.970	0.822	0.9%	198,885	171,113	5.0%	15.7%
▼ Hayat Communications Co.	HAYK.KW	NM	0.94	0.00%	1.14	0.109	(0.001)	10.1	0.124	0.045	94.6%	1,160,981	129,029	153.6%	NM
<b>Telecommunications</b>		<b>14.8</b>	<b>1.74</b>	<b>3.67%</b>				<b>3,375.9</b>			<b>(0.1%)</b>	<b>15,336,326</b>	<b>1,977,315</b>		<b>11.8%</b>
▲ National Bank of Kuwait	NBKK.KW	25.2	2.23	1.81%	1.27	1.038	0.002	7,466.0	1.057	0.772	29.8%	2,200,968	2,279,604	15.1%	8.9%
▼ Gulf Bank	GBKK.KW	23.6	1.23	1.83%	1.13	0.260	(0.004)	792.5	0.265	0.205	18.7%	7,273,738	1,898,694	75.5%	5.2%
= Commercial Bank of Kuwait	CBKK.KW	56.1	1.32	0.00%	0.38	0.505	0.000	1,006.0	0.605	0.485	1.0%	0	0	3.6%	2.3%
▲ Ahli Bank of Kuwait	ABKK.KW	NM	0.83	0.00%	0.65	0.248	0.001	421.6	0.264	0.187	24.6%	1,165,058	287,499	12.3%	NM
▼ Ahli United Bank - Kuwait	BKME.KW	25.8	1.69	0.00%	0.85	0.326	(0.001)	776.7	0.332	0.251	24.1%	857,172	279,175	5.3%	6.6%
▼ Kuwait International Bank	KIBK.KW	NM	0.98	0.00%	1.01	0.223	(0.002)	252.6	0.233	0.198	7.2%	4,009,400	895,463	96.9%	0.8%
▼ Burgan Bank	BURK.KW	20.3	1.04	1.85%	1.05	0.226	(0.002)	707.7	0.240	0.183	26.6%	2,428,173	364,695	17.4%	5.1%
▼ Kuwait Finance House	KFH.KW	36.8	3.81	1.07%	1.40	0.845	(0.001)	7,133.1	0.849	0.596	37.3%	2,523,424	2,127,103	16.2%	10.3%
▼ Boubyan Bank	BOUK.KW	66.8	4.78	0.00%	1.05	0.814	(0.004)	2,588.3	0.835	0.516	50.5%	438,360	357,486	8.2%	7.1%
▼ Warba Bank	WARB.KW	18.8	2.52	0.00%	0.99	0.317	(0.001)	499.3	0.320	0.228	34.3%	10,041,652	3,207,228	41.9%	13.4%
▼ Ahli United Bank - Bahrain	AUBK.KW	21.6	2.34	1.25%	1.13	0.291	(0.002)	2,949.1	0.297	0.199	33.4%	5,025,267	1,460,029	33.5%	10.8%
<b>Banks</b>		<b>32.3</b>	<b>2.34</b>	<b>1.12%</b>				<b>24,592.9</b>			<b>30.8%</b>	<b>35,963,212</b>	<b>13,156,976</b>		<b>7.2%</b>

**Boursa Kuwait Daily Bulletin**

Sunday, November 21, 2021

Company	Reuters Ticker	Valuation Multiples				Price (KWD)		MKT Cap (KWD Mn.)	52 Weeks High (KWD)	52 Weeks Low (KWD)	YTD-21 Return #	Daily Trading Data			YTD-21 Capital Turnover	ROE
		Trailing P/E (X)	Trailing P/BV (X)	Dividend Yield	Beta	Closing	DTD Change					Volume (Shrs.)	Value (KWD)	YTD-21		
▼ Kuwait Insurance Co.	KINS.KW	7.3	0.72	7.33%	0.01	0.390	(0.002)	75.7	0.459	0.360	1.3%	140,710	54,907	12.3%	9.9%	
▼ Gulf Insurance Group	GINS.KW	17.5	2.46	0.00%	0.07	1.120	(0.027)	318.7	1.200	0.505	38.8%	30,269	33,339	2.1%	14.1%	
▼ Ahleiah Insurance Co.	AINS.KW	8.5	0.91	4.67%	0.13	0.502	(0.003)	110.7	0.561	0.400	12.1%	39,583	19,857	5.5%	10.8%	
= Warba Insurance Co.	WINS.KW	11.2	0.73	4.60%	0.37	0.157	0.000	28.9	0.176	0.075	94.4%	324,369	49,960	97.3%	6.5%	
▼ Kuwait Reinsurance Co.	KWRE.KW	13.5	1.26	1.34%	0.14	0.345	(0.005)	76.0	0.527	0.194	78.3%	50	17	0.1%	9.4%	
= First Takaful Insurance Co.	FTIK.KW	NM	0.85	0.00%	0.34	0.064	0.000	6.8	0.081	0.029	73.0%	0	0	9.0%	NM	
▼ Wethaq Takaful Insurance Co.	WETH.KW	28.1	0.52	0.00%	0.45	0.057	(0.001)	6.3	0.102	0.019	179.9%	314,880	18,046	326.9%	1.8%	
= Bahrain Kuwait Insurance Co.	BKIK.KW	8.7	0.85	7.85%	0.02	0.191	0.000	27.3	0.191	0.191	(4.5%)	0	0	0.0%	9.7%	
<b>Insurance</b>		<b>12.4</b>	<b>1.28</b>	<b>2.34%</b>				<b>650.4</b>			<b>51.9%</b>	<b>849,861</b>	<b>176,126</b>		<b>10.3%</b>	
▼ Sokouk Holding Co.	SHCK.KW	NM	0.81	0.00%	1.15	0.034	(0.002)	20.2	0.038	0.022	45.9%	4,150,605	141,493	108.3%	NM	
▲ Kuwait Real Estate Co.	KREK.KW	36.2	1.37	0.00%	0.97	0.187	0.003	177.2	0.187	0.097	80.1%	12,506,196	2,333,187	229.2%	3.8%	
▼ United Real Estate Co.	UREK.KW	NM	0.53	0.00%	0.41	0.079	(0.002)	93.8	0.085	0.043	68.1%	547,363	43,268	11.7%	NM	
▼ National Real Estate Co.	NREK.KW	39.1	1.42	0.00%	1.18	0.237	(0.003)	391.3	0.240	0.069	263.0%	41,696,118	9,929,997	135.7%	3.6%	
▼ Salthia Real Estate Co.	SREK.KW	69.5	1.88	5.10%	0.34	0.567	(0.003)	290.7	0.607	0.409	12.7%	478,743	268,493	15.2%	2.7%	
= Tamdeen Real Estate Co.	TAMK.KW	NM	0.86	0.00%	0.13	0.340	0.000	146.9	0.374	0.235	25.9%	1	0	6.2%	NM	
▲ Ajial Real Estate Entertainment Co.	AREC.KW	21.5	0.48	0.00%	0.49	0.317	0.001	61.7	0.345	0.150	73.2%	225,010	71,196	15.2%	2.2%	
= Al Massaleh Real Estate Co.	MREC.KW	NM	0.65	0.00%	0.28	0.055	0.000	13.1	0.085	0.028	62.0%	0	0	22.7%	NM	
▼ Arab Real Estate Co.	ARAB.KW	19.1	0.46	0.00%	1.20	0.047	(0.001)	24.0	0.052	0.024	82.9%	1,185,538	55,458	105.8%	2.4%	
▼ AL-Enma'a Real Estate Co.*	ENMA.KW	NM	0.84	0.00%	0.68	0.082	(0.001)	36.9	0.091	0.045	69.6%	989,427	80,934	113.0%	0.4%	
▼ Mabaneer Co.	MABK.KW	21.0	1.95	0.68%	1.11	0.832	(0.006)	974.6	0.868	0.584	34.2%	260,255	216,420	12.3%	9.3%	
▼ Injazzat Real Estate Development Co.	INJA.KW	NM	0.69	0.00%	0.20	0.106	(0.002)	36.6	0.113	0.067	42.3%	311,000	32,816	120.4%	0.6%	
= Investors Holding Group Co.	INVK.KW	NM	0.77	0.00%	1.20	0.016	0.000	9.7	0.020	0.013	(11.4%)	4,276,775	65,713	304.1%	NM	
▼ The Commercial Real Estate Co.	TIJK.KW	61.3	0.87	2.15%	0.57	0.133	(0.003)	244.8	0.140	0.093	20.3%	1,268,092	170,359	48.5%	1.4%	
▼ Sanam Real Estate Co.	SANK.KW	NM	1.18	0.00%	0.39	0.090	(0.000)	11.0	0.094	0.028	160.6%	398,895	35,306	71.5%	NM	
▼ A'ayan Real Estate Co.	AYRE.KW	NM	0.68	0.00%	0.59	0.096	(0.000)	39.9	0.116	0.054	65.5%	2,842,887	273,619	133.9%	NM	
= Aqar Real Estate Investment Co.	AQAR.KW	NM	0.81	0.00%	NA	0.087	0.000	21.3	0.098	0.057	46.6%	67,072	5,735	102.4%	NM	
▼ Kuwait Real Estate Holding Co.	ALAQ.KW	10.6	0.94	0.00%	0.52	0.051	(0.002)	9.7	0.059	0.023	104.0%	288,185	14,864	62.2%	8.9%	
▼ MAZAYA Holding Co.	MAZA.KW	NM	0.84	0.00%	0.99	0.080	(0.001)	55.0	0.122	0.051	39.7%	5,016,705	400,865	401.2%	NM	
▼ Tijara Real Estate & Investment Co.	TIJA.KW	48.7	0.62	0.00%	0.32	0.065	(0.002)	24.2	0.073	0.039	55.7%	1,675,909	109,971	213.5%	1.3%	
▼ Al TAMEER Real Estate Investment Co.	AMAR.KW	24.5	0.74	0.00%	0.97	0.047	(0.003)	11.3	0.054	0.018	135.0%	3,614,473	172,142	261.2%	3.0%	
▲ Arkan Al-Kuwait Real Estate Co. *	ARKK.KW	22.1	1.09	2.72%	0.24	0.147	0.003	36.9	0.152	0.079	73.3%	83,010	12,028	15.0%	5.0%	
▲ Al-Argan International Real Estate Co.	ARGK.KW	NM	0.39	0.00%	0.38	0.115	0.004	30.5	0.124	0.091	4.5%	2,850	316	1.4%	NM	
▼ Munshaat Real Estate Projects Co.	MUNS.KW	NM	2.52	0.00%	0.63	0.071	(0.001)	22.9	0.121	0.045	1.1%	365,700	25,927	11.4%	NM	
▼ First Dubai For Real Estate Development	FIRST.KW	NM	1.08	0.00%	1.44	0.080	(0.001)	80.2	0.088	0.038	95.6%	1,963,495	156,532	50.0%	1.2%	
▼ Kuwait Business Town Real Estate Co.	KBTk.KW	NM	0.87	0.00%	1.09	0.090	(0.002)	54.7	0.104	0.039	128.9%	572,191	51,601	93.9%	NM	
= Real Estate Asset Management Co.	REAM.KW	NM	0.69	0.00%	0.09	0.090	0.000	9.9	0.108	0.069	0.0%	0	0	0.0%	NM	
▼ MENA Real Estate Co. *	MENK.KW	NM	0.55	0.00%	0.98	0.064	(0.006)	8.8	0.105	0.024	130.2%	12,585,295	844,847	634.7%	NM	
= Al Mudon International Real Estate Co.	ALMK.KW	NM	0.17	0.00%	0.83	0.021	0.000	2.1	0.027	0.017	14.4%	0	0	110.8%	NM	
▼ Real Estate Trade Centers Co.	MARA.KW	NM	0.56	0.00%	0.39	0.092	(0.023)	13.8	0.123	0.027	233.3%	876,873	81,498	29.7%	NM	
▼ Kuwait Remal Real Estate Co.	REMAK.KW	NM	0.76	0.00%	0.88	0.020	(0.000)	6.0	0.028	0.016	(2.5%)	1,322,999	26,197	116.3%	NM	
▼ Mashaer Holding Co.	MASHAER.KW	NM	0.81	0.00%	0.53	0.077	(0.001)	13.8	0.086	0.055	31.2%	232,416	17,769	50.3%	NM	
= Ajwan Gulf Real Estate Co.	AJWN.KW	NM	0.35	0.00%	0.56	0.011	0.000	2.2	0.011	0.010	0.0%	0	0	0.0%	NM	
▼ Al Masaken Intl. Real Estate Dev. Co.	MASKN.KW	NM	0.83	0.00%	0.16	0.054	(0.001)	5.4	0.069	0.022	117.8%	310,651	16,346	537.5%	NM	
▲ Dalqan Real Estate Co.	DALQ.KW	NM	1.90	0.00%	NA	0.257	0.001	12.7	0.303	0.198	(6.2%)	4,500	1,143	45.1%	0.6%	
= Dar Al Thuraya Real Estate Co.	THURY.KW	29.8	0.90	0.00%	NA	0.099	0.000	14.5	0.128	0.046	55.8%	0	0	4.0%	3.0%	
▼ Osos Holding Group Co.	OSOS.KW	14.6	1.10	5.83%	0.29	0.120	(0.002)	12.6	0.131	0.082	33.3%	612,191	74,509	69.5%	7.5%	
▲ KFH Capital REIT	BAITAKREIT.KW	NA	NA	1.46%	NA	1.270	0.020	30.0	0.000	0.000	24.4%	19,732	25,004	13.3%	NA	
▲ Land United Real Estate Co.	LAND.KW	NM	0.89	0.00%	NA	0.105	0.001	15.8	0.200	0.095	(18.6%)	978,219	101,970	44.3%	NM	
<b>Real Estate</b>		<b>NM</b>	<b>1.13</b>	<b>0.94%</b>				<b>3,066.5</b>			<b>49.3%</b>	<b>101,729,371</b>	<b>15,857,525</b>		<b>NM</b>	

**Boursa Kuwait Daily Bulletin**

Sunday, November 21, 2021

Company	Reuters Ticker	Valuation Multiples				Price (KWD)		MKT Cap (KWD Mn.)	52 Weeks High (KWD)	52 Weeks Low (KWD)	YTD-21 Return #	Daily Trading Data		YTD-21	ROE
		Trailing P/E (X)	Trailing P/BV (X)	Dividend Yield	Beta	Closing	DTD Change					Volume (Shrs.)	Value (KWD)	Capital Turnover	
▼ Kuwait Investment Co.	KINV.KW	6.4	1.35	0.00%	0.75	0.293	(0.003)	161.5	0.317	0.115	140.2%	263,403	77,589	66.2%	21.3%
▼ Commercial Facilities Co.	FACI.KW	5.8	0.73	4.49%	0.53	0.211	(0.002)	113.3	0.220	0.161	11.1%	85,400	18,100	13.0%	12.6%
▲ Int'l Financial Advisors Co.	IFIN.KW	1.6	1.18	0.00%	1.26	0.123	0.001	32.8	0.145	0.050	105.7%	7,361,632	907,538	579.3%	75.6%
▼ National Investment Co.	NINV.KW	8.4	1.08	4.28%	1.25	0.234	(0.004)	205.0	0.248	0.124	73.3%	1,512,667	352,474	51.1%	12.8%
▲ Kuwait Projects Co.(Holding)	KPRO.KW	NM	1.38	3.44%	0.59	0.143	0.001	286.0	0.170	0.140	(10.1%)	842,943	119,183	17.9%	0.3%
▼ Coast Invest. & Development Co.	KOAS.KW	NM	1.20	0.00%	1.30	0.123	(0.002)	57.2	0.127	0.046	153.6%	5,990,830	743,382	153.4%	NM
▼ The Securities House Co.	SECH.KW	NM	1.07	0.00%	1.14	0.108	(0.001)	48.6	0.117	0.050	153.5%	4,713,038	507,361	401.3%	NM
▼ Arzan Financial Group For Fin. & Invest.	ARZA.KW	51.0	1.24	0.00%	1.02	0.166	(0.002)	133.3	0.183	0.055	197.5%	1,284,519	213,052	314.3%	2.4%
▼ Kuwait Financial Centre	MARKZ.KW	4.8	0.89	0.00%	0.79	0.187	(0.008)	89.9	0.207	0.079	124.2%	5,250,969	988,568	110.5%	18.5%
▼ Kuwait & M.E. Financial Inv. Co.	KMEF.KW	11.3	1.13	0.00%	0.58	0.128	(0.003)	28.2	0.198	0.123	4.9%	256,750	32,912	14.3%	10.0%
▲ First Investment Co.	OLAK.KW	NM	0.81	0.00%	1.05	0.084	0.001	37.6	0.095	0.042	95.8%	20,380,355	1,712,192	733.3%	NM
= Al-Mal Investment Co.	MALK.KW	NM	0.25	0.00%	1.14	0.006	0.000	1.8	0.007	0.006	0.0%	0	0	0.0%	NM
▼ Gulf Investment House	GIHK.KW	26.0	4.65	0.00%	1.00	0.308	(0.001)	199.8	0.340	0.076	270.2%	232,711	69,077	76.5%	17.9%
▼ A'ayan Leasing & Investment Co.	AAAY.KW	3.9	1.33	0.00%	1.25	0.157	(0.002)	112.1	0.205	0.097	70.8%	3,644,097	571,701	340.3%	34.1%
▼ Bayan Investment Co.	BAYK.KW	NM	0.52	0.00%	0.79	0.054	(0.002)	21.1	0.065	0.032	28.8%	1,051,365	56,675	177.2%	NM
▲ Osoul Investment Co.	OSUL.KW	34.6	0.78	0.00%	0.44	0.090	0.002	13.3	0.108	0.072	12.5%	97,832	8,574	36.7%	2.2%
▼ Kuwait Finance & Investment Co.	KFSK.KW	5.5	0.66	0.00%	0.35	0.086	(0.005)	27.6	0.125	0.040	99.1%	649,062	55,757	58.1%	12.0%
▼ Kamco Investment Co.	KAMC.KW	6.4	0.84	0.00%	0.44	0.140	(0.002)	47.9	0.149	0.072	89.4%	3,841,514	532,090	78.2%	13.1%
▼ National International Holding Co.	NIHK.KW	NM	1.03	0.00%	0.67	0.164	(0.001)	37.3	0.179	0.060	98.1%	3,666,059	606,528	133.1%	NM
▼ UniCap Investment and Finance	UNICAP.KW	7.9	1.01	0.00%	0.69	0.083	(0.000)	19.8	0.097	0.036	96.9%	539,655	43,427	112.7%	12.8%
▲ Al Madar Finance & Investment Co.	MADR.KW	NM	1.16	0.00%	0.37	0.117	0.001	25.0	0.156	0.085	28.4%	50,001	5,800	99.4%	NM
= Al-Deera Holding	DEER.KW	NM	1.41	0.00%	1.01	0.195	0.000	17.9	0.223	0.070	118.8%	0	0	337.9%	0.1%
▼ Al-Safat Investment Co.	ALSAFAT.KW	3.4	1.46	0.00%	NA	0.133	(0.002)	34.2	0.157	0.120	0.0%	2,524,046	338,814	115.1%	43.3%
▼ Al Salam Group Holding Co.	SAGH.KW	NM	0.33	0.00%	1.30	0.031	(0.001)	8.3	0.037	0.024	22.6%	4,902,619	150,990	332.6%	NM
▼ Ektitab Holding Co.	EKTT.KW	NM	0.48	0.00%	0.98	0.020	(0.001)	6.4	0.024	0.015	32.5%	1,649,263	33,414	204.3%	NM
= Al Madina For Finance & Investment Co.	MADI.KW	1.8	0.43	0.00%	1.18	0.016	0.000	6.6	0.019	0.015	3.2%	0	0	105.7%	23.8%
▼ NOOR Financial Investment Co.	NOOR.KW	9.0	1.81	1.76%	1.21	0.352	(0.006)	140.7	0.399	0.164	107.1%	371,084	132,242	39.0%	20.2%
= Tamdeen Investment Co.	TAMI.KW	NM	0.55	0.00%	0.34	0.384	0.000	132.5	0.414	0.200	23.9%	0	0	3.9%	NM
▲ Kuwait Syrian Holding Co.	KSHC.KW	30.4	1.32	0.00%	0.68	0.053	0.001	9.3	0.060	0.025	66.1%	718,918	38,026	43.9%	4.3%
▼ Asiya Capital Investment Co.	ASIYA.KW	33.5	0.55	0.00%	0.53	0.050	(0.002)	39.6	0.057	0.031	34.9%	1,385,990	69,312	62.3%	1.6%
▼ Gulf North Africa Holding Co.	GNAH.KW	72.2	1.17	0.00%	1.03	0.085	(0.001)	12.8	0.087	0.057	30.4%	60,904	5,201	22.4%	1.6%
▼ Alimtiiaz Investment Group	ALIMK.KW	NM	0.76	0.00%	0.98	0.125	(0.001)	141.7	0.142	0.096	11.6%	1,711,846	213,187	106.4%	NM
▼ Manazel Holding Co.	MANK.KW	30.4	1.16	0.00%	1.36	0.056	(0.001)	24.1	0.060	0.030	76.7%	10,108,527	563,855	274.5%	3.8%
▼ National Industries Group	NIND.KW	7.2	1.05	0.00%	1.44	0.282	(0.002)	402.7	0.296	0.165	60.2%	3,639,848	1,025,548	107.5%	14.5%
▼ Warba Capital Holding Co.	WARBACAP.KW	NM	0.69	0.00%	0.68	0.109	(0.003)	5.5	0.145	0.043	124.3%	72,620	7,809	128.2%	NM
▼ Arabi Holding Group Co.	AGHC.KW	44.4	1.02	0.00%	0.15	0.178	(0.005)	30.8	0.228	0.102	(10.1%)	401,149	71,325	87.7%	2.3%
▼ Privatization Holding Co.	KPPC.KW	20.7	0.46	0.00%	0.79	0.060	(0.000)	36.3	0.070	0.039	48.4%	1,240,691	73,035	228.9%	2.2%
▲ Credit Rating & Collection Co.	TAHS.KW	NM	1.86	0.00%	0.00	0.054	0.002	8.9	0.059	0.018	145.5%	4,243,278	232,711	26.4%	NM
▲ Egypt Kuwait Holding Co.	EKHK.KW	13.6	2.82	0.00%	0.18	0.448	0.001	504.8	0.465	0.288	38.8%	612,570	274,124	5.6%	20.7%
▼ GFH Financial Group	GFH.KW	18.1	1.30	1.87%	0.86	0.097	(0.004)	366.3	0.104	0.043	106.8%	77,535,072	7,696,355	96.5%	7.2%
= Inovest	INOV.KW	NM	0.84	0.00%	0.74	0.118	0.000	35.5	0.134	0.055	79.9%	6,348,440	752,015	296.9%	NM
▼ Al Bareeq Holding	BAREEQ.KW	NM	0.67	0.00%	NA	0.040	(0.002)	30.5	0.102	0.016	(38.3%)	8,534,015	347,682	164.1%	NM
▼ Amar For Finance and Leasing Co.	AMARF.KW	14.8	0.84	0.00%	0.08	0.075	(0.000)	15.0	0.097	0.039	53.8%	164,760	12,208	31.0%	5.6%
▼ Al-Manar Financing & Leasing Co.	ALMANAR.KW	NM	0.72	0.00%	0.54	0.071	(0.004)	21.9	0.085	0.042	43.1%	740,458	53,479	34.6%	NM
▼ Boursa Kuwait Securities Co	BOURSA.KW	13.8	7.36	2.07%	0.76	1.928	(0.021)	387.1	2.432	1.081	75.3%	357,935	686,671	45.1%	53.2%
<b>Financial Services</b>		<b>13.4</b>	<b>1.25</b>	<b>1.00%</b>				<b>4,118.5</b>			<b>52.4%</b>	<b>189,038,835</b>	<b>20,399,982</b>		<b>9.3%</b>

## Boursa Kuwait Daily Bulletin

Sunday, November 21, 2021

Company	Reuters Ticker	Valuation Multiples				Price (KWD)			MKT Cap (KWD Mn.)	52 Weeks High (KWD)	52 Weeks Low (KWD)	YTD-21 Return #	Daily Trading Data		YTD-21 Capital Turnover	ROE
		Trailing P/E (X)	Trailing P/BV (X)	Dividend Yield	Beta	Closing	DTD Change	Volume (Shrs.)					Value (KWD)			
Automated Systems Co.	ASCK.KW	NM	0.89	0.00%	0.18	0.104	(0.002)	10.4	0.122	0.067	50.5%	7,610	766	38.4%	NM	
<b>Technology</b>		<b>NM</b>	<b>0.89</b>	<b>0.00%</b>		<b>10.4</b>		<b>50.5%</b>				<b>7,610</b>	<b>766</b>		<b>NM</b>	
Shamal Az-Zour Al-Oula Power and Water Co.	AZNOULA.KW	20.4	4.94	5.08%	0.68	0.236	(0.003)	259.6	0.333	0.220	(14.8%)	769,143	182,508	38.2%	24.2%	
<b>Utilities</b>		<b>20.4</b>	<b>4.94</b>	<b>5.08%</b>		<b>259.6</b>		<b>(14.8%)</b>				<b>769,143</b>	<b>182,508</b>		<b>24.2%</b>	
<b>Boursa Kuwait</b>		<b>28.9</b>	<b>1.82</b>	<b>1.56%</b>				<b>43,061.4</b>			<b>30.49%</b>	<b>382,870,696</b>	<b>61,219,575</b>		<b>6.3%</b>	

### Year-to-Date 2021 Top Movers & Most Active Stocks

YTD Top % Gainers	Close (KWD)	Percent Change
Al Eid Food Co.	0.275	297.6%
Gulf Investment House	0.308	270.2%
National Real Estate Co.	0.237	263.0%
IFA Hotels & Resorts Co.	0.071	262.1%
Real Estate Trade Centers Co.	0.092	233.3%

YTD Most Active by Volume	Close (KWD)	Volume (Shrs.)
GFH Financial Group	0.097	3,643,172,178
Ahli United Bank - Bahrain	0.291	3,397,155,724
First Investment Co.	0.084	3,270,296,364
AAN Digital Services Co.	0.019	2,905,858,491
MAZAYA Holding Co.	0.080	2,761,493,412

YTD Top % Losers	Close (KWD)	Percent Change
Yiaco Medical Co.	0.448	(46.7%)
Al Bareeq Holding	0.040	(38.3%)
Al Kout for Industrial Projects Co.	0.449	(33.5%)
National Petroleum Services Co.	0.795	(24.2%)
Land United Real Estate Co.	0.105	(18.6%)

YTD Most Active by Value	Close (KWD)	Value (KWD)
Kuwait Finance House	0.845	1,042,052,887
National Bank of Kuwait	1.038	955,203,949
Ahli United Bank - Bahrain	0.291	806,237,085
Agility (PWC Logistics)	1.033	619,715,185
Gulf Bank	0.260	532,298,043

\* Different Fiscal Year Company

### Disclaimer & Important Disclosures

Kamco Invest is authorized and fully regulated by the Capital Markets Authority ("CMA, Kuwait") and partially regulated by the Central Bank of Kuwait ("CBK").

This document is provided for informational purposes only. Nothing contained in this document constitutes investment, an offer to invest, legal, tax or other advice or guidance and should be disregarded when considering or making investment decisions. In preparing this document, Kamco Invest did not take into account the investment objectives, financial situation and particular needs of any particular person. Accordingly, before acting on this document, investors should independently evaluate the investments and strategies referred to herein and make their own determination of whether it is appropriate in light of their own financial circumstances and objectives. The entire content of this document is subject to copyright with all rights reserved. This research and the information contained herein may not be reproduced, distributed or transmitted in Kuwait or in any other jurisdiction to any other person or incorporated in any way into another document or other material without our prior written consent.

**Analyst Certification**  
Each of the analysts identified in this report, if any and where applicable, certifies, with respect to the sector, companies or securities that the individual analyses, that (1) the views expressed in this report reflect his or her personal views about all of the subject companies and securities and (2) no part of his or her compensation was, is or will be directly or indirectly dependent on the specific recommendations or views expressed in this report.

**Kamco Invest Ratings**  
Kamco Invest research is based on the analysis of regional and country economics, industries and company fundamentals. Kamco Invest company research reflects a long-term (12-month) target price for a company or stock. The ratings bands are:  
**Outperform:** Target Price represents expected returns >= 10% in the next 12 months  
**Neutral:** Target Price represents expected returns between -10% and +10% in the next 12 months  
**Underperform:** Target Price represents an expected return of <-10% in the next 12 months  
 In certain circumstances, ratings may differ from those implied by a fair value target using the criteria above. Kamco Invest policy is to maintain up-to-date fair value targets on the companies under its coverage, reflecting any material changes to the analyst's outlook on a company. Share price volatility may cause a stock to move outside the rating range implied by Kamco Invest's fair value target. Analysts may not necessarily change their ratings if this happens, but are expected to disclose the rationale behind their view to Kamco Invest clients.

Any terms and conditions proposed by you which are in addition to or which conflict with this Disclaimer are expressly rejected by Kamco Invest and shall be of no force or effect. The information contained in this document is based on current trade, statistical and other public information we consider reliable. We do not represent or warrant that such information is fair, accurate or complete and it should not be relied upon as such. Kamco Invest has no obligation to update, modify or amend this document or to otherwise notify a recipient thereof in the event that any opinion, forecast or estimate set forth herein, changes or subsequently becomes inaccurate. The publication is provided for informational uses only and is not intended for trading purposes. The information on publications does not give rise to any legally binding obligation and/or agreement, including without limitation any obligation to update such information. You shall be responsible for conducting your own investigation and analysis of the information contained or referred to in this document and of evaluating the merits and risks involved in the securities forming the subject matter of this or other such document. Moreover, the provision of certain data/information in the publication may be subject to the terms and conditions of other agreements to which Kamco Invest is a party.

Nothing in this document should be construed as a solicitation or offer, or recommendation, to acquire or dispose of any investment or to engage in any other transaction, or to provide any investment advice or service. This document is directed at Professional Clients and not Retail Clients within the meaning of CMA rules. Any other persons in receipt of this document must not rely upon or otherwise act upon it. Entities and individuals

Kamco Investment Company (DIFC) Limited ("Kamco Invest DIFC"), Office 205, Level 2, Gate Village 1, Dubai International Financial Centre, a wholly owned subsidiary of Kamco Investment Company KSC (Public), is regulated by the Dubai Financial Services Authority (DFSA). Kamco Invest DIFC may only undertake the financial services activities that fall within the scope of its existing DFSA licence. The information in this document may be distributed by Kamco Invest DIFC on behalf of Kamco Investment Company KSC (Public). This document is intended for Professional Clients or Market Counterparties only as defined by the DFSA, and no other person should act upon it.

This document may not be distributed in Saudi Arabia except to such persons as are permitted under the Offers of Securities Regulations issued by the Capital Market Authority. The Capital Market Authority does not make any representation as to the accuracy or completeness of this document, and expressly disclaims any liability whatsoever for any loss arising from, or incurred in reliance upon, any part of this document. The recipients of this document hereby should conduct their own due diligence on the accuracy of the information relating to the contents of this document. If you do not understand the contents of this document you should consult an authorized financial advisor.

**Risk Warnings**  
Any prices, valuations or forecasts are indicative and are not intended to predict actual results, which may differ substantially from those reflected. The value of an investment may go up as well as down. The value of and income from any investment may fluctuate from day to day as a result of changes in relevant economic markets (including, without limitation, foreseeable or unforeseeable changes in interest rates, foreign exchange rates, default rates, prepayment rates, political or financial conditions, etc.).

Past performance is not indicative of future results. Any opinions, estimates, valuations or projections (target prices and ratings in particular) are inherently imprecise and a matter of judgment. They are statements of opinion and not of fact, based on current expectations, estimates and projections, and rely on beliefs and assumptions. Actual outcomes and returns may differ materially from what is expressed or forecasted. There are no guarantees of future performance. Certain transactions, including those involving futures, options, and other derivatives, give rise to substantial risk and are not suitable for all investors. This document does not propose to identify or to suggest all of the risks (direct or indirect) which may be associated with the investments and strategies referred to herein.

**Conflict of Interest**  
Kamco Invest and its affiliates provide full investment banking services, and they and their directors, officers and employees, may take positions which conflict with the views expressed in this document. Salespeople, traders, and other professionals of Kamco Invest may provide oral or written market commentary or trading strategies to our clients and our proprietary trading desks that reflect opinions that are contrary to the opinions expressed in this document. Our asset management area, our proprietary trading desks and investing businesses may make investment decisions that are inconsistent with the recommendations or views expressed in this document. Kamco Invest may have or seek investment banking or other business relationships for which it will receive compensation from the companies that are the subject of this document. Facts and views presented in this document have not been reviewed by, and may not reflect information known to, professionals in other Kamco Invest business areas, including investment banking personnel. United Gulf Bank, Bahrain owns majority of Kamco Invest's shareholding and this ownership may create, or may create the appearance of, conflicts of interest.

**No Liability & Warranty**  
Kamco Invest makes neither implied nor expressed representations or warranties and, to the fullest extent permitted by applicable law, we hereby expressly disclaim any and all express, implied and statutory representations and warranties of any kind, including, without limitation, any warranty as to accuracy, timeliness, completeness, and fitness for a particular purpose and/or non-infringement. Kamco Invest will accept no liability in any event including (without limitation) your reliance on the information contained in this document, any negligence for any damages or loss of any kind, including (without limitation) direct, indirect, incidental, special or consequential damages, expenses or losses arising out of, or in connection with your use or inability to use this document, or in connection with any error, omission, defect, computer virus or system failure, or loss of any profit, goodwill or