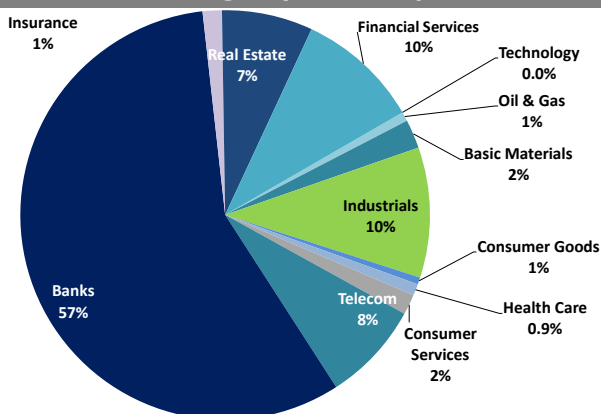


# Boursa Kuwait Daily Report

November 16, 2021

## Sector Weight by Market Cap



## Market Capitalization - Sector Returns

	Market Cap. (KWD Mn)	DTD	DTD % Chg	MTD % Chg	YTD % Chg
<b>Boursa Kuwait</b>	<b>43,122.6</b>	<b>▲</b>	<b>0.6%</b>	<b>2.4%</b>	<b>30.7%</b>
Oil & Gas	308.7	▼	(0.9%)	1.7%	10.1%
Basic Materials	978.1	▲	0.2%	(0.3%)	22.1%
Industrials	4,403.9	▲	0.3%	2.6%	38.7%
Consumer Goods	236.8	▼	(1.6%)	(3.2%)	2.0%
Health Care	392.7	▼	(0.3%)	(0.4%)	(4.2%)
Consumer Services	688.6	▲	0.4%	8.6%	64.2%
Telecommunications	3,371.7	▲	0.0%	(0.3%)	(0.2%)
Banks	24,578.7	▲	0.7%	2.7%	30.7%
Insurance	648.3	▼	(0.0%)	8.6%	51.4%
Real Estate	3,085.6	▲	1.4%	3.2%	50.3%
Financial Services	4,156.3	▲	0.3%	1.7%	53.8%
Technology	10.4	▲	1.0%	(1.9%)	50.5%
Utilities	262.9	▼	-0.4%	1.3%	-13.7%

## Top 10 Companies by Market Capitalization

Company Name	Market Cap. (Mn KWD)	P/E (X)	ROE* (%)
1- National Bank of Kuwait	7,458.8	25.2	8.9%
2- Kuwait Finance House	7,124.7	36.8	10.3%
3- Ahli United Bank - Bahrain	2,939.0	21.5	10.8%
4- Boubyan Bank	2,613.7	67.5	7.1%
5- Zain	2,574.6	13.7	16.2%
6- Agility (PWC Logistics)	2,323.8	30.3	6.5%
7- Commercial Bank of Kuwait	1,000.0	55.8	2.3%
8- Mabane Co.	985.1	21.2	9.3%
9- Gulf Bank	792.5	23.6	5.2%
10- Ahli United Bank - Kuwait	776.7	25.8	6.6%
<b>Total</b>	<b>28,589</b>	<b>27.04</b>	<b>9.0%</b>

\*: ROE is calculated based on TTM 1H-2021 net profit & shareholders' equity as of 30-June-21

## Top Movers and Most Active Stocks

Today's Top % Gainers	Close (KWD)	Change (KWD)	Percent Change
Credit Rating & Collection Co.	0.052	0.010	22.5%
Sanam Real Estate Co.	0.086	0.013	17.1%
GFH Financial Group	0.098	0.006	6.5%
Al Masaken Intl. Real Estate Dev. Co.	0.053	0.003	5.6%
MENA Real Estate Co.	0.089	0.005	5.5%

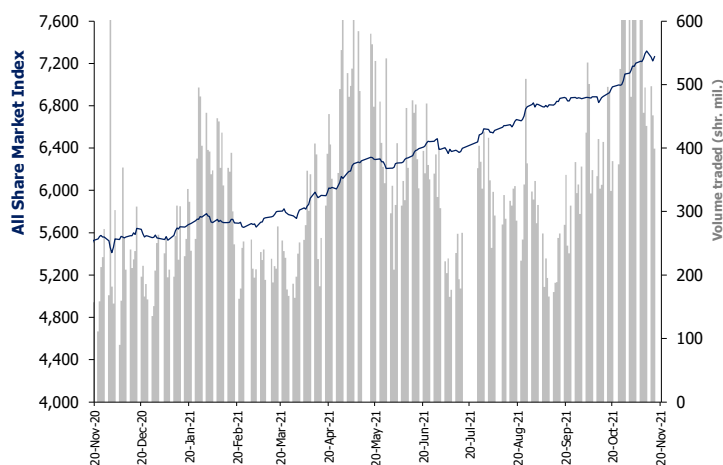
Today's Top % Losers	Close (KWD)	Change (KWD)	Percent Change
Kuwait Syrian Holding Co.	0.049	(0.005)	(8.5%)
The Energy House Co.	0.060	(0.005)	(8.0%)
Amar For Finance And Leasing Co.	0.074	(0.006)	(7.3%)
Arabi Holding Group Co.	0.181	(0.009)	(4.7%)
First Takaful Insurance Co.	0.064	(0.003)	(4.5%)

Today's Most Active by Volume	Close (KWD)	Percent Change	Volume (Shares)
GFH Financial Group	0.098	6.5%	78,678,917
AAN Digital Services Co.	0.019	(0.5%)	39,828,507
Kuwait Remal Real Estate Co.	0.021	(1.4%)	21,332,959
National Real Estate Co.	0.230	2.7%	20,948,368
Gulf Petroleum Investment	0.028	4.4%	10,656,066

Source: Boursa Kuwait, Kamco Invest Research

Market Breadth	▲ 84	▼ 46	▬ 37		
Benchmark Return	Closing Value	DTD Chg	DTD % Chg	MTD % Chg	YTD % Chg
Premier Market Index	7,863.78	45.9	0.6%	2.2%	30.0%
Main 50 Index	6,305.88	57.1	0.9%	2.3%	36.0%
Main Market Index	6,108.96	30.7	0.5%	2.2%	34.2%
All Share Market Index	7,265.07	40.9	0.6%	2.2%	31.0%
Market Cap (KWD Mn)	43,122.63	243.9	0.6%	2.4%	30.7%

## Index Performance relative to Volume



## Market Trading Data and Volatility

Trading Indicators	Today's Value	DTD Chg	DTD % Chg	Average Daily YTD 2021	YTD 2020
Volume (Shrs Mn)	399.2	(52.5)	(11.6%)	352.6	209.5
Value Traded (KWD Mn)	62.3	(17.87)	(22.3%)	55.2	39.5
No. of Trades	14,023	(3,747)	(21.1%)	12,628	9,342

Today's Most Active by Value	Close (KWD)	Percent Change	Value (KWD)
GFH Financial Group	0.098	6.5%	7,436,725
Kuwait Finance House	0.844	0.6%	6,403,061
National Bank of Kuwait	1.037	0.7%	6,194,535
National Real Estate Co.	0.230	2.7%	4,769,168
Agility (PWC Logistics)	1.042	0.7%	3,817,131

**Boursa Kuwait - Premier Market**

Tuesday, November 16, 2021

	Premier Market Stocks	Closing Price			Market Capitalization			Valuation Multiples				ROE	YTD-21 Price Return	YTD-21 Trading Indicators	
		KWD	DTD Chg. (KWD)	D-T-D Return	KWD Mn	Weight in Premier Index	Weight in Boursa Kuwait	P/E (X)	P/BV (X)	Yield	Beta			Volume (Mn Shrs)	Value (KWD Mn)
▲	National Bank of Kuwait	1.037	0.007	0.7%	7,459	23.2%	17.3%	25.2	2.23	1.8%	1.27	8.9%	29.6%	1,075.88	941.76
▲	Gulf Bank	0.260	0.002	0.8%	793	2.5%	1.8%	23.6	1.23	1.8%	1.13	5.2%	18.7%	2,284.79	528.04
=	Kuwait International Bank	0.223	0.000	0.0%	253	0.8%	0.6%	NM	0.98	0.0%	1.01	0.8%	7.2%	1,084.29	237.26
=	Burgan Bank	0.231	0.000	0.0%	723	2.2%	1.7%	20.7	1.07	1.8%	1.05	5.1%	29.4%	539.30	121.49
▲	Kuwait Finance House	0.844	0.005	0.6%	7,125	22.2%	16.5%	36.8	3.81	1.1%	1.40	10.3%	37.1%	1,354.86	1,032.65
▲	Boubyan Bank	0.822	0.006	0.7%	2,614	8.1%	6.1%	67.5	4.82	0.0%	1.05	7.1%	52.0%	258.65	172.95
▼	National Investments Co	0.237	(0.003)	(1.3%)	208	0.6%	0.5%	8.6	1.10	4.2%	1.25	12.8%	75.6%	444.63	81.16
▼	Kuwait Projects Co. (Holding)	0.140	(0.001)	(0.7%)	280	0.9%	0.6%	NM	1.35	3.5%	0.59	0.3%	(11.9%)	356.51	54.03
▲	Al Imtiaz Investment Group	0.126	0.001	0.8%	143	0.4%	0.3%	NM	0.77	0.0%	0.98	NM	12.5%	1,199.40	148.88
▲	Kuwait Real Estate Co.	0.181	0.002	1.1%	171	0.5%	0.4%	35.1	1.33	0.0%	0.97	3.8%	74.4%	2,144.18	298.81
▲	Mabane Co.	0.841	0.009	1.1%	985	3.1%	2.3%	21.2	1.97	0.7%	1.11	9.3%	35.7%	142.31	103.53
▼	National Industries Group (Holding)	0.287	(0.002)	(0.7%)	410	1.3%	1.0%	7.4	1.07	0.0%	1.44	14.5%	63.1%	1,524.37	346.38
▼	Gulf Cable and Electrical Industries	0.961	(0.014)	(1.4%)	202	0.6%	0.5%	36.0	1.08	5.2%	0.94	3.0%	27.3%	61.93	50.79
▲	Boubyan Petrochemical Co.	0.924	0.003	0.3%	494	1.5%	1.1%	26.3	2.17	5.8%	0.72	8.3%	44.4%	102.57	88.21
▲	Qurain Petrochemicals Industries Co.	0.375	0.001	0.3%	412	1.3%	1.0%	30.1	0.99	4.0%	0.75	3.3%	10.9%	138.24	52.99
▲	Agility Public Warehousing Co.	1.042	0.007	0.7%	2,324	7.2%	5.4%	30.3	1.99	0.8%	1.48	6.5%	69.6%	683.12	612.79
▼	Mobile Telecommunications Co.	0.595	(0.001)	(0.2%)	2,575	8.0%	6.0%	13.7	2.23	3.4%	1.35	16.2%	(1.8%)	674.38	409.35
▼	Human Soft Holding Co.	3.206	(0.010)	(0.3%)	392	1.2%	0.9%	5.9	3.69	12.4%	0.49	63.0%	(15.6%)	51.55	185.06
▼	ALAFCO Aviation Lease and Finance Co.	0.248	(0.002)	(0.8%)	236	0.7%	0.5%	NM	0.79	0.0%	0.87	NM	14.8%	478.81	108.26
▲	Ahli United Bank (B.S.C)	0.290	0.004	1.4%	2,939	9.1%	6.8%	21.5	2.33	1.3%	1.13	10.8%	33.0%	3,374.61	799.68
▲	Warba Bank	0.301	0.009	3.1%	474	1.5%	1.1%	17.8	2.39	0.0%	0.99	13.4%	27.5%	629.20	162.34
▼	Mezzan Holding Co.	0.605	(0.012)	(1.9%)	192	0.6%	0.4%	19.1	1.73	2.9%	0.44	9.1%	1.5%	99.66	61.31
▼	Integrated holding Co.	0.376	(0.001)	(0.3%)	95	0.3%	0.2%	NM	1.57	0.0%	0.47	NM	2.7%	275.37	107.79
▼	Shamal Az-Zour Al-Oula Power and Water	0.239	(0.001)	(0.4%)	263	0.8%	0.6%	20.7	5.00	5.0%	0.67	24.2%	(13.7%)	416.84	104.01
▲	Boursa Kuwait Securities Co.	1.985	0.035	1.8%	399	1.2%	0.9%	14.2	7.58	2.0%	0.75	53.2%	80.5%	89.62	122.65
<b>Subtotal- Premier Market Stocks</b>		<b>7,863.78</b>	<b>45.89</b>	<b>0.6%</b>	<b>32,159</b>	<b>100%</b>	<b>75%</b>	<b>24.8</b>	<b>2.26</b>	<b>1.67%</b>		<b>9.1%</b>	<b>30.0%</b>	<b>19,485.06</b>	<b>6,932.15</b>
<b>Remaining of the Market</b>					<b>10,964</b>		<b>25%</b>	<b>56.2</b>	<b>1.17</b>	<b>1.24%</b>		<b>2.1%</b>		<b>55,617.82</b>	<b>4,831.73</b>

**Boursa Kuwait Daily Bulletin**

Tuesday, November 16, 2021

Company	Reuters Ticker	Valuation Multiples				Price (KWD)		MKT Cap (KWD Mn.)	52 Weeks High (KWD)	52 Weeks Low (KWD)	YTD-21 Return #	Daily Trading Data			YTD-21 Capital Turnover	ROE
		Trailing P/E (X)	Trailing P/BV (X)	Dividend Yield	Beta	Closing	DTD Change					Volume (Shrs.)	Value (KWD)	YTD-21		
▲ Senergy Holding Co.	SENE.KW	NM	1.10	0.00%	<b>1.12</b>	<b>0.054</b>	<b>0.001</b>	<b>10.8</b>	0.063	0.021	154.7%	1,171,111	63,081	175.6%	NM	
= Independent Petroleum Group	IPGK.KW	16.0	1.14	4.76%	<b>0.26</b>	<b>0.605</b>	0.000	<b>114.0</b>	0.669	0.447	27.4%	0	0	1.8%	7.2%	
= National Petroleum Services Co.	NAPS.KW	15.0	2.32	7.36%	<b>0.20</b>	<b>0.844</b>	0.000	<b>84.4</b>	1.150	0.709	(19.5%)	0	0	1.4%	15.4%	
▼ The Energy House Co.	ENER.KW	25.7	2.20	0.00%	<b>0.96</b>	<b>0.060</b>	(0.005)	<b>44.9</b>	0.086	0.025	110.6%	1,742,556	107,103	9.2%	8.6%	
▲ Gulf Petroleum Investment	GPIK.KW	NM	0.39	0.00%	<b>1.08</b>	<b>0.028</b>	<b>0.001</b>	<b>12.9</b>	0.031	0.018	47.2%	10,656,066	300,175	384.2%	NM	
▲ Burgan Co. for Drilling, Tdg. & Maint. *	ABAR.KW	16.5	0.63	1.68%	<b>NA</b>	<b>0.172</b>	<b>0.002</b>	<b>41.7</b>	0.207	0.127	11.0%	387,699	65,913	149.5%	3.8%	
<b>Oil &amp; Gas</b>		<b>31.2</b>	<b>1.16</b>	<b>3.99%</b>				<b>308.7</b>			<b>10.1%</b>	<b>13,957,432</b>	<b>536,272</b>		<b>3.7%</b>	
▼ Kuwait Foundry Co.	KFDC.KW	NM	1.86	1.92%	<b>0.63</b>	<b>0.365</b>	(0.005)	<b>26.4</b>	0.430	0.258	36.2%	14,027	5,141	13.7%	NM	
▲ Boubyan Petrochemicals Co.*	BPCC.KW	26.3	2.17	5.79%	<b>0.72</b>	<b>0.924</b>	<b>0.003</b>	<b>494.2</b>	0.987	0.625	44.4%	154,295	142,720	19.2%	8.3%	
= Al Kout for Industrial Projects Co.	ALKK.KW	NM	1.87	4.45%	<b>0.03</b>	<b>0.449</b>	0.000	<b>45.3</b>	0.675	0.449	(33.5%)	0	0	0.0%	NM	
▲ Qurain Petrochemical Industries Co. *	ALQK.KW	30.1	0.99	4.04%	<b>0.75</b>	<b>0.375</b>	<b>0.001</b>	<b>412.2</b>	0.447	0.334	10.9%	747,476	279,039	12.6%	3.3%	
<b>Basic Materials</b>		<b>31.8</b>	<b>1.43</b>	<b>4.88%</b>				<b>978.1</b>			<b>22.1%</b>	<b>915,798</b>	<b>426,900</b>		<b>4.5%</b>	
▼ Specialities Group Holding Co.	SPEC.KW	55.0	0.77	0.00%	<b>0.43</b>	<b>0.139</b>	(0.001)	<b>22.9</b>	0.169	0.073	77.5%	2,309,593	325,940	290.4%	1.4%	
▲ Kuwait Cement Co.	KCEM.KW	NM	0.94	0.00%	<b>0.53</b>	<b>0.246</b>	<b>0.003</b>	<b>180.4</b>	0.266	0.215	6.5%	15,262	3,724	9.2%	NM	
▼ Gulf Cable & Electrical Ind. Co.	CABL.KW	36.0	1.08	5.20%	<b>0.94</b>	<b>0.961</b>	(0.014)	<b>201.7</b>	1.011	0.728	27.3%	31,130	29,996	29.5%	3.0%	
= Heavy Eng'g Ind. & Shipbuilding Co.	SHIP.KW	12.1	1.30	4.24%	<b>0.59</b>	<b>0.472</b>	0.000	<b>85.1</b>	0.524	0.392	18.9%	9,861	4,654	79.1%	10.7%	
▼ Kuwait Portland Cement Co.	PCEM.KW	13.7	1.47	3.93%	<b>0.46</b>	<b>1.019</b>	(0.001)	<b>102.1</b>	1.050	0.766	29.8%	18	18	15.0%	10.7%	
= Shuaiba Industrial Co.	PAPE.KW	16.5	1.20	4.58%	<b>0.13</b>	<b>0.215</b>	0.000	<b>21.6</b>	0.223	0.145	38.7%	0	0	4.9%	7.3%	
▲ Metal & Recycling Co.	MRCK.KW	NM	1.64	0.00%	<b>0.19</b>	<b>0.110</b>	<b>0.004</b>	<b>12.9</b>	0.196	0.051	107.2%	700	76	14.5%	NM	
▲ ACICO Industries Co.	ACIC.KW	NM	0.53	0.00%	<b>0.38</b>	<b>0.133</b>	<b>0.003</b>	<b>40.1</b>	0.143	0.082	47.9%	2,859,510	377,779	68.4%	NM	
= Hilal Cement Co.	HCCK.KW	NM	0.74	0.00%	<b>0.10</b>	<b>0.140</b>	0.000	<b>7.0</b>	0.180	0.069	53.8%	0	0	2.3%	NM	
▼ National Industries Co.	NIBM.KW	22.4	0.81	0.00%	<b>0.17</b>	<b>0.194</b>	(0.006)	<b>72.3</b>	0.218	0.150	24.4%	87,988	17,308	4.4%	3.6%	
▲ Equipment Holding Co.	EQUI.KW	NM	1.06	0.00%	<b>1.01</b>	<b>0.072</b>	<b>0.000</b>	<b>5.8</b>	0.079	0.027	144.3%	976,695	68,982	225.4%	NM	
▼ National Co. for Consumer Industries	NCCI.KW	NM	1.78	0.00%	<b>NA</b>	<b>0.142</b>	(0.001)	<b>12.8</b>	0.198	0.038	190.4%	1,121,825	158,457	682.0%	NM	
▲ Salbookh Trading Co.	SALB.KW	NM	1.01	0.00%	<b>0.59</b>	<b>0.054</b>	<b>0.001</b>	<b>5.7</b>	0.072	0.035	43.2%	301,125	16,103	233.1%	NM	
▲ Agility (PWC Logistics)	AGLT.KW	30.3	1.99	0.84%	<b>1.48</b>	<b>1.042</b>	<b>0.007</b>	<b>2,323.8</b>	1.090	0.592	69.6%	3,668,787	3,817,131	30.6%	6.5%	
▲ Educational Holding Group*	EDUK.KW	9.1	1.77	0.00%	<b>0.47</b>	<b>0.702</b>	<b>0.009</b>	<b>66.9</b>	0.900	0.433	114.0%	147	100	19.3%	19.5%	
▼ National Cleaning Co.	CLEA.KW	NM	0.48	0.00%	<b>0.79</b>	<b>0.064</b>	(0.001)	<b>16.0</b>	0.080	0.045	19.6%	2,150,285	136,777	115.5%	NM	
▲ Kuwait & Gulf Link Transport Co.	KGLK.KW	NM	0.56	0.00%	<b>0.78</b>	<b>0.080</b>	<b>0.001</b>	<b>23.4</b>	0.106	0.044	52.3%	1,954,378	154,832	68.2%	NM	
= Kuwait Co. For Process Plant Const. & Cont.	KPCP.KW	8.5	2.06	7.72%	<b>0.48</b>	<b>0.538</b>	0.000	<b>62.3</b>	0.629	0.367	40.2%	106,427	55,915	25.4%	24.3%	
▼ Humansoft Holding Co.	HUMN.KW	5.9	3.69	12.42%	<b>0.49</b>	<b>3.206</b>	(0.010)	<b>391.9</b>	4.030	3.200	(15.6%)	411,149	1,319,372	42.2%	63.0%	
▼ Gulf Franchising Co.	GFCI.KW	6.7	1.65	0.00%	<b>NA</b>	<b>0.089</b>	(0.000)	<b>3.6</b>	0.115	0.032	48.2%	400	34	4.2%	24.6%	
= National Shooting Co.	SHOOTING.KW	NM	0.71	0.00%	<b>1.21</b>	<b>0.039</b>	0.000	<b>10.9</b>	0.043	0.019	108.6%	0	0	98.6%	NM	
▲ Combined Group Contracting Co.	CGCK.KW	NM	1.60	1.66%	<b>0.65</b>	<b>0.361</b>	<b>0.001</b>	<b>61.9</b>	0.399	0.196	79.6%	315,243	113,365	91.9%	NM	
= United Projects Group	UPAC.KW	NM	1.12	0.00%	<b>0.05</b>	<b>0.298</b>	0.000	<b>114.0</b>	0.365	0.186	2.8%	16,510	4,905	8.8%	0.9%	
▼ ALAFCO Aviation Lease & Finance Co.*	ALAF.KW	NM	0.79	0.00%	<b>0.87</b>	<b>0.248</b>	(0.002)	<b>236.1</b>	0.256	0.198	14.8%	2,194,945	545,069	50.3%	NM	
▲ Mubarrad Holding Co.	MBRD.KW	30.0	0.94	0.00%	<b>0.95</b>	<b>0.118</b>	<b>0.001</b>	<b>19.3</b>	0.130	0.063	65.0%	566,847	66,192	250.1%	3.1%	
= KGL Logistics Co.	LOGK.KW	NM	0.25	0.00%	<b>0.77</b>	<b>0.032</b>	0.000	<b>23.4</b>	0.034	0.027	12.8%	0	0	21.7%	NM	
▼ Integrated holding Co.	INTEGRATED.KW	NM	1.57	0.00%	<b>0.47</b>	<b>0.376</b>	(0.001)	<b>95.1</b>	0.399	0.310	2.7%	2,114,992	799,456	108.8%	NM	
= Umm Al-Qaiwain General Investments Co.	QIC.KW	9.9	0.67	5.05%	<b>0.18</b>	<b>0.099</b>	0.000	<b>35.9</b>	0.099	0.063	32.0%	0	0	1.2%	6.8%	
▼ Fujairah Cement Industries Co.	FCEM.KW	NM	0.28	0.00%	<b>0.46</b>	<b>0.057</b>	(0.000)	<b>20.1</b>	0.069	0.028	65.2%	50,101	2,767	20.1%	NM	
▲ Ras-Al-Khaimah for White Cement Co.	RKWC.KW	29.8	1.09	3.68%	<b>0.14</b>	<b>0.136</b>	<b>0.003</b>	<b>68.0</b>	0.175	0.061	109.2%	31,420	4,252	4.8%	3.7%	
= Jassim Transport & Stevedoring Co.	JTC.KW	26.4	1.46	4.94%	<b>NA</b>	<b>0.405</b>	0.000	<b>60.8</b>	0.450	0.395	0.0%	381,650	154,588	25.0%	5.5%	
<b>Industrials</b>		<b>33.9</b>	<b>1.45</b>	<b>2.28%</b>				<b>4,403.9</b>			<b>38.7%</b>	<b>21,676,988.0</b>	<b>8,177,792</b>		<b>4.3%</b>	

**Boursa Kuwait Daily Bulletin**

Tuesday, November 16, 2021

Company	Reuters Ticker	Valuation Multiples				Price (KWD)		MKT Cap (KWD Mn.)	52 Weeks High (KWD)	52 Weeks Low (KWD)	YTD-21 Return #	Daily Trading Data			YTD-21 Capital Turnover	ROE
		Trailing P/E (X)	Trailing P/BV (X)	Dividend Yield	Beta	Closing	DTD Change					Volume (Shrs.)	Value (KWD)	YTD-21		
▲ Palms Agro Production Co.	PAPK.KW	NM	0.66	0.00%	0.26	0.075	0.004	3.9	0.090	0.050	16.1%	110,000	7,900	2.2%	NM	
▼ Livestock Transport & Trading Co.	CATT.KW	NM	1.04	0.00%	0.26	0.188	(0.001)	40.7	0.210	0.177	6.8%	10,500	1,964	11.2%	NM	
▼ Mezzan Holding Co.	MEZZ.KW	19.1	1.73	2.86%	0.44	0.605	(0.012)	192.1	0.679	0.554	1.5%	572,715	352,121	31.4%	9.1%	
<b>Consumer Goods</b>		<b>34.9</b>	<b>1.52</b>	<b>2.32%</b>				<b>236.8</b>			<b>2.0%</b>	<b>693,215</b>	<b>361,985</b>		<b>4.4%</b>	
▼ Advanced Technology Co.	ATCK.KW	13.0	1.20	3.00%	0.01	0.500	(0.007)	75.0	0.600	0.401	(12.3%)	2,872	1,441	1.0%	9.2%	
= Yiac Medical Co.	YIAC.KW	NM	4.58	0.00%	NA	0.448	0.000	7.7	0.825	0.403	(46.7%)	0	0	1.4%	NM	
= Al-Maidan Clinic For Oral Health Services Co.	MIDAN.KW	31.6	19.05	0.81%	NA	1.240	0.000	310.0	1.240	1.200	0.0%	0	0	0.1%	60.3%	
<b>Health Care</b>		<b>25.5</b>	<b>4.87</b>	<b>1.21%</b>				<b>392.7</b>			<b>(4.2%)</b>	<b>2,872</b>	<b>1,441</b>		<b>19.1%</b>	
▲ Kuwait National Cinema Co.	KCIN.KW	NM	1.40	0.00%	0.31	0.933	0.031	94.3	0.990	0.700	24.4%	1	1	1.3%	NM	
▲ Kuwait Hotels Co.	KHOT.KW	10.5	1.24	0.00%	NA	0.092	(0.000)	5.3	0.113	0.050	55.3%	1,000	92	20.0%	11.8%	
▼ Sultan Center Food Products Co.	SCFK.KW	51.3	1.51	0.00%	0.43	0.244	(0.004)	70.6	0.269	0.097	144.0%	1,494,485	368,201	65.3%	3.0%	
▲ IFA Hotels & Resorts Co.*	IFAH.KW	NM	9.17	0.00%	0.30	0.066	0.002	41.9	0.071	0.019	237.9%	1,905,475	124,908	135.9%	NM	
▼ Oula Fuel Marketing Co.	OULA.KW	13.6	0.93	3.08%	0.47	0.160	(0.001)	64.7	0.178	0.114	30.1%	193,490	30,922	23.6%	6.9%	
▼ Kuwait Resorts Co.	MUNK.KW	31.0	0.76	1.90%	0.70	0.105	(0.001)	22.1	0.112	0.060	66.1%	1,967,322	207,831	199.4%	2.4%	
▲ Jazeera Airways Co.	JAZK.KW	NM	186.15	0.00%	0.72	1.220	0.001	244.0	1.345	0.588	67.1%	438,095	537,728	49.9%	NM	
= Soor Fuel Marketing Co.	SOOR.KW	18.4	1.02	3.08%	0.47	0.161	0.000	65.2	0.175	0.116	32.0%	84,659	13,495	11.5%	5.5%	
▼ Future Kid Entertainment and R.E Co.	KIDK.KW	NM	0.85	0.00%	0.03	0.083	(0.000)	9.6	0.122	0.064	(2.4%)	163,295	13,545	180.4%	NM	
▲ Jiyad Holding Co	KIYAD.KW	NM	0.84	0.00%	0.65	0.088	0.001	30.8	0.099	0.036	98.9%	103,523	8,977	40.9%	NM	
▲ Al Eid Food Co.	ALEID.KW	21.6	2.02	1.50%	NA	0.277	0.002	40.1	0.310	0.069	300.5%	93,486	25,648	119.9%	9.4%	
<b>Consumer Services</b>		<b>NM</b>	<b>1.94</b>	<b>0.73%</b>				<b>688.6</b>			<b>64.2%</b>	<b>6,444,831</b>	<b>1,331,348</b>		<b>NM</b>	
▼ Zain	ZAIN.KW	13.7	2.23	3.36%	1.35	0.595	(0.001)	2,574.6	0.641	0.581	(1.8%)	2,565,286	1,528,931	15.6%	16.2%	
▲ National Mobile Telecom Co.	OORE.KW	39.1	0.63	2.21%	0.47	0.674	0.006	339.7	0.711	0.620	7.5%	60,300	40,377	1.8%	1.6%	
▼ AAN digital services Co.	AAN.KW	NM	0.70	0.00%	1.32	0.019	(0.000)	16.3	0.020	0.011	50.8%	39,828,507	748,025	327.5%	NM	
▲ Kuwait Telecommunication Co.	STC.KW	13.1	2.06	6.97%	0.55	0.861	0.002	430.0	0.970	0.822	1.1%	191,756	165,135	5.0%	15.7%	
▲ Hayat Communications Co.	HAYK.KW	NM	1.03	0.00%	1.14	0.120	0.006	11.1	0.124	0.051	114.3%	402,849	47,958	151.3%	NM	
<b>Telecommunications</b>		<b>14.8</b>	<b>1.74</b>	<b>3.68%</b>				<b>3,371.7</b>			<b>(0.2%)</b>	<b>43,048,698</b>	<b>2,530,426</b>		<b>11.8%</b>	
▲ National Bank of Kuwait	NBKK.KW	25.2	2.23	1.81%	1.27	1.037	0.007	7,458.8	1.057	0.792	29.6%	5,987,896	6,194,535	15.0%	8.9%	
▲ Gulf Bank	GBKK.KW	23.6	1.23	1.83%	1.13	0.260	0.002	792.5	0.265	0.205	18.7%	4,956,985	1,288,840	75.0%	5.2%	
= Commercial Bank of Kuwait	CBKK.KW	55.8	1.31	0.00%	0.38	0.502	0.000	1,000.0	0.605	0.485	0.4%	0	0	3.6%	2.3%	
= Ahli Bank of Kuwait	ABKK.KW	NM	0.83	0.00%	0.66	0.249	0.000	423.3	0.264	0.186	25.1%	609,555	151,782	12.1%	NM	
▲ Ahli United Bank - Kuwait	BKME.KW	25.8	1.69	0.00%	0.85	0.326	0.003	776.7	0.332	0.258	24.1%	452,748	147,348	5.2%	6.6%	
= Kuwait International Bank	KIBK.KW	NM	0.98	0.00%	1.01	0.223	0.000	252.6	0.233	0.198	7.2%	5,157,299	1,151,783	95.7%	0.8%	
= Burgan Bank	BURG.KW	20.7	1.07	1.81%	1.05	0.231	0.000	723.3	0.240	0.195	29.4%	474,091	65,335	17.2%	5.1%	
▲ Kuwait Finance House	KFH.KW	36.8	3.81	1.07%	1.40	0.844	0.005	7,124.7	0.849	0.611	37.1%	7,614,930	6,403,061	16.0%	10.3%	
▲ Boubyan Bank	BOUK.KW	67.5	4.82	0.00%	1.05	0.822	0.006	2,613.7	0.829	0.516	52.0%	525,790	431,664	8.1%	7.1%	
▲ Warba Bank	WARB.KW	17.8	2.39	0.00%	0.99	0.301	0.009	474.1	0.301	0.228	27.5%	6,556,646	1,957,152	39.9%	13.4%	
▲ Ahli United Bank - Bahrain	AUBK.KW	21.5	2.33	1.26%	1.13	0.290	0.004	2,939.0	0.297	0.204	33.0%	8,709,495	2,523,401	33.3%	10.8%	
<b>Banks</b>		<b>32.3</b>	<b>2.33</b>	<b>1.12%</b>				<b>24,578.7</b>			<b>30.7%</b>	<b>41,045,435</b>	<b>20,314,902</b>		<b>7.2%</b>	



**Boursa Kuwait Daily Bulletin**

Tuesday, November 16, 2021

Company	Reuters Ticker	Valuation Multiples				Price (KWD)		MKT Cap (KWD Mn.)	52 Weeks High (KWD)	52 Weeks Low (KWD)	YTD-21 Return #	Daily Trading Data			YTD-21 Capital Turnover	ROE
		Trailing P/E (X)	Trailing P/BV (X)	Dividend Yield	Beta	Closing	DTD Change					Volume (Shrs.)	Value (KWD)	YTD-21		
= Kuwait Insurance Co.	KINS.KW	7.4	0.72	7.25%	0.01	0.394	0.000	76.5	0.459	0.360	2.3%	21,754	8,571	11.8%	9.9%	
▼ Gulf Insurance Group	GINS.KW	17.1	2.42	0.00%	0.07	1.100	(0.001)	313.0	1.200	0.536	36.3%	168,894	186,441	2.0%	14.1%	
= Ahleiah Insurance Co.	AINS.KW	8.5	0.92	4.64%	0.13	0.505	0.000	111.4	0.561	0.419	12.8%	0	0	5.5%	10.8%	
▲ Warba Insurance Co.	WINS.KW	11.5	0.75	4.49%	0.37	0.161	0.003	29.7	0.176	0.077	99.3%	518,008	82,269	96.1%	6.5%	
= Kuwait Reinsurance Co.	KWRE.KW	13.7	1.28	1.32%	0.14	0.350	0.000	77.1	0.527	0.212	80.9%	0	0	0.1%	9.4%	
▼ First Takaful Insurance Co.	FTIK.KW	NM	0.85	0.00%	0.34	0.064	(0.003)	6.8	0.081	0.034	73.0%	50,000	3,200	9.0%	NM	
= Wethaq Takaful Insurance Co.	WETH.KW	29.2	0.54	0.00%	0.45	0.059	0.000	6.5	0.102	0.020	191.2%	853,186	51,894	325.6%	1.8%	
= Bahrain Kuwait Insurance Co.	BKIK.KW	8.7	0.85	7.85%	0.02	0.191	0.000	27.3	0.000	0.000	(4.5%)	0	0	0.0%	9.7%	
<b>Insurance</b>		<b>12.4</b>	<b>1.28</b>	<b>2.34%</b>				<b>648.3</b>			<b>51.4%</b>	<b>1,611,842</b>	<b>332,375</b>		<b>10.3%</b>	
▲ Sokouk Holding Co.	SHCK.KW	NM	0.84	0.00%	1.15	0.035	0.001	20.8	0.038	0.022	50.2%	1,619,624	55,686	106.3%	NM	
▲ Kuwait Real Estate Co.	KREK.KW	35.1	1.33	0.00%	0.97	0.181	0.002	171.5	0.187	0.100	74.4%	2,407,065	434,533	226.3%	3.8%	
▲ United Real Estate Co.	UREK.KW	NM	0.54	0.00%	0.41	0.081	0.001	96.2	0.085	0.043	72.3%	402,251	32,252	11.6%	NM	
▲ National Real Estate Co.	NREK.KW	38.0	1.38	0.00%	1.18	0.230	0.006	379.7	0.233	0.071	252.3%	20,948,368	4,769,168	129.3%	3.6%	
▲ Sallhia Real Estate Co.	SREK.KW	70.7	1.91	5.01%	0.34	0.577	0.003	295.8	0.607	0.501	14.7%	50,680	29,276	15.1%	2.7%	
▲ Tamdeen Real Estate Co.	TAMK.KW	NM	0.88	0.00%	0.13	0.345	0.005	149.0	0.374	0.235	27.8%	203,971	70,099	6.2%	NM	
▲ Ajjal Real Estate Entertainment Co.	AREC.KW	21.4	0.48	0.00%	0.49	0.315	0.002	61.3	0.345	0.170	72.1%	433,000	135,419	14.4%	2.2%	
▲ Al Massaleh Real Estate Co.	MREC.KW	NM	0.64	0.00%	0.28	0.055	0.002	12.9	0.085	0.030	60.5%	21,000	1,119	22.6%	NM	
▲ Arab Real Estate Co.	ARAB.KW	18.7	0.45	0.00%	1.20	0.046	0.001	23.5	0.052	0.025	79.0%	5,532,348	254,683	103.1%	2.4%	
▲ AL-Enma'a Real Estate Co.*	ENMA.KW	NM	0.84	0.00%	0.68	0.082	0.002	37.1	0.091	0.047	70.4%	1,143,005	93,911	112.1%	0.4%	
▲ Mabane Co.	MABK.KW	21.2	1.97	0.67%	1.11	0.841	0.009	985.1	0.868	0.611	35.7%	430,367	361,339	12.1%	9.3%	
= Injazzat Real Estate Development Co.	INJA.KW	NM	0.71	0.00%	0.20	0.109	0.000	37.7	0.113	0.067	46.3%	1,099,657	119,506	118.8%	0.6%	
▲ Investors Holding Group Co.	INVK.KW	NM	0.79	0.00%	1.20	0.016	0.000	9.9	0.020	0.013	(9.1%)	8,504,925	134,793	301.3%	NM	
▲ The Commercial Real Estate Co.	TIJK.KW	62.7	0.89	2.10%	0.57	0.136	0.002	250.3	0.140	0.091	23.0%	683,078	92,135	48.4%	1.4%	
▲ Sanam Real Estate Co.	SANK.KW	NM	1.13	0.00%	0.39	0.086	0.013	10.5	0.082	0.028	148.7%	4,227,937	343,743	65.4%	NM	
▲ A'ayan Real Estate Co.	AYRE.KW	NM	0.69	0.00%	0.59	0.098	0.003	40.7	0.116	0.057	69.0%	2,988,534	288,367	129.7%	NM	
▲ Aqar Real Estate Investment Co.	AQAR.KW	NM	0.82	0.00%	NA	0.087	0.003	21.5	0.098	0.058	48.1%	714,008	61,935	102.0%	NM	
▼ Kuwait Real Estate Holding Co.	ALAQ.KW	10.9	0.97	0.00%	0.52	0.053	(0.000)	10.1	0.059	0.024	111.2%	353,879	18,699	61.7%	8.9%	
▲ MAZAYA Holding Co.	MAZA.KW	NM	0.86	0.00%	0.99	0.081	0.001	56.0	0.122	0.056	42.3%	6,040,480	489,550	398.3%	NM	
▲ Tijara Real Estate & Investment Co.	TIJA.KW	48.8	0.62	0.00%	0.31	0.066	0.002	24.2	0.073	0.042	56.0%	2,899,423	188,275	211.7%	1.3%	
▲ Al TAMEER Real Estate Investment Co.	AMAR.KW	25.0	0.76	0.00%	0.97	0.048	0.002	11.5	0.052	0.018	140.5%	5,735,791	274,400	243.6%	3.0%	
▼ Arkan Al-Kuwait Real Estate Co. *	ARKK.KW	22.2	1.10	2.70%	0.24	0.148	(0.001)	37.2	0.152	0.086	74.5%	100,040	14,397	14.9%	5.0%	
▼ Al-Argan International Real Estate Co.	ARGK.KW	NM	0.38	0.00%	0.38	0.111	(0.005)	29.4	0.124	0.091	0.9%	16,200	1,804	1.4%	NM	
▼ Munshaat Real Estate Projects Co.	MUNS.KW	NM	2.57	0.00%	0.62	0.073	(0.001)	23.3	0.121	0.045	3.0%	897,366	64,152	11.1%	NM	
▲ First Dubai For Real Estate Development	FIRST.KW	NM	1.10	0.00%	1.44	0.081	0.002	81.4	0.088	0.040	98.5%	1,944,873	157,108	49.4%	1.2%	
▲ Kuwait Business Town Real Estate Co.	KBTk.KW	NM	0.87	0.00%	1.09	0.090	0.003	54.5	0.104	0.038	127.8%	325,931	29,239	93.6%	NM	
= Real Estate Asset Management Co.	REAM.KW	NM	0.69	0.00%	0.09	0.090	0.000	9.9	0.000	0.000	0.0%	0	0	0.0%	NM	
▲ MENA Real Estate Co. *	MENK.KW	NM	0.76	0.00%	0.98	0.089	0.005	12.1	0.105	0.027	218.7%	7,462,397	648,365	568.1%	NM	
= Al Mudon International Real Estate Co.	ALMK.KW	NM	0.17	0.00%	0.83	0.021	0.000	2.1	0.027	0.019	14.4%	0	0	110.8%	NM	
▼ Real Estate Trade Centers Co.	MARA.KW	NM	0.71	0.00%	0.39	0.115	(0.002)	17.3	0.123	0.027	316.7%	3,020	347	29.1%	NM	
▼ Kuwait Remal Real Estate Co.	REMAK.KW	NM	0.80	0.00%	0.88	0.021	(0.000)	6.3	0.028	0.016	2.5%	21,332,959	459,969	111.7%	NM	
▲ Mashaer Holding Co.	MASHAER.KW	NM	0.84	0.00%	0.53	0.079	0.001	14.2	0.086	0.056	34.8%	44,134	3,477	49.8%	NM	
= Ajwan Gulf Real Estate Co.	AJWN.KW	NM	0.35	0.00%	0.56	0.011	0.000	2.2	0.000	0.000	0.0%	0	0	0.0%	NM	
▲ Al Masaken Intl. Real Estate Dev. Co.	MASKN.KW	NM	0.82	0.00%	0.16	0.053	0.003	5.3	0.069	0.025	114.6%	847,622	43,572	533.8%	NM	
▲ Dalqan Real Estate Co.	DALQ.KW	NM	1.92	0.00%	NA	0.259	0.011	12.8	0.300	0.198	(5.5%)	7,709	1,983	44.9%	0.6%	
= Dar Al Thuraya Real Estate Co.	THURY.KW	31.4	0.95	0.00%	NA	0.104	0.000	15.2	0.128	0.046	64.0%	0	0	4.0%	3.0%	
▼ Osos Holding Group Co.	OSOS.KW	14.1	1.06	6.03%	0.28	0.116	(0.003)	12.2	0.131	0.083	28.9%	695,515	81,705	67.5%	7.5%	
▼ KFH Capital REIT	BAITAKREIT.KW	NA	NA	1.51%	NA	1.229	(0.001)	29.0	1.311	1.018	20.4%	4,056	4,986	13.2%	NA	
▲ Land United Real Estate Co.	LAND.KW	NM	0.88	0.00%	NA	0.104	0.002	15.6	0.200	0.095	(19.4%)	892,970	92,054	42.0%	NM	
<b>Real Estate</b>		<b>NM</b>	<b>1.14</b>	<b>0.94%</b>				<b>3,085.6</b>			<b>50.3%</b>	<b>101,014,183</b>	<b>9,852,045</b>		<b>NM</b>	

**Boursa Kuwait Daily Bulletin**

Tuesday, November 16, 2021

Company	Reuters Ticker	Valuation Multiples				Price (KWD)		MKT Cap (KWD Mn.)	52 Weeks High (KWD)	52 Weeks Low (KWD)	YTD-21 Return #	Daily Trading Data		YTD-21 Capital Turnover	ROE
		Trailing P/E (X)	Trailing P/BV (X)	Dividend Yield	Beta	Closing	DTD Change					Volume (Shrs.)	Value (KWD)		
▼ Kuwait Investment Co.	KINV.KW	6.4	1.36	0.00%	0.75	0.296	(0.001)	163.2	0.317	0.119	142.6%	122,416	36,132	66.1%	21.3%
= Commercial Facilities Co.	FACI.KW	5.9	0.75	4.38%	0.53	0.216	0.000	115.9	0.220	0.168	13.7%	506,158	109,326	12.9%	12.6%
▲ Int'l Financial Advisors Co.	IFIN.KW	1.5	1.14	0.00%	1.26	0.119	0.003	31.7	0.145	0.059	99.0%	2,471,326	293,727	573.6%	75.6%
▼ National Investment Co.	NINV.KW	8.6	1.10	4.23%	1.25	0.237	(0.003)	207.7	0.248	0.128	75.6%	590,831	140,151	50.7%	12.8%
▼ Kuwait Projects Co.(Holding)	KPRO.KW	NM	1.35	3.51%	0.59	0.140	(0.001)	280.0	0.170	0.140	(11.9%)	795,831	111,604	17.8%	0.3%
▲ Coast Invest. & Development Co.	COAS.KW	NM	1.15	0.00%	1.30	0.118	0.001	54.9	0.127	0.050	143.3%	1,351,252	157,760	149.1%	NM
▲ The Securities House Co.	SECH.KW	NM	1.10	0.00%	1.14	0.111	0.001	50.0	0.117	0.052	160.6%	3,812,477	419,613	398.0%	NM
▼ Arzan Financial Group For Fin. & Invest.	ARZA.KW	51.3	1.24	0.00%	1.02	0.167	(0.001)	134.1	0.183	0.055	199.3%	2,733,053	458,203	313.7%	2.4%
= Kuwait Financial Centre	MARKZ.KW	5.1	0.94	0.00%	0.78	0.198	0.000	95.2	0.207	0.080	137.4%	93,140	18,341	109.2%	18.5%
▲ Kuwait & M.E. Financial Inv. Co.	KMEF.KW	12.2	1.22	0.00%	0.58	0.138	0.001	30.4	0.198	0.123	13.1%	178,260	24,275	14.0%	10.0%
= First Investment Co.	OLAK.KW	NM	0.79	0.00%	1.05	0.082	0.000	36.4	0.095	0.039	90.0%	4,133,000	339,206	726.1%	NM
= Al-Mal Investment Co.	MALK.KW	NM	0.25	0.00%	1.14	0.006	0.000	1.8	0.000	0.000	0.0%	0	0	0.0%	NM
= Gulf Investment House	GIHK.KW	26.1	4.66	0.00%	1.00	0.309	0.000	200.5	0.340	0.076	271.4%	11,100	3,430	76.5%	17.9%
▲ A'ayan Leasing & Investment Co.	AAAY.KW	4.0	1.35	0.00%	1.25	0.160	0.002	114.2	0.204	0.097	74.1%	1,801,287	286,340	338.6%	34.1%
▲ Bayan Investment Co.	BAYK.KW	NM	0.55	0.00%	0.79	0.057	0.001	22.4	0.065	0.032	36.7%	1,273,646	72,007	176.7%	NM
▲ Osoul Investment Co.	OSUL.KW	36.7	0.82	0.00%	0.45	0.096	0.001	14.1	0.106	0.061	19.4%	3,100	295	36.2%	2.2%
▲ Kuwait Finance & Investment Co.	KFSK.KW	5.6	0.67	0.00%	0.35	0.087	0.001	28.1	0.125	0.042	102.3%	520,152	45,190	57.2%	12.0%
▼ Kamco Investment Co.	KAMC.KW	6.4	0.84	0.00%	0.44	0.141	(0.002)	48.3	0.149	0.072	90.8%	2,618,014	370,286	76.3%	13.1%
▲ National International Holding Co.	NIHK.KW	NM	1.03	0.00%	0.67	0.163	0.003	37.1	0.179	0.069	96.9%	160,301	26,049	129.0%	NM
▲ UniCap Investment and Finance	UNICAP.KW	7.8	1.00	0.00%	0.69	0.083	0.001	19.8	0.097	0.036	96.4%	90,380	7,447	112.1%	12.8%
▼ Al Madar Finance & Investment Co.	MADR.KW	NM	1.12	0.00%	0.37	0.113	(0.003)	24.2	0.156	0.086	24.0%	444,640	50,876	99.2%	NM
= Al-Deera Holding	DEER.KW	NM	1.41	0.00%	1.01	0.195	0.000	17.9	0.223	0.018	118.8%	0	0	337.9%	0.1%
▼ Al-Safat Investment Co.	ALSAFAT.KW	3.3	1.41	0.00%	NA	0.129	(0.004)	33.1	0.157	0.120	0.0%	8,976,740	1,160,466	111.2%	43.3%
▲ Al Salam Group Holding Co.	SAGH.KW	NM	0.34	0.00%	1.30	0.032	0.002	8.6	0.037	0.024	26.2%	5,851,813	186,304	327.5%	NM
▲ Ektitab Holding Co.	EKTT.KW	NM	0.49	0.00%	0.97	0.021	0.000	6.6	0.024	0.015	37.7%	3,055,620	63,445	203.3%	NM
= Al Madina For Finance & Investment Co.	MADI.KW	1.8	0.43	0.00%	1.18	0.016	0.000	6.6	0.019	0.015	3.2%	0	0	105.7%	23.8%
▲ NOOR Financial Investment Co.	NOOR.KW	9.3	1.87	1.70%	1.21	0.363	0.001	145.1	0.399	0.168	113.5%	325,093	118,218	38.5%	20.2%
= Tamdeen Investment Co.	TAMI.KW	NM	0.55	0.00%	0.34	0.389	0.000	134.2	0.414	0.200	25.5%	0	0	3.7%	NM
▼ Kuwait Syrian Holding Co.	KSHC.KW	28.3	1.23	0.00%	0.68	0.049	(0.005)	8.7	0.060	0.025	54.9%	2,473,170	127,589	36.7%	4.3%
▲ Asiya Capital Investment Co.	ASIYA.KW	35.2	0.58	0.00%	0.52	0.052	0.001	41.6	0.057	0.034	41.7%	173,251	8,883	61.9%	1.6%
▲ Gulf North Africa Holding Co.	GNAH.KW	72.2	1.17	0.00%	1.03	0.085	0.002	12.8	0.085	0.057	30.4%	684,824	57,872	22.1%	1.6%
▲ Alimtiiaz Investment Group	ALIMK.KW	NM	0.77	0.00%	0.98	0.126	0.001	142.8	0.142	0.106	12.5%	1,848,712	234,238	105.8%	NM
▲ Manazel Holding Co.	MANK.KW	29.3	1.12	0.00%	1.36	0.054	0.002	23.3	0.060	0.031	70.7%	3,093,888	165,359	262.3%	3.8%
▼ National Industries Group	NIND.KW	7.4	1.07	0.00%	1.44	0.287	(0.002)	409.8	0.296	0.165	63.1%	6,400,948	1,849,269	106.8%	14.5%
▼ Warba Capital Holding Co.	WARBACAP.KW	NM	0.70	0.00%	0.68	0.110	(0.001)	5.5	0.145	0.045	126.3%	31,790	3,499	128.0%	NM
▼ Arabi Holding Group Co.	AGHC.KW	45.1	1.03	0.00%	0.15	0.181	(0.009)	31.3	0.228	0.102	(8.6%)	905,198	165,818	86.9%	2.3%
▲ Privatization Holding Co.	KPPC.KW	21.4	0.48	0.00%	0.79	0.061	0.000	37.5	0.070	0.039	53.1%	2,454,052	149,594	227.2%	2.2%
▲ Credit Rating & Collection Co.	TAHS.KW	NM	1.78	0.00%	0.00	0.052	0.010	8.5	0.056	0.020	135.0%	5,469,161	271,523	20.3%	NM
▼ Egypt Kuwait Holding Co.	EKHK.KW	13.6	2.81	0.00%	0.18	0.446	(0.013)	502.6	0.465	0.293	38.2%	1,917,789	862,426	5.4%	20.7%
▲ GFH Financial Group	GFH.KW	18.3	1.31	1.85%	0.86	0.098	0.006	369.3	0.104	0.047	108.5%	78,678,917	7,436,725	89.8%	7.2%
▲ Inovest	INOV.KW	NM	0.80	0.00%	0.74	0.113	0.002	34.0	0.134	0.063	72.3%	1,554,825	172,874	292.7%	NM
▲ Al Bareeq Holding	BAREEQ.KW	NM	0.68	0.00%	NA	0.041	0.001	30.9	0.102	0.034	(37.6%)	8,071,667	333,434	160.8%	NM
▼ Amar For Finance and Leasing Co.	AMARF.KW	14.6	0.82	0.00%	0.08	0.074	(0.006)	14.7	0.097	0.039	51.1%	10,336,726	785,726	30.0%	5.6%
▲ Al-Manar Financing & Leasing Co.	ALMANAR.KW	NM	0.74	0.00%	0.53	0.073	0.001	22.5	0.085	0.048	47.0%	940,464	66,408	33.7%	NM
▲ Boursa Kuwait Securities Co	BOURSA.KW	14.2	7.58	2.02%	0.75	1.985	0.035	398.5	2.432	1.091	80.5%	443,313	876,578	44.6%	53.2%
<b>Financial Services</b>		<b>13.5</b>	<b>1.26</b>	<b>0.99%</b>				<b>4,156.3</b>			<b>53.8%</b>	<b>167,398,325</b>	<b>18,066,509</b>		<b>9.3%</b>

# Boursa Kuwait Daily Bulletin

Tuesday, November 16, 2021

Company	Reuters Ticker	Valuation Multiples				Price (KWD)			MKT Cap (KWD Mn.)	52 Weeks High (KWD)	52 Weeks Low (KWD)	YTD-21 Return #	Daily Trading Data		YTD-21 Capital Turnover	ROE
		Trailing P/E (X)	Trailing P/BV (X)	Dividend Yield	Beta	Closing	DTD Change	Volume (Shrs.)					Value (KWD)			
▲ Automated Systems Co.	ASCK.KW	NM	0.89	0.00%	0.17	0.104	0.001	10.4	0.122	0.068	50.5%	72,356	7,422	38.4%	NM	
<b>Technology</b>		<b>NM</b>	<b>0.89</b>	<b>0.00%</b>		<b>10.4</b>		<b>50.5%</b>				<b>72,356</b>	<b>7,422</b>		<b>NM</b>	
▼ Shamal Az-Zour Al-Oula Power and Water Co.	AZNOULA.KW	20.7	5.00	5.02%	0.67	0.239	(0.001)	262.9	0.276	0.220	(13.7%)	1,335,330	320,573	37.9%	24.2%	
<b>Utilities</b>		<b>20.7</b>	<b>5.00</b>	<b>5.02%</b>		<b>262.9</b>		<b>(13.7%)</b>				<b>1,335,330</b>	<b>320,573</b>		<b>24.2%</b>	
<b>Boursa Kuwait</b>		<b>28.9</b>	<b>1.83</b>	<b>1.56%</b>				<b>43,122.6</b>			<b>30.68%</b>	<b>399,217,305</b>	<b>62,259,989</b>		<b>6.3%</b>	

## Year-to-Date 2021 Top Movers & Most Active Stocks

YTD Top % Gainers	Close (KWD)	Percent Change
Real Estate Trade Centers Co.	0.115	316.7%
Al Eid Food Co.	0.277	300.5%
Gulf Investment House	0.309	271.4%
National Real Estate Co.	0.230	252.3%
IFA Hotels & Resorts Co.	0.066	237.9%

YTD Most Active by Volume	Close (KWD)	Volume (Shrs.)
GFH Financial Group	0.098	3,391,880,548
Ahli United Bank - Bahrain	0.290	3,374,606,455
First Investment Co.	0.082	3,238,400,181
AAN Digital Services Co.	0.019	2,856,503,759
MAZAYA Holding Co.	0.081	2,741,697,938

YTD Top % Losers	Close (KWD)	Percent Change
Yiaco Medical Co.	0.448	(46.7%)
Al Bareeq Holding	0.041	(37.6%)
Al Kout for Industrial Projects Co.	0.449	(33.5%)
National Petroleum Services Co.	0.844	(19.5%)
Land United Real Estate Co.	0.104	(19.4%)

YTD Most Active by Value	Close (KWD)	Value (KWD)
Kuwait Finance House	0.844	1,032,646,723
National Bank of Kuwait	1.037	941,755,122
Ahli United Bank - Bahrain	0.290	799,677,104
Agility (PWC Logistics)	1.042	612,790,630
Gulf Bank	0.260	528,035,409

\* Different Fiscal Year Company

### Disclaimer & Important Disclosures

Kamco Invest is authorized and fully regulated by the Capital Markets Authority ("CMA, Kuwait") and partially regulated by the Central Bank of Kuwait ("CBK").

This document is provided for informational purposes only. Nothing contained in this document constitutes investment, an offer to invest, legal, tax or other advice or guidance and should be disregarded when considering or making investment decisions. In preparing this document, Kamco Invest did not take into account the investment objectives, financial situation and particular needs of any particular person. Accordingly, before acting on this document, investors should independently evaluate the investments and strategies referred to herein and make their own determination of whether it is appropriate in light of their own financial circumstances and objectives. The entire content of this document is subject to copyright with all rights reserved. This research and the information contained herein may not be reproduced, distributed or transmitted in Kuwait or in any other jurisdiction to any other person or incorporated in any way into another document or other material without our prior written consent.

**Analyst Certification**  
Each of the analysts identified in this report, if any and where applicable, certifies, with respect to the sector, companies or securities that the individual analyses, that (1) the views expressed in this report reflect his or her personal views about all of the subject companies and securities and (2) no part of his or her compensation was, is or will be directly or indirectly dependent on the specific recommendations or views expressed in this report.

**Kamco Invest Ratings**  
Kamco Invest research is based on the analysis of regional and country economics, industries and company fundamentals. Kamco Invest company research reflects a long-term (12-month) target price for a company or stock. The ratings bands are:  
**Outperform:** Target Price represents expected returns >= 10% in the next 12 months  
**Neutral:** Target Price represents expected returns between -10% and +10% in the next 12 months  
**Underperform:** Target Price represents an expected return of <-10% in the next 12 months  
 In certain circumstances, ratings may differ from those implied by a fair value target using the criteria above. Kamco Invest policy is to maintain up-to-date fair value targets on the companies under its coverage, reflecting any material changes to the analyst's outlook on a company. Share price volatility may cause a stock to move outside the rating range implied by Kamco Invest's fair value target. Analysts may not necessarily change their ratings if this happens, but are expected to disclose the rationale behind their view to Kamco Invest clients.

Any terms and conditions proposed by you which are in addition to or which conflict with this Disclaimer are expressly rejected by Kamco Invest and shall be of no force or effect. The information contained in this document is based on current trade, statistical and other public information we consider reliable. We do not represent or warrant that such information is fair, accurate or complete and it should not be relied upon as such. Kamco Invest has no obligation to update, modify or amend this document or to otherwise notify a recipient thereof in the event that any opinion, forecast or estimate set forth herein, changes or subsequently becomes inaccurate. The publication is provided for informational uses only and is not intended for trading purposes. The information on publications does not give rise to any legally binding obligation and/or agreement, including without limitation any obligation to update such information. You shall be responsible for conducting your own investigation and analysis of the information contained or referred to in this document and of evaluating the merits and risks involved in the securities forming the subject matter of this or other such document. Moreover, the provision of certain data/information in the publication may be subject to the terms and conditions of other agreements to which Kamco Invest is a party.

Nothing in this document should be construed as a solicitation or offer, or recommendation, to acquire or dispose of any investment or to engage in any other transaction, or to provide any investment advice or service. This document is directed at Professional Clients and not Retail Clients within the meaning of CMA rules. Any other persons in receipt of this document must not rely upon or otherwise act upon it. Entities and individuals

**Kamco Investment Company (DIFC) Limited ("Kamco Invest DIFC")**, Office 205, Level 2, Gate Village 1, Dubai International Financial Centre, a wholly owned subsidiary of Kamco Investment Company KSC (Public), is regulated by the Dubai Financial Services Authority (DFSA). Kamco Invest DIFC may only undertake the financial services activities that fall within the scope of its existing DFSA licence. The information in this document may be distributed by Kamco Invest DIFC on behalf of Kamco Investment Company KSC (Public). This document is intended for Professional Clients or Market Counterparties only as defined by the DFSA, and no other person should act upon it.

This document may not be distributed in Saudi Arabia except to such persons as are permitted under the Offers of Securities Regulations issued by the Capital Market Authority. The Capital Market Authority does not make any representation as to the accuracy or completeness of this document, and expressly disclaims any liability whatsoever for any loss arising from, or incurred in reliance upon, any part of this document. The recipients of this document hereby should conduct their own due diligence on the accuracy of the information relating to the contents of this document. If you do not understand the contents of this document you should consult an authorized financial advisor.

**Risk Warnings**  
Any prices, valuations or forecasts are indicative and are not intended to predict actual results, which may differ substantially from those reflected. The value of an investment may go up as well as down. The value of and income from any investment may fluctuate from day to day as a result of changes in relevant economic markets (including, without limitation, foreseeable or unforeseeable changes in interest rates, foreign exchange rates, default rates, prepayment rates, political or financial conditions, etc.).

Past performance is not indicative of future results. Any opinions, estimates, valuations or projections (target prices and ratings in particular) are inherently imprecise and a matter of judgment. They are statements of opinion and not of fact, based on current expectations, estimates and projections, and rely on beliefs and assumptions. Actual outcomes and returns may differ materially from what is expressed or forecasted. There are no guarantees of future performance. Certain transactions, including those involving futures, options, and other derivatives, give rise to substantial risk and are not suitable for all investors. This document does not propose to identify or to suggest all of the risks (direct or indirect) which may be associated with the investments and strategies referred to herein.

**Conflict of Interest**  
Kamco Invest and its affiliates provide full investment banking services, and they and their directors, officers and employees, may take positions which conflict with the views expressed in this document. Salespeople, traders, and other professionals of Kamco Invest may provide oral or written market commentary or trading strategies to our clients and our proprietary trading desks that reflect opinions that are contrary to the opinions expressed in this document. Our asset management area, our proprietary trading desks and investing businesses may make investment decisions that are inconsistent with the recommendations or views expressed in this document. Kamco Invest may have or seek investment transactions, including those involving futures, options, and other derivatives, from the companies that are the subject of this document. Facts and views presented in this document have not been reviewed by, and may not reflect information known to, professionals in other Kamco Invest business areas, including investment banking personnel. United Gulf Bank, Bahrain owns majority of Kamco Invest's shareholding and this ownership may create, or may create the appearance of, conflicts of interest.

**No Liability & Warranty**  
Kamco Invest makes neither implied nor expressed representations or warranties and, to the fullest extent permitted by applicable law, we hereby expressly disclaim any and all express, implied and statutory representations and warranties of any kind, including, without limitation, any warranty as to accuracy, timeliness, completeness, and fitness for a particular purpose and/or non-infringement. Kamco Invest will accept no liability in any event including (without limitation) your reliance on the information contained in this document, any negligence for any damages or loss of any kind, including (without limitation) direct, indirect, incidental, special or consequential damages, expenses or losses arising out of, or in connection with your use or inability to use this document, or in connection with any error, omission, defect, computer virus or system failure, or loss of any profit, goodwill or