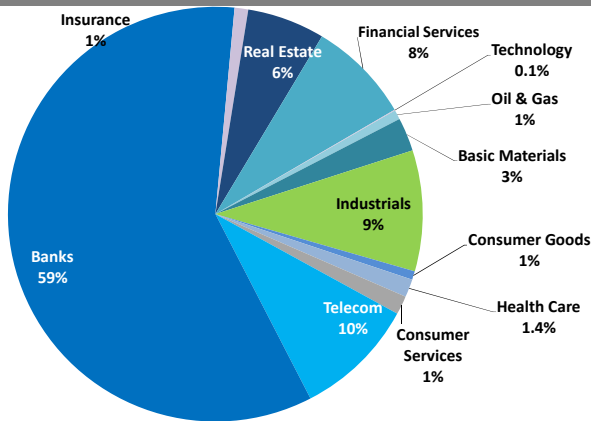


## Boursa Kuwait Daily Report

September 22, 2019

### Sector Weight by Market Cap



### Market Capitalization - Sector Returns

	Market Cap. (KWD Mn)	DTD % Chg	MTD % Chg	YTD % Chg
<b>Boursa Kuwait</b>	<b>32,849.5</b>	<b>▲ 2.2%</b>	<b>(4.5%)</b>	<b>13.2%</b>
Oil & Gas	242.8	▲ 1.8%	(0.9%)	6.7%
Basic Materials	860.5	▼ (1.3%)	(5.8%)	(16.6%)
Industrials	3,089.9	▲ 1.3%	(2.6%)	(9.2%)
Consumer Goods	224.5	▼ (1.8%)	(1.6%)	10.0%
Health Care	457.1	= 0.0%	(1.0%)	(2.6%)
Consumer Services	476.9	▼ (0.2%)	(2.3%)	(6.8%)
Telecommunications	3,109.8	▲ 1.2%	(3.4%)	14.4%
Banks	19,399.3	▲ 3.2%	(5.6%)	20.5%
Insurance	352.6	▼ (0.2%)	2.3%	(2.1%)
Real Estate	1,989.2	▲ 1.8%	(1.5%)	6.8%
Financial Services	2,626.4	▲ 0.6%	(3.0%)	25.2%
Technology	20.5	▼ (11.2%)	(14.9%)	(25.0%)

### Top 10 Companies by Market Capitalization

Company Name	Market Cap. (Mn KWD)	P/E (X)	ROE* (%)
1- National Bank of Kuwait	6,171.7	15.7	12.4%
2- Kuwait Finance House	4,695.2	19.6	12.7%
3- Ahli United Bank - Bahrain	2,386.6	10.9	18.5%
4- Zain	2,362.6	11.4	17.0%
5- Boubyan Bank	1,583.4	26.7	10.8%
6- Agility (PWC Logistics)	1,295.8	15.4	8.2%
7- Commercial Bank of Kuwait	996.0	14.8	9.2%
8- Gulf Bank	856.5	15.9	8.6%
9- Burgan Bank	832.1	10.8	10.3%
10- Mabane Co.	786.1	14.1	12.5%
<b>Total</b>	<b>21,966</b>	<b>15.08</b>	<b>12.6%</b>

\*: ROE is calculated based on TTM 1H-2019 net profit & shareholders' equity as of 30-June-19

### Top Movers and Most Active Stocks

Today's Top % Gainers	Close (KWD)	Change (KWD)	Percent Change
Kuwait & M.E. Financial Inv. Co.	0.095	0.013	15.4%
Kuwait Finance & Investment Co.	0.047	0.005	10.7%
Bayan Investment Co.	0.040	0.004	9.9%
Ekttitab Holding Co.	0.017	0.001	7.7%
Real Estate Trade Centers Co.	0.025	0.002	7.4%

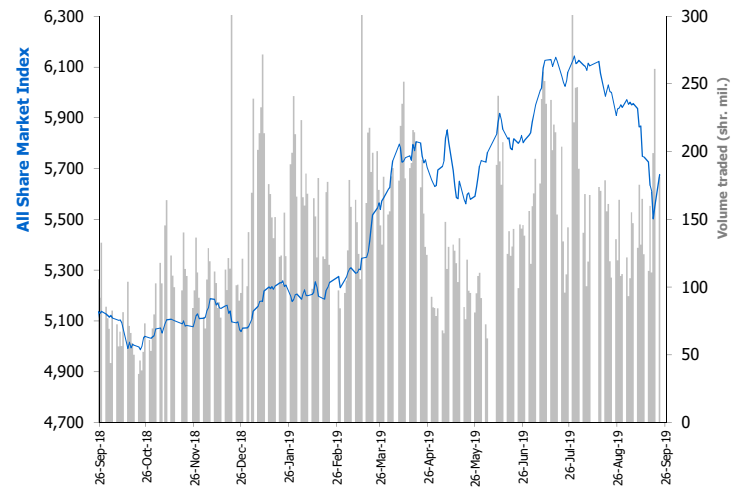
Today's Top % Losers	Close (KWD)	Change (KWD)	Percent Change
Egypt Kuwait Holding Co.	0.410	(0.045)	(9.9%)
Kuwait Foundry Co.	0.423	(0.036)	(7.8%)
The Energy House Co.	0.019	(0.002)	(7.3%)
Aqar Real Estate Investment Co.	0.065	(0.005)	(7.1%)
Ras-Al-Khaimah for White Cement Co.	0.062	(0.003)	(4.8%)

Today's Most Active by Volume	Close (KWD)	Percent Change	Volume (Shares)
Kuwait Finance House	0.673	5.7%	25,161,309
Ahli United Bank - Bahrain	0.272	4.6%	21,650,179
Gulf Bank	0.281	2.2%	17,384,600
National Industries Group	0.224	6.2%	14,165,604
Arzan Financial Group For Fin. & Invest.	0.026	6.1%	8,875,965

Source: Boursa Kuwait, KAMCO Research

Market Breadth	78	28	69
Benchmark Return	Closing Value	DTD Chg	MTD % Chg
Premier Market Index	6,185.07	175.2	2.9%
Main Market Index	4,685.35	18.1	0.4%
All Share Market Index	5,676.51	124.0	2.2%
Market Cap (KWD Mn)	32,849.54	711.1	2.2%

### Index Performance relative to Volume



### Market Trading Data and Volatility

Trading Indicators	Today's Value	DTD Chg	DTD % Chg	Average Daily YTD 2019	YTD 2018
Volume (Shrs Mn)	181.2	(79.9)	(30.6%)	159.0	85.8
Value Traded (KWD Mn)	53.4	(35.7)	(40.1%)	33.1	16.2
No. of Trades	8,808	(2,667)	(23.2%)	6,104	3,718

Today's Most Active by Value	Close (KWD)	Percent Change	Value (KWD)
Kuwait Finance House	0.673	5.7%	16,459,062
National Bank of Kuwait	0.946	1.7%	6,080,812
Ahli United Bank - Bahrain	0.272	4.6%	5,802,845
Gulf Bank	0.281	2.2%	4,874,420
Boubyan Petrochemicals Co.	0.750	(3.0%)	3,756,104

## Boursa Kuwait - Premier Market

Sunday, September 22, 2019

Premier Market Stocks	Closing Price			Market Capitalization			Valuation Multiples				ROE	YTD-19 Price Return	YTD-19 Trading Indicators	
	KWD	DTD Chg. (KWD)	D-T-D Return	KWD Mn	Weight in Premier Index	Weight in Boursa Kuwait	P/E (X)	P/BV (X)	Yield	Beta			Volume (Mn Shrs)	Value (KWD Mn)
▲ National Bank of Kuwait	0.946	0.016	1.7%	6,172	25.7%	18.8%	15.7	1.94	3.5%	1.32	12.4%	19.1%	879.88	823.75
▲ Gulf Bank	0.281	0.006	2.2%	857	3.6%	2.6%	15.9	1.37	3.4%	0.92	8.6%	11.5%	2,031.04	597.03
▲ Kuwait International Bank	0.274	0.015	5.8%	296	1.2%	0.9%	16.0	1.08	3.5%	1.00	6.8%	7.9%	719.71	205.96
▲ Burgan Bank	0.317	0.012	3.9%	832	3.5%	2.5%	10.8	1.11	3.6%	0.98	10.3%	19.7%	558.34	185.35
▲ Kuwait Finance House	0.673	0.036	5.7%	4,695	19.5%	14.3%	19.6	2.49	2.7%	1.59	12.7%	21.2%	1,373.36	944.27
▲ Boubyan Bank	0.549	0.010	1.9%	1,583	6.6%	4.8%	26.7	2.88	1.2%	0.92	10.8%	18.4%	187.12	107.13
▲ Kuwait Projects Co. (Holding)	0.220	0.005	2.3%	440	1.8%	1.3%	14.8	1.72	4.1%	0.75	11.6%	5.8%	177.98	38.66
▲ Mabane Co.	0.754	0.024	3.3%	786	3.3%	2.4%	14.1	1.77	1.5%	1.04	12.5%	31.9%	119.80	81.73
▲ National Industries Group (Holding)	0.224	0.013	6.2%	320	1.3%	1.0%	8.4	0.87	5.1%	1.35	10.4%	48.9%	1,218.45	267.58
▼ Boubyan Petrochemical Co.	0.750	(0.023)	(3.0%)	401	1.7%	1.2%	38.0	1.41	6.5%	0.71	3.7%	(23.1%)	66.03	57.15
▲ Qurain Petrochemicals Industries Co.	0.313	0.003	1.0%	344	1.4%	1.0%	9.9	0.81	4.8%	0.67	8.2%	(13.1%)	82.48	30.24
▲ Agility Public Warehousing Co.	0.735	0.023	3.2%	1,296	5.4%	3.9%	15.4	1.26	1.7%	1.48	8.2%	5.4%	262.23	205.13
▲ Mobile Telecommunications Co.	0.546	0.012	2.2%	2,363	9.8%	7.2%	11.4	1.94	5.5%	1.63	17.0%	21.6%	769.27	397.51
▼ Human Soft Holding Co.	3.075	(0.112)	(3.5%)	376	1.6%	1.1%	11.0	6.10	6.0%	0.42	55.5%	(6.2%)	26.24	84.48
▼ GFH Financial Group (B.S.C)	0.072	(0.000)	(0.4%)	264	1.1%	0.8%	7.1	0.84	6.0%	1.09	11.7%	(6.6%)	275.72	20.65
▲ Ahli United Bank (B.S.C)	0.272	0.012	4.6%	2,387	9.9%	7.3%	10.9	2.02	4.3%	0.82	18.5%	48.1%	2,450.57	632.94
▲ Warba Bank	0.247	0.003	1.2%	371	1.5%	1.1%	26.4	1.80	0.0%	0.92	6.8%	17.6%	636.09	153.73
▼ Mezzan Holding Co.	0.575	(0.008)	(1.4%)	179	0.7%	0.5%	22.0	1.65	2.7%	0.51	7.5%	15.0%	36.27	17.46
▲ Integrated Holding Co.	0.387	0.004	1.0%	85	0.4%	0.3%	7.5	1.32	10.3%	0.44	17.4%	(53.9%)	44.76	28.45
<b>Subtotal- Premier Market Stocks</b>	<b>5,676.51</b>	<b>124.00</b>	<b>2.23%</b>	<b>24,045</b>	<b>100%</b>	<b>73%</b>	<b>14.8</b>	<b>1.82</b>	<b>3.42%</b>		<b>12.3%</b>	<b>11.8%</b>	<b>11,915.32</b>	<b>4,879.18</b>
<b>Remaining of the Market</b>				<b>8,805</b>		<b>27%</b>	<b>17.6</b>	<b>0.83</b>	<b>4.41%</b>		<b>4.7%</b>		<b>16,386.30</b>	<b>1,005.83</b>

**Boursa Kuwait Daily Bulletin**

Sunday, September 22, 2019

Company	Reuters Ticker	Valuation Multiples				Price (KWD)		MKT Cap (KWD Mn.)	52 Weeks High (KWD)	52 Weeks Low (KWD)	YTD-19 Return #	Daily Trading Data		YTD-19	
		Trailing P/E (X)	Trailing P/BV (X)	Dividend Yield	Beta	Closing	DTD Change					Volume (Shrs.)	Value (KWD)	Capital Turnover	ROE
▲ Senergy Holding Co.	SENE.KW	NM	0.27	0.00%	<b>1.38</b>	<b>0.020</b>	0.001	<b>3.9</b>	0.034	0.017	(36.7%)	5	0	7.1%	NM
= Independent Petroleum Group	IPGK.KW	12.4	0.87	5.29%	<b>0.35</b>	<b>0.435</b>	0.000	<b>82.0</b>	0.490	0.379	8.5%	0	0	3.0%	7.0%
▲ National Petroleum Services Co.	NAPS.KW	8.8	3.13	6.17%	<b>0.20</b>	<b>1.100</b>	0.050	<b>110.0</b>	1.170	0.818	19.6%	18,147	18,840	0.7%	35.5%
▼ The Energy House Co.	ENER.KW	NM	0.55	0.00%	<b>0.84</b>	<b>0.019</b>	(0.002)	<b>14.3</b>	0.051	0.018	(47.7%)	208,040	3,955	2.9%	NM
▲ Gulf Petroleum Investment	GPIK.KW	NM	0.24	0.00%	<b>1.23</b>	<b>0.022</b>	0.000	<b>10.0</b>	0.033	0.019	(25.4%)	5,837,185	131,163	123.7%	NM
= Burgan Co. for Drilling, Tdg. & Maint. *	ABAR.KW	10.1	0.35	0.00%	<b>NA</b>	<b>0.094</b>	0.000	<b>22.6</b>	0.123	0.085	(1.6%)	0	0	0.5%	3.5%
<b>Oil &amp; Gas</b>		<b>17.0</b>	<b>0.88</b>	<b>4.58%</b>				<b>242.8</b>			<b>6.7%</b>	<b>6,063,377</b>	<b>153,958</b>		<b>5.2%</b>
▼ Kuwait Foundry Co.	KFDC.KW	39.4	0.70	4.02%	<b>0.41</b>	<b>0.423</b>	(0.036)	<b>30.6</b>	0.508	0.175	4.1%	500	212	32.4%	1.8%
▼ Boubyan Petrochemicals Co.*	BPCC.KW	38.0	1.41	6.48%	<b>0.71</b>	<b>0.750</b>	(0.023)	<b>401.1</b>	1.070	0.905	(23.1%)	4,999,477	3,756,104	12.3%	3.7%
= Al Kout for Industrial Projects Co.	ALKK.KW	13.5	2.72	5.95%	<b>0.05</b>	<b>0.840</b>	0.000	<b>84.8</b>	0.840	0.305	0.0%	0	0	0.0%	20.2%
▲ Qurain Petrochemical Industries Co. *	ALQK.KW	9.9	0.81	4.84%	<b>0.67</b>	<b>0.313</b>	0.003	<b>344.0</b>	0.415	0.329	(13.1%)	417,189	130,219	7.5%	8.2%
<b>Basic Materials</b>		<b>16.4</b>	<b>1.10</b>	<b>5.69%</b>				<b>860.5</b>			<b>(16.6%)</b>	<b>5,417,166</b>	<b>3,886,534</b>		<b>6.7%</b>
▲ Specialities Group Holding Co.	SPEC.KW	6.6	0.38	0.00%	<b>0.35</b>	<b>0.072</b>	0.001	<b>10.8</b>	0.082	0.060	5.4%	10,051	718	27.7%	5.7%
▼ Kuwait Cement Co.	KCEM.KW	33.7	0.94	5.59%	<b>0.42</b>	<b>0.261</b>	(0.005)	<b>191.4</b>	0.380	0.327	(31.1%)	50,253	13,120	0.4%	2.8%
▲ Gulf Cable & Electrical Ind. Co.	CABL.KW	14.1	0.53	6.38%	<b>1.05</b>	<b>0.423</b>	0.017	<b>88.8</b>	0.490	0.346	20.5%	178,507	74,523	24.4%	3.8%
▲ Heavy Eng'g Ind. & Shipbuilding Co.	SHIP.KW	6.9	1.27	7.56%	<b>0.47</b>	<b>0.397</b>	0.003	<b>71.6</b>	0.513	0.370	(8.1%)	207,194	82,235	45.1%	18.3%
▲ Kuwait Portland Cement Co.	PCEM.KW	11.5	1.75	8.33%	<b>0.49</b>	<b>1.200</b>	0.030	<b>120.3</b>	1.459	0.149	5.4%	1,002	1,158	7.8%	15.3%
= Shuaiba Industrial Co.	PAPE.KW	23.6	0.91	6.16%	<b>0.18</b>	<b>0.160</b>	0.000	<b>16.1</b>	0.217	1.20%	(14.9%)	0	0	0.2%	3.8%
▼ Metal & Recycling Co.	MRCK.KW	NM	0.20	0.00%	<b>NA</b>	<b>0.024</b>	(0.036)	<b>2.4</b>	0.089	1.20%	(61.9%)	1,000	24	0.4%	NM
▲ ACICO Industries Co.	ACIC.KW	NM	0.44	3.63%	<b>0.40</b>	<b>0.137</b>	0.007	<b>43.5</b>	0.211	0.150	(18.0%)	300	41	7.8%	NM
= Hilal Cement Co.	HCKK.KW	19.1	0.69	16.67%	<b>0.17</b>	<b>0.090</b>	0.000	<b>9.1</b>	0.146	0.067	(19.6%)	0	0	1.0%	3.6%
▲ National Industries Co.	NIBM.KW	17.2	0.76	5.60%	<b>0.19</b>	<b>0.172</b>	0.007	<b>62.0</b>	0.202	0.165	(14.0%)	20,000	3,440	0.9%	4.4%
▲ Equipment Holding Co.	EQUI.KW	NM	0.42	0.00%	<b>1.33</b>	<b>0.019</b>	0.001	<b>2.6</b>	0.032	0.025	(30.7%)	149,686	2,809	27.6%	NM
= National Co. for Consumer Industries	NCCI.KW	NM	0.61	0.00%	<b>NA</b>	<b>0.055</b>	0.000	<b>5.0</b>	0.065	0.065	25.0%	0	0	0.4%	0.3%
▲ Salbookh Trading Co.	SALB.KW	NM	0.51	0.00%	<b>0.79</b>	<b>0.041</b>	0.003	<b>4.3</b>	0.052	0.036	3.3%	645,149	26,041	55.2%	NM
▲ Agility (PWC Logistics)	AGLT.KW	15.4	1.26	1.67%	<b>1.48</b>	<b>0.735</b>	0.023	<b>1,295.8</b>	0.943	0.305	5.4%	2,181,654	1,575,254	14.9%	8.2%
= Educational Holding Group*	EDUK.KW	11.8	1.91	4.76%	<b>0.15</b>	<b>0.315</b>	0.000	<b>77.3</b>	0.338	0.054	1.6%	0	0	0.7%	16.2%
= National Cleaning Co.	CLEA.KW	8.4	0.40	8.51%	<b>0.91</b>	<b>0.057</b>	0.000	<b>14.2</b>	0.072	0.053	(0.7%)	0	0	6.4%	4.8%
▲ Kuwait & Gulf Link Transport Co.	KGLK.KW	11.9	0.31	6.39%	<b>0.90</b>	<b>0.075</b>	0.002	<b>20.7</b>	0.107	0.090	(22.2%)	27,010	1,973	16.2%	2.6%
= Kuwait Co. For Process Plant Const. & Cont.	KPCP.KW	5.2	0.87	9.12%	<b>0.32</b>	<b>0.212</b>	0.000	<b>21.3</b>	0.259	0.220	(7.8%)	0	0	2.9%	16.7%
▼ Humansoft Holding Co.	HUMN.KW	11.0	6.10	5.99%	<b>0.42</b>	<b>3.075</b>	(0.112)	<b>375.9</b>	3.500	2.996	(6.2%)	177,708	548,167	21.5%	55.5%
= Gulf Franchising Co.	GFCI.KW	NM	1.92	0.00%	<b>NA</b>	<b>0.160</b>	0.000	<b>6.4</b>	0.249	0.009	128.6%	0	0	0.0%	NM
= National Shooting Co.	SHOOTING.KW	NM	0.15	0.00%	<b>1.72</b>	<b>0.010</b>	0.000	<b>2.9</b>	0.018	0.015	(35.6%)	100,394	984	17.4%	NM
▲ Combined Group Contracting Co.	CGCK.KW	6.5	0.78	8.94%	<b>0.09</b>	<b>0.223</b>	0.006	<b>36.4</b>	0.392	0.295	(30.3%)	928,958	206,214	97.0%	12.0%
= United Projects Group	UPAC.KW	8.2	1.02	3.68%	<b>0.04</b>	<b>0.440</b>	0.000	<b>72.4</b>	0.660	0.217	(30.7%)	0	0	0.6%	12.5%
▲ ALAFCO Aviation Lease & Finance Co.*	ALAF.KW	14.7	0.80	3.79%	<b>0.41</b>	<b>0.264</b>	0.006	<b>251.4</b>	0.372	0.054	(24.4%)	73,606	19,342	13.1%	5.4%
▲ Mubarrad Holding Co.	MBRD.KW	5.4	0.47	8.55%	<b>0.85</b>	<b>0.058</b>	0.003	<b>9.4</b>	0.080	0.037	(11.5%)	876,703	49,970	41.9%	8.6%
▲ KGL Logistics Co.	LOGK.KW	5.6	0.28	0.00%	<b>0.79</b>	<b>0.039</b>	0.001	<b>28.7</b>	0.045	0.040	(3.5%)	1,858,808	71,943	45.5%	5.1%
▲ Integrated holding Co.	INTEGRATED.KW	7.5	1.32	10.34%	<b>0.44</b>	<b>0.387</b>	0.004	<b>85.1</b>	0.890	0.720	(53.9%)	248,820	96,355	20.3%	17.4%
= Sharjah Cement Co.	SCEM.KW	30.5	0.33	12.50%	<b>0.42</b>	<b>0.064</b>	0.000	<b>38.9</b>	0.087	0.052	(26.4%)	11,010	644	0.8%	1.1%
= Gulf Cement Co.	GCEM.KW	NM	0.61	12.92%	<b>0.38</b>	<b>0.062</b>	0.000	<b>50.8</b>	0.079	0.058	(8.8%)	0	0	1.2%	NM
= Umm Al-Qaiwain General Investments Co.	QIC.KW	15.3	0.46	9.74%	<b>0.24</b>	<b>0.072</b>	0.000	<b>26.1</b>	0.091	0.044	8.1%	0	0	0.7%	3.0%
▲ Fujairah Cement Industries Co.	FCEM.KW	22.5	0.21	12.12%	<b>0.57</b>	<b>0.050</b>	0.003	<b>17.6</b>	0.065	0.053	(22.0%)	100	5	7.2%	0.9%
▼ Ras-Al-Khaimah for White Cement Co.	RKWC.KW	30.4	0.50	8.08%	<b>0.20</b>	<b>0.062</b>	(0.003)	<b>31.0</b>	0.085	0.059	(17.4%)	76,536	4,611	0.6%	1.7%
<b>Industrials</b>		<b>14.2</b>	<b>1.01</b>	<b>4.38%</b>				<b>3,089.9</b>			<b>(9.2%)</b>	<b>7,824,449</b>	<b>2,779,574</b>		<b>7.1%</b>

**Boursa Kuwait Daily Bulletin**

Sunday, September 22, 2019

Company	Reuters Ticker	Valuation Multiples				Price (KWD)		MKT Cap (KWD Mn.)	52 Weeks High (KWD)	52 Weeks Low (KWD)	YTD-19 Return #	Daily Trading Data		YTD-19	
		Trailing P/E (X)	Trailing P/BV (X)	Dividend Yield	Beta	Closing	DTD Change					Volume (Shrs.)	Value (KWD)	Capital Turnover	ROE
= Palms Agro Production Co.	PAPK.KW	NM	0.46	16.92%	0.27	0.059	0.000	3.1	0.076	0.047	(1.7%)	0	0	0.8%	NM
▼ Livestock Transport & Trading Co.	CATT.KW	NM	0.98	2.65%	0.38	0.182	(0.007)	39.4	0.202	0.023	(3.2%)	5,050	919	1.9%	NM
= Danah Alsafat Foodstuff Co.	DANK.KW	NM	0.32	0.00%	0.56	0.024	0.000	3.0	0.043	0.036	(36.2%)	359,656	8,643	81.5%	NM
▼ Mezzan Holding Co.	MEZZ.KW	22.0	1.65	2.73%	0.51	0.575	(0.008)	179.0	0.677	0.431	15.0%	367,813	207,120	11.6%	7.5%
<b>Consumer Goods</b>		<b>60.3</b>	<b>1.36</b>	<b>2.88%</b>				<b>224.5</b>			<b>10.0%</b>	<b>732,519</b>	<b>216,682</b>		<b>2.3%</b>
= Advanced Technology Co.	ATCK.KW	29.8	2.34	1.67%	NA	0.900	0.000	135.0	1.000	0.067	(10.0%)	0	0	0.0%	7.9%
= Yiacco Medical Co.	YIAC.KW	NM	12.28	0.00%	0.57	0.067	0.000	12.1	0.130	0.080	(37.9%)	0	0	0.0%	NM
= Al-Maidan Clinic For Oral Health Services Co.	MIDAN.KW	48.1	8.91	0.40%	0.00	1.240	0.000	310.0	1.260	1.080	3.3%	0	0	0.2%	18.5%
<b>Health Care</b>		<b>NM</b>	<b>4.89</b>	<b>0.77%</b>				<b>457.1</b>			<b>(2.6%)</b>	<b>0</b>	<b>0</b>		<b>3.7%</b>
= Kuwait National Cinema Co.	KCIN.KW	10.0	1.04	5.98%	0.17	0.770	0.000	77.8	1.090	0.830	(28.0%)	0	0	0.4%	10.4%
= Kuwait Hotels Co.	KHOT.KW	NM	1.17	0.00%	NA	0.100	0.000	5.8	0.130	0.040	(23.1%)	0	0	0.0%	NM
▼ Sultan Center Food Products Co.	SCFK.KW	NM	0.55	0.00%	0.66	0.042	(0.000)	24.3	0.062	0.013	(20.5%)	59,350	2,477	11.1%	NM
= Kuwait Cable Vision Co.	KWTV.KW	NM	0.83	0.00%	0.37	0.023	0.000	0.9	0.033	0.008	15.0%	0	0	2.4%	NM
▼ IFA Hotels & Resorts Co.*	IFAH.KW	NM	0.79	0.00%	0.13	0.047	(0.001)	29.9	0.098	0.054	(47.2%)	28,131	1,234	0.6%	NM
▼ Oula Fuel Marketing Co.	OULA.KW	12.2	0.67	4.25%	0.44	0.116	(0.001)	46.9	0.132	0.050	(1.7%)	83,708	9,822	4.5%	5.5%
▲ Kuwait Resorts Co.	MUNK.KW	8.4	0.40	8.93%	0.70	0.056	0.001	11.0	0.067	0.054	(0.5%)	40,010	2,241	47.5%	4.7%
= Jazeera Airways Co.	JAZK.KW	16.9	6.19	3.62%	0.28	0.968	0.000	193.6	0.990	0.114	32.6%	0	0	10.0%	36.6%
▼ Soor Fuel Marketing Co.	SOOR.KW	13.8	0.72	4.27%	0.38	0.116	(0.001)	46.9	0.129	0.110	0.9%	86,647	10,054	4.0%	5.3%
= Future Kid Entertainment and R.E Co.	KIDK.KW	12.9	0.51	13.74%	NA	0.086	0.000	10.0	0.135	0.088	(9.4%)	0	0	3.0%	4.0%
▲ Al Rai Media Group Co.	ALRA.KW	NM	0.66	NM	0.48	0.040	0.002	9.2	0.089	0.041	(35.2%)	8	0	4.8%	NM
= Jiyad Holding Co	JIYAD.KW	10.3	0.40	0.00%	0.67	0.044	0.000	15.3	0.092	0.064	(38.9%)	0	0	43.1%	3.9%
▲ Al Eid Food Co.	ALEID.KW	3.8	0.31	0.00%	0.05	0.053	0.001	5.3	0.081	0.060	(19.8%)	211,000	10,633	2.9%	8.2%
<b>Consumer Services</b>		<b>NM</b>	<b>1.07</b>	<b>4.95%</b>				<b>476.9</b>			<b>(6.8%)</b>	<b>508,854</b>	<b>36,462</b>		<b>NM</b>
▲ Zain	ZAIN.KW	11.4	1.94	5.49%	1.63	0.546	0.012	2,362.6	0.603	0.435	21.6%	3,708,228	2,007,300	17.8%	17.0%
▼ National Mobile Telecom Co.	OORE.KW	10.4	0.65	6.95%	0.52	0.715	(0.001)	360.4	0.785	0.010	0.1%	13,813	9,887	2.0%	6.2%
▲ AAN digital services Co.	AAN.KW	19.0	0.50	0.00%	1.62	0.017	0.001	14.8	0.021	0.016	(2.3%)	723,480	12,226	46.0%	2.6%
▼ Kuwait Telecommunication Co.	VIVA.KW	8.0	1.94	5.37%	0.69	0.745	(0.027)	372.1	0.899	0.707	(6.9%)	16,900	12,781	1.7%	24.3%
<b>Telecommunications</b>		<b>10.7</b>	<b>1.56</b>	<b>5.62%</b>				<b>3,109.8</b>			<b>14.4%</b>	<b>4,462,421</b>	<b>2,042,195</b>		<b>14.5%</b>
▲ National Bank of Kuwait	NBKK.KW	15.7	1.94	3.47%	1.32	0.946	0.016	6,171.7	1.024	0.270	19.1%	6,468,033	6,080,812	13.5%	12.4%
▲ Gulf Bank	GBKK.KW	15.9	1.37	3.38%	0.92	0.281	0.006	856.5	0.330	0.246	11.5%	17,384,600	4,874,420	66.6%	8.6%
= Commercial Bank of Kuwait	CBKK.KW	14.8	1.36	3.61%	0.68	0.500	0.000	996.0	0.700	0.295	10.0%	981,452	490,736	2.3%	9.2%
▲ Ahli Bank of Kuwait	ABKK.KW	10.8	0.83	4.57%	0.62	0.304	0.008	492.2	0.350	0.285	3.1%	1,038,883	310,118	1.5%	7.7%
▲ Ahli United Bank - Kuwait	BKME.KW	12.3	1.51	4.07%	0.78	0.316	0.012	651.8	0.369	0.248	11.7%	620,623	194,130	5.7%	12.3%
▲ Kuwait International Bank	KIBK.KW	16.0	1.08	3.47%	1.00	0.274	0.015	295.6	0.343	0.228	7.9%	4,680,870	1,254,090	66.7%	6.8%
▲ Burgan Bank	BURG.KW	10.8	1.11	3.60%	0.98	0.317	0.012	832.1	0.405	0.249	19.7%	3,703,310	1,156,898	21.3%	10.3%
▲ Kuwait Finance House	KFH.KW	19.6	2.49	2.67%	1.59	0.673	0.036	4,695.2	0.800	0.500	21.2%	25,161,309	16,459,062	19.7%	12.7%
▲ Boubyan Bank	BOUK.KW	26.7	2.88	1.21%	0.92	0.549	0.010	1,583.4	0.630	0.215	18.4%	795,703	430,974	6.5%	10.8%
▲ Warba Bank	WARB.KW	26.4	1.80	0.00%	0.92	0.247	0.003	370.5	0.265	0.205	17.6%	2,686,639	660,332	42.4%	6.8%
▲ Ahli United Bank - Bahrain	AUBK.KW	10.9	2.02	4.27%	0.82	0.272	0.012	2,386.6	0.299	0.019	48.1%	21,650,179	5,802,845	27.9%	18.5%
= Ithmaar Bank	ITHMR.KW	NM	2.38	0.00%	1.41	0.022	0.000	67.6	0.031	0.024	(10.8%)	0	0	4.9%	NM
<b>Banks</b>		<b>15.7</b>	<b>1.86</b>	<b>3.17%</b>				<b>19,399.3</b>			<b>20.5%</b>	<b>85,171,601</b>	<b>37,714,418</b>		<b>11.8%</b>

**Boursa Kuwait Daily Bulletin**

Sunday, September 22, 2019

Company	Reuters Ticker	Valuation Multiples				Price (KWD)		MKT Cap (KWD Mn.)	52 Weeks High (KWD)	52 Weeks Low (KWD)	YTD-19 Return #	Daily Trading Data		YTD-19	
		Trailing P/E (X)	Trailing P/BV (X)	Dividend Yield	Beta	Closing	DTD Change					Volume (Shrs.)	Value (KWD)	Capital Turnover	ROE
▼ Kuwait Insurance Co.	KINS.KW	6.0	0.65	7.21%	0.03	0.330	(0.003)	64.0	0.427	0.305	(8.3%)	72,507	23,928	2.4%	10.9%
= Gulf Insurance Group	GINS.KW	9.5	1.40	5.07%	0.04	0.680	0.000	127.2	0.730	0.401	3.8%	0	0	4.5%	14.8%
= Ahleiah Insurance Co.	AINS.KW	8.5	0.82	8.17%	0.19	0.421	0.000	84.2	0.450	0.056	(1.4%)	0	0	1.9%	9.6%
▲ Warba Insurance Co.	WINS.KW	7.7	0.30	0.00%	0.55	0.065	0.000	11.3	0.085	0.061	(1.2%)	8,000	521	2.3%	3.9%
= Kuwait Reinsurance Co.	KWRE.KW	6.9	0.58	2.97%	0.01	0.158	0.000	29.8	0.198	0.036	(14.1%)	0	0	0.3%	8.4%
= First Takaful Insurance Co.	FTIK.KW	5.1	0.45	0.00%	0.12	0.043	0.000	4.5	0.053	0.027	(3.6%)	0	0	1.7%	8.8%
= Wethaq Takaful Insurance Co.	WETH.KW	66.4	0.26	0.00%	0.68	0.027	0.000	3.0	0.045	0.024	(3.2%)	0	0	15.3%	0.4%
= Bahrain Kuwait Insurance Co.	BKIK.KW	10.0	0.99	12.50%	0.04	0.200	0.000	28.6	N/A	N/A	0.0%	0	0	0.0%	9.9%
<b>Insurance</b>		<b>8.1</b>	<b>0.82</b>	<b>6.35%</b>				<b>352.6</b>			<b>(2.1%)</b>	<b>80,507</b>	<b>24,449</b>		<b>10.1%</b>
▲ Sokouk Holding Co.	SHCK.KW	NM	0.40	0.00%	1.39	0.033	0.002	19.5	0.048	0.038	(16.7%)	113,940	3,619	33.6%	NM
▲ Kuwait Real Estate Co.	KREK.KW	9.1	0.57	0.00%	1.30	0.080	0.000	75.8	0.090	0.044	54.2%	1,705,330	138,618	63.3%	6.2%
▼ United Real Estate Co.	UREK.KW	NM	0.38	0.00%	0.64	0.062	(0.000)	73.7	0.066	0.057	3.3%	38,720	2,289	2.3%	NM
▲ National Real Estate Co.	NREK.KW	10.9	0.43	0.00%	1.33	0.082	0.002	111.2	0.105	0.080	(10.2%)	145,756	11,907	12.9%	3.9%
▲ Salhia Real Estate Co.	SREK.KW	10.6	1.16	5.75%	0.31	0.335	0.003	171.8	0.350	0.324	1.5%	3,463	1,130	3.9%	10.9%
= Tamdeen Real Estate Co.	TAMK.KW	17.5	0.74	3.24%	0.25	0.300	0.000	129.6	0.400	0.123	(14.3%)	0	0	0.5%	4.2%
= Ajial Real Estate Entertainment Co.	AREC.KW	12.9	0.19	3.83%	0.34	0.130	0.000	24.1	0.152	0.031	(3.7%)	99,730	12,965	3.1%	1.5%
▼ Al Massaleh Real Estate Co.	MREC.KW	NM	0.39	0.00%	0.40	0.037	(0.001)	8.7	0.049	0.023	0.8%	40	1	3.6%	NM
= Arab Real Estate Co.	ARAB.KW	NM	0.23	0.00%	1.32	0.026	0.000	13.0	0.035	0.027	(11.5%)	258,319	6,449	26.9%	NM
▲ AL-Enma'a Real Estate Co.*	ENMA.KW	NM	0.46	0.00%	0.77	0.046	0.001	20.7	0.050	0.030	40.7%	120,500	5,521	61.2%	NM
▲ Mabaneer Co.	MABK.KW	14.1	1.77	1.50%	1.04	0.754	0.024	786.1	0.800	0.074	31.9%	497,362	368,750	11.5%	12.5%
= Injazat Real Estate Development Co.	INJA.KW	6.7	0.46	8.52%	0.49	0.080	0.000	27.7	0.090	0.008	(7.0%)	0	0	2.5%	6.9%
= Investors Holding Group Co.	INVK.KW	NM	0.23	0.00%	1.56	0.009	0.000	5.6	0.014	0.012	(26.2%)	2,703,048	24,299	130.2%	NM
= International Resorts Co.	IRCK.KW	2.4	0.20	0.00%	1.35	0.013	0.000	2.0	0.030	0.018	(42.4%)	0	0	3.5%	8.3%
= The Commercial Real Estate Co.	TIJK.KW	12.4	0.57	5.43%	0.76	0.093	0.000	163.0	0.102	0.030	1.1%	12,284	1,093	7.8%	4.6%
= Sanam Real Estate Co.	SANK.KW	NM	0.47	0.00%	0.43	0.038	0.000	4.6	0.050	0.028	8.1%	0	0	3.4%	NM
▲ A'ayan Real Estate Co.	AYRE.KW	3.9	0.38	7.70%	0.86	0.064	0.001	26.6	0.068	0.055	11.1%	221,804	14,132	16.9%	9.7%
▼ Aqar Real Estate Investment Co.	AQAR.KW	13.4	0.55	6.96%	NA	0.065	(0.005)	15.2	0.082	0.023	6.2%	14,989	975	2.9%	4.1%
= Kuwait Real Estate Holding Co.	ALAQ.KW	50.9	0.46	0.00%	0.99	0.027	0.000	5.2	0.032	0.020	8.0%	0	0	3.5%	0.9%
▲ MAZAYA Holding Co.	MAZA.KW	11.1	0.41	14.86%	1.35	0.054	0.002	37.0	0.081	0.070	(23.4%)	430,652	22,860	49.9%	3.6%
▲ Tijara Real Estate & Investment Co.	TIJA.KW	15.7	0.38	5.00%	0.63	0.040	0.002	14.8	0.056	0.017	(18.4%)	37,045	1,475	2.2%	2.4%
▲ Al TAMEER Real Estate Investment Co.	AMAR.KW	7.0	0.24	0.00%	1.34	0.018	0.000	4.2	0.046	0.026	(37.5%)	75,577	1,310	135.1%	3.5%
= Arkan Al-Kuwait Real Estate Co. *	ARKK.KW	16.2	0.55	10.30%	0.34	0.078	0.000	19.5	0.091	0.072	(6.9%)	0	0	3.1%	3.4%
= Al-Argan International Real Estate Co.	ARGK.KW	67.6	0.42	3.42%	0.38	0.141	0.000	37.4	0.176	0.012	3.7%	0	0	0.1%	0.6%
▲ Abyaar Real Estate Development Co.	ABYR.KW	NM	0.22	0.00%	1.57	0.013	0.000	14.4	0.019	0.015	(14.5%)	2,126,101	27,264	92.1%	NM
= Munshaat Real Estate Projects Co.	MUNS.KW	NM	0.56	0.00%	0.99	0.079	0.000	25.4	0.120	0.026	(21.0%)	0	0	4.3%	NM
= First Dubai For Real Estate Development	FIRST.KW	16.5	0.46	0.00%	1.55	0.034	0.000	33.9	0.043	0.035	(10.1%)	968,800	32,416	8.7%	2.8%
▲ Kuwait Business Town Real Estate Co.	KBTK.KW	8.3	0.38	7.14%	1.27	0.040	0.001	25.1	0.051	0.044	(7.1%)	8,045	310	6.2%	4.5%
= Real Estate Asset Management Co.	REAM.KW	20.9	0.64	4.97%	0.03	0.095	0.000	10.5	0.218	0.033	(44.4%)	0	0	2.5%	3.1%
▲ MENA Real Estate Co. *	MENK.KW	NM	0.26	0.00%	0.94	0.038	0.001	5.2	0.050	0.015	6.7%	2,873,298	107,977	263.3%	NM
▲ Al Mudon International Real Estate Co.	ALMK.KW	NM	0.13	0.00%	1.34	0.017	0.001	1.7	0.032	0.020	(41.3%)	124,300	2,048	29.0%	NM
▲ Real Estate Trade Centers Co.	MARA.KW	NM	0.12	0.00%	0.51	0.025	0.002	3.5	0.037	0.019	12.3%	52,820	1,165	23.0%	NM
▼ Kuwait Remal Real Estate Co.	REMAL.KW	NM	0.32	0.00%	1.00	0.024	(0.000)	7.3	0.050	0.029	(42.9%)	100,110	2,420	47.0%	NM
▲ Mashaer Holding Co.	MASHAER.KW	NM	0.54	0.00%	0.29	0.069	0.001	12.3	0.088	0.015	(18.2%)	50,200	3,394	186.8%	NM
= Effect Real Estate Co.	EFFECT.KW	NM	0.29	0.00%	0.81	0.021	0.000	1.7	0.026	0.009	125.3%	0	0	17.3%	NM
▲ Ajwan Gulf Real Estate Co.	AJWN.KW	NM	0.23	0.00%	0.49	0.013	0.000	2.8	0.024	0.017	(27.5%)	347,290	4,500	119.3%	NM
= Al Masaken Intl. Real Estate Dev. Co.	MASKN.KW	NM	0.89	0.00%	0.32	0.074	0.000	7.4	0.100	0.036	18.4%	0	0	0.2%	NM
= Dalqan Real Estate Co.	DALQ.KW	NM	2.73	0.00%	NA	0.350	0.000	17.5	0.350	0.162	0.0%	0	0	0.0%	2.1%
= Dar Al Thuraya Real Estate Co.	THURY.KW	20.9	1.53	0.00%	NA	0.162	0.000	23.7	0.198	0.000	(26.4%)	0	0	0.0%	7.3%
<b>Real Estate</b>		<b>36.2</b>	<b>0.70</b>	<b>2.66%</b>				<b>1,989.2</b>			<b>6.8%</b>	<b>13,129,523</b>	<b>798,887</b>		<b>1.9%</b>

**Boursa Kuwait Daily Bulletin**

Sunday, September 22, 2019

Company	Reuters Ticker	Valuation Multiples				Price (KWD)		MKT Cap (KWD Mn.)	52 Weeks High (KWD)	52 Weeks Low (KWD)	YTD-19 Return #	Daily Trading Data		YTD-19	
		Trailing P/E (X)	Trailing P/BV (X)	Dividend Yield	Beta	Closing	DTD Change					Volume (Shrs.)	Value (KWD)	Capital Turnover	ROE
▲ Kuwait Investment Co.	KINV.KW	5.2	0.62	7.31%	0.66	0.136	0.006	75.0	0.147	0.117	4.6%	364,862	49,130	20.0%	11.9%
▲ Commercial Facilities Co.	FACI.KW	7.7	0.67	8.09%	0.57	0.199	0.008	106.8	0.211	0.016	13.7%	1	0	3.5%	8.8%
▲ Int'l Financial Advisors Co.	IFIN.KW	NM	0.65	0.00%	1.66	0.052	0.002	14.0	0.054	0.021	86.5%	1,429,671	73,986	96.9%	NM
▲ National Investment Co.	NINV.KW	10.2	0.63	4.90%	1.32	0.130	0.001	113.9	0.145	0.070	57.6%	252,824	32,768	27.5%	6.2%
▲ Kuwait Projects Co.(Holding)	KPRO.KW	14.8	1.72	4.13%	0.75	0.220	0.005	440.0	0.235	0.030	5.8%	1,537,818	334,265	8.9%	11.6%
▼ Coast Invest. & Development Co.	COAS.KW	14.9	0.36	0.00%	1.84	0.031	(0.001)	19.5	0.045	0.028	(6.0%)	175,725	5,544	14.6%	2.4%
▲ The Securities House Co.	SECH.KW	NM	0.48	0.00%	1.26	0.044	0.001	19.8	0.062	0.046	(17.2%)	113,100	4,798	48.9%	0.4%
▲ Arzan Financial Group For Fin. & Invest.	ARZA.KW	3.9	0.21	0.00%	1.14	0.026	0.002	20.9	0.038	0.025	(12.8%)	8,875,965	225,386	126.6%	5.5%
▲ Kuwait Financial Centre	MARKZ.KW	9.9	0.48	5.41%	0.68	0.093	0.006	44.5	0.110	0.032	(7.5%)	956,412	85,731	16.7%	4.8%
▲ Kuwait & M.E. Financial Inv. Co.	KMEF.KW	NM	1.61	0.00%	0.82	0.095	0.013	25.0	0.100	0.026	195.6%	4,384,152	400,370	42.6%	2.0%
▲ Al-Aman Investment Co.	AMAN.KW	8.4	0.48	0.00%	0.78	0.055	0.001	8.2	0.081	0.032	12.9%	27,265	1,500	85.3%	5.8%
▲ First Investment Co.	OLAK.KW	NM	0.24	0.00%	0.94	0.032	0.000	20.9	0.045	0.012	(18.9%)	2,768,359	89,043	117.3%	NM
▲ Al-Mal Investment Co.	MALK.KW	NM	0.48	0.00%	1.61	0.013	0.001	3.9	0.025	0.018	(34.6%)	516,751	6,225	32.3%	NM
▼ Gulf Investment House	GIHK.KW	1.5	0.54	0.00%	1.04	0.048	(0.001)	19.5	0.083	0.014	169.7%	36,040	1,658	10.1%	36.8%
▲ A'ayan Leasing & Investment Co.	AAYA.KW	NM	0.57	0.00%	1.41	0.055	0.002	44.7	0.061	0.031	47.2%	8,280,019	448,989	232.6%	0.1%
▲ Bayan Investment Co.	BAYK.KW	NM	0.44	0.00%	1.57	0.040	0.004	15.7	0.051	0.034	(17.2%)	46,968	1,878	4.5%	NM
= Osoul Investment Co.	OSUL.KW	8.1	0.59	7.93%	0.43	0.070	0.000	13.2	0.074	0.053	15.7%	150,100	10,507	3.8%	7.4%
▲ Kuwait Finance & Investment Co.	KFSK.KW	NM	0.38	0.00%	0.55	0.047	0.005	15.0	0.051	0.033	36.8%	2,539,766	114,818	47.1%	0.4%
= KAMCO Investment Co.	KAMC.KW	7.3	0.69	0.00%	0.13	0.090	0.000	23.7	0.106	0.063	30.4%	0	0	2.1%	9.4%
▼ National International Holding Co.	NIHK.KW	5.9	0.33	7.57%	0.98	0.061	(0.000)	13.2	0.081	0.040	(1.6%)	57,826	3,530	8.3%	5.6%
▼ UniCap Investment and Finance	UNICAP.KW	NM	0.45	6.76%	0.65	0.044	(0.001)	10.5	0.085	0.058	(44.3%)	313,406	13,889	21.6%	NM
▼ Al Madar Finance & Investment Co.	MADR.KW	7.5	1.07	0.00%	0.45	0.108	(0.001)	23.1	0.180	0.010	(35.3%)	572,101	62,281	60.4%	14.2%
▲ Al-Deera Holding	DEER.KW	2.2	0.47	0.00%	1.49	0.012	0.000	2.4	0.026	0.016	(35.1%)	398,678	4,474	11.2%	20.9%
▲ Al Salam Group Holding Co.	SAGH.KW	NM	0.27	0.00%	1.59	0.032	0.002	8.5	0.043	0.013	(1.9%)	3,912,358	122,867	173.2%	NM
▲ Ekttitab Holding Co.	EKTT.KW	NM	0.37	0.00%	1.28	0.017	0.001	5.3	0.024	0.019	(20.1%)	7,362	117	16.0%	NM
▼ Al Madina For Finance & Investment Co.	MADI.KW	NM	0.48	0.00%	1.24	0.016	(0.000)	6.4	0.027	0.020	(22.9%)	477,554	7,678	115.1%	NM
▲ NOOR Financial Investment Co.	NOOR.KW	1.6	0.65	5.94%	0.75	0.084	0.001	34.7	0.100	0.050	9.2%	322,605	27,031	51.3%	41.7%
= Tamdeen Investment Co.	TAMI.KW	11.8	0.46	3.64%	0.12	0.328	0.000	113.2	0.349	0.232	17.1%	0	0	0.8%	3.9%
= Kuwait Bahrain Int'l Exchange Co.	EXCH.KW	10.9	0.60	0.00%	NA	0.086	0.000	4.0	N/A	N/A	0.0%	0	0	0.0%	5.5%
▼ Kuwait Syrian Holding Co.	KSHC.KW	NM	0.30	9.38%	1.45	0.032	(0.002)	5.6	0.082	0.033	(20.0%)	355,452	10,991	54.1%	NM
▲ Asiya Capital Investment Co.	ASIYA.KW	NM	0.43	0.00%	0.86	0.038	0.002	30.7	0.039	0.030	12.9%	24,259	864	4.6%	0.3%
▲ Gulf North Africa Holding Co.	GNAH.KW	NM	0.78	0.00%	1.56	0.059	0.001	8.8	0.063	0.046	20.0%	1,500	86	26.7%	NM
= Amwal International Investment Co.	AMWA.KW	11.7	0.55	0.00%	0.62	0.055	0.000	9.9	0.087	0.056	(11.3%)	0	0	0.2%	4.7%
▲ Alimtiq Investment Group	ALIMK.KW	9.5	0.73	6.04%	0.87	0.127	0.008	144.0	0.147	0.124	(5.2%)	4,119,986	509,828	55.3%	7.6%
= Tamkeen Holding Co.	TAMKE.KW	NM	0.05	0.00%	NA	0.005	0.000	0.3	0.013	0.007	(47.5%)	0	0	12.2%	NM
▲ Manazel Holding Co.	MANK.KW	NM	0.70	0.00%	1.67	0.029	0.001	12.5	0.033	0.024	17.4%	640	19	17.9%	NM
▲ National Industries Group	NIND.KW	8.4	0.87	5.10%	1.35	0.224	0.013	319.8	0.261	0.151	48.9%	14,165,604	3,072,388	85.3%	10.4%
= Warba Capital Holding Co.	WARBACAP.KW	NM	1.16	0.00%	1.13	0.075	0.000	7.5	0.115	0.019	145.1%	928	63	19.2%	NM
= Arabi Holding Group Co.	AGHC.KW	59.1	0.53	0.00%	0.26	0.079	0.000	13.7	0.092	0.060	14.5%	117,500	9,245	5.9%	0.9%
▲ Privatization Holding Co.	KPPC.KW	NM	0.37	9.35%	1.26	0.054	0.004	32.6	0.065	0.013	1.9%	14,673	757	21.5%	NM
= Credit Rating & Collection Co.	TAHS.KW	NM	0.99	0.00%	0.05	0.033	0.000	5.4	0.037	0.019	48.0%	0	0	0.4%	NM
▼ Egypt Kuwait Holding Co.	EKHK.KW	15.8	2.74	4.88%	0.28	0.410	(0.045)	420.0	0.475	0.063	26.2%	20,000	8,341	0.2%	17.3%
▼ GFH Financial Group	GFH.KW	7.1	0.84	5.98%	1.09	0.072	(0.000)	264.0	0.102	0.060	(6.6%)	426,692	31,010	7.5%	11.7%
= Inovent	INOV.KW	7.4	0.45	7.81%	0.94	0.064	0.000	18.3	0.089	0.080	(20.0%)	0	0	8.1%	6.1%
= Al Bareeq Holding	BAREEQ.KW	48.0	1.15	0.00%	0.05	0.108	0.000	47.2	0.110	0.025	8.0%	0	0	0.0%	2.4%
= Amar For Finance and Leasing Co.	AMARF.KW	NM	0.47	0.00%	NA	0.041	0.000	8.1	0.066	0.033	(1.2%)	0	0	1.5%	NM
= Al-Manar Financing & Leasing Co.	ALMANAR.KW	21.6	0.37	0.00%	NA	0.040	0.000	12.3	0.075	0.000	(25.0%)	0	0	9.3%	1.7%
<b>Financial Services</b>		<b>11.8</b>	<b>0.80</b>	<b>4.40%</b>				<b>2,626.4</b>			<b>25.2%</b>	<b>57,764,922</b>	<b>5,772,056</b>		<b>6.8%</b>

**Boursa Kuwait Daily Bulletin**

Sunday, September 22, 2019

Company	Reuters Ticker	Valuation Multiples				Price (KWD)		MKT Cap (KWD Mn.)	52 Weeks High (KWD)	52 Weeks Low (KWD)	YTD-19 Return #	Daily Trading Data		YTD-19 Capital Turnover	ROE
		Trailing P/E (X)	Trailing P/BV (X)	Dividend Yield	Beta	Closing	DTD Change					Volume (Shrs.)	Value (KWD)		
= Automated Systems Co.	ASCK.KW	NM	0.55	5.63%	<b>0.00</b>	<b>0.071</b>	0.000	<b>7.1</b>	0.132	0.066	(34.3%)	0	0	0.7%	NM
= Osos Holding Group Co.	OSOS.KW	6.8	0.80	9.62%	<b>0.42</b>	<b>0.104</b>	0.000	<b>10.4</b>	0.118	0.085	2.0%	0	0	12.6%	11.6%
▼ Hayat Communications Co.	HAYK.KW	7.1	0.30	0.00%	<b>1.44</b>	<b>0.032</b>	(0.028)	<b>3.0</b>	0.100	0.025	(52.9%)	3,830	123	1.3%	4.2%
<b>Technology</b>		<b>11.6</b>	<b>0.57</b>	<b>6.84%</b>				<b>20.5</b>			<b>(25.0%)</b>	<b>3,830</b>	<b>123</b>		<b>4.9%</b>
<b>Boursa Kuwait</b>		<b>15.4</b>	<b>1.38</b>	<b>3.69%</b>				<b>32,849.5</b>			<b>13.2%</b>	<b>181,159,169</b>	<b>53,425,336</b>		<b>8.9%</b>

**Year-to-Date 2019 Top Movers & Most Active Stocks**

YTD Top % Gainers	Close (KWD)	Percent Change
Kuwait & M.E. Financial Inv. Co.	<b>0.095</b>	<b>195.6%</b>
Gulf Investment House	<b>0.048</b>	<b>169.7%</b>
Warba Capital Holding Co.	<b>0.075</b>	<b>145.1%</b>
Int'l Financial Advisors Co.	<b>0.052</b>	<b>86.5%</b>
National Investment Co.	<b>0.130</b>	<b>57.6%</b>

YTD Top % Losers	Close (KWD)	Percent Change
Integrated holding Co.	<b>0.387</b>	<b>(53.9%)</b>
The Energy House Co.	<b>0.019</b>	<b>(47.7%)</b>
IFA Hotels & Resorts Co.	<b>0.047</b>	<b>(47.2%)</b>
Real Estate Asset Management Co.	<b>0.095</b>	<b>(44.4%)</b>
UniCap Investment and Finance	<b>0.044</b>	<b>(44.3%)</b>

YTD Most Active by Volume	Close (KWD)	Volume (Shrs.)
Ahli United Bank - Bahrain	<b>0.272</b>	<b>2,450,568,805</b>
Gulf Bank	<b>0.281</b>	<b>2,031,038,607</b>
A'ayan Leasing & Investment Co.	<b>0.055</b>	<b>1,893,748,678</b>
Kuwait Finance House	<b>0.673</b>	<b>1,373,361,089</b>
National Industries Group	<b>0.224</b>	<b>1,218,445,750</b>

YTD Most Active by Value	Close (KWD)	Value (KWD)
Kuwait Finance House	<b>0.673</b>	<b>944,271,835</b>
National Bank of Kuwait	<b>0.946</b>	<b>823,746,022</b>
Ahli United Bank - Bahrain	<b>0.272</b>	<b>632,935,806</b>
Gulf Bank	<b>0.281</b>	<b>597,031,888</b>
Zain	<b>0.546</b>	<b>397,510,833</b>

\* Different Fiscal Year Company