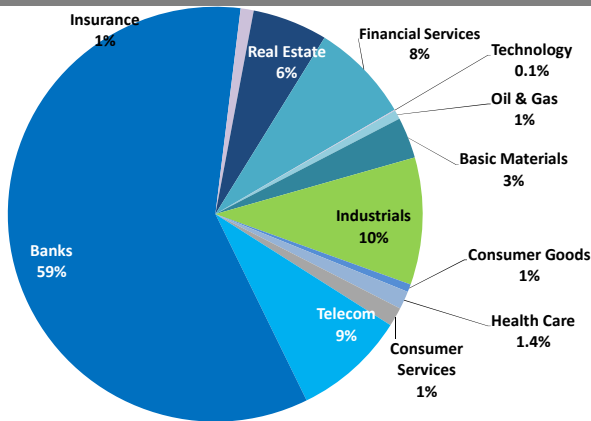


Boursa Kuwait Daily Report

May 9, 2019

Sector Weight by Market Cap



Market Capitalization - Sector Returns

	Market Cap. (KWD Mn)	DTD % Chg	MTD % Chg	YTD % Chg
Boursa Kuwait	33,503.0	(0.9%)	3.5%	15.5%
Oil & Gas	243.8	(0.4%)	4.6%	7.1%
Basic Materials	1,069.6	(0.7%)	2.4%	3.7%
Industrials	3,319.4	(0.6%)	1.7%	(2.5%)
Consumer Goods	204.3	1.9%	(1.9%)	0.1%
Health Care	467.1	(2.1%)	(2.1%)	(0.5%)
Consumer Services	498.3	(1.1%)	(0.4%)	(2.6%)
Telecommunications	2,932.7	(0.2%)	6.3%	7.9%
Banks	19,835.4	(1.1%)	3.2%	23.2%
Insurance	347.6	0.9%	0.7%	(3.5%)
Real Estate	1,955.0	(1.1%)	4.7%	4.9%
Financial Services	2,608.5	(0.2%)	7.1%	24.4%
Technology	21.3	(6.4%)	(4.5%)	(21.9%)

Top 10 Companies by Market Capitalization

Company Name	Market Cap. (Mn KWD)	P/E (X)	ROE* (%)
1- National Bank of Kuwait	6,321.7	17.1	11.7%
2- Kuwait Finance House	4,771.9	21.0	12.0%
3- Ahli United Bank - Bahrain	2,255.0	10.7	17.8%
4- Zain	2,176.5	11.1	15.4%
5- Boubyan Bank	1,701.6	30.3	13.7%
6- Agility (PWC Logistics)	1,389.2	17.1	8.0%
7- Commercial Bank of Kuwait	1,049.8	16.5	8.7%
8- Gulf Bank	954.1	16.8	9.0%
9- Burgan Bank	866.3	10.5	11.0%
10- Mabane Co.	707.9	13.5	12.4%
Total	22,194	15.86	12.2%

*: ROE is calculated based on FY2018 net profit & shareholders' equity as of 31-December-18

Top Movers and Most Active Stocks

Today's Top % Gainers	Close (KWD)	Change (KWD)	Percent Change
United Projects Group	0.418	0.038	10.0%
Livestock Transport & Trading Co.	0.199	0.018	9.9%
Kuwait Reinsurance Co.	0.145	0.013	9.8%
Real Estate Trade Centers Co.	0.030	0.002	7.5%
Gulf Cement Co.	0.060	0.004	6.3%

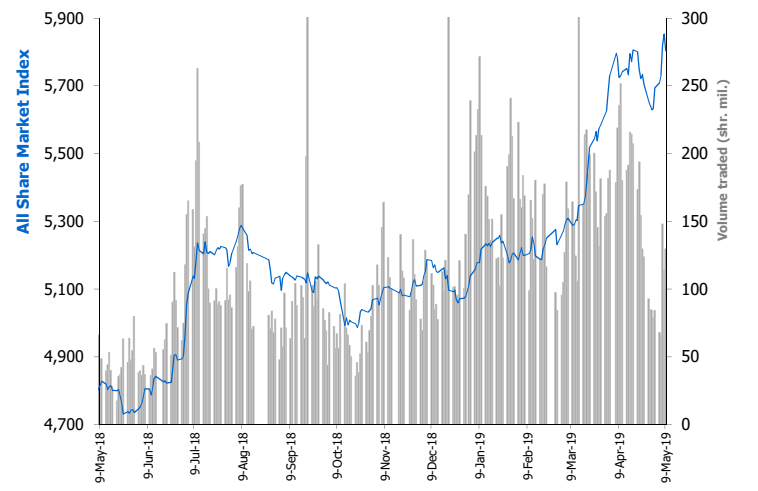
Today's Top % Losers	Close (KWD)	Change (KWD)	Percent Change
Kuwait & M.E. Financial Inv. Co.	0.036	(0.004)	(10.3%)
Al Madina For Finance & Investment Co.	0.018	(0.002)	(10.3%)
Al Eid Food Co.	0.044	(0.004)	(8.7%)
Arabi Holding Group Co.	0.083	(0.006)	(6.8%)
National Real Estate Co.	0.076	(0.005)	(6.7%)

Today's Most Active by Volume	Close (KWD)	Percent Change	Volume (Shares)
National Industries Group	0.239	0.4%	17,394,661
Ahli United Bank - Bahrain	0.257	(0.8%)	11,573,938
Gulf Bank	0.313	(1.6%)	10,205,761
Kuwait Finance House	0.684	(1.3%)	9,079,224
Investors Holding Group Co.	0.011	(0.9%)	8,679,444

Source: Boursa Kuwait, KAMCO Research

Market Breadth	27	82	66
Benchmark Return	Closing Value	DTD Chg	MTD % Chg
Premier Market Index	6,303.15	(62.28)	4.2%
Main Market Index	4,831.20	(24.66)	0.0%
All Share Market Index	5,803.20	(49.91)	3.1%
Market Cap (KWD Mn)	33,503.04	(297.75)	3.5%

Index Performance relative to Volume



Market Trading Data and Volatility

Trading Indicators	Today's Value	DTD Chg	DTD % Chg	Average Daily YTD 2019	Average Daily YTD 2018
Volume (Shrs Mn)	129.7	16.3	14.4%	164.2	80.8
Value Traded (KWD Mn)	31.0	(2.7)	(8.0%)	31.3	12.1
No. of Trades	5,978	342	6.1%	5,790	3,303

Today's Most Active by Value	Close (KWD)	Percent Change	Value (KWD)
Kuwait Finance House	0.684	(1.3%)	6,220,232
National Industries Group	0.239	0.4%	4,147,900
National Bank of Kuwait	0.969	(1.2%)	3,406,673
Gulf Bank	0.313	(1.6%)	3,194,847
Ahli United Bank - Bahrain	0.257	(0.8%)	2,959,746

Boursa Kuwait - Premier Market

Thursday, May 9, 2019

Premier Market Stocks	Closing Price			Market Capitalization			Valuation Multiples				ROE	YTD-19 Price Return	YTD-19 Trading Indicators	
	KWD	DTD Chg. (KWD)	D-T-D Return	KWD Mn	Weight in Premier Index	Weight in Boursa Kuwait	P/E (X)	P/BV (X)	Yield	Beta			Volume (Mn Shrs)	Value (KWD Mn)
▼ National Bank of Kuwait	0.969	(0.012)	(1.2%)	6,322	25.9%	18.9%	17.1	2.00	3.4%	1.34	11.7%	22.0%	491.10	444.77
▼ Gulf Bank	0.313	(0.005)	(1.6%)	954	3.9%	2.8%	16.8	1.52	3.0%	0.93	9.0%	24.2%	1,298.22	373.44
▼ Kuwait International Bank	0.284	(0.001)	(0.4%)	306	1.3%	0.9%	14.7	1.12	3.4%	0.96	7.6%	11.9%	324.72	96.75
= Burgan Bank	0.330	0.000	0.0%	866	3.5%	2.6%	10.5	1.15	3.5%	0.98	11.0%	24.6%	276.26	90.00
▼ Kuwait Finance House	0.684	(0.009)	(1.3%)	4,772	19.5%	14.2%	21.0	2.52	2.6%	1.58	12.0%	23.1%	536.25	349.29
▼ Boubyan Bank	0.590	(0.007)	(1.2%)	1,702	7.0%	5.1%	30.3	4.17	1.1%	0.91	13.7%	27.2%	57.64	33.56
= Kuwait Projects Co. (Holding)	0.224	0.000	0.0%	347	1.4%	1.0%	12.3	1.25	5.2%	0.77	10.2%	7.7%	55.59	11.62
▼ Mabane Co.	0.679	(0.010)	(1.5%)	708	2.9%	2.1%	13.5	1.66	1.7%	1.02	12.4%	18.8%	57.77	36.38
▲ National Industries Group (Holding)	0.239	0.001	0.4%	341	1.4%	1.0%	17.2	0.97	4.8%	1.34	5.6%	58.8%	536.74	107.47
▼ Boubyan Petrochemical Co.	0.970	(0.015)	(1.5%)	519	2.1%	1.5%	NM	1.78	4.5%	0.75	1.9%	(0.5%)	23.23	21.96
= Qurain Petrochemicals Industries Co.	0.389	0.000	0.0%	428	1.7%	1.3%	9.4	0.98	3.9%	0.70	10.4%	8.1%	35.22	13.46
▼ Agility Public Warehousing Co.	0.788	(0.005)	(0.6%)	1,389	5.7%	4.1%	17.1	1.37	1.6%	1.48	8.0%	13.0%	97.12	80.28
▼ Mobile Telecommunications Co.	0.503	(0.001)	(0.2%)	2,177	8.9%	6.5%	11.1	1.70	6.0%	1.66	15.4%	12.0%	314.90	147.76
▼ Human Soft Holding Co.	3.389	(0.101)	(2.9%)	414	1.7%	1.2%	13.2	6.18	5.4%	0.41	47.0%	3.3%	13.74	44.11
▲ GFH Financial Group (B.S.C)	0.075	0.001	1.8%	275	1.1%	0.8%	6.3	0.68	5.7%	1.16	10.8%	(2.6%)	158.78	12.27
▼ Ahli United Bank (B.S.C)	0.257	(0.002)	(0.8%)	2,255	9.2%	6.7%	10.7	1.90	4.5%	0.75	17.8%	39.9%	1,280.14	315.09
▼ Warba Bank	0.246	(0.005)	(2.0%)	369	1.5%	1.1%	29.0	1.90	0.0%	0.89	6.5%	17.1%	295.14	68.54
= Mezzan Holding Co.	0.499	0.000	0.0%	155	0.6%	0.5%	20.2	1.46	3.1%	0.61	7.2%	(0.2%)	29.46	13.59
▼ Integrated Holding Co.	0.650	(0.004)	(0.6%)	143	0.6%	0.4%	8.3	2.06	6.2%	0.23	24.8%	(22.6%)	23.47	17.78
Subtotal- Premier Market Stocks	5,803.20	(49.91)	-0.85%	24,442	100%	73%	15.6	1.85	3.35%		11.9%	14.2%	5,905.49	2,278.11
Remaining of the Market				9,061		27%	17.1	0.86	4.28%		5.0%		8,546.77	473.98

Boursa Kuwait Daily Bulletin

Thursday, May 9, 2019

Company	Reuters Ticker	Valuation Multiples				Price (KWD)		MKT Cap (KWD Mn.)	52 Weeks High (KWD)	52 Weeks Low (KWD)	YTD-19 Return #	Daily Trading Data		YTD-19	
		Trailing P/E (X)	Trailing P/BV (X)	Dividend Yield	Beta	Closing	DTD Change					Volume (Shrs.)	Value (KWD)	Capital Turnover	ROE
▼ Senergy Holding Co.	SENE.KW	NM	0.32	0.00%	1.41	0.024	(0.002)	4.8	0.037	0.021	(22.7%)	349,274	8,204	3.1%	NM
= Independent Petroleum Group	IPGK.KW	12.9	0.83	5.48%	0.32	0.420	0.000	79.1	0.450	0.379	4.7%	0	0	2.0%	6.5%
= National Petroleum Services Co.	NAPS.KW	8.5	2.76	6.79%	0.19	1.000	0.000	100.0	1.170	0.715	8.7%	0	0	0.6%	32.6%
= The Energy House Co.	ENER.KW	NM	1.15	0.00%	0.88	0.036	0.000	27.2	0.051	0.025	(0.3%)	0	0	2.0%	0.3%
▼ Gulf Petroleum Investment	GPIK.KW	NM	0.26	0.00%	1.23	0.024	(0.001)	10.9	0.033	0.022	(18.6%)	6,641,690	161,834	107.1%	NM
= Burgan Co. for Drilling, Tdg. & Maint. *	ABAR.KW	8.0	0.34	0.00%	NA	0.090	0.000	21.8	0.123	0.078	(5.3%)	0	0	0.4%	4.3%
Oil & Gas		13.9	0.88	4.57%				243.8			7.1%	6,990,964	170,038		6.4%
= Kuwait Foundry Co.	KFDC.KW	33.4	0.91	12.00%	0.44	0.250	0.000	38.5	0.289	0.175	30.9%	299,697	74,886	12.5%	2.7%
▼ Boubyan Petrochemicals Co.*	BPCC.KW	NM	1.78	4.51%	0.75	0.970	(0.015)	518.8	1.090	0.780	(0.5%)	164,603	160,438	4.3%	1.9%
= Al Kout for Industrial Projects Co.	ALKK.KW	13.5	2.72	5.95%	0.05	0.840	0.000	84.8	0.840	0.362	0.0%	0	0	0.0%	20.2%
= Qurain Petrochemical Industries Co. *	ALQK.KW	9.4	0.98	3.89%	0.70	0.389	0.000	427.6	0.415	0.321	8.1%	1,765,421	686,742	3.2%	10.4%
Basic Materials		18.4	1.34	4.65%				1,069.6			3.7%	2,229,721	922,066		7.3%
▼ Specialities Group Holding Co.	SPEC.KW	7.1	0.38	0.00%	0.36	0.071	(0.001)	10.7	0.082	0.054	4.0%	240,765	17,074	11.5%	5.4%
▲ Kuwait Cement Co.	KCEM.KW	28.6	1.18	4.71%	0.47	0.310	0.010	227.3	0.450	0.327	(18.2%)	2,181	650	0.3%	4.1%
▼ Gulf Cable & Electrical Ind. Co.	CABL.KW	9.2	0.51	7.30%	1.03	0.370	(0.013)	77.7	0.420	0.346	5.4%	498,363	185,847	5.8%	5.5%
▲ Heavy Eng'g Ind. & Shipbuilding Co.	SHIP.KW	7.5	1.29	4.98%	0.48	0.402	0.005	72.5	0.538	0.307	(6.9%)	843,968	338,196	15.1%	17.2%
▼ Kuwait Portland Cement Co.	PCEM.KW	11.9	1.79	8.18%	0.54	1.223	(0.077)	122.6	1.459	0.149	7.5%	23,450	28,781	5.7%	15.1%
= Shuaiba Industrial Co.	PAPE.KW	15.1	0.82	11.17%	0.17	0.150	0.000	15.1	0.249	0.012	(20.2%)	0	0	0.2%	5.4%
▲ Metal & Recycling Co.	MRCK.KW	NM	0.25	0.00%	0.65	0.033	0.003	3.3	0.075	0.012	(47.6%)	10,070	331	0.1%	NM
= ACICO Industries Co.	ACIC.KW	19.6	0.45	3.56%	0.43	0.140	0.000	44.5	0.245	0.150	(16.2%)	111,010	14,910	3.5%	2.3%
= Hilal Cement Co.	HCKK.KW	NM	0.92	0.00%	0.15	0.125	0.000	12.7	0.139	0.067	11.6%	0	0	0.7%	NM
= National Industries Co.	NIBM.KW	17.2	0.82	5.07%	0.18	0.190	0.000	68.4	0.202	0.160	(5.0%)	0	0	0.3%	4.7%
▼ Equipment Holding Co.	EQUI.KW	NM	0.55	0.00%	1.39	0.027	(0.000)	3.6	0.034	0.025	(1.9%)	108,700	2,769	18.6%	NM
= National Co. for Consumer Industries	NCCI.KW	NM	0.33	0.00%	NA	0.030	0.000	2.7	0.084	0.035	(31.8%)	0	0	0.4%	0.3%
▼ Salbookh Trading Co.	SALB.KW	NM	0.55	0.00%	0.78	0.048	(0.001)	5.0	0.052	0.036	20.3%	100,080	4,720	28.9%	NM
▼ Agility (PWC Logistics)	AGLT.KW	17.1	1.37	1.56%	1.48	0.788	(0.005)	1,389.2	0.943	0.315	13.0%	707,551	556,978	5.5%	8.0%
= Educational Holding Group*	EDUK.KW	NM	1.99	4.75%	0.17	0.316	0.000	77.5	0.340	0.057	1.9%	0	0	0.5%	0.4%
▲ National Cleaning Co.	CLEA.KW	10.9	0.44	0.00%	0.95	0.064	0.002	16.0	0.072	0.047	11.5%	32,465	2,056	5.0%	4.0%
▲ Kuwait & Gulf Link Transport Co.	KGLK.KW	6.6	0.35	5.77%	0.96	0.082	0.002	22.9	0.128	0.090	(13.9%)	320	26	12.8%	5.3%
▼ Kuwait Co. For Process Plant Const. & Cont.	KPCP.KW	5.4	0.96	4.20%	0.34	0.230	(0.007)	23.1	0.260	0.159	0.0%	3,193	734	1.6%	17.7%
▼ Humansoft Holding Co.	HUMN.KW	13.2	6.18	5.43%	0.41	3.389	(0.101)	414.3	3.800	2.996	3.3%	127,527	431,552	11.2%	47.0%
= Gulf Franchising Co.	GFCI.KW	NM	0.68	0.00%	NA	0.059	0.000	2.4	0.250	0.013	(15.7%)	0	0	0.0%	NM
▼ National Shooting Co.	SHOOTING.KW	NM	0.20	0.00%	1.79	0.014	(0.000)	4.0	0.021	0.015	(11.3%)	5,001	66	10.2%	NM
▲ Combined Group Contracting Co.	CGCK.KW	7.3	0.80	7.40%	NA	0.229	0.004	37.4	0.457	0.295	(28.4%)	523,591	117,334	6.3%	10.9%
▲ United Projects Group	UPAC.KW	7.1	1.31	3.88%	0.12	0.418	0.038	68.8	0.710	0.249	(34.2%)	9,282	3,531	0.4%	18.6%
▼ ALAFCO Aviation Lease & Finance Co.*	ALAF.KW	7.5	0.80	3.82%	0.40	0.262	(0.003)	249.4	0.372	0.059	(24.9%)	20,022	5,136	1.6%	10.7%
▼ Mubarrad Holding Co.	MBRD.KW	6.1	0.50	7.95%	0.85	0.062	(0.000)	10.1	0.080	0.040	(4.9%)	172,752	10,411	31.0%	8.3%
▲ KGL Logistics Co.	LOGK.KW	5.2	0.32	0.00%	0.82	0.042	0.000	31.1	0.046	0.040	4.7%	1,034,651	43,683	26.7%	6.0%
▼ Integrated holding Co.	INTEGRATED.KW	8.3	2.06	6.15%	0.23	0.650	(0.004)	143.0	0.970	0.720	(22.6%)	205,770	133,985	10.7%	24.8%
= Sharjah Cement Co.	SCEM.KW	18.0	0.37	11.11%	0.45	0.072	0.000	43.8	0.090	0.056	(17.1%)	0	0	0.1%	2.0%
▲ Gulf Cement Co.	GCEM.KW	NM	0.57	13.45%	0.46	0.060	0.004	48.9	0.088	0.059	(12.4%)	10,980	620	0.4%	NM
= Umm Al-Qaiwain General Investments Co.	QIC.KW	16.4	0.35	11.93%	0.20	0.059	0.000	21.3	0.077	0.052	(11.7%)	0	0	0.4%	2.1%
= Fujairah Cement Industries Co.	FCEM.KW	17.4	0.23	10.91%	0.52	0.055	0.000	19.6	0.077	0.055	(13.4%)	5,100	276	4.9%	1.3%
▼ Ras-Al-Khaimah for White Cement Co.	RKWC.KW	28.6	0.49	8.13%	0.19	0.062	(0.004)	30.8	0.087	0.059	(17.9%)	20,000	1,232	0.1%	1.7%
Industrials		14.0	1.10	3.92%				3,319.4			(2.5%)	4,816,792	1,900,898		7.8%

Company	Reuters Ticker	Valuation Multiples				Price (KWD)		MKT Cap (KWD Mn.)	52 Weeks High (KWD)	52 Weeks Low (KWD)	YTD-19 Return #	Daily Trading Data		YTD-19 Capital Turnover	ROE
		Trailing P/E (X)	Trailing P/BV (X)	Dividend Yield	Beta	Closing	DTD Change					Volume (Shrs.)	Value (KWD)		
= Palms Agro Production Co.	PAPK.KW	NM	0.28	24.96%	0.21	0.040	0.000	2.1	0.080	0.037	(33.3%)	0	0	0.6%	NM
▲ Livestock Transport & Trading Co.	CATT.KW	NM	1.11	2.43%	0.37	0.199	0.018	43.1	0.259	0.031	5.9%	20,000	3,980	0.9%	NM
▼ Danah Alsafat Foodstuff Co.	DANK.KW	NM	0.34	0.00%	0.52	0.031	(0.000)	3.8	0.053	0.036	(18.4%)	20,465	656	12.1%	NM
= Mezzan Holding Co.	MEZZ.KW	20.2	1.46	3.15%	0.61	0.499	0.000	155.4	0.771	0.431	(0.2%)	13,724	6,789	9.5%	7.2%
Consumer Goods		56.8	1.25	3.16%				204.3			0.1%	54,189	11,425		2.2%
= Advanced Technology Co.	ATCK.KW	22.6	2.59	2.00%	NA	1.000	0.000	150.0	1.000	0.067	0.0%	0	0	0.0%	11.5%
= Yiacco Medical Co.	YIAC.KW	NM	15.46	0.00%	0.62	0.067	0.000	12.1	0.142	0.080	(37.9%)	0	0	0.0%	NM
▼ Al-Maidan Clinic For Oral Health Services Co.	MIDAN.KW	53.0	8.69	0.41%	0.01	1.220	(0.040)	305.0	1.260	1.080	1.7%	246,000	300,120	0.1%	16.4%
Health Care		NM	4.98	0.91%				467.1			(0.5%)	246,000	300,120		4.8%
= Kuwait National Cinema Co.	KCIN.KW	10.9	1.22	5.63%	0.15	0.900	0.000	91.0	1.090	0.830	(15.8%)	0	0	0.1%	11.2%
= Kuwait Hotels Co.	KHOT.KW	NM	1.16	0.00%	NA	0.100	0.000	5.8	0.130	0.050	(23.1%)	0	0	0.0%	NM
▼ Sultan Center Food Products Co.	SCFK.KW	12.6	0.73	0.00%	0.71	0.055	(0.001)	31.5	0.076	0.013	3.2%	31,500	1,697	8.6%	5.8%
▼ Kuwait Cable Vision Co.	KWTV.KW	NM	0.89	0.00%	0.39	0.024	(0.002)	0.9	0.033	0.007	20.0%	5,541	133	1.5%	NM
▼ IFA Hotels & Resorts Co.*	IFAH.KW	NM	1.02	0.00%	0.16	0.066	(0.003)	41.6	0.110	0.054	(26.4%)	500	33	0.2%	NM
▼ Oula Fuel Marketing Co.	OULA.KW	12.4	0.71	4.21%	0.45	0.117	(0.001)	47.3	0.138	0.055	(0.8%)	379,640	44,147	2.1%	5.7%
▼ Kuwait Resorts Co.	MUNK.KW	8.5	0.41	8.93%	0.74	0.056	(0.001)	11.0	0.067	0.052	(0.5%)	105,105	5,886	36.3%	4.8%
▼ Jazeera Airways Co.	JAZK.KW	26.3	4.63	4.00%	0.28	0.876	(0.004)	175.2	0.880	0.114	20.0%	29,100	24,961	5.5%	17.6%
▼ Soor Fuel Marketing Co.	SOOR.KW	13.9	0.70	4.23%	0.40	0.117	(0.002)	47.4	0.139	0.108	1.7%	305,597	35,788	1.8%	5.0%
= Future Kid Entertainment and R.E Co.	KIDK.KW	11.2	0.59	11.49%	NA	0.103	0.000	12.0	0.135	0.088	8.4%	5,000	515	2.4%	5.2%
▼ Al Rai Media Group Co.	ALRA.KW	NM	0.77	NM	0.56	0.046	(0.001)	10.7	0.135	0.047	(24.6%)	40,000	1,713	3.4%	NM
▼ Jiyad Holding Co	JIYAD.KW	11.0	0.51	0.00%	0.72	0.056	(0.001)	19.5	0.103	0.064	(22.0%)	130,004	7,031	35.9%	4.6%
▼ Al Eid Food Co.	ALEID.KW	3.1	0.27	0.00%	NA	0.044	(0.004)	4.4	0.077	0.052	(33.3%)	75,000	3,380	1.0%	8.7%
Consumer Services		NM	1.10	4.83%				498.3			(2.6%)	1,106,987	125,283		NM
▼ Zain	ZAIN.KW	11.1	1.70	5.96%	1.66	0.503	(0.001)	2,176.5	0.506	0.367	12.0%	4,945,716	2,477,671	7.3%	15.4%
▼ National Mobile Telecom Co.	OORE.KW	11.5	0.61	7.37%	0.51	0.675	(0.002)	340.2	0.897	0.012	(5.5%)	29,143	19,676	0.5%	5.4%
▼ AAN digital services Co.	AAN.KW	NM	0.38	0.00%	1.60	0.013	(0.000)	11.0	0.022	0.016	(27.6%)	191,995	2,419	15.2%	NM
▼ Kuwait Telecommunication Co.	VIVA.KW	8.0	2.11	4.93%	0.76	0.811	(0.002)	405.0	0.899	0.683	1.4%	15,042	12,275	0.8%	26.3%
Telecommunications		10.6	1.43	5.96%				2,932.7			7.9%	5,181,896	2,512,041		13.4%
▼ National Bank of Kuwait	NBKK.KW	17.1	2.00	3.39%	1.34	0.969	(0.012)	6,321.7	0.990	0.270	22.0%	3,506,550	3,406,673	7.5%	11.7%
▼ Gulf Bank	GBKK.KW	16.8	1.52	3.04%	0.93	0.313	(0.005)	954.1	0.330	0.233	24.2%	10,205,761	3,194,847	42.6%	9.0%
▼ Commercial Bank of Kuwait	CBKK.KW	16.5	1.44	3.43%	0.72	0.527	(0.003)	1,049.8	0.700	0.299	15.9%	210,036	108,215	0.5%	8.7%
▼ Ahli Bank of Kuwait	ABKK.KW	12.3	0.89	4.34%	0.60	0.320	(0.010)	518.1	0.350	0.284	8.5%	125,000	39,580	0.9%	7.2%
▼ Ahli United Bank - Kuwait	BKME.KW	12.8	1.52	4.06%	0.75	0.317	(0.001)	653.9	0.369	0.249	12.1%	580,881	183,090	3.0%	11.9%
▼ Kuwait International Bank	KIBK.KW	14.7	1.12	3.35%	0.96	0.284	(0.001)	306.4	0.343	0.216	11.9%	3,329,035	943,630	30.1%	7.6%
= Burgan Bank	BURG.KW	10.5	1.15	3.45%	0.98	0.330	0.000	866.3	0.405	0.241	24.6%	628,308	206,509	10.5%	11.0%
▼ Kuwait Finance House	KFH.KW	21.0	2.52	2.63%	1.58	0.684	(0.009)	4,771.9	0.718	0.499	23.1%	9,079,224	6,220,232	7.7%	12.0%
▼ Boubyan Bank	BOUK.KW	30.3	4.17	1.12%	0.91	0.590	(0.007)	1,701.6	0.630	0.215	27.2%	618,984	363,331	2.0%	13.7%
▼ Warba Bank	WARB.KW	29.0	1.90	0.00%	0.89	0.246	(0.005)	369.0	0.265	0.205	17.1%	1,393,934	343,109	19.7%	6.5%
▼ Ahli United Bank - Bahrain	AUBK.KW	10.7	1.90	4.52%	0.75	0.257	(0.002)	2,255.0	0.277	0.019	39.9%	11,573,938	2,959,746	14.6%	17.8%
= Ithmaar Bank	ITHMR.KW	NM	1.91	0.00%	1.54	0.022	0.000	67.6	0.038	0.024	(10.8%)	0	0	4.9%	NM
Banks		16.7	1.93	3.10%				19,835.4			23.2%	41,251,651	17,968,963		11.6%

Boursa Kuwait Daily Bulletin

Thursday, May 9, 2019

Company	Reuters Ticker	Valuation Multiples				Price (KWD)		MKT Cap (KWD Mn.)	52 Weeks High (KWD)	52 Weeks Low (KWD)	YTD-19 Return #	Daily Trading Data		YTD-19	
		Trailing P/E (X)	Trailing P/BV (X)	Dividend Yield	Beta	Closing	DTD Change					Volume (Shrs.)	Value (KWD)	Capital Turnover	ROE
= Kuwait Insurance Co.	KINS.KW	7.1	0.83	7.21%	0.01	0.330	0.000	64.0	0.427	0.256	(8.3%)	83,299	27,489	1.0%	11.6%
▲ Gulf Insurance Group	GINS.KW	9.8	1.31	5.51%	0.05	0.625	0.005	116.9	0.730	0.401	(4.6%)	3,810	2,353	0.1%	13.4%
= Ahleiah Insurance Co.	AINS.KW	9.5	0.85	7.64%	0.21	0.450	0.000	90.0	0.450	0.056	5.4%	0	0	1.4%	9.0%
▼ Warba Insurance Co.	WINS.KW	16.1	0.35	0.00%	0.62	0.073	(0.000)	12.6	0.092	0.055	10.2%	1,500	105	1.3%	2.2%
▲ Kuwait Reinsurance Co.	KWRE.KW	8.1	0.56	3.23%	NA	0.145	0.013	27.4	0.198	0.037	(21.2%)	10,600	1,537	0.3%	6.9%
= First Takaful Insurance Co.	FTIK.KW	5.8	0.57	0.00%	0.11	0.045	0.000	4.8	0.053	0.029	1.8%	0	0	0.2%	9.7%
▼ Wethaq Takaful Insurance Co.	WETH.KW	38.3	0.28	0.00%	0.72	0.030	(0.001)	3.3	0.045	0.024	7.5%	30,000	900	14.8%	0.7%
= Bahrain Kuwait Insurance Co.	BKIK.KW	11.3	0.99	12.50%	0.04	0.200	0.000	28.6	0.200	0.200	0.0%	0	0	0.0%	8.8%
Insurance		9.2	0.86	6.45%				347.6			(3.5%)	129,209	32,384		9.3%
▼ Sokouk Holding Co.	SHCK.KW	NM	0.43	0.00%	1.46	0.035	(0.000)	20.9	0.052	0.038	(10.9%)	300,100	10,463	26.5%	NM
▼ Kuwait Real Estate Co.	KREK.KW	9.8	0.50	0.00%	1.38	0.070	(0.002)	66.3	0.075	0.044	34.9%	2,135,100	151,303	38.0%	5.1%
= United Real Estate Co.	UREK.KW	NM	0.37	0.00%	0.62	0.061	0.000	72.5	0.070	0.055	1.7%	9,500	555	0.3%	NM
▼ National Real Estate Co.	NREK.KW	9.6	0.40	0.00%	1.35	0.076	(0.005)	103.6	0.124	0.080	(16.4%)	270,753	20,750	6.2%	4.2%
= Salhia Real Estate Co.	SREK.KW	10.2	1.18	5.59%	0.31	0.345	0.000	176.9	0.350	0.324	4.5%	0	0	1.7%	11.6%
▲ Tamdeen Real Estate Co.	TAMK.KW	29.4	1.10	3.15%	0.28	0.370	0.010	159.8	0.385	0.126	5.7%	10	4	0.4%	3.7%
▼ Ajial Real Estate Entertainment Co.	AREC.KW	10.2	0.20	3.68%	0.38	0.135	(0.005)	25.0	0.159	0.032	0.0%	2	0	2.0%	2.0%
= Al Massaleh Real Estate Co.	MREC.KW	NM	0.41	0.00%	0.44	0.037	0.000	8.7	0.049	0.028	1.1%	0	0	2.6%	NM
= Arab Real Estate Co.	ARAB.KW	NM	0.29	0.00%	1.42	0.032	0.000	16.5	0.035	0.027	12.2%	400,101	12,103	11.8%	NM
▼ AL-Enma'a Real Estate Co.*	ENMA.KW	NM	0.40	0.00%	0.75	0.039	(0.001)	17.3	0.048	0.030	17.7%	842,050	32,581	34.7%	NM
▼ Mabaneer Co.	MABK.KW	13.5	1.66	1.66%	1.02	0.679	(0.010)	707.9	0.710	0.076	18.8%	857,060	584,439	5.5%	12.4%
= Injazat Real Estate Development Co.	INJA.KW	7.2	0.47	8.12%	0.51	0.084	0.000	29.0	0.090	0.010	(2.4%)	0	0	1.6%	6.5%
▼ Investors Holding Group Co.	INVK.KW	NM	0.29	0.00%	1.62	0.011	(0.000)	6.5	0.016	0.012	(13.9%)	8,679,444	90,523	85.2%	NM
= International Resorts Co.	IRCK.KW	6.7	0.35	0.00%	1.47	0.020	0.000	3.1	0.030	0.018	(9.4%)	0	0	1.0%	5.2%
▼ The Commercial Real Estate Co.	TIJK.KW	10.9	0.54	5.62%	0.81	0.090	(0.002)	157.8	0.098	0.030	(2.2%)	132,456	11,921	5.3%	4.9%
= Sanam Real Estate Co.	SANK.KW	NM	0.64	0.00%	0.48	0.050	0.000	6.0	0.063	0.026	42.7%	0	0	2.8%	NM
▼ A'ayan Real Estate Co.	AYRE.KW	4.6	0.38	7.52%	0.89	0.066	(0.000)	27.2	0.068	0.043	13.7%	72,800	4,768	9.9%	8.3%
= Aqar Real Estate Investment Co.	AQAR.KW	11.6	0.50	7.54%	NA	0.060	0.000	14.1	0.072	0.024	(2.0%)	0	0	0.4%	4.3%
▼ Kuwait Real Estate Holding Co.	ALAQ.KW	52.7	0.50	0.00%	1.13	0.029	(0.002)	5.5	0.035	0.020	15.6%	79,101	2,286	1.7%	0.9%
▼ MAZAYA Holding Co.	MAZA.KW	8.1	0.45	13.36%	1.40	0.060	(0.001)	41.1	0.098	0.070	(14.8%)	3,475,187	208,113	32.5%	5.6%
▼ Tijara Real Estate & Investment Co.	TIJA.KW	19.2	0.47	6.06%	0.71	0.050	(0.001)	18.3	0.057	0.025	1.0%	10,000	495	0.5%	2.5%
▲ Al TAMEER Real Estate Investment Co.	AMAR.KW	NM	0.41	0.00%	1.50	0.028	0.001	6.8	0.040	0.026	1.1%	1,803,831	50,490	95.4%	NM
= Arkan Al-Kuwait Real Estate Co. *	ARKK.KW	7.0	0.57	10.00%	0.34	0.080	0.000	20.1	0.091	0.072	(4.2%)	0	0	1.6%	8.2%
= Al-Argan International Real Estate Co.	ARGK.KW	63.9	0.40	0.00%	0.37	0.133	0.000	35.2	0.150	0.013	(2.2%)	0	0	0.0%	0.6%
▼ Abyaar Real Estate Development Co.	ABYR.KW	NM	0.17	0.00%	1.56	0.013	(0.000)	14.7	0.020	0.015	(12.5%)	1,157,803	15,322	52.5%	NM
▲ Munshaat Real Estate Projects Co.	MUNS.KW	NM	0.61	0.00%	1.10	0.089	0.001	28.7	0.120	0.031	(11.0%)	83,771	7,367	3.0%	NM
▲ First Dubai For Real Estate Development	FIRST.KW	11.2	0.44	0.00%	1.60	0.033	0.000	32.9	0.047	0.035	(12.7%)	857,306	27,792	3.4%	4.0%
= Kuwait Business Town Real Estate Co.	KBTK.KW	10.2	0.39	7.11%	1.37	0.042	0.000	25.2	0.054	0.039	(6.6%)	15,000	633	4.0%	3.8%
= Real Estate Asset Management Co.	REAM.KW	35.0	1.13	2.91%	0.07	0.171	0.000	17.9	1.415	0.036	(5.0%)	0	0	0.0%	3.2%
▲ MENA Real Estate Co. *	MENK.KW	NM	0.49	0.00%	0.93	0.039	0.000	5.3	0.050	0.019	8.7%	162,437	6,185	158.5%	NM
▼ Al Mudon International Real Estate Co.	ALMK.KW	NM	0.14	0.00%	1.37	0.019	(0.001)	1.9	0.032	0.024	(33.7%)	281,200	5,376	11.8%	NM
▲ Real Estate Trade Centers Co.	MARA.KW	NM	0.18	0.00%	0.44	0.030	0.002	4.0	0.037	0.018	36.8%	1,700	48	20.1%	0.1%
= Kuwait Remal Real Estate Co.	REMA.KW	NM	0.46	0.00%	1.01	0.035	0.000	10.7	0.050	0.029	(16.7%)	87,000	3,010	23.4%	NM
▼ Mashaer Holding Co.	MASHAER.KW	NM	0.59	0.00%	0.26	0.069	(0.001)	12.4	0.088	0.015	(17.6%)	488,303	33,714	117.7%	NM
▼ Effect Real Estate Co.	EFFECT.KW	NM	0.28	0.00%	0.84	0.020	(0.001)	1.6	0.025	0.009	119.8%	500,000	10,000	5.3%	NM
▼ Ajwan Gulf Real Estate Co.	AJWN.KW	NM	0.22	0.00%	0.41	0.013	(0.000)	2.7	0.025	0.017	(29.7%)	927,791	11,573	50.1%	NM
= Al Masaken Intl. Real Estate Dev. Co.	MASKN.KW	NM	0.83	0.00%	0.37	0.070	0.000	7.0	0.100	0.036	12.0%	0	0	0.2%	NM
= Dalqan Real Estate Co.	DALQ.KW	NM	2.79	0.00%	NA	0.350	0.000	17.5	0.350	0.179	0.0%	0	0	0.0%	2.2%
= Dar Al Thuraya Real Estate Co.	THURY.KW	32.4	1.76	0.00%	NA	0.179	0.000	26.2	0.220	0.220	(18.6%)	0	0	0.0%	5.4%
Real Estate		29.2	0.70	2.70%				1,955.0			4.9%	23,629,806	1,301,816		2.4%

Company	Reuters Ticker	Valuation Multiples				Price (KWD)		MKT Cap (KWD Mn.)	52 Weeks High (KWD)	52 Weeks Low (KWD)	YTD-19 Return #	Daily Trading Data		YTD-19	
		Trailing P/E (X)	Trailing P/BV (X)	Dividend Yield	Beta	Closing	DTD Change					Volume (Shrs.)	Value (KWD)	Capital Turnover	ROE
▼ Kuwait Investment Co.	KINV.KW	7.1	0.60	7.83%	0.62	0.127	(0.002)	70.0	0.139	0.103	(2.3%)	95,000	12,080	7.5%	8.4%
▲ Commercial Facilities Co.	FACI.KW	13.0	0.67	7.28%	0.58	0.208	0.004	111.6	0.208	0.021	18.9%	590,000	120,754	2.4%	5.1%
= Int'l Financial Advisors Co.	IFIN.KW	NM	0.54	0.00%	1.63	0.024	0.000	16.9	0.039	0.021	(16.4%)	222,131	5,191	24.1%	NM
▼ National Investment Co.	NINV.KW	13.7	0.57	5.54%	1.32	0.115	(0.002)	100.8	0.123	0.070	39.4%	3,117,338	358,667	14.1%	4.1%
= Kuwait Projects Co.(Holding)	KPRO.KW	12.3	1.25	5.24%	0.77	0.224	0.000	346.6	0.252	0.033	7.7%	223,209	49,850	3.6%	10.2%
▼ Coast Invest. & Development Co.	COAS.KW	16.6	0.42	0.00%	2.01	0.038	(0.002)	23.8	0.045	0.028	14.5%	190,100	6,844	8.8%	2.6%
▼ The Securities House Co.	SECH.KW	NM	0.56	0.00%	1.29	0.050	(0.000)	22.5	0.062	0.044	(5.5%)	1,290,280	64,532	38.0%	0.5%
▲ Arzan Financial Group For Fin. & Invest.	ARZA.KW	10.3	0.25	0.00%	1.14	0.033	0.000	26.2	0.038	0.025	9.4%	1,535,352	49,423	13.9%	2.5%
= Kuwait Financial Centre	MARKZ.KW	18.8	0.47	5.59%	0.68	0.090	0.000	43.0	0.110	0.035	(10.5%)	0	0	0.7%	2.5%
▼ Kuwait & M.E. Financial Inv. Co.	KMEF.KW	50.0	0.63	0.00%	0.74	0.036	(0.004)	9.6	0.054	0.019	13.8%	924,562	33,856	13.2%	1.3%
▼ Al-Aman Investment Co.	AMAN.KW	11.4	0.59	0.00%	0.81	0.063	(0.000)	9.4	0.081	0.034	29.2%	1,555,655	95,773	65.6%	5.2%
▼ First Investment Co.	OLAK.KW	NM	0.27	0.00%	0.96	0.038	(0.001)	24.6	0.045	0.016	(4.5%)	1,378,577	52,088	72.4%	0.3%
▲ Al-Mal Investment Co.	MALK.KW	NM	0.50	0.00%	1.65	0.018	0.000	5.4	0.025	0.017	(8.4%)	9,802	171	16.6%	NM
▲ Gulf Investment House	GIHK.KW	1.9	0.67	0.00%	1.12	0.060	0.003	24.3	0.083	0.014	236.0%	9,701	549	8.3%	35.8%
▼ A'ayan Leasing & Investment Co.	AAYA.KW	12.5	0.46	0.00%	1.37	0.046	(0.000)	37.8	0.056	0.028	24.4%	892,266	41,181	126.9%	3.7%
▼ Bayan Investment Co.	BAYK.KW	NM	0.45	0.00%	1.62	0.041	(0.000)	16.3	0.052	0.034	(14.3%)	101	4	2.7%	NM
= Osoul Investment Co.	OSUL.KW	15.9	0.53	9.39%	0.48	0.059	0.000	11.2	0.064	0.050	(2.3%)	0	0	1.3%	3.4%
= Kuwait Finance & Investment Co.	KFSK.KW	NM	0.33	0.00%	0.45	0.040	0.000	12.9	0.049	0.033	17.6%	1,828	71	6.1%	0.4%
▲ KAMCO Investment Co.	KAMC.KW	7.7	0.55	6.01%	0.14	0.075	0.003	19.7	0.091	0.062	8.7%	27,058	1,938	1.2%	7.2%
▼ National International Holding Co.	NIHK.KW	6.7	0.38	6.50%	0.93	0.071	(0.004)	15.4	0.081	0.053	14.5%	85,050	6,051	4.7%	5.7%
▲ UniCap Investment and Finance	UNICAP.KW	6.8	0.62	4.76%	0.70	0.063	0.002	15.0	0.085	0.050	(20.9%)	1,025,753	62,044	14.6%	9.1%
▼ Al Madar Finance & Investment Co.	MADR.KW	2.2	1.56	0.00%	0.44	0.156	(0.001)	33.4	0.180	0.014	(6.6%)	509,246	79,472	32.9%	69.5%
▲ Al-Deera Holding	DEER.KW	6.2	0.45	0.00%	1.54	0.015	0.001	2.9	0.026	0.016	(20.0%)	15,837	227	3.8%	7.2%
▼ Al Salam Group Holding Co.	SAGH.KW	29.7	0.30	0.00%	1.59	0.035	(0.002)	9.4	0.040	0.017	9.0%	3,222,194	114,371	35.8%	1.0%
= Ektitab Holding Co.	EKTT.KW	NM	0.35	0.00%	1.25	0.018	0.000	5.8	0.029	0.019	(12.9%)	0	0	8.5%	NM
▼ Al Madina For Finance & Investment Co.	MADI.KW	NM	0.41	0.00%	1.24	0.018	(0.002)	7.4	0.030	0.020	(10.7%)	5,945,812	112,769	64.1%	NM
▼ NOOR Financial Investment Co.	NOOR.KW	1.5	0.67	0.00%	0.75	0.089	(0.001)	36.7	0.095	0.046	15.6%	475,493	41,729	35.7%	45.2%
▼ Tamdeen Investment Co.	TAMI.KW	13.0	0.50	4.30%	0.18	0.278	(0.012)	95.9	0.349	0.232	(0.7%)	1,101	306	0.7%	3.9%
= Kuwait Bahrain Int'l Exchange Co.	EXCH.KW	14.6	0.61	0.00%	NA	0.086	0.000	4.0	N/A	N/A	0.0%	0	0	0.0%	4.2%
▼ Kuwait Syrian Holding Co.	KSHC.KW	NM	0.50	5.77%	1.57	0.052	(0.002)	9.2	0.082	0.027	30.0%	11,850	579	39.9%	NM
▼ Asiya Capital Investment Co.	ASIYA.KW	26.2	0.40	0.00%	0.89	0.036	(0.000)	28.6	0.044	0.030	5.3%	15,000	537	2.8%	1.5%
▲ Gulf North Africa Holding Co.	GNAH.KW	NM	0.79	0.00%	1.68	0.054	0.001	8.1	0.057	0.034	10.2%	439,299	23,709	14.3%	NM
= Amwal International Investment Co.	AMWA.KW	13.7	0.47	0.00%	0.65	0.046	0.000	8.3	0.087	0.049	(25.8%)	21,700	998	0.1%	3.5%
▼ Alimtiqaz Investment Group	ALIMK.KW	7.6	0.74	5.68%	0.82	0.135	(0.002)	153.0	0.143	0.122	0.7%	1,416,105	192,241	9.1%	9.7%
= Tamkeen Holding Co.	TAMKE.KW	NM	0.12	0.00%	NA	0.012	0.000	0.8	0.015	0.003	19.2%	0	0	1.1%	NM
▼ Manazel Holding Co.	MANK.KW	NM	0.61	0.00%	1.75	0.025	(0.000)	10.7	0.037	0.024	0.8%	10	0	3.7%	NM
▲ National Industries Group	NIND.KW	17.2	0.97	4.78%	1.34	0.239	0.001	341.3	0.241	0.147	58.8%	17,394,661	4,147,900	37.6%	5.6%
= Warba Capital Holding Co.	WARBACAP.KW	NM	0.87	0.00%	1.21	0.087	0.000	6.3	0.089	0.019	184.3%	710,842	61,837	22.9%	NM
▼ Arabi Holding Group Co.	AGHC.KW	33.5	0.56	0.00%	0.28	0.083	(0.006)	14.4	0.092	0.060	20.3%	32,000	2,561	1.9%	1.7%
▼ Privatization Holding Co.	KPPC.KW	NM	0.42	8.40%	1.28	0.060	(0.001)	36.3	0.065	0.018	13.3%	344,100	20,393	18.1%	NM
= Credit Rating & Collection Co.	TAHS.KW	NM	0.67	0.00%	NA	0.023	0.000	3.8	0.024	0.018	3.1%	0	0	0.2%	NM
= Egypt Kuwait Holding Co.	EKHK.KW	18.6	3.11	4.40%	0.36	0.455	0.000	466.1	0.475	0.069	40.0%	0	0	0.2%	16.7%
▲ GFH Financial Group	GFH.KW	6.3	0.68	5.74%	1.16	0.075	0.001	275.4	0.113	0.066	(2.6%)	286,041	20,822	4.3%	10.8%
= Inovent	INOV.KW	5.1	0.52	6.67%	0.98	0.075	0.000	21.5	0.092	0.067	(6.3%)	0	0	3.9%	10.3%
= Sanad Holding Co.	SANAD.KW	NM	1.22	0.00%	0.06	0.110	0.000	48.1	0.110	0.031	10.0%	0	0	0.0%	1.4%
= Amar For Finance and Leasing Co.	AMARF.KW	NM	0.36	0.00%	0.09	0.031	0.000	6.2	0.049	0.033	(24.9%)	0	0	0.1%	NM
▼ Al-Manar Financing & Leasing Co.	ALMANAR.KW	18.4	0.37	0.00%	NA	0.039	(0.001)	11.9	0.075	0.000	(27.6%)	1,000	39	7.6%	2.0%
Financial Services		12.1	0.77	4.38%				2,608.5			24.4%	44,016,054	5,781,557		6.4%

Boursa Kuwait Daily Bulletin

Thursday, May 9, 2019

Company	Reuters Ticker	Valuation Multiples				Price (KWD)		MKT Cap (KWD Mn.)	52 Weeks High (KWD)	52 Weeks Low (KWD)	YTD-19 Return #	Daily Trading Data		YTD-19 Capital Turnover	ROE
		Trailing P/E (X)	Trailing P/BV (X)	Dividend Yield	Beta	Closing	DTD Change					Volume (Shrs.)	Value (KWD)		
▼ Automated Systems Co.	ASCK.KW	17.2	0.64	17.65%	NA	0.085	(0.002)	8.5	0.149	0.066	(21.3%)	9	1	0.4%	3.7%
= Osos Holding Group Co.	OSOS.KW	8.2	0.76	10.00%	0.45	0.100	0.000	10.0	0.118	0.079	(2.0%)	0	0	9.6%	9.2%
▼ Hayat Communications Co.	HAYK.KW	10.2	0.28	0.00%	1.52	0.030	(0.014)	2.8	0.080	0.027	(55.4%)	100	3	0.1%	2.7%
Technology		10.7	0.58	11.74%				21.3			(21.9%)	109	4		5.4%
Boursa Kuwait		16.0	1.41	3.60%				33,503.0			15.5%	129,653,378	31,026,595		8.8%

Year-to-Date 2019 Top Movers & Most Active Stocks

YTD Top % Gainers	Close (KWD)	Percent Change
Gulf Investment House	0.060	236.0%
Warba Capital Holding Co.	0.087	184.3%
National Industries Group	0.239	58.8%
Sanam Real Estate Co.	0.050	42.7%
Egypt Kuwait Holding Co.	0.455	40.0%

YTD Top % Losers	Close (KWD)	Percent Change
Yiaco Medical Co.	0.067	(37.9%)
United Projects Group	0.418	(34.2%)
Al Mudon International Real Estate Co.	0.019	(33.7%)
Al Eid Food Co.	0.044	(33.3%)
Ajwan Gulf Real Estate Co.	0.013	(29.7%)

YTD Most Active by Volume	Close (KWD)	Volume (Shrs.)
Gulf Bank	0.313	1,298,215,194
Ahli United Bank - Bahrain	0.257	1,280,141,281
A'ayan Leasing & Investment Co.	0.046	1,033,061,242
Abyaar Real Estate Development Co.	0.013	581,378,691
National Industries Group	0.239	536,739,732

YTD Most Active by Value	Close (KWD)	Value (KWD)
National Bank of Kuwait	0.969	444,769,834
Gulf Bank	0.313	373,444,644
Kuwait Finance House	0.684	349,288,923
Ahli United Bank - Bahrain	0.257	315,089,122
Zain	0.503	147,756,317

* Different Fiscal Year Company