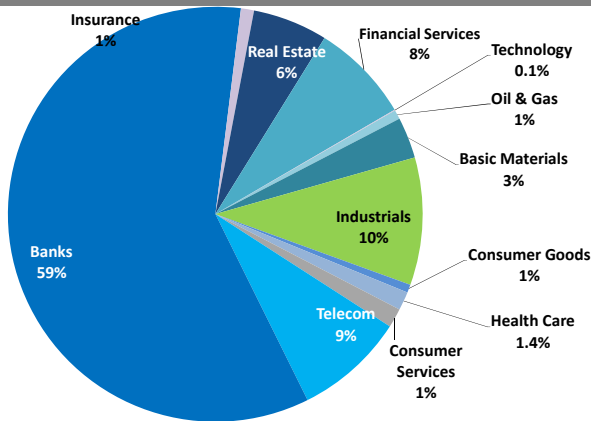


Boursa Kuwait Daily Report

May 6, 2019

Sector Weight by Market Cap



Market Capitalization - Sector Returns

	Market Cap. (KWD Mn)	DTD % Chg	MTD % Chg	YTD % Chg
Boursa Kuwait	33,104.3	▲ 0.4%	2.3%	14.1%
Oil & Gas	240.6	▼ (1.8%)	3.3%	5.7%
Basic Materials	1,057.1	▲ 1.3%	1.2%	2.5%
Industrials	3,289.2	▼ (1.0%)	0.8%	(3.4%)
Consumer Goods	206.7	▲ 0.3%	(0.7%)	1.2%
Health Care	477.1	= 0.0%	0.0%	1.6%
Consumer Services	500.8	▼ (0.3%)	0.1%	(2.1%)
Telecommunications	2,830.3	▼ (0.2%)	2.6%	4.2%
Banks	19,640.7	▲ 0.8%	2.2%	22.0%
Insurance	338.9	▲ 0.1%	(1.8%)	(5.9%)
Real Estate	1,929.6	▲ 0.1%	3.4%	3.6%
Financial Services	2,570.5	▼ (0.2%)	5.5%	22.6%
Technology	22.7	▲ 2.9%	2.0%	(16.7%)

Top 10 Companies by Market Capitalization

Company Name	Market Cap. (Mn KWD)	P/E (X)	ROE* (%)
1- National Bank of Kuwait	6,158.6	16.6	11.7%
2- Kuwait Finance House	4,764.9	21.0	12.0%
3- Ahli United Bank - Bahrain	2,237.5	10.6	17.8%
4- Zain	2,077.0	10.6	15.4%
5- Boubyan Bank	1,661.2	29.6	13.7%
6- Agility (PWC Logistics)	1,338.1	16.5	8.0%
7- Commercial Bank of Kuwait	1,087.7	17.1	8.7%
8- Gulf Bank	957.1	16.9	9.0%
9- Burgan Bank	863.6	10.5	11.0%
10- Mabaneer Co.	689.1	13.1	12.4%
Total	21,835	15.61	12.2%

*: ROE is calculated based on FY2018 net profit & shareholders' equity as of 31-December-18

Top Movers and Most Active Stocks

Today's Top % Gainers	Close (KWD)	Change (KWD)	Percent Change
Automated Systems Co.	0.097	0.018	23.2%
Tamdeen Real Estate Co.	0.330	0.030	10.0%
International Resorts Co.	0.020	0.002	9.1%
Commercial Bank of Kuwait	0.546	0.040	7.9%
Warba Insurance Co.	0.073	0.004	5.8%

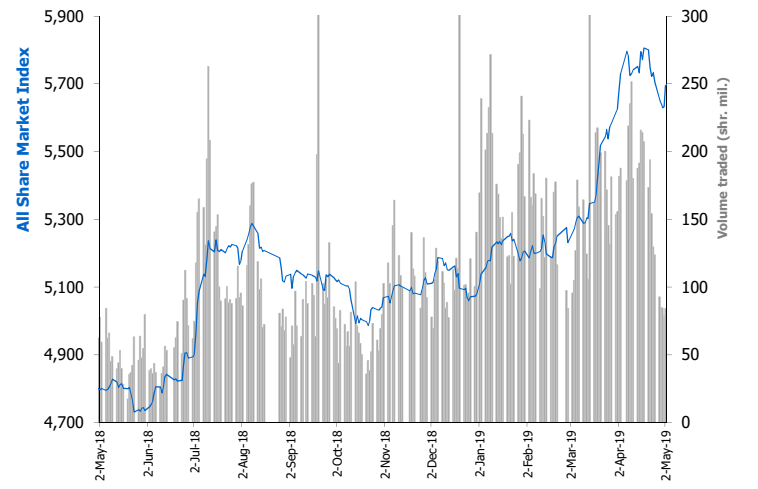
Today's Top % Losers	Close (KWD)	Change (KWD)	Percent Change
The Energy House Co.	0.030	(0.007)	(18.7%)
Amwal International Investment Co.	0.051	(0.006)	(10.0%)
Kuwait Portland Cement Co.	1.200	(0.130)	(9.8%)
National Cleaning Co.	0.063	(0.007)	(9.4%)
National Industries Co.	0.180	(0.017)	(8.6%)

Today's Most Active by Volume	Close (KWD)	Percent Change	Volume (Shares)
Investors Holding Group Co.	0.011	(1.9%)	8,185,687
Gulf Bank	0.314	0.6%	6,052,314
A'ayan Leasing & Investment Co.	0.047	(3.1%)	4,385,728
Kuwait Finance House	0.683	1.5%	4,256,704
Al-Aman Investment Co.	0.065	4.2%	4,026,835

Source: Boursa Kuwait, KAMCO Research

Market Breadth	46	47	83
Benchmark Return	Closing Value	DTD Chg	MTD % Chg
Premier Market Index	6,190.64	20.86	0.3%
Main Market Index	4,845.34	27.96	0.6%
All Share Market Index	5,731.91	23.06	0.4%
Market Cap (KWD Mn)	33,104.35	132.45	0.4%

Index Performance relative to Volume



Market Trading Data and Volatility

Trading Indicators	Today's Value	DTD Chg	DTD % Chg	Average Daily YTD 2019	Average Daily YTD 2018
Volume (Shrs Mn)	65.9	(2.0)	(2.9%)	165.4	81.7
Value Traded (KWD Mn)	13.6	(5.4)	(28.4%)	31.1	12.2
No. of Trades	3,316	(1,115)	(25.2%)	5,781	3,317

Today's Most Active by Value	Close (KWD)	Percent Change	Value (KWD)
Kuwait Finance House	0.683	1.5%	2,889,245
National Bank of Kuwait	0.944	0.3%	2,386,725
Gulf Bank	0.314	0.6%	1,889,224
Zain	0.480	(0.2%)	883,528
National Industries Group	0.226	0.4%	689,131

Boursa Kuwait - Premier Market

Monday, May 6, 2019

Premier Market Stocks	Closing Price			Market Capitalization			Valuation Multiples				ROE	YTD-19 Price Return	YTD-19 Trading Indicators	
	KWD	DTD Chg. (KWD)	D-T-D Return	KWD Mn	Weight in Premier Index	Weight in Boursa Kuwait	P/E (X)	P/BV (X)	Yield	Beta			Volume (Mn Shrs)	Value (KWD Mn)
▲ National Bank of Kuwait	0.944	0.003	0.3%	6,159	25.7%	18.6%	16.6	1.95	3.5%	1.34	11.7%	18.8%	477.96	431.99
▲ Gulf Bank	0.314	0.002	0.6%	957	4.0%	2.9%	16.9	1.52	3.0%	0.93	9.0%	24.6%	1,266.82	363.55
▲ Kuwait International Bank	0.280	0.004	1.4%	302	1.3%	0.9%	14.5	1.11	3.4%	0.97	7.6%	10.3%	296.47	88.74
▼ Burgan Bank	0.329	(0.002)	(0.6%)	864	3.6%	2.6%	10.5	1.15	3.5%	0.98	11.0%	24.3%	270.83	88.21
▲ Kuwait Finance House	0.683	0.010	1.5%	4,765	19.9%	14.4%	21.0	2.52	2.6%	1.59	12.0%	23.0%	504.26	327.25
▼ Boubyan Bank	0.576	(0.004)	(0.7%)	1,661	6.9%	5.0%	29.6	4.07	1.1%	0.91	13.7%	24.2%	55.69	32.41
= Kuwait Projects Co. (Holding)	0.218	0.000	0.0%	337	1.4%	1.0%	11.9	1.22	5.4%	0.77	10.2%	4.8%	53.34	11.13
▼ Mabane Co.	0.661	(0.009)	(1.3%)	689	2.9%	2.1%	13.1	1.62	1.7%	1.02	12.4%	15.6%	52.31	32.65
▲ National Industries Group (Holding)	0.226	0.001	0.4%	307	1.3%	0.9%	15.5	0.87	4.4%	1.34	5.6%	43.0%	494.42	97.50
▲ Boubyan Petrochemical Co.	0.945	0.020	2.2%	505	2.1%	1.5%	NM	1.74	4.6%	0.74	1.9%	(3.1%)	22.44	21.20
▲ Qurain Petrochemicals Industries Co.	0.389	0.001	0.3%	428	1.8%	1.3%	9.4	0.98	3.9%	0.70	10.4%	8.1%	32.98	12.58
▲ Agility Public Warehousing Co.	0.759	0.001	0.1%	1,338	5.6%	4.0%	16.5	1.32	1.6%	1.48	8.0%	8.8%	93.21	77.22
▼ Mobile Telecommunications Co.	0.480	(0.001)	(0.2%)	2,077	8.7%	6.3%	10.6	1.63	6.3%	1.66	15.4%	6.9%	290.78	135.75
▲ Human Soft Holding Co.	3.399	0.049	1.5%	415	1.7%	1.3%	13.2	6.20	5.4%	0.41	47.0%	3.6%	13.40	42.95
▲ GFH Financial Group (B.S.C)	0.075	0.002	2.0%	276	1.2%	0.8%	6.3	0.68	5.7%	1.18	10.8%	(2.3%)	156.83	12.13
▼ Ahli United Bank (B.S.C)	0.255	(0.001)	(0.4%)	2,237	9.3%	6.8%	10.6	1.89	4.6%	0.75	17.8%	38.9%	1,232.60	302.92
▲ Warba Bank	0.243	0.001	0.4%	365	1.5%	1.1%	28.6	1.87	0.0%	0.88	6.5%	15.7%	286.74	66.46
= Mezzan Holding Co.	0.505	0.000	0.0%	157	0.7%	0.5%	20.5	1.48	4.3%	0.62	7.2%	1.0%	29.31	13.52
▼ Integrated Holding Co.	0.679	(0.030)	(4.2%)	149	0.6%	0.5%	8.7	2.15	5.9%	0.31	24.8%	(19.2%)	22.82	17.35
Subtotal- Premier Market Stocks	5,731.91	23.06	0.40%	23,990	100%	72%	15.3	1.81	3.41%		11.9%	12.8%	5,653.20	2,175.50
Remaining of the Market				9,115		28%	17.2	0.86	4.62%		5.0%		8,408.06	464.66

Boursa Kuwait Daily Bulletin

Monday, May 6, 2019

Company	Reuters Ticker	Valuation Multiples				Price (KWD)		MKT Cap (KWD Mn.)	52 Weeks High (KWD)	52 Weeks Low (KWD)	YTD-19 Return #	Daily Trading Data		YTD-19 Capital Turnover	ROE
		Trailing P/E (X)	Trailing P/BV (X)	Dividend Yield	Beta	Closing	DTD Change					Volume (Shrs.)	Value (KWD)		
= Senergy Holding Co.	SENE.KW	NM	0.35	0.00%	1.42	0.026	0.000	5.2	0.037	0.023	(15.6%)	0	0	2.9%	NM
▲ Independent Petroleum Group	IPGK.KW	12.9	0.83	5.48%	0.32	0.420	0.004	79.1	0.450	0.379	4.7%	30,219	12,659	2.0%	6.5%
= National Petroleum Services Co.	NAPS.KW	8.5	2.76	6.79%	0.19	1.000	0.000	100.0	1.170	0.712	8.7%	0	0	0.6%	32.6%
▼ The Energy House Co.	ENER.KW	NM	0.94	0.00%	0.83	0.030	(0.007)	22.1	0.051	0.025	(18.7%)	2,000	61	2.0%	0.3%
▲ Gulf Petroleum Investment	GPIK.KW	NM	0.29	0.00%	1.24	0.027	0.000	12.4	0.033	0.022	(8.1%)	754,510	19,801	104.5%	NM
= Burgan Co. for Drilling, Tdg. & Maint. *	ABAR.KW	8.0	0.34	0.00%	NA	0.090	0.000	21.8	0.123	0.078	(5.3%)	0	0	0.4%	4.3%
Oil & Gas		13.7	0.87	4.63%				240.6			5.7%	786,729	32,521		6.4%
▲ Kuwait Foundry Co.	KFDC.KW	34.2	0.93	11.72%	0.45	0.256	0.011	39.4	0.289	0.175	34.0%	2,000	512	12.2%	2.7%
▲ Boubyan Petrochemicals Co.*	BPCC.KW	NM	1.74	4.63%	0.74	0.945	0.020	505.4	1.090	0.780	(3.1%)	131,194	122,695	4.2%	1.9%
= Al Kout for Industrial Projects Co.	ALKK.KW	13.5	2.72	5.95%	0.05	0.840	0.000	84.8	0.840	0.362	0.0%	0	0	0.0%	20.2%
▲ Qurain Petrochemical Industries Co. *	ALQK.KW	9.4	0.98	3.89%	0.70	0.389	0.001	427.6	0.415	0.321	8.1%	76,809	29,719	3.0%	10.4%
Basic Materials		18.2	1.32	4.70%				1,057.1			2.5%	210,003	152,926		7.3%
= Specialities Group Holding Co.	SPEC.KW	7.3	0.39	0.00%	0.36	0.073	0.000	10.9	0.082	0.054	6.1%	0	0	11.3%	5.4%
▼ Kuwait Cement Co.	KCEM.KW	26.8	1.10	6.71%	0.48	0.290	(0.011)	212.7	0.450	0.327	(23.5%)	200	58	0.3%	4.1%
▲ Gulf Cable & Electrical Ind. Co.	CABL.KW	9.5	0.52	7.12%	1.03	0.379	0.002	79.6	0.420	0.346	8.0%	140	53	5.5%	5.5%
= Heavy Eng'g Ind. & Shipbuilding Co.	SHIP.KW	7.4	1.27	5.08%	0.49	0.394	0.000	71.0	0.538	0.307	(8.8%)	665,166	261,726	14.3%	17.2%
▼ Kuwait Portland Cement Co.	PCEM.KW	11.7	1.76	8.33%	0.52	1.200	(0.130)	120.3	1.459	0.149	5.4%	2,637	3,262	5.7%	15.1%
= Shuaiba Industrial Co.	PAPE.KW	15.1	0.82	11.17%	0.17	0.150	0.000	15.1	0.249	0.015	(20.2%)	0	0	0.2%	5.4%
= Metal & Recycling Co.	MRCK.KW	NM	0.22	0.00%	0.67	0.030	0.000	3.0	0.075	0.012	(52.4%)	0	0	0.1%	NM
▼ ACICO Industries Co.	ACIC.KW	21.0	0.48	3.32%	0.43	0.150	(0.001)	47.6	0.260	0.150	(10.2%)	114,634	17,270	3.3%	2.3%
= Hilal Cement Co.	HCKK.KW	NM	0.92	0.00%	0.15	0.125	0.000	12.7	0.139	0.067	11.6%	0	0	0.7%	NM
▼ National Industries Co.	NIBM.KW	16.3	0.77	5.35%	0.17	0.180	(0.017)	64.8	0.202	0.158	(10.0%)	40	7	0.3%	4.7%
= Equipment Holding Co.	EQUI.KW	NM	0.54	0.00%	1.38	0.026	0.000	3.5	0.034	0.025	(4.4%)	0	0	18.5%	NM
= National Co. for Consumer Industries	NCCI.KW	NM	0.33	0.00%	NA	0.030	0.000	2.7	0.084	0.035	(31.8%)	0	0	0.4%	0.3%
▼ Salbookh Trading Co.	SALB.KW	NM	0.55	0.00%	0.78	0.048	(0.001)	5.1	0.052	0.036	21.1%	579,990	27,609	28.7%	NM
▲ Agility (PWC Logistics)	AGLT.KW	16.5	1.32	1.62%	1.48	0.759	0.001	1,338.1	0.943	0.315	8.8%	306,891	231,558	5.3%	8.0%
= Educational Holding Group*	EDUK.KW	NM	2.06	4.60%	0.18	0.326	0.000	80.0	0.340	0.057	5.2%	0	0	0.5%	0.4%
▼ National Cleaning Co.	CLEA.KW	10.8	0.44	0.00%	0.96	0.063	(0.007)	15.8	0.072	0.047	10.5%	339,020	21,323	5.0%	4.0%
▼ Kuwait & Gulf Link Transport Co.	KGLK.KW	6.7	0.36	5.73%	0.97	0.083	(0.001)	23.0	0.128	0.090	(13.3%)	95,383	7,859	12.7%	5.3%
= Kuwait Co. For Process Plant Const. & Cont.	KPCP.KW	5.6	0.99	4.08%	0.33	0.237	0.000	23.8	0.260	0.159	3.0%	0	0	1.6%	17.7%
▲ Humansoft Holding Co.	HUMN.KW	13.2	6.20	5.42%	0.41	3.399	0.049	415.5	3.800	2.996	3.6%	69,215	232,159	11.0%	47.0%
= Gulf Franchising Co.	GFCI.KW	NM	0.68	0.00%	NA	0.059	0.000	2.4	0.250	0.013	(15.7%)	0	0	0.0%	NM
= National Shooting Co.	SHOOTING.KW	NM	0.21	0.00%	1.79	0.014	0.000	4.0	0.021	0.015	(10.0%)	0	0	10.2%	NM
▲ Combined Group Contracting Co.	CGCK.KW	7.4	0.81	7.34%	NA	0.231	0.001	37.7	0.457	0.295	(27.8%)	5,004	1,151	5.5%	10.9%
= Mishref General Trading & Contracting Co.	MTCC.KW	N/A	N/A	0.00%	0.89	0.056	0.000	17.2	N/A	N/A	0.0%	0	0	0.0%	N/A
▲ United Projects Group	UPAC.KW	7.1	1.31	22.34%	0.13	0.418	0.008	68.8	0.710	0.249	(34.2%)	10	4	0.4%	18.6%
▼ ALAFCO Aviation Lease & Finance Co.*	ALAF.KW	7.7	0.83	3.70%	0.41	0.270	(0.007)	257.1	0.372	0.059	(22.6%)	60,693	16,304	1.6%	10.7%
▼ Mubarrad Holding Co.	MBRD.KW	5.9	0.49	8.19%	0.85	0.060	(0.001)	9.8	0.080	0.040	(7.7%)	263,275	15,718	30.6%	8.3%
= KGL Logistics Co.	LOGK.KW	5.3	0.32	0.00%	0.82	0.043	0.000	31.2	0.046	0.040	5.2%	219,853	9,354	26.3%	6.0%
▼ Integrated holding Co.	INTEGRATED.KW	8.7	2.15	5.89%	0.31	0.679	(0.030)	149.4	0.970	0.720	(19.2%)	67,735	45,618	10.4%	24.8%
= Sharjah Cement Co.	SCEM.KW	18.0	0.37	11.11%	0.46	0.072	0.000	43.8	0.090	0.056	(17.1%)	0	0	0.1%	2.0%
= Gulf Cement Co.	GCEM.KW	NM	0.58	13.36%	0.48	0.060	0.000	49.2	0.089	0.059	(11.8%)	0	0	0.4%	NM
= Umm Al-Qaiwain General Investments Co.	QIC.KW	16.4	0.35	11.93%	0.20	0.059	0.000	21.3	0.077	0.052	(11.7%)	0	0	0.4%	2.1%
▼ Fujairah Cement Industries Co.	FCEM.KW	17.6	0.23	10.83%	0.53	0.055	(0.001)	19.7	0.077	0.055	(12.8%)	43,100	2,328	4.9%	1.3%
▲ Ras-Al-Khaimah for White Cement Co.	RKWC.KW	30.2	0.52	7.69%	0.18	0.065	0.002	32.5	0.087	0.059	(13.2%)	6,000	394	0.1%	1.7%
Industrials		13.9	1.09	4.45%				3,289.2			(3.4%)	2,838,986	893,753		7.8%

Boursa Kuwait Daily Bulletin

Monday, May 6, 2019

Company	Reuters Ticker	Valuation Multiples				Price (KWD)		MKT Cap (KWD Mn.)	52 Weeks High (KWD)	52 Weeks Low (KWD)	YTD-19 Return #	Daily Trading Data		YTD-19 Capital Turnover	ROE
		Trailing P/E (X)	Trailing P/BV (X)	Dividend Yield	Beta	Closing	DTD Change					Volume (Shrs.)	Value (KWD)		
= Palms Agro Production Co.	PAPK.KW	NM	0.28	24.96%	0.21	0.040	0.000	2.1	0.080	0.037	(33.3%)	0	0	0.6%	NM
▲ Livestock Transport & Trading Co.	CATT.KW	NM	1.11	2.41%	0.40	0.200	0.002	43.3	0.259	0.031	6.4%	21,070	4,213	0.9%	NM
▲ Danah Alsafat Foodstuff Co.	DANK.KW	NM	0.37	0.00%	0.53	0.033	0.002	4.1	0.053	0.036	(12.3%)	41,073	1,346	11.9%	NM
= Mezzan Holding Co.	MEZZ.KW	20.5	1.48	4.28%	0.62	0.505	0.000	157.2	0.771	0.431	1.0%	2,623	1,325	9.4%	7.2%
Consumer Goods		57.4	1.26	4.01%				206.7			1.2%	64,766	6,884		2.2%
= Advanced Technology Co.	ATCK.KW	22.6	2.59	2.00%	NA	1.000	0.000	150.0	1.000	0.067	0.0%	0	0	0.0%	11.5%
= Yiacco Medical Co.	YIAC.KW	NM	15.46	0.00%	0.62	0.067	0.000	12.1	0.142	0.080	(37.9%)	0	0	0.0%	NM
= Al-Maidan Clinic For Oral Health Services Co.	MIDAN.KW	54.8	8.98	0.40%	0.00	1.260	0.000	315.0	1.260	1.080	5.0%	0	0	0.0%	16.4%
Health Care		NM	5.08	0.89%				477.1			1.6%	0	0		4.8%
= Kuwait National Cinema Co.	KCIN.KW	10.9	1.22	5.63%	0.15	0.900	0.000	91.0	1.090	0.830	(15.8%)	0	0	0.1%	11.2%
= Kuwait Hotels Co.	KHOT.KW	NM	1.16	0.00%	NA	0.100	0.000	5.8	0.130	0.050	(23.1%)	0	0	0.0%	NM
▼ Sultan Center Food Products Co.	SCFK.KW	12.5	0.72	0.00%	0.69	0.054	(0.002)	31.3	0.076	0.013	2.3%	91,336	4,934	8.5%	5.8%
= Kuwait Cable Vision Co.	KWTV.KW	NM	0.95	0.00%	0.39	0.026	0.000	0.9	0.033	0.007	27.5%	0	0	1.5%	NM
= IFA Hotels & Resorts Co.*	IFAH.KW	NM	1.08	0.00%	0.16	0.070	0.000	44.4	0.110	0.054	(21.5%)	0	0	0.2%	NM
= Oula Fuel Marketing Co.	OULA.KW	12.5	0.72	41.73%	0.45	0.118	0.000	47.7	0.138	0.055	0.0%	18,101	2,128	2.0%	5.7%
= Kuwait Resorts Co.	MUNK.KW	8.6	0.42	8.85%	0.74	0.057	0.000	11.1	0.067	0.052	0.4%	0	0	36.2%	4.8%
▼ Jazeera Airways Co.	JAZK.KW	26.3	4.63	4.00%	0.28	0.876	(0.002)	175.2	0.880	0.114	20.0%	51,299	44,088	5.4%	17.6%
▲ Soor Fuel Marketing Co.	SOOR.KW	13.9	0.70	4.23%	0.39	0.117	0.001	47.4	0.139	0.108	1.7%	42,005	4,915	1.7%	5.0%
= Future Kid Entertainment and R.E Co.	KIDK.KW	10.7	0.56	12.07%	NA	0.098	0.000	11.4	0.135	0.088	3.2%	0	0	2.4%	5.2%
= Al Rai Media Group Co.	ALRA.KW	NM	0.71	NM	0.54	0.043	0.000	9.9	0.136	0.047	(30.2%)	0	0	3.4%	NM
= Jiyad Holding Co	JIYAD.KW	11.2	0.52	0.00%	0.72	0.057	0.000	19.9	0.103	0.064	(20.4%)	0	0	35.9%	4.6%
= Al Eid Food Co.	ALEID.KW	3.4	0.30	0.00%	NA	0.048	0.000	4.8	0.077	0.052	(27.0%)	0	0	1.0%	8.7%
Consumer Services		NM	1.10	8.39%				500.8			(2.1%)	202,741	56,064		NM
▼ Zain	ZAIN.KW	10.6	1.63	6.25%	1.66	0.480	(0.001)	2,077.0	0.506	0.367	6.9%	1,846,649	883,528	6.7%	15.4%
▼ National Mobile Telecom Co.	OORE.KW	11.5	0.62	7.32%	0.51	0.679	(0.002)	342.2	0.897	0.012	(4.9%)	24,100	16,374	0.5%	5.4%
▲ AAN digital services Co.	AAN.KW	NM	0.38	0.00%	1.59	0.013	0.000	11.1	0.022	0.016	(27.0%)	156,501	1,930	15.1%	NM
= Kuwait Telecommunication Co.	VIVA.KW	7.9	2.08	4.99%	0.75	0.801	0.000	400.0	0.899	0.683	0.1%	8,053	6,450	0.8%	26.3%
Telecommunications		10.3	1.38	6.18%				2,830.3			4.2%	2,035,303	908,282		13.4%
▲ National Bank of Kuwait	NBKK.KW	16.6	1.95	3.48%	1.34	0.944	0.003	6,158.6	0.967	0.270	18.8%	2,539,974	2,386,725	7.3%	11.7%
▲ Gulf Bank	GBKK.KW	16.9	1.52	3.03%	0.93	0.314	0.002	957.1	0.330	0.233	24.6%	6,052,314	1,889,224	41.6%	9.0%
▲ Commercial Bank of Kuwait	CBKK.KW	17.1	1.49	3.31%	0.73	0.546	0.040	1,087.7	0.700	0.299	20.1%	6,983	3,566	0.5%	8.7%
= Ahli Bank of Kuwait	ABKK.KW	12.7	0.91	4.21%	0.60	0.330	0.000	534.3	0.350	0.284	11.9%	914,800	301,888	0.9%	7.2%
▲ Ahli United Bank - Kuwait	BKME.KW	12.5	1.49	4.14%	0.75	0.311	0.004	641.5	0.369	0.249	9.9%	222,221	68,809	3.0%	11.9%
▲ Kuwait International Bank	KIBK.KW	14.5	1.11	3.40%	0.97	0.280	0.004	302.1	0.343	0.216	10.3%	1,638,969	457,357	27.5%	7.6%
▼ Burgan Bank	BURG.KW	10.5	1.15	3.46%	0.98	0.329	(0.002)	863.6	0.405	0.241	24.3%	44,134	14,513	10.3%	11.0%
▲ Kuwait Finance House	KFH.KW	21.0	2.52	2.63%	1.59	0.683	0.010	4,764.9	0.718	0.499	23.0%	4,256,704	2,889,245	7.2%	12.0%
▼ Boubyan Bank	BOUK.KW	29.6	4.07	1.15%	0.91	0.576	(0.004)	1,661.2	0.630	0.215	24.2%	481,516	275,798	1.9%	13.7%
▲ Warba Bank	WARB.KW	28.6	1.87	0.00%	0.88	0.243	0.001	364.5	0.265	0.205	15.7%	585,475	142,000	19.1%	6.5%
▼ Ahli United Bank - Bahrain	AUBK.KW	10.6	1.89	4.55%	0.75	0.255	(0.001)	2,237.5	0.277	0.019	38.9%	1,807,663	460,783	14.0%	17.8%
= Ithmaar Bank	ITHMR.KW	NM	1.91	0.00%	1.55	0.022	0.000	67.6	0.038	0.024	(10.8%)	0	0	4.9%	NM
Banks		16.5	1.91	3.13%				19,640.7			22.0%	18,550,753	8,889,908		11.6%

Boursa Kuwait Daily Bulletin

Monday, May 6, 2019

Company	Reuters Ticker	Valuation Multiples				Price (KWD)		MKT Cap (KWD Mn.)	52 Weeks High (KWD)	52 Weeks Low (KWD)	YTD-19 Return #	Daily Trading Data		YTD-19	
		Trailing P/E (X)	Trailing P/BV (X)	Dividend Yield	Beta	Closing	DTD Change					Volume (Shrs.)	Value (KWD)	Capital Turnover	ROE
= Kuwait Insurance Co.	KINS.KW	7.1	0.83	7.21%	0.01	0.330	0.000	64.0	0.427	0.245	(8.3%)	20,150	6,650	0.9%	11.6%
▼ Gulf Insurance Group	GINS.KW	10.0	1.34	5.41%	0.06	0.637	(0.001)	119.1	0.730	0.401	(2.7%)	2,020	1,252	0.1%	13.4%
= Ahleiah Insurance Co.	AINS.KW	8.6	0.77	8.45%	0.20	0.407	0.000	81.4	0.450	0.056	(4.7%)	0	0	1.4%	9.0%
▲ Warba Insurance Co.	WINS.KW	16.2	0.35	0.00%	0.63	0.073	0.004	12.6	0.092	0.055	10.8%	950	68	1.3%	2.2%
= Kuwait Reinsurance Co.	KWRE.KW	7.4	0.51	0.00%	0.01	0.132	0.000	24.9	0.198	0.037	(28.2%)	0	0	0.3%	6.9%
= First Takaful Insurance Co.	FTIK.KW	5.8	0.57	0.00%	0.11	0.045	0.000	4.8	0.053	0.029	1.8%	0	0	0.2%	9.7%
= Wethaq Takaful Insurance Co.	WETH.KW	39.5	0.29	0.00%	0.72	0.031	0.000	3.4	0.045	0.024	11.1%	0	0	14.8%	0.7%
= Bahrain Kuwait Insurance Co.	BKIK.KW	11.3	0.99	12.50%	0.04	0.200	0.000	28.6	0.200	0.200	0.0%	0	0	0.0%	8.8%
Insurance		8.9	0.83	6.35%				338.9			(5.9%)	23,120	7,970		9.3%
▼ Sokouk Holding Co.	SHCK.KW	NM	0.43	0.00%	1.47	0.036	(0.001)	21.1	0.052	0.038	(10.1%)	282,100	9,894	26.4%	NM
▼ Kuwait Real Estate Co.	KREK.KW	10.0	0.51	0.00%	1.38	0.071	(0.000)	67.3	0.075	0.044	36.9%	215,972	15,248	37.4%	5.1%
= United Real Estate Co.	UREK.KW	NM	0.37	0.00%	0.63	0.061	0.000	72.3	0.070	0.055	1.5%	0	0	0.3%	NM
▲ National Real Estate Co.	NREK.KW	10.2	0.43	0.00%	1.34	0.081	0.001	110.1	0.124	0.080	(11.1%)	323,146	25,934	6.0%	4.2%
= Salhia Real Estate Co.	SREK.KW	10.2	1.18	5.59%	0.31	0.345	0.000	176.9	0.350	0.324	4.5%	500	173	1.7%	11.6%
▲ Tamdeen Real Estate Co.	TAMK.KW	26.2	0.98	3.53%	0.26	0.330	0.030	142.6	0.385	0.126	(5.7%)	21,898	6,788	0.4%	3.7%
= Ajial Real Estate Entertainment Co.	AREC.KW	10.5	0.21	3.55%	0.37	0.140	0.000	25.9	0.159	0.032	3.7%	0	0	2.0%	2.0%
= Al Massaleh Real Estate Co.	MREC.KW	NM	0.41	0.00%	0.42	0.037	0.000	8.7	0.049	0.028	1.1%	0	0	2.5%	NM
▲ Arab Real Estate Co.	ARAB.KW	NM	0.28	0.00%	1.42	0.031	0.000	15.8	0.035	0.027	7.3%	307,733	9,409	11.6%	NM
▼ AL-Enma'a Real Estate Co.*	ENMA.KW	NM	0.40	0.00%	0.75	0.039	(0.003)	17.5	0.048	0.030	18.7%	2,040,003	81,893	34.3%	NM
▼ Mabaneer Co.	MABK.KW	13.1	1.62	1.71%	1.02	0.661	(0.009)	689.1	0.710	0.076	15.6%	608,555	405,507	5.0%	12.4%
▼ Injazat Real Estate Development Co.	INJA.KW	7.2	0.47	8.12%	0.51	0.084	(0.000)	29.0	0.090	0.010	(2.4%)	50,000	4,195	1.6%	6.5%
▼ Investors Holding Group Co.	INVK.KW	NM	0.29	0.00%	1.63	0.011	(0.000)	6.5	0.016	0.012	(13.9%)	8,185,687	84,439	82.7%	NM
▲ International Resorts Co.	IRCK.KW	6.7	0.35	0.00%	1.48	0.020	0.002	3.1	0.030	0.018	(9.4%)	6,486	121	1.0%	5.2%
= The Commercial Real Estate Co.	TIJK.KW	11.1	0.55	5.49%	0.81	0.092	0.000	161.3	0.098	0.030	0.0%	816	74	5.2%	4.9%
= Sanam Real Estate Co.	SANK.KW	NM	0.64	0.00%	0.48	0.050	0.000	6.0	0.063	0.026	42.7%	0	0	2.8%	NM
▼ A'ayan Real Estate Co.	AYRE.KW	4.5	0.38	7.61%	0.89	0.065	(0.000)	26.9	0.068	0.043	12.3%	232,501	15,108	9.8%	8.3%
= Aqar Real Estate Investment Co.	AQAR.KW	11.6	0.50	7.54%	NA	0.060	0.000	14.1	0.074	0.024	(2.0%)	0	0	0.4%	4.3%
▲ Kuwait Real Estate Holding Co.	ALAQ.KW	58.2	0.55	0.00%	1.14	0.032	0.001	6.1	0.035	0.020	27.6%	400	13	1.5%	0.9%
▼ MAZAYA Holding Co.	MAZA.KW	8.1	0.45	13.25%	1.41	0.060	(0.000)	41.4	0.100	0.070	(14.1%)	143,000	8,619	31.4%	5.6%
= Tijara Real Estate & Investment Co.	TIJA.KW	19.4	0.48	6.00%	0.71	0.050	0.000	18.5	0.058	0.025	2.0%	0	0	0.5%	2.5%
▲ Al TAMEER Real Estate Investment Co.	AMAR.KW	NM	0.39	0.00%	1.52	0.027	0.001	6.5	0.040	0.026	(3.6%)	387,004	10,391	93.7%	NM
= Arkan Al-Kuwait Real Estate Co. *	ARKK.KW	7.0	0.57	10.00%	0.34	0.080	0.000	20.1	0.091	0.072	(4.2%)	0	0	1.6%	8.2%
= Al-Argan International Real Estate Co.	ARGK.KW	63.9	0.40	0.00%	0.38	0.133	0.000	35.2	0.150	0.014	(2.2%)	0	0	0.0%	0.6%
▼ Abyaar Real Estate Development Co.	ABYR.KW	NM	0.18	0.00%	1.56	0.014	(0.001)	14.9	0.020	0.015	(11.2%)	1,013,434	13,873	52.3%	NM
= Munshaat Real Estate Projects Co.	MUNS.KW	NM	0.61	0.00%	1.11	0.089	0.000	28.7	0.120	0.031	(11.0%)	0	0	3.0%	NM
= First Dubai For Real Estate Development	FIRST.KW	11.0	0.44	0.00%	1.60	0.033	0.000	32.5	0.047	0.035	(13.8%)	188,673	6,076	3.2%	4.0%
= Kuwait Business Town Real Estate Co.	KBTK.KW	10.0	0.38	7.21%	1.37	0.042	0.000	24.9	0.054	0.039	(8.0%)	0	0	4.0%	3.8%
= Real Estate Asset Management Co.	REAM.KW	35.0	1.13	2.91%	0.01	0.171	0.000	17.9	1.415	0.036	(5.0%)	0	0	0.0%	3.2%
▼ MENA Real Estate Co. *	MENK.KW	NM	0.48	0.00%	0.93	0.039	(0.002)	5.3	0.050	0.019	8.1%	1,080,488	41,768	158.1%	NM
▼ Al Mudon International Real Estate Co.	ALMK.KW	NM	0.15	0.00%	1.37	0.020	(0.001)	2.0	0.032	0.024	(29.9%)	405,456	7,879	11.2%	NM
= Real Estate Trade Centers Co.	MARA.KW	NM	0.18	0.00%	1.47	0.030	0.000	4.0	0.037	0.018	35.9%	0	0	20.0%	0.1%
▼ Kuwait Remal Real Estate Co.	REMA.KW	NM	0.42	0.00%	0.00	0.032	(0.002)	9.8	0.050	0.029	(23.8%)	500,388	16,430	23.3%	NM
▼ Mashaer Holding Co.	MASHAER.KW	NM	0.58	0.00%	0.26	0.069	(0.001)	12.3	0.088	0.015	(18.2%)	35,000	2,388	116.9%	NM
▼ Effect Real Estate Co.	EFFECT.KW	NM	0.28	0.00%	0.84	0.021	(0.005)	1.7	0.025	0.009	125.3%	50,000	1,025	4.7%	NM
▲ Ajwan Gulf Real Estate Co.	AJWN.KW	NM	0.24	0.00%	0.42	0.014	0.000	2.9	0.025	0.017	(24.7%)	762,240	10,220	49.3%	NM
= Al Masaken Intl. Real Estate Dev. Co.	MASKN.KW	NM	0.83	0.00%	0.37	0.070	0.000	7.0	0.100	0.036	12.0%	0	0	0.2%	NM
= Dalqan Real Estate Co.	DALQ.KW	NM	2.79	0.00%	NA	0.350	0.000	17.5	0.350	0.179	0.0%	0	0	0.0%	2.2%
= Dar Al Thuraya Real Estate Co.	THURY.KW	32.4	1.76	0.00%	NA	0.179	0.000	26.2	0.220	0.220	(18.6%)	0	0	0.0%	5.4%
Real Estate		28.9	0.69	2.74%				1,929.6			3.6%	16,841,480	777,463		2.4%

Boursa Kuwait Daily Bulletin

Monday, May 6, 2019

Company	Reuters Ticker	Valuation Multiples				Price (KWD)		MKT Cap (KWD Mn.)	52 Weeks High (KWD)	52 Weeks Low (KWD)	YTD-19 Return #	Daily Trading Data		YTD-19	
		Trailing P/E (X)	Trailing P/BV (X)	Dividend Yield	Beta	Closing	DTD Change					Volume (Shrs.)	Value (KWD)	Capital Turnover	ROE
▲ Kuwait Investment Co.	KINV.KW	7.1	0.60	7.83%	0.62	0.127	0.002	70.0	0.139	0.103	(2.3%)	8,315	1,031	7.4%	8.4%
= Commercial Facilities Co.	FACI.KW	12.5	0.64	7.57%	0.58	0.200	0.000	107.4	0.205	0.021	14.3%	0	0	2.1%	5.1%
▲ Int'l Financial Advisors Co.	IFIN.KW	NM	0.55	0.00%	1.65	0.024	0.000	17.1	0.039	0.021	(15.7%)	581,097	13,378	23.9%	NM
= National Investment Co.	NINV.KW	13.9	0.58	5.45%	1.33	0.117	0.000	102.5	0.123	0.070	41.8%	677,150	79,791	13.6%	4.1%
= Kuwait Projects Co.(Holding)	KPRO.KW	11.9	1.22	5.39%	0.77	0.218	0.000	337.3	0.252	0.033	4.8%	0	0	3.4%	10.2%
= Coast Invest. & Development Co.	COAS.KW	17.2	0.44	0.00%	2.01	0.040	0.000	24.8	0.045	0.028	19.3%	0	0	8.7%	2.6%
▼ The Securities House Co.	SECH.KW	NM	0.58	0.00%	1.30	0.052	(0.001)	23.4	0.062	0.044	(1.7%)	2,339,053	123,919	37.5%	0.5%
▼ Arzan Financial Group For Fin. & Invest.	ARZA.KW	10.4	0.26	0.00%	1.15	0.033	(0.000)	26.3	0.038	0.025	10.1%	441,555	14,557	13.6%	2.5%
▼ Kuwait Financial Centre	MARKZ.KW	17.5	0.44	6.02%	0.67	0.083	(0.004)	39.9	0.110	0.042	(17.0%)	41,412	3,437	0.6%	2.5%
▼ Kuwait & M.E. Financial Inv. Co.	KMEF.KW	65.2	0.83	0.00%	0.74	0.048	(0.000)	12.5	0.054	0.019	48.4%	50	2	12.8%	1.3%
▲ Al-Aman Investment Co.	AMAN.KW	11.7	0.60	0.00%	0.82	0.065	0.003	9.7	0.081	0.034	32.6%	4,026,835	260,004	63.5%	5.2%
▼ First Investment Co.	OLAK.KW	NM	0.27	0.00%	0.95	0.038	(0.001)	24.4	0.045	0.016	(5.3%)	882,197	33,336	71.8%	0.3%
= Al-Mal Investment Co.	MALK.KW	NM	0.51	0.00%	1.67	0.018	0.000	5.5	0.025	0.017	(7.3%)	100,000	1,727	16.6%	NM
▼ Gulf Investment House	GIHK.KW	1.7	0.63	0.00%	1.13	0.056	(0.004)	22.8	0.083	0.014	215.7%	378,650	21,544	8.2%	35.8%
▼ A'ayan Leasing & Investment Co.	AAYA.KW	12.5	0.46	0.00%	1.38	0.047	(0.002)	37.9	0.056	0.028	24.7%	4,385,728	205,229	126.0%	3.7%
= Bayan Investment Co.	BAYK.KW	NM	0.45	0.00%	1.63	0.042	0.000	16.5	0.052	0.034	(13.0%)	11,528	458	2.7%	NM
▲ Osoul Investment Co.	OSUL.KW	15.9	0.53	9.39%	0.48	0.059	0.001	11.2	0.064	0.050	(2.3%)	1,648	97	1.3%	3.4%
▼ Kuwait Finance & Investment Co.	KFSK.KW	NM	0.33	0.00%	0.46	0.040	(0.002)	12.8	0.049	0.033	16.8%	42,520	1,698	5.9%	0.4%
= KAMCO Investment Co.	KAMC.KW	7.3	0.52	6.34%	0.14	0.071	0.000	18.7	0.091	0.062	3.0%	20	1	1.2%	7.2%
▲ National International Holding Co.	NIHK.KW	6.9	0.40	6.28%	0.94	0.074	0.003	15.9	0.081	0.053	18.5%	342,950	24,131	4.6%	5.7%
▼ UniCap Investment and Finance	UNICAP.KW	6.9	0.63	4.69%	0.71	0.064	(0.003)	15.2	0.085	0.048	(19.6%)	255,000	16,303	13.5%	9.1%
▲ Al Madar Finance & Investment Co.	MADR.KW	2.3	1.59	0.00%	0.44	0.159	0.001	34.0	0.180	0.014	(4.8%)	693,905	109,638	32.1%	69.5%
= Al-Deera Holding	DEER.KW	6.6	0.47	0.00%	1.57	0.016	0.000	3.1	0.026	0.016	(15.7%)	0	0	3.7%	7.2%
▼ Al Salam Group Holding Co.	SAGH.KW	32.1	0.32	0.00%	1.59	0.038	(0.001)	10.2	0.040	0.017	17.8%	2,965,700	112,106	32.3%	1.0%
= Ekttitab Holding Co.	EKTT.KW	NM	0.36	0.00%	1.26	0.019	0.000	5.9	0.029	0.019	(11.5%)	0	0	8.5%	NM
▼ Al Madina For Finance & Investment Co.	MADI.KW	NM	0.44	0.00%	1.23	0.020	(0.001)	8.1	0.030	0.020	(2.9%)	1,960,079	39,387	62.2%	NM
▲ NOOR Financial Investment Co.	NOOR.KW	1.5	0.67	0.00%	0.76	0.090	0.001	37.0	0.095	0.045	16.4%	9,340	827	35.5%	45.2%
▼ Tamdeen Investment Co.	TAMI.KW	13.1	0.51	4.27%	0.16	0.280	(0.020)	96.6	0.349	0.232	0.0%	71,870	20,780	0.7%	3.9%
= Kuwait Bahrain Int'l Exchange Co.	EXCH.KW	14.6	0.61	0.00%	NA	0.086	0.000	4.0	N/A	N/A	0.0%	0	0	0.0%	4.2%
▲ Kuwait Syrian Holding Co.	KSHC.KW	NM	0.52	5.56%	1.57	0.054	0.001	9.5	0.082	0.027	35.0%	5	0	39.9%	NM
▲ Asiya Capital Investment Co.	ASIYA.KW	26.5	0.41	0.00%	0.90	0.036	0.001	29.0	0.044	0.030	6.5%	21,405	761	2.8%	1.5%
▼ Gulf North Africa Holding Co.	GNAH.KW	NM	0.79	0.00%	1.70	0.054	(0.000)	8.1	0.057	0.034	10.2%	50	3	13.9%	NM
▼ Amwal International Investment Co.	AMWA.KW	15.2	0.53	0.00%	0.64	0.051	(0.006)	9.3	0.087	0.047	(17.3%)	10,000	513	0.0%	3.5%
= Alimtiq Investment Group	ALIMK.KW	7.5	0.73	5.77%	0.82	0.133	0.000	150.8	0.143	0.122	(0.7%)	203,891	27,017	8.8%	9.7%
= Tamkeen Holding Co.	TAMKE.KW	NM	0.12	0.00%	NA	0.012	0.000	0.8	0.015	0.003	19.2%	0	0	1.1%	NM
= Manazel Holding Co.	MANK.KW	NM	0.64	0.00%	1.77	0.026	0.000	11.2	0.037	0.024	5.3%	0	0	3.7%	NM
▲ National Industries Group	NIND.KW	15.5	0.87	4.42%	1.34	0.226	0.001	307.3	0.237	0.147	43.0%	3,054,706	689,131	36.4%	5.6%
▲ Warba Capital Holding Co.	WARBACAP.KW	NM	0.88	0.00%	1.21	0.088	0.002	6.3	0.089	0.019	185.9%	106,000	9,286	21.5%	NM
= Arabi Holding Group Co.	AGHC.KW	36.0	0.60	0.00%	0.27	0.089	0.000	15.4	0.092	0.060	29.1%	0	0	1.9%	1.7%
▲ Privatization Holding Co.	KPPC.KW	NM	0.42	8.26%	1.28	0.061	0.001	36.9	0.065	0.018	15.2%	501,244	29,573	17.9%	NM
= Credit Rating & Collection Co.	TAHS.KW	NM	0.67	0.00%	NA	0.023	0.000	3.8	0.024	0.018	3.1%	0	0	0.2%	NM
= Egypt Kuwait Holding Co.	EKHK.KW	18.6	3.11	4.40%	0.36	0.455	0.000	466.1	0.475	0.069	40.0%	0	0	0.2%	16.7%
▲ GFH Financial Group	GFH.KW	6.3	0.68	5.72%	1.18	0.075	0.002	276.1	0.113	0.066	(2.3%)	225,782	16,669	4.3%	10.8%
= Inovent	INOV.KW	5.4	0.55	6.26%	1.01	0.080	0.000	22.9	0.092	0.066	(0.1%)	0	0	3.7%	10.3%
= Sanad Holding Co.	SANAD.KW	NM	1.22	0.00%	0.06	0.110	0.000	48.1	0.110	0.031	10.0%	0	0	0.0%	1.4%
= Amar For Finance and Leasing Co.	AMARF.KW	NM	0.36	0.00%	0.09	0.031	0.000	6.2	0.049	0.033	(24.9%)	0	0	0.1%	NM
▲ Al-Manar Financing & Leasing Co.	ALMANAR.KW	18.7	0.37	0.00%	NA	0.039	0.001	12.1	0.075	0.000	(26.3%)	10	0	7.6%	2.0%
Financial Services		11.9	0.76	4.33%				2,570.5			22.6%	24,339,695	1,856,336		6.4%

Boursa Kuwait Daily Bulletin

Monday, May 6, 2019

Company	Reuters Ticker	Valuation Multiples				Price (KWD)		MKT Cap (KWD Mn.)	52 Weeks High (KWD)	52 Weeks Low (KWD)	YTD-19 Return #	Daily Trading Data		YTD-19 Capital Turnover	ROE
		Trailing P/E (X)	Trailing P/BV (X)	Dividend Yield	Beta	Closing	DTD Change					Volume (Shrs.)	Value (KWD)		
▲ Automated Systems Co.	ASCK.KW	19.5	0.73	15.54%	NA	0.097	0.018	9.6	0.160	0.066	(10.6%)	30	3	0.4%	3.7%
▲ Osos Holding Group Co.	OSOS.KW	8.5	0.78	9.71%	0.46	0.103	0.002	10.3	0.118	0.079	1.0%	10,000	1,030	9.6%	9.2%
▼ Hayat Communications Co.	HAYK.KW	10.1	0.28	0.00%	1.36	0.030	(0.015)	2.8	0.080	0.027	(55.6%)	2,000	68	0.1%	2.7%
Technology		11.5	0.62	10.99%				22.7			(16.7%)	12,030	1,101		5.4%

Boursa Kuwait	15.8	1.39	3.75%		33,104.3		14.1%	65,905,606	13,583,207		8.8%
----------------------	-------------	-------------	--------------	--	-----------------	--	--------------	-------------------	-------------------	--	-------------

Year-to-Date 2019 Top Movers & Most Active Stocks

YTD Top % Gainers	Close (KWD)	Percent Change
Gulf Investment House	0.056	215.7%
Warba Capital Holding Co.	0.088	185.9%
Kuwait & M.E. Financial Inv. Co.	0.048	48.4%
National Industries Group	0.226	43.0%
Sanam Real Estate Co.	0.050	42.7%

YTD Top % Losers	Close (KWD)	Percent Change
United Projects Group	0.418	(34.2%)
Al Rai Media Group Co.	0.043	(30.2%)
Al Mudon International Real Estate Co.	0.020	(29.9%)
Kuwait Reinsurance Co.	0.132	(28.2%)
Combined Group Contracting Co.	0.231	(27.8%)

YTD Most Active by Volume	Close (KWD)	Volume (Shrs.)
Gulf Bank	0.314	1,266,823,676
Ahli United Bank - Bahrain	0.255	1,232,598,833
A'ayan Leasing & Investment Co.	0.047	1,025,990,596
Abyaar Real Estate Development Co.	0.014	579,418,716
Investors Holding Group Co.	0.011	514,809,081

YTD Most Active by Value	Close (KWD)	Value (KWD)
National Bank of Kuwait	0.944	431,988,398
Gulf Bank	0.314	363,554,734
Kuwait Finance House	0.683	327,253,084
Ahli United Bank - Bahrain	0.255	302,916,354
Zain	0.480	135,749,846

* Different Fiscal Year Company