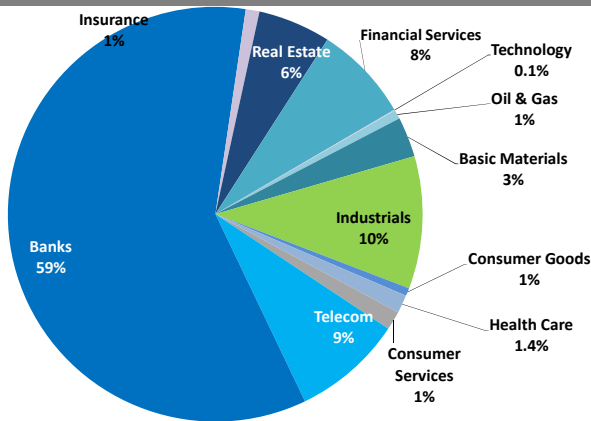


Boursa Kuwait Daily Report

April 21, 2019

Sector Weight by Market Cap



Market Capitalization - Sector Returns

	Market Cap. (KWD Mn)	DTD % Chg	MTD % Chg	YTD % Chg
Boursa Kuwait	33,353.9	▼ (0.1%)	3.7%	15.0%
Oil & Gas	233.5	▼ (1.1%)	(1.3%)	2.6%
Basic Materials	1,042.3	▼ (0.4%)	(1.4%)	1.1%
Industrials	3,440.4	▲ 0.2%	2.5%	1.1%
Consumer Goods	209.6	▼ (1.1%)	4.4%	2.7%
Health Care	472.1	= 0.0%	0.0%	0.6%
Consumer Services	488.5	▲ 0.6%	(0.6%)	(4.5%)
Telecommunications	2,860.7	▲ 0.3%	(3.3%)	5.3%
Banks	19,833.5	▼ (0.2%)	5.5%	23.2%
Insurance	355.2	▼ (1.0%)	(3.3%)	(1.4%)
Real Estate	1,889.7	▼ (0.1%)	3.3%	1.4%
Financial Services	2,500.4	▼ (0.2%)	5.0%	19.2%
Technology	28.0	▼ (3.8%)	26.1%	2.6%

Top 10 Companies by Market Capitalization

Company Name	Market Cap. (Mn KWD)	P/E (X)	ROE* (%)
1- National Bank of Kuwait	6,099.9	16.5	11.7%
2- Kuwait Finance House	4,841.7	21.3	12.0%
3- Ahli United Bank - Bahrain	2,272.6	10.7	17.8%
4- Zain	2,085.6	10.6	15.4%
5- Boubyan Bank	1,730.4	30.8	13.7%
6- Agility (PWC Logistics)	1,421.1	17.5	8.0%
7- Commercial Bank of Kuwait	1,095.6	17.2	8.7%
8- Gulf Bank	935.8	16.5	9.0%
9- Burgan Bank	884.6	10.7	11.0%
10- Ahli United Bank - Kuwait	668.3	13.0	11.9%
Total	22,036	15.76	12.2%

*: ROE is calculated based on FY2018 net profit & shareholders' equity as of 31-December-18

Top Movers and Most Active Stocks

Today's Top % Gainers	Close (KWD)	Change (KWD)	Percent Change
National Industries Co.	0.190	0.015	8.6%
United Projects Group	0.435	0.030	7.4%
Int'l Financial Advisors Co.	0.028	0.002	6.9%
Gulf Cement Co.	0.060	0.004	6.4%
Salbookh Trading Co.	0.046	0.003	6.2%

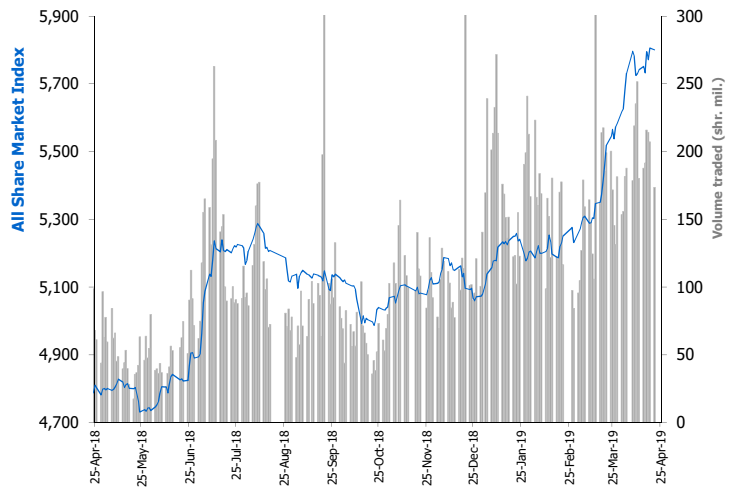
Today's Top % Losers	Close (KWD)	Change (KWD)	Percent Change
International Resorts Co.	0.024	(0.006)	(20.9%)
Umm Al-Qaiwain General Investments Co.	0.059	(0.006)	(9.8%)
Osos Holding Group Co.	0.107	(0.011)	(9.3%)
National International Holding Co.	0.073	(0.007)	(8.5%)
First Takaful Insurance Co.	0.038	(0.002)	(5.9%)

Today's Most Active by Volume	Close (KWD)	Percent Change	Volume (Shares)
Ahli United Bank - Bahrain	0.259	0.0%	16,712,445
First Investment Co.	0.043	2.4%	13,878,825
Arzan Financial Group For Fin. & Invest.	0.037	5.1%	9,007,983
National Industries Group	0.234	(0.4%)	8,290,285
Int'l Financial Advisors Co.	0.028	6.9%	7,799,482

Source: Boursa Kuwait, KAMCO Research

Market Breadth	47	62	67
Benchmark Return	Closing Value	DTD Chg	MTD % Chg
Premier Market Index	6,248.96	4.20	4.4%
Main Market Index	4,936.42	(25.78)	0.4%
All Share Market Index	5,800.53	(5.46)	3.3%
Market Cap (KWD Mn)	33,353.95	(41.13)	3.7%

Index Performance relative to Volume



Market Trading Data and Volatility

Trading Indicators	Today's Value	DTD Chg	DTD % Chg	Average Daily YTD 2019	YTD 2018
Volume (Shrs Mn)	173.7	(33.5)	(16.2%)	174.3	83.2
Value Traded (KWD Mn)	28.7	(13.9)	(32.7%)	32.7	12.3
No. of Trades	6,162	(1,619)	(20.8%)	5,880	3,325

Today's Most Active by Value	Close (KWD)	Percent Change	Value (KWD)
Kuwait Finance House	0.694	1.0%	4,407,412
Ahli United Bank - Bahrain	0.259	0.0%	4,340,592
National Bank of Kuwait	0.935	(0.5%)	2,743,498
National Industries Group	0.234	(0.4%)	1,948,326
Gulf Bank	0.307	(0.6%)	1,809,447

Boursa Kuwait - Premier Market

Sunday, April 21, 2019

Premier Market Stocks	Closing Price			Market Capitalization			Valuation Multiples				ROE	YTD-19 Price Return	YTD-19 Trading Indicators	
	KWD	DTD Chg. (KWD)	D-T-D Return	KWD Mn	Weight in Premier Index	Weight in Boursa Kuwait	P/E (X)	P/BV (X)	Yield	Beta			Volume (Mn Shrs)	Value (KWD Mn)
▼ National Bank of Kuwait	0.935	(0.005)	(0.5%)	6,100	25.3%	18.3%	16.5	1.93	3.5%	1.34	11.7%	17.7%	438.27	395.20
▼ Gulf Bank	0.307	(0.002)	(0.6%)	936	3.9%	2.8%	16.5	1.49	3.1%	0.93	9.0%	21.8%	1,196.83	342.13
▼ Kuwait International Bank	0.298	(0.010)	(3.2%)	321	1.3%	1.0%	15.4	1.18	3.2%	0.96	7.6%	17.4%	270.55	81.37
▼ Burgan Bank	0.337	(0.003)	(0.9%)	885	3.7%	2.7%	10.7	1.18	3.4%	0.98	11.0%	27.3%	266.29	86.71
▲ Kuwait Finance House	0.694	0.007	1.0%	4,842	20.1%	14.5%	21.3	2.56	2.6%	1.59	12.0%	24.9%	452.80	292.45
= Boubyan Bank	0.600	0.000	0.0%	1,730	7.2%	5.2%	30.8	4.24	1.1%	0.90	13.7%	29.4%	47.67	27.89
= Kuwait Projects Co. (Holding)	0.227	0.000	0.0%	351	1.5%	1.1%	12.4	1.27	4.3%	0.76	10.2%	9.1%	52.16	10.87
▲ Mabane Co.	0.616	0.001	0.2%	642	2.7%	1.9%	12.2	1.51	1.8%	1.02	12.4%	7.7%	35.72	22.13
▼ National Industries Group (Holding)	0.234	(0.001)	(0.4%)	318	1.3%	1.0%	16.0	0.90	4.3%	1.34	5.6%	48.1%	447.08	86.87
▼ Boubyan Petrochemical Co.	0.927	(0.003)	(0.3%)	496	2.1%	1.5%	NM	1.71	4.7%	0.75	1.9%	(4.9%)	20.66	19.56
▼ Qurain Petrochemicals Industries Co.	0.383	(0.001)	(0.3%)	421	1.7%	1.3%	12.0	1.09	3.5%	0.71	9.1%	6.4%	29.18	11.12
▼ Agility Public Warehousing Co.	0.927	(0.005)	(0.5%)	1,421	5.9%	4.3%	17.5	1.40	1.5%	1.46	8.0%	15.6%	78.35	65.43
▲ Mobile Telecommunications Co.	0.482	0.003	0.6%	2,086	8.7%	6.3%	10.6	1.63	6.2%	1.66	15.4%	7.3%	264.19	123.19
▲ Human Soft Holding Co.	3.300	0.100	3.1%	403	1.7%	1.2%	12.8	6.02	5.6%	0.41	47.0%	0.6%	12.31	39.33
= GFH Financial Group (B.S.C)	0.079	0.000	0.0%	178	0.7%	0.5%	4.0	0.44	8.9%	1.18	10.8%	2.5%	148.63	11.51
= Ahli United Bank (B.S.C)	0.259	0.000	0.0%	2,273	9.4%	6.8%	10.7	1.92	4.5%	0.75	17.8%	41.0%	1,180.82	289.75
= Warba Bank	0.253	0.000	0.0%	380	1.6%	1.1%	29.8	1.95	0.0%	0.88	6.5%	20.5%	266.76	61.58
▲ Mezzan Holding Co.	0.523	0.005	1.0%	163	0.7%	0.5%	21.2	1.54	4.1%	0.61	7.2%	4.6%	28.93	13.32
▲ Integrated Holding Co.	0.729	0.004	0.6%	160	0.7%	0.5%	9.3	2.31	0.0%	0.36	24.8%	(13.2%)	21.45	16.37
Subtotal- Premier Market Stocks	5,800.53	(5.46)	-0.09%	24,105	100%	72%	15.5	1.83	3.34%		11.8%	14.2%	5,258.64	1,996.77
Remaining of the Market				9,249		28%	17.5	0.88	6.45%		5.0%		7,642.50	425.02

Boursa Kuwait Daily Bulletin

Sunday, April 21, 2019

Company	Reuters Ticker	Valuation Multiples				Price (KWD)		MKT Cap (KWD Mn.)	52 Weeks High (KWD)	52 Weeks Low (KWD)	YTD-19 Return #	Daily Trading Data		YTD-19	
		Trailing P/E (X)	Trailing P/BV (X)	Dividend Yield	Beta	Closing	DTD Change					Volume (Shrs.)	Value (KWD)	Capital Turnover	ROE
▲ Senergy Holding Co.	SENE.KW	NM	0.39	0.00%	1.42	0.029	0.000	5.8	0.037	0.025	(6.5%)	36,800	1,015	2.3%	NM
▲ Independent Petroleum Group	IPGK.KW	9.9	0.64	7.14%	0.32	0.399	0.004	60.7	0.450	0.379	(0.5%)	25,000	9,960	2.3%	6.5%
▼ National Petroleum Services Co.	NAPS.KW	8.5	2.76	6.79%	0.19	1.000	(0.029)	100.0	1.170	0.708	8.7%	1,963	1,964	0.5%	32.6%
▼ The Energy House Co.	ENER.KW	NM	1.15	0.00%	0.84	0.036	(0.001)	27.0	0.051	0.024	(0.8%)	218,150	7,869	2.0%	0.3%
▲ Gulf Petroleum Investment	GPIK.KW	NM	0.43	0.00%	1.25	0.030	0.000	18.1	0.033	0.022	0.0%	1,930,693	56,868	75.4%	NM
= Burgan Co. for Drilling, Tdg. & Maint. *	ABAR.KW	8.0	0.34	0.00%	NA	0.090	0.000	21.8	0.123	0.072	(5.3%)	0	0	0.4%	4.3%
Oil & Gas		13.3	0.85	4.77%				233.5			2.6%	2,212,606	77,675		6.4%
▼ Kuwait Foundry Co.	KFDC.KW	35.4	0.96	11.32%	0.45	0.265	(0.009)	40.8	0.289	0.175	38.7%	34,011	9,076	11.9%	2.7%
▼ Boubyan Petrochemicals Co.*	BPCC.KW	NM	1.71	4.72%	0.75	0.927	(0.003)	495.8	1.090	0.780	(4.9%)	415,694	385,403	3.9%	1.9%
= Al Kout for Industrial Projects Co.	ALKK.KW	13.5	2.72	5.95%	0.05	0.840	0.000	84.8	0.840	0.362	0.0%	0	0	0.0%	20.2%
▼ Qurain Petrochemical Industries Co. *	ALQK.KW	12.0	1.09	3.46%	0.71	0.383	(0.001)	421.0	0.415	0.321	6.4%	78,179	29,955	2.7%	9.1%
Basic Materials		21.7	1.39	4.57%				1,042.3			1.1%	527,884	424,434		6.4%
▼ Specialities Group Holding Co.	SPEC.KW	7.8	0.42	0.00%	0.34	0.078	(0.002)	11.7	0.082	0.053	14.2%	536,775	42,412	9.5%	5.4%
= Kuwait Cement Co.	KCEM.KW	29.1	1.20	6.17%	0.48	0.315	0.000	231.0	0.461	0.327	(16.9%)	60,130	19,241	0.3%	4.1%
▼ Gulf Cable & Electrical Ind. Co.	CABL.KW	9.6	0.53	6.99%	1.03	0.386	(0.006)	81.0	0.420	0.346	10.0%	80,550	31,147	5.2%	5.5%
▲ Heavy Eng'g Ind. & Shipbuilding Co.	SHIP.KW	7.5	1.29	4.98%	0.49	0.402	0.003	72.5	0.538	0.288	(6.9%)	38,973	15,623	12.9%	17.2%
▲ Kuwait Portland Cement Co.	PCEM.KW	14.2	2.14	6.17%	0.54	1.459	0.004	146.2	1.459	0.165	28.2%	7,862	11,130	5.6%	15.1%
= Shuaiba Industrial Co.	PAPE.KW	16.6	0.90	10.15%	0.20	0.165	0.000	16.6	0.249	0.151	(12.2%)	0	0	0.1%	5.4%
= Metal & Recycling Co.	MRCK.KW	NM	0.19	0.00%	0.70	0.030	0.000	2.5	0.075	0.012	(52.2%)	0	0	0.1%	NM
▲ ACICO Industries Co.	ACIC.KW	22.2	0.50	3.14%	0.45	0.151	0.001	50.3	0.260	0.150	(5.1%)	9,970	1,505	2.9%	2.3%
= Hilal Cement Co.	HCKK.KW	NM	1.02	0.00%	0.15	0.139	0.000	14.1	0.139	0.067	24.1%	40,000	5,560	0.7%	NM
▲ National Industries Co.	NIBM.KW	16.7	0.79	5.25%	0.16	0.190	0.015	66.1	0.202	0.144	(5.0%)	5,013	952	0.3%	4.7%
▲ Equipment Holding Co.	EQUI.KW	NM	0.58	0.00%	1.39	0.028	0.000	3.8	0.034	0.025	3.3%	230,000	6,417	18.1%	NM
= National Co. for Consumer Industries	NCCI.KW	NM	0.33	0.00%	NA	0.030	0.000	2.7	0.084	0.035	(31.8%)	63,073	1,892	0.4%	0.3%
▲ Salbookh Trading Co.	SALB.KW	NM	0.52	0.00%	0.79	0.046	0.003	4.8	0.052	0.036	15.3%	865,450	39,792	21.0%	NM
▼ Agility (PWC Logistics)	AGLT.KW	17.5	1.40	1.53%	1.46	0.927	(0.005)	1,421.1	0.943	0.315	15.6%	890,825	826,571	5.1%	8.0%
= Educational Holding Group*	EDUK.KW	NM	1.99	4.76%	0.18	0.315	0.000	77.3	0.340	0.057	1.6%	0	0	0.5%	0.4%
▲ National Cleaning Co.	CLEA.KW	12.0	0.48	0.00%	0.98	0.070	0.000	17.5	0.071	0.047	22.0%	168,876	11,618	4.7%	4.0%
▲ Kuwait & Gulf Link Transport Co.	KGLK.KW	6.6	0.35	5.81%	0.98	0.086	0.000	22.7	0.130	0.090	(10.1%)	615,853	52,881	13.0%	5.3%
▼ Kuwait Co. For Process Plant Const. & Cont.	KPCP.KW	5.5	0.98	4.15%	0.33	0.233	(0.001)	23.4	0.260	0.159	1.3%	70,002	16,371	1.5%	17.7%
▲ Humansoft Holding Co.	HUMN.KW	12.8	6.02	5.58%	0.41	3.300	0.100	403.4	3.980	2.996	0.6%	366,262	1,185,588	10.1%	47.0%
= Gulf Franchising Co.	GFCI.KW	NM	1.14	0.00%	NA	0.099	0.000	4.0	0.250	0.013	41.4%	0	0	0.0%	NM
▲ National Shooting Co.	SHOOTING.KW	NM	0.22	0.00%	1.79	0.015	0.000	4.3	0.021	0.015	(4.4%)	151,481	2,283	9.4%	NM
▼ Combined Group Contracting Co.	CGCK.KW	7.8	0.86	6.92%	NA	0.245	(0.005)	40.0	0.457	0.295	(23.4%)	159,300	39,220	4.7%	10.9%
= Mishref General Trading & Contracting Co.	MTCC.KW	N/A	N/A	0.00%	0.89	0.056	0.000	17.2	N/A	N/A	0.0%	0	0	0.0%	N/A
▲ United Projects Group	UPAC.KW	7.4	1.37	21.46%	0.15	0.435	0.030	71.6	0.740	0.249	(31.5%)	36,473	15,307	0.4%	18.6%
▼ ALAFCO Aviation Lease & Finance Co.*	ALAF.KW	7.7	0.82	3.73%	0.42	0.268	(0.007)	255.2	0.372	0.072	(23.2%)	64,912	17,581	1.5%	10.7%
▼ Mubarrad Holding Co.	MBRD.KW	7.6	0.63	6.38%	0.84	0.077	(0.002)	12.6	0.080	0.040	18.5%	2,243,372	174,470	28.9%	8.3%
▼ KGL Logistics Co.	LOGK.KW	5.2	0.32	0.00%	0.83	0.042	(0.000)	31.0	0.051	0.040	4.5%	1,323,056	55,894	24.9%	6.0%
▲ Integrated holding Co.	INTEGRATED.KW	9.3	2.31	0.00%	0.36	0.729	0.004	160.4	0.970	0.720	(13.2%)	295,213	214,091	9.8%	24.8%
= Sharjah Cement Co.	SCEM.KW	20.0	0.41	10.00%	0.45	0.080	0.000	48.7	0.090	0.056	(7.9%)	0	0	0.1%	2.0%
▲ Gulf Cement Co.	GCEM.KW	NM	0.58	13.33%	0.53	0.060	0.004	49.3	0.090	0.059	(11.6%)	100	6	0.4%	NM
▼ Umm Al-Qaiwain General Investments Co.	QIC.KW	16.4	0.35	11.93%	0.20	0.059	(0.006)	21.3	0.077	0.052	(11.7%)	69	4	0.4%	2.1%
= Fujairah Cement Industries Co.	FCEM.KW	18.1	0.24	10.53%	0.53	0.057	0.000	20.3	0.077	0.055	(10.2%)	27,500	1,569	4.7%	1.3%
= Ras-Al-Khaimah for White Cement Co.	RKWC.KW	33.5	0.58	6.94%	0.20	0.072	0.000	36.0	0.087	0.059	(3.9%)	0	0	0.1%	1.7%
Industrials		14.5	1.14	3.97%				3,440.4			1.1%	8,351,090	2,789,125		7.8%

Boursa Kuwait Daily Bulletin

Sunday, April 21, 2019

Company	Reuters Ticker	Valuation Multiples				Price (KWD)		MKT Cap (KWD Mn.)	52 Weeks High (KWD)	52 Weeks Low (KWD)	YTD-19 Return #	Daily Trading Data		YTD-19	
		Trailing P/E (X)	Trailing P/BV (X)	Dividend Yield	Beta	Closing	DTD Change					Volume (Shrs.)	Value (KWD)	Capital Turnover	ROE
▼ Palms Agro Production Co.	PAPK.KW	NM	0.28	24.96%	0.21	0.040	(0.029)	2.1	0.080	0.025	(33.3%)	7,777	311	0.6%	NM
▼ Livestock Transport & Trading Co.	CATT.KW	NM	1.04	2.58%	0.42	0.187	(0.011)	40.5	0.259	0.032	(0.5%)	5,510	1,030	0.8%	NM
▼ Danah Alsafat Foodstuff Co.	DANK.KW	NM	0.38	0.00%	0.52	0.035	(0.000)	4.2	0.053	0.036	(9.4%)	873,176	30,116	9.6%	NM
▲ Mezzan Holding Co.	MEZZ.KW	21.2	1.54	4.13%	0.61	0.523	0.005	162.8	0.771	0.431	4.6%	10,527	5,506	9.3%	7.2%
Consumer Goods		58.3	1.28	3.96%				209.6			2.7%	896,990	36,963		2.2%
= Advanced Technology Co.	ATCK.KW	22.6	2.59	2.00%	NA	1.000	0.000	150.0	1.000	0.067	0.0%	0	0	0.0%	11.5%
= Yiacco Medical Co.	YIAC.KW	NM	15.46	0.00%	0.63	0.067	0.000	12.1	0.142	0.080	(37.9%)	0	0	0.0%	NM
= Al-Maidan Clinic For Oral Health Services Co.	MIDAN.KW	53.9	8.83	0.40%	0.00	1.240	0.000	310.0	1.240	1.080	3.3%	0	0	0.0%	16.4%
Health Care		NM	5.03	0.90%				472.1			0.6%	0	0		4.8%
= Kuwait National Cinema Co.	KCIN.KW	11.0	1.23	5.57%	0.15	0.910	0.000	92.0	1.099	0.830	(14.9%)	0	0	0.0%	11.2%
= Kuwait Hotels Co.	KHOT.KW	NM	1.16	0.00%	NA	0.100	0.000	5.8	0.130	0.050	(23.1%)	0	0	0.0%	NM
= Sultan Center Food Products Co.	SCFK.KW	13.9	0.80	0.00%	0.70	0.060	0.000	34.7	0.091	0.013	13.6%	814,406	48,974	8.0%	5.8%
▲ Kuwait Cable Vision Co.	KWTV.KW	NM	1.11	0.00%	0.37	0.030	0.006	1.1	0.033	0.006	49.5%	21,500	640	1.4%	NM
= IFA Hotels & Resorts Co.*	IFAH.KW	NM	0.96	0.00%	0.16	0.062	0.000	39.4	0.110	0.054	(30.3%)	100	6	0.2%	NM
= Oula Fuel Marketing Co.	OULA.KW	12.4	0.71	42.09%	0.44	0.117	0.000	47.3	0.138	0.055	(0.8%)	50,211	5,874	1.8%	5.7%
▼ Kuwait Resorts Co.	MUNK.KW	8.6	0.42	8.83%	0.75	0.057	(0.001)	11.1	0.067	0.052	0.5%	999,654	56,795	35.9%	4.8%
▲ Jazeera Airways Co.	JAZK.KW	24.0	4.23	4.37%	0.28	0.800	0.010	160.0	0.820	0.114	9.6%	19,000	15,026	4.9%	17.6%
= Soor Fuel Marketing Co.	SOOR.KW	14.1	0.71	4.16%	0.39	0.119	0.000	48.2	0.139	0.108	3.5%	155,735	18,537	1.4%	5.0%
▼ Future Kid Entertainment and R.E Co.	KIDK.KW	12.4	0.65	10.38%	NA	0.114	(0.001)	13.3	0.135	0.088	20.0%	22,510	2,341	2.2%	5.2%
▲ Al Rai Media Group Co.	ALRA.KW	NM	0.77	NM	0.54	0.046	0.002	10.7	0.138	0.047	(24.9%)	85,600	3,688	3.3%	NM
▲ Jiyad Holding Co	JIYAD.KW	11.9	0.55	0.00%	0.72	0.060	0.001	21.1	0.104	0.064	(15.7%)	2,221,542	133,027	34.8%	4.6%
= Al Eid Food Co.	ALEID.KW	2.7	0.24	0.00%	NA	0.039	0.000	3.9	0.077	0.052	(41.4%)	0	0	0.6%	8.7%
Consumer Services		NM	1.08	8.60%				488.5			(4.5%)	4,390,258	284,907		NM
▲ Zain	ZAIN.KW	10.6	1.63	6.22%	1.66	0.482	0.003	2,085.6	0.506	0.367	7.3%	2,413,401	1,161,249	6.1%	15.4%
▼ National Mobile Telecom Co.	OORE.KW	11.7	0.63	7.21%	0.52	0.690	(0.008)	347.8	0.904	0.013	(3.4%)	55,095	37,914	0.5%	5.4%
▼ AAN digital services Co.	AAN.KW	NM	0.43	0.00%	1.60	0.014	(0.000)	12.3	0.023	0.016	(19.0%)	155,000	2,201	12.0%	NM
▼ Kuwait Telecommunication Co.	VIVA.KW	8.2	2.16	48.13%	0.76	0.831	(0.001)	415.0	0.899	0.683	3.9%	27,776	23,067	0.7%	26.3%
Telecommunications		10.4	1.39	12.40%				2,860.7			5.3%	2,651,272	1,224,432		13.4%
▼ National Bank of Kuwait	NBKK.KW	16.5	1.93	3.51%	1.34	0.935	(0.005)	6,099.9	0.967	0.270	17.7%	2,915,218	2,743,498	6.7%	11.7%
▼ Gulf Bank	GBKK.KW	16.5	1.49	3.10%	0.93	0.307	(0.002)	935.8	0.330	0.233	21.8%	5,889,377	1,809,447	39.3%	9.0%
▼ Commercial Bank of Kuwait	CBKK.KW	17.2	1.50	3.29%	0.74	0.550	(0.015)	1,095.6	0.700	0.299	21.0%	48,206	25,059	0.5%	8.7%
= Ahli Bank of Kuwait	ABKK.KW	12.7	0.92	4.20%	0.59	0.331	0.000	535.9	0.355	0.284	12.2%	0	0	0.8%	7.2%
▼ Ahli United Bank - Kuwait	BKME.KW	13.0	1.55	3.97%	0.75	0.324	(0.001)	668.3	0.369	0.249	14.5%	839,680	272,996	2.7%	11.9%
▼ Kuwait International Bank	KIBK.KW	15.4	1.18	3.19%	0.96	0.298	(0.010)	321.5	0.343	0.216	17.4%	4,101,253	1,232,488	25.1%	7.6%
▼ Burgan Bank	BURG.KW	10.7	1.18	3.38%	0.98	0.337	(0.003)	884.6	0.405	0.241	27.3%	1,219,519	412,691	10.1%	11.0%
▲ Kuwait Finance House	KFH.KW	21.3	2.56	2.59%	1.59	0.694	0.007	4,841.7	0.718	0.499	24.9%	6,367,369	4,407,412	6.5%	12.0%
= Boubyan Bank	BOUK.KW	30.8	4.24	1.10%	0.90	0.600	0.000	1,730.4	0.630	0.215	29.4%	648,081	388,891	1.7%	13.7%
= Warba Bank	WARB.KW	29.8	1.95	0.00%	0.88	0.253	0.000	379.5	0.265	0.205	20.5%	2,467,608	624,834	17.8%	6.5%
= Ahli United Bank - Bahrain	AUBK.KW	10.7	1.92	4.48%	0.75	0.259	0.000	2,272.6	0.277	0.019	41.0%	16,712,445	4,340,592	13.5%	17.8%
= Ithmaar Bank	ITHMR.KW	NM	1.91	0.00%	1.56	0.022	0.000	67.6	0.038	0.024	(10.8%)	0	0	4.9%	NM
Banks		16.7	1.93	3.10%				19,833.5			23.2%	41,208,756	16,257,909		11.6%

Boursa Kuwait Daily Bulletin

Sunday, April 21, 2019

Company	Reuters Ticker	Valuation Multiples				Price (KWD)		MKT Cap (KWD Mn.)	52 Weeks High (KWD)	52 Weeks Low (KWD)	YTD-19 Return #	Daily Trading Data		YTD-19	
		Trailing P/E (X)	Trailing P/BV (X)	Dividend Yield	Beta	Closing	DTD Change					Volume (Shrs.)	Value (KWD)	Capital Turnover	ROE
= Kuwait Insurance Co.	KINS.KW	9.2	1.06	5.62%	0.03	0.424	0.000	82.3	0.427	0.245	17.8%	0	0	0.9%	11.6%
▼ Gulf Insurance Group	GINS.KW	10.0	1.33	5.43%	0.05	0.635	(0.005)	118.8	0.730	0.401	(3.1%)	2,546	1,621	0.1%	13.4%
▼ Ahleiah Insurance Co.	AINS.KW	8.6	0.77	8.47%	0.20	0.406	(0.014)	81.2	0.450	0.056	(4.9%)	810	335	1.4%	9.0%
▲ Warba Insurance Co.	WINS.KW	15.3	0.33	0.00%	0.61	0.069	0.003	11.9	0.092	0.055	4.5%	20,000	1,380	1.2%	2.2%
= Kuwait Reinsurance Co.	KWRE.KW	7.4	0.51	0.00%	0.01	0.140	0.000	24.9	0.198	0.037	(28.2%)	0	0	0.3%	6.9%
▼ First Takaful Insurance Co.	FTIK.KW	4.9	0.48	0.00%	0.13	0.038	(0.002)	4.1	0.053	0.029	(13.6%)	10	0	0.2%	9.7%
= Wethaq Takaful Insurance Co.	WETH.KW	39.5	0.29	0.00%	0.72	0.031	0.000	3.4	0.045	0.024	11.1%	0	0	14.7%	0.7%
= Bahrain Kuwait Insurance Co.	BKIK.KW	11.3	0.99	12.50%	0.05	0.200	0.000	28.6	0.200	0.200	0.0%	0	0	0.0%	8.8%
Insurance		9.4	0.87	6.06%				355.2			(1.4%)	23,366	3,336		9.3%
▼ Sokouk Holding Co.	SHCK.KW	NM	0.45	0.00%	1.48	0.037	(0.000)	22.1	0.052	0.038	(5.8%)	1,487,000	55,414	25.8%	NM
▲ Kuwait Real Estate Co.	KREK.KW	10.0	0.51	0.00%	1.39	0.072	0.000	67.7	0.073	0.044	37.8%	3,259,840	230,244	34.6%	5.1%
▼ United Real Estate Co.	UREK.KW	NM	0.36	0.00%	0.63	0.059	(0.001)	70.2	0.070	0.055	(1.5%)	67,127	3,979	0.3%	NM
▼ National Real Estate Co.	NREK.KW	10.3	0.43	0.00%	1.34	0.082	(0.002)	111.0	0.124	0.080	(10.4%)	1,307,523	107,004	5.4%	4.2%
▼ Salhia Real Estate Co.	SREK.KW	9.7	1.12	5.91%	0.31	0.326	(0.004)	167.1	0.349	0.324	(1.2%)	114,999	37,480	1.6%	11.6%
▲ Tamdeen Real Estate Co.	TAMK.KW	24.6	0.92	3.76%	0.25	0.310	0.010	133.9	0.385	0.126	(11.4%)	1,000	310	0.4%	3.7%
= Ajial Real Estate Entertainment Co.	AREC.KW	9.8	0.20	3.83%	0.38	0.130	0.000	24.1	0.159	0.032	(3.7%)	0	0	1.7%	2.0%
= Al Massaleh Real Estate Co.	MREC.KW	NM	0.41	0.00%	0.42	0.037	0.000	8.7	0.049	0.028	1.1%	0	0	2.5%	NM
▲ Arab Real Estate Co.	ARAB.KW	NM	0.31	0.00%	1.42	0.034	0.001	17.3	0.035	0.027	18.1%	2,070,036	70,294	11.1%	NM
▼ AL-Enma'a Real Estate Co.*	ENMA.KW	NM	0.45	0.00%	0.74	0.044	(0.002)	19.9	0.048	0.030	34.9%	2,603,962	116,359	30.5%	NM
▲ Mabaneec Co.	MABK.KW	12.2	1.51	1.83%	1.02	0.616	0.001	642.2	0.710	0.076	7.7%	120,680	74,334	3.4%	12.4%
= Injazzat Real Estate Development Co.	INJA.KW	7.2	0.47	8.12%	0.52	0.084	0.000	29.0	0.090	0.010	(2.3%)	0	0	1.5%	6.5%
= Investors Holding Group Co.	INVK.KW	NM	0.29	0.00%	1.63	0.011	0.000	6.6	0.016	0.012	(13.1%)	1,023,500	10,857	64.9%	NM
▼ International Resorts Co.	IRCK.KW	7.9	0.41	0.00%	1.52	0.024	(0.006)	3.7	0.030	0.018	6.3%	86,210	1,974	1.0%	5.2%
= The Commercial Real Estate Co.	TIJK.KW	11.7	0.58	5.22%	0.80	0.095	0.000	169.8	0.098	0.030	3.3%	93,310	8,785	4.9%	4.9%
= Sanam Real Estate Co.	SANK.KW	NM	0.48	0.00%	0.49	0.038	0.000	4.6	0.063	0.026	8.4%	0	0	2.8%	NM
▲ A'ayan Real Estate Co.	AYRE.KW	4.7	0.39	0.00%	0.90	0.067	0.000	27.8	0.068	0.043	16.3%	940,365	63,089	9.2%	8.3%
= Aqar Real Estate Investment Co.	AQAR.KW	11.4	0.49	7.66%	NA	0.059	0.000	13.8	0.074	0.024	(3.4%)	0	0	0.4%	4.3%
= Kuwait Real Estate Holding Co.	ALAQ.KW	56.4	0.54	0.00%	1.12	0.031	0.000	5.9	0.035	0.020	23.6%	332,200	9,470	0.9%	0.9%
▼ MAZAYA Holding Co.	MAZA.KW	8.6	0.48	12.47%	1.41	0.064	(0.001)	44.0	0.103	0.070	(8.7%)	2,584,677	166,167	30.1%	5.6%
= Tijara Real Estate & Investment Co.	TIJA.KW	19.8	0.49	5.88%	0.71	0.051	0.000	18.9	0.058	0.025	4.1%	4,629	236	0.5%	2.5%
▲ Al TAMEER Real Estate Investment Co.	AMAR.KW	NM	0.49	0.00%	1.54	0.034	0.001	8.2	0.040	0.025	21.8%	5,375,255	183,449	71.3%	NM
▲ Arkan Al-Kuwait Real Estate Co. *	ARKK.KW	6.8	0.56	10.26%	0.35	0.078	0.003	19.6	0.091	0.072	(6.6%)	50,000	3,885	1.6%	8.2%
= Al-Argan International Real Estate Co.	ARGK.KW	63.9	0.40	0.00%	0.38	0.133	0.000	35.2	0.150	0.014	(2.2%)	0	0	0.0%	0.6%
▼ Abyaar Real Estate Development Co.	ABYR.KW	NM	0.19	0.00%	1.57	0.014	(0.000)	15.8	0.021	0.015	(5.9%)	1,523,350	21,936	50.3%	NM
= Munshaat Real Estate Projects Co.	MUNS.KW	NM	0.61	0.00%	1.12	0.088	0.000	28.3	0.120	0.031	(12.0%)	0	0	2.7%	NM
▲ First Dubai For Real Estate Development	FIRST.KW	12.4	0.49	0.00%	1.61	0.036	0.000	36.4	0.047	0.035	(3.4%)	14,125	504	3.0%	4.0%
▼ Kuwait Business Town Real Estate Co.	KBTK.KW	10.6	0.40	6.79%	1.38	0.044	(0.001)	26.4	0.054	0.039	(2.2%)	260,300	11,581	3.8%	3.8%
= Real Estate Asset Management Co.	REAM.KW	35.0	1.13	2.91%	0.01	0.171	0.000	17.9	1.415	0.036	(5.0%)	0	0	0.0%	3.2%
▲ MENA Real Estate Co. *	MENK.KW	NM	0.50	0.00%	0.95	0.040	0.001	5.5	0.060	0.023	12.1%	1,236,491	48,707	146.9%	NM
▼ Al Mudon International Real Estate Co.	ALMK.KW	NM	0.17	0.00%	1.37	0.024	(0.000)	2.4	0.032	0.024	(17.0%)	157,200	3,623	9.2%	NM
▼ Real Estate Trade Centers Co.	MARA.KW	NM	0.18	0.00%	0.48	0.030	(0.000)	4.0	0.037	0.018	35.0%	60,400	1,632	19.6%	0.1%
▲ Kuwait Remal Real Estate Co.	REMA.KW	NM	0.52	0.00%	1.00	0.039	0.000	12.0	0.050	0.029	(6.9%)	235,010	9,189	21.1%	NM
▼ Mashaer Holding Co.	MASHAER.KW	NM	0.61	0.00%	0.26	0.072	(0.002)	12.9	0.088	0.015	(14.2%)	558,050	40,341	114.5%	NM
▲ Effect Real Estate Co.	EFFECT.KW	NM	0.25	0.00%	0.87	0.019	0.001	1.5	0.023	0.009	103.3%	140,907	2,589	3.9%	NM
▼ Ajwan Gulf Real Estate Co.	AJWN.KW	NM	0.26	0.00%	0.41	0.015	(0.000)	3.1	0.025	0.017	(18.1%)	1,138,366	17,005	46.1%	NM
= Al Masaken Intl. Real Estate Dev. Co.	MASKN.KW	NM	0.78	0.00%	0.38	0.066	0.000	6.6	0.100	0.036	5.6%	0	0	0.2%	NM
= Dalqan Real Estate Co.	DALQ.KW	NM	3.06	0.00%	NA	0.350	0.000	19.3	0.350	0.179	0.0%	0	0	0.0%	2.2%
= Dar Al Thuraya Real Estate Co.	THURY.KW	32.4	1.76	0.00%	NA	0.179	0.000	26.2	0.220	0.220	(18.6%)	0	0	0.0%	5.4%
Real Estate		28.3	0.67	2.69%				1,889.7			1.4%	26,846,512	1,300,439		2.4%

Boursa Kuwait Daily Bulletin

Sunday, April 21, 2019

Company	Reuters Ticker	Valuation Multiples				Price (KWD)		MKT Cap (KWD Mn.)	52 Weeks High (KWD)	52 Weeks Low (KWD)	YTD-19 Return #	Daily Trading Data		YTD-19	
		Trailing P/E (X)	Trailing P/BV (X)	Dividend Yield	Beta	Closing	DTD Change					Volume (Shrs.)	Value (KWD)	Capital Turnover	ROE
▼ Kuwait Investment Co.	KINV.KW	7.2	0.60	7.77%	0.62	0.128	(0.001)	70.6	0.139	0.103	(1.5%)	190,100	24,144	6.1%	8.4%
▼ Commercial Facilities Co.	FACI.KW	12.1	0.62	7.81%	0.58	0.194	(0.007)	104.1	0.205	0.021	10.9%	609,000	118,717	2.0%	5.1%
▲ Int'l Financial Advisors Co.	IFIN.KW	NM	0.64	0.00%	1.65	0.028	0.002	20.1	0.039	0.021	(0.7%)	7,799,482	212,649	20.2%	NM
▲ National Investment Co.	NINV.KW	14.5	0.60	5.23%	1.33	0.122	0.002	106.9	0.122	0.070	47.9%	6,313,614	762,457	10.3%	4.1%
= Kuwait Projects Co.(Holding)	KPRO.KW	12.4	1.27	4.31%	0.76	0.227	0.000	351.2	0.276	0.033	9.1%	474,210	108,992	3.4%	10.2%
▼ Coast Invest. & Development Co.	COAS.KW	18.5	0.47	0.00%	2.02	0.043	(0.000)	26.6	0.045	0.028	28.0%	472,449	19,775	8.3%	2.6%
▼ The Securities House Co.	SECH.KW	NM	0.60	0.00%	1.30	0.054	(0.000)	24.3	0.062	0.043	1.7%	4,775,563	256,336	34.5%	0.5%
▲ Arzan Financial Group For Fin. & Invest.	ARZA.KW	11.7	0.29	0.00%	1.15	0.037	0.002	29.7	0.037	0.025	24.2%	9,007,983	326,390	10.5%	2.5%
▼ Kuwait Financial Centre	MARKZ.KW	19.3	0.49	5.44%	0.67	0.092	(0.000)	44.2	0.110	0.046	(8.1%)	21,700	1,994	0.5%	2.5%
▼ Kuwait & M.E. Financial Inv. Co.	KMEF.KW	64.4	0.82	0.00%	0.75	0.047	(0.000)	12.4	0.054	0.019	46.6%	100,035	4,652	12.7%	1.3%
▼ Al-Aman Investment Co.	AMAN.KW	11.5	0.59	0.00%	0.82	0.064	(0.003)	9.5	0.081	0.034	30.4%	5,077,576	329,483	49.9%	5.2%
▲ First Investment Co.	OLAK.KW	NM	0.30	0.00%	0.95	0.043	0.001	27.7	0.045	0.016	7.3%	13,878,825	591,717	65.6%	0.3%
= Al-Mal Investment Co.	MALK.KW	NM	0.51	0.00%	1.68	0.018	0.000	5.5	0.025	0.017	(7.3%)	1,657,218	29,817	15.0%	NM
▼ Gulf Investment House	GIHK.KW	2.0	0.71	0.00%	1.13	0.064	(0.001)	26.1	0.083	0.014	260.1%	775,670	49,522	7.3%	35.8%
▼ A'ayan Leasing & Investment Co.	AAYA.KW	14.0	0.52	0.00%	1.38	0.052	(0.002)	42.3	0.056	0.028	39.4%	7,596,030	402,703	119.0%	3.7%
▲ Bayan Investment Co.	BAYK.KW	NM	0.46	0.00%	1.65	0.042	0.000	16.6	0.052	0.032	(12.4%)	90,475	3,684	2.5%	NM
▼ Osoul Investment Co.	OSUL.KW	15.3	0.51	9.72%	0.49	0.057	(0.001)	10.8	0.064	0.050	(5.6%)	33,697	1,924	1.2%	3.4%
= Kuwait Finance & Investment Co.	KFSK.KW	NM	0.36	0.00%	0.46	0.043	0.000	13.9	0.049	0.033	26.5%	8,455	357	5.8%	0.4%
▼ KAMCO Investment Co.	KAMC.KW	7.2	0.52	6.44%	0.15	0.070	(0.000)	18.4	0.091	0.062	1.4%	25,748	1,815	1.2%	7.2%
▼ National International Holding Co.	NIHK.KW	6.9	0.39	6.31%	0.93	0.073	(0.007)	15.9	0.081	0.053	18.1%	280,500	21,032	4.0%	5.7%
▲ UniCap Investment and Finance	UNICAP.KW	6.6	0.61	4.89%	0.71	0.061	0.003	14.6	0.085	0.045	(22.9%)	379,562	22,864	11.9%	9.1%
▲ Al Madar Finance & Investment Co.	MADR.KW	2.3	1.58	0.00%	0.44	0.158	0.001	33.8	0.180	0.014	(5.4%)	823,565	129,584	29.2%	69.5%
▲ Al-Deera Holding	DEER.KW	6.6	0.47	0.00%	1.58	0.016	0.000	3.1	0.026	0.016	(15.1%)	646,312	9,938	3.5%	7.2%
▲ Al Salam Group Holding Co.	SAGH.KW	30.4	0.31	0.00%	1.59	0.036	0.000	9.7	0.039	0.017	11.8%	2,383,040	85,576	20.6%	1.0%
= Ekttitab Holding Co.	EKTT.KW	NM	0.37	0.00%	1.27	0.019	0.000	6.1	0.029	0.019	(8.1%)	0	0	8.4%	NM
▲ Al Madina For Finance & Investment Co.	MADI.KW	NM	0.55	0.00%	1.23	0.025	0.001	10.1	0.031	0.020	20.5%	7,134,207	171,259	50.6%	NM
▲ NOOR Financial Investment Co.	NOOR.KW	1.5	0.67	0.00%	0.75	0.090	0.001	37.0	0.095	0.045	16.5%	389,777	34,252	34.6%	45.2%
= Tamdeen Investment Co.	TAMI.KW	14.2	0.55	3.92%	0.18	0.305	0.000	105.2	0.349	0.232	8.9%	301	88	0.2%	3.9%
= Kuwait Bahrain Int'l Exchange Co.	EXCH.KW	14.6	0.61	0.00%	NA	0.086	0.000	4.0	N/A	N/A	0.0%	0	0	0.0%	4.2%
▼ Kuwait Syrian Holding Co.	KSHC.KW	NM	0.56	5.13%	1.57	0.059	(0.001)	10.3	0.082	0.027	46.3%	1,173,800	68,879	39.7%	NM
▼ Asiya Capital Investment Co.	ASIYA.KW	27.0	0.42	0.00%	0.90	0.037	(0.001)	29.6	0.044	0.030	8.8%	438,234	16,002	2.6%	1.5%
▼ Gulf North Africa Holding Co.	GNAH.KW	NM	0.79	0.00%	1.71	0.054	(0.000)	8.1	0.057	0.034	10.2%	365,265	19,599	13.7%	NM
= Amwah International Investment Co.	AMWA.KW	17.8	0.62	0.00%	0.69	0.060	0.000	10.8	0.064	0.045	(3.4%)	0	0	0.0%	3.5%
▼ Alimtiq Investment Group	ALIMK.KW	7.7	0.75	5.64%	0.81	0.136	(0.001)	154.2	0.143	0.122	1.5%	2,136,451	291,483	7.2%	9.7%
▼ Tamkeen Holding Co.	TAMKE.KW	NM	0.08	0.00%	NA	0.008	(0.002)	0.5	0.017	0.003	(19.2%)	9,722	78	1.1%	NM
= Manazel Holding Co.	MANK.KW	NM	0.61	0.00%	1.80	0.025	0.000	10.8	0.040	0.024	1.2%	0	0	3.6%	NM
▼ National Industries Group	NIND.KW	16.0	0.90	4.27%	1.34	0.234	(0.001)	318.2	0.237	0.147	48.1%	8,290,285	1,948,326	32.9%	5.6%
▲ Warba Capital Holding Co.	WARBACAP.KW	NM	0.77	0.00%	1.23	0.077	0.001	5.5	0.080	0.019	151.6%	13,429	954	19.4%	NM
▼ Arabi Holding Group Co.	AGHC.KW	33.1	0.55	0.00%	0.31	0.082	(0.003)	14.2	0.092	0.060	18.7%	28,958	2,339	1.8%	1.7%
▲ Privatization Holding Co.	KPPC.KW	NM	0.41	8.46%	1.29	0.059	0.000	36.1	0.065	0.018	12.6%	1,029,223	61,294	16.9%	NM
= Credit Rating & Collection Co.	TAHS.KW	NM	0.63	0.00%	NA	0.022	0.000	3.6	0.024	0.018	(3.1%)	0	0	0.2%	NM
= Egypt Kuwait Holding Co.	EKHK.KW	18.6	3.11	4.40%	0.35	0.455	0.000	466.1	0.475	0.069	40.0%	0	0	0.2%	16.7%
= GFH Financial Group	GFH.KW	4.0	0.44	8.89%	1.18	0.079	0.000	177.6	0.113	0.066	2.5%	1,759,720	138,240	6.6%	10.8%
= Inovent	INOV.KW	5.4	0.55	0.00%	0.99	0.080	0.000	22.9	0.092	0.065	0.0%	0	0	3.6%	10.3%
= Sanad Holding Co.	SANAD.KW	23.9	0.33	0.00%	0.06	0.110	0.000	13.2	0.110	0.031	10.0%	0	0	0.1%	1.4%
= Amar For Finance and Leasing Co.	AMARF.KW	NM	0.36	0.00%	0.10	0.031	0.000	6.2	0.049	0.033	(24.9%)	0	0	0.1%	NM
▲ Al-Manar Financing & Leasing Co.	ALMANAR.KW	19.1	0.38	0.00%	NA	0.040	0.000	12.3	0.075	0.000	(25.0%)	112,000	4,469	7.3%	2.0%
Financial Services		11.6	0.74	4.28%				2,500.4			19.2%	86,302,181	6,273,384		6.4%

Boursa Kuwait Daily Bulletin

Sunday, April 21, 2019

Company	Reuters Ticker	Valuation Multiples				Price (KWD)		MKT Cap (KWD Mn.)	52 Weeks High (KWD)	52 Weeks Low (KWD)	YTD-19 Return #	Daily Trading Data		YTD-19 Capital Turnover	ROE
		Trailing P/E (X)	Trailing P/BV (X)	Dividend Yield	Beta	Closing	DTD Change					Volume (Shrs.)	Value (KWD)		
= Automated Systems Co.	ASCK.KW	22.7	0.85	13.39%	NA	0.112	0.000	11.2	0.161	0.066	3.7%	0	0	0.3%	3.7%
▼ Osos Holding Group Co.	OSOS.KW	8.8	0.81	9.35%	0.45	0.107	(0.011)	10.7	0.118	0.079	4.9%	240,350	25,158	7.4%	9.2%
= Hayat Communications Co.	HAYK.KW	22.2	0.61	0.00%	1.34	0.066	0.000	6.1	0.080	0.027	(2.9%)	0	0	0.1%	2.7%
Technology		14.1	0.77	8.93%				28.0			2.6%	240,350	25,158		5.4%

Boursa Kuwait	16.0	1.41	4.20%		33,353.9		15.0%	173,651,265	28,697,763		8.8%
----------------------	-------------	-------------	--------------	--	-----------------	--	--------------	--------------------	-------------------	--	-------------

Year-to-Date 2019 Top Movers & Most Active Stocks

YTD Top % Gainers	Close (KWD)	Percent Change
Gulf Investment House	0.064	260.1%
Warba Capital Holding Co.	0.077	151.6%
National Industries Group	0.234	48.1%
National Investment Co.	0.122	47.9%
Kuwait & M.E. Financial Inv. Co.	0.047	46.6%

YTD Top % Losers	Close (KWD)	Percent Change
Yiaco Medical Co.	0.067	(37.9%)
United Projects Group	0.435	(31.5%)
IFA Hotels & Resorts Co.	0.062	(30.3%)
Kuwait Reinsurance Co.	0.140	(28.2%)
Al-Manar Financing & Leasing Co.	0.040	(25.0%)

YTD Most Active by Volume	Close (KWD)	Volume (Shrs.)
Gulf Bank	0.307	1,196,832,040
Ahli United Bank - Bahrain	0.259	1,180,822,566
A'ayan Leasing & Investment Co.	0.052	968,845,421
Abyaar Real Estate Development Co.	0.014	556,846,931
Gulf Petroleum Investment	0.030	463,752,011

YTD Most Active by Value	Close (KWD)	Value (KWD)
National Bank of Kuwait	0.935	395,203,885
Gulf Bank	0.307	342,129,023
Kuwait Finance House	0.694	292,448,354
Ahli United Bank - Bahrain	0.259	289,746,393
Zain	0.482	123,185,014

* Different Fiscal Year Company