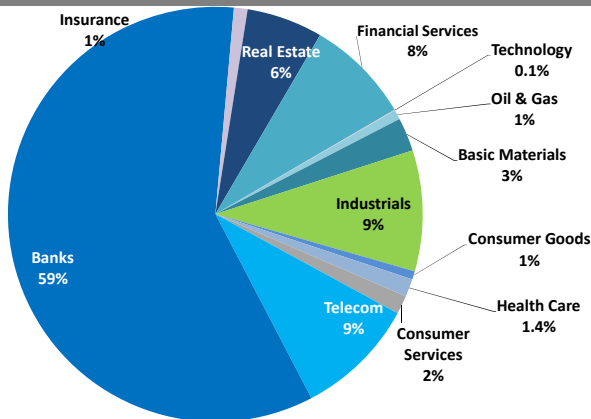


## Boursa Kuwait Daily Report

October 9, 2019

### Sector Weight by Market Cap



### Market Capitalization - Sector Returns

	Market Cap. (KWD Mn)	DTD % Chg	MTD % Chg	YTD % Chg
<b>Boursa Kuwait</b>	<b>32,927.2</b>	<b>▼ (0.5%)</b>	<b>0.2%</b>	<b>13.5%</b>
Oil & Gas	240.6	▲ 2.3%	(0.2%)	5.7%
Basic Materials	861.3	▼ (0.7%)	(1.5%)	(16.5%)
Industrials	3,102.0	▼ (0.0%)	1.1%	(8.9%)
Consumer Goods	212.2	▼ (2.3%)	(6.6%)	3.9%
Health Care	457.1	= 0.0%	0.0%	(2.6%)
Consumer Services	482.4	▼ (0.2%)	(0.2%)	(5.7%)
Telecommunications	3,094.3	▼ (0.4%)	0.7%	13.9%
Banks	19,460.7	▼ (0.7%)	0.4%	20.9%
Insurance	352.8	▲ 0.0%	(0.6%)	(2.1%)
Real Estate	1,948.5	▲ 0.4%	(1.3%)	4.6%
Financial Services	2,694.4	▼ (0.6%)	(0.3%)	28.5%
Technology	21.0	▼ (3.8%)	(3.0%)	(23.1%)

### Top 10 Companies by Market Capitalization

Company Name	Market Cap. (Mn KWD)	P/E (X)	ROE* (%)
1- National Bank of Kuwait	6,171.7	15.7	12.4%
2- Kuwait Finance House	4,744.0	19.8	12.7%
3- Ahli United Bank - Bahrain	2,395.4	11.0	18.5%
4- Zain	2,353.9	11.4	17.0%
5- Boubyan Bank	1,620.9	27.4	10.8%
6- Agility (PWC Logistics)	1,304.6	15.5	8.2%
7- Commercial Bank of Kuwait	998.0	14.8	9.2%
8- Gulf Bank	841.3	15.6	8.6%
9- Burgan Bank	805.9	10.5	10.3%
10- Mabaneer Co.	768.4	13.8	12.5%
<b>Total</b>	<b>22,004</b>	<b>15.11</b>	<b>12.6%</b>

\*: ROE is calculated based on TTM 1H-2019 net profit & shareholders' equity as of 30-June-19

### Top Movers and Most Active Stocks

Today's Top % Gainers	Close (KWD)	Change (KWD)	Percent Change
Al Eid Food Co.	0.055	0.005	9.9%
Bayan Investment Co.	0.041	0.003	9.0%
Real Estate Trade Centers Co.	0.023	0.002	8.1%
Aqar Real Estate Investment Co.	0.075	0.005	7.1%
Ajwan Gulf Real Estate Co.	0.014	0.001	6.9%

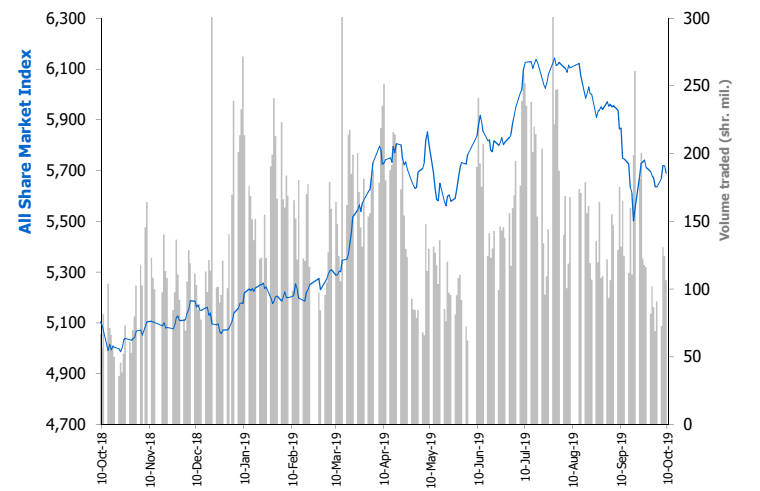
Today's Top % Losers	Close (KWD)	Change (KWD)	Percent Change
Danah Alsafat Foodstuff Co.	0.020	(0.009)	(31.4%)
Umm Al-Qaiwain General Investments Co.	0.054	(0.005)	(8.7%)
Kuwait & M.E. Financial Inv. Co.	0.071	(0.006)	(7.7%)
Gulf Petroleum Investment	0.019	(0.001)	(6.4%)
The Energy House Co.	0.018	(0.001)	(5.8%)

Today's Most Active by Volume	Close (KWD)	Percent Change	Volume (Shares)
Ajwan Gulf Real Estate Co.	0.014	6.9%	15,566,734
Ahli United Bank - Bahrain	0.273	(0.4%)	10,269,328
Gulf Bank	0.276	(2.5%)	8,184,530
A'ayan Leasing & Investment Co.	0.055	(1.8%)	8,175,716
Danah Alsafat Foodstuff Co.	0.020	(31.4%)	7,848,320

Source: Boursa Kuwait, KAMCO Research

Market Breadth	34	62	79
Benchmark Return	Closing Value	DTD Chg	MTD % Chg
Premier Market Index	6,194.13	(42.2)	(0.7%)
Main Market Index	4,707.31	(3.8)	(0.1%)
All Share Market Index	5,689.65	(29.7)	(0.5%)
Market Cap (KWD Mn)	32,927.24	(173.4)	(0.5%)

### Index Performance relative to Volume



### Market Trading Data and Volatility

Trading Indicators	Today's Value	DTD Chg	DTD % Chg	Average Daily YTD 2019	Average Daily YTD 2018
Volume (Shrs Mn)	106.4	(18.0)	(14.4%)	155.6	85.5
Value Traded (KWD Mn)	19.6	(8.6)	(30.4%)	32.4	16.0
No. of Trades	5,033	99	2.0%	6,047	3,699

Today's Most Active by Value	Close (KWD)	Percent Change	Value (KWD)
Kuwait Finance House	0.680	(0.7%)	2,887,799
Ahli United Bank - Bahrain	0.273	(0.4%)	2,804,118
National Bank of Kuwait	0.946	(0.7%)	2,294,014
Gulf Bank	0.276	(2.5%)	2,277,621
Zain	0.544	(0.5%)	1,559,710

## Boursa Kuwait - Premier Market

Wednesday, October 9, 2019

Premier Market Stocks	Closing Price			Market Capitalization			Valuation Multiples				ROE	YTD-19 Price Return	YTD-19 Trading Indicators	
	KWD	DTD Chg. (KWD)	D-T-D Return	KWD Mn	Weight in Premier Index	Weight in Boursa Kuwait	P/E (X)	P/BV (X)	Yield	Beta			Volume (Mn Shrs)	Value (KWD Mn)
▼ National Bank of Kuwait	0.946	(0.007)	(0.7%)	6,172	25.6%	18.7%	15.7	1.94	3.5%	1.32	12.4%	19.1%	916.88	858.98
▼ Gulf Bank	0.276	(0.007)	(2.5%)	841	3.5%	2.6%	15.6	1.35	3.4%	0.93	8.6%	9.5%	2,125.18	623.54
▼ Kuwait International Bank	0.266	(0.004)	(1.5%)	287	1.2%	0.9%	15.5	1.05	3.6%	1.00	6.8%	4.8%	753.05	214.96
▼ Burgan Bank	0.307	(0.006)	(1.9%)	806	3.3%	2.4%	10.5	1.08	3.7%	0.98	10.3%	16.0%	573.41	190.10
▼ Kuwait Finance House	0.680	(0.005)	(0.7%)	4,744	19.7%	14.4%	19.8	2.52	2.6%	1.59	12.7%	22.4%	1,463.52	1,005.76
▼ Boubyan Bank	0.562	(0.001)	(0.2%)	1,621	6.7%	4.9%	27.4	2.95	1.2%	0.93	10.8%	21.2%	194.59	111.31
▼ Kuwait Projects Co. (Holding)	0.218	(0.003)	(1.4%)	436	1.8%	1.3%	14.6	1.70	4.2%	0.75	11.6%	4.8%	186.38	40.51
▲ Mabane Co.	0.737	0.003	0.4%	768	3.2%	2.3%	13.8	1.73	1.5%	1.04	12.5%	28.9%	124.66	85.36
▼ National Industries Group (Holding)	0.226	(0.002)	(0.9%)	323	1.3%	1.0%	8.5	0.88	5.1%	1.36	10.4%	50.2%	1,270.46	279.32
▼ Boubyan Petrochemical Co.	0.753	(0.010)	(1.3%)	403	1.7%	1.2%	38.2	1.42	6.5%	0.70	3.7%	(22.8%)	71.99	61.63
= Qurain Petrochemicals Industries Co.	0.309	0.000	0.0%	340	1.4%	1.0%	9.8	0.80	4.9%	0.67	8.2%	(14.2%)	93.63	33.73
▼ Agility Public Warehousing Co.	0.740	(0.002)	(0.3%)	1,305	5.4%	4.0%	15.5	1.27	1.7%	1.48	8.2%	6.1%	276.10	215.26
▼ Mobile Telecommunications Co.	0.544	(0.003)	(0.5%)	2,354	9.8%	7.1%	11.4	1.93	5.5%	1.63	17.0%	21.2%	805.24	417.09
▲ Human Soft Holding Co.	3.145	0.006	0.2%	384	1.6%	1.2%	11.3	6.24	5.9%	0.42	55.5%	(4.1%)	27.16	87.32
▲ GFH Financial Group (B.S.C)	0.071	0.000	0.6%	262	1.1%	0.8%	7.1	0.83	6.0%	1.09	11.7%	(7.3%)	277.37	20.77
▼ Ahli United Bank (B.S.C)	0.273	(0.001)	(0.4%)	2,395	9.9%	7.3%	11.0	2.03	4.3%	0.83	18.5%	48.7%	2,587.72	670.33
▼ Warba Bank	0.251	(0.003)	(1.2%)	377	1.6%	1.1%	26.8	1.83	0.0%	0.92	6.8%	19.5%	655.39	158.55
▼ Mezzan Holding Co.	0.533	(0.016)	(2.9%)	166	0.7%	0.5%	20.4	1.53	2.9%	0.52	7.5%	6.6%	36.64	17.67
▲ Integrated Holding Co.	0.434	0.016	3.8%	95	0.4%	0.3%	8.5	1.48	9.2%	0.45	17.4%	(48.3%)	56.39	33.27
<b>Subtotal- Premier Market Stocks</b>	<b>5,689.65</b>	<b>(29.72)</b>	<b>-0.52%</b>	<b>24,078</b>	<b>100%</b>	<b>73%</b>	<b>14.8</b>	<b>1.82</b>	<b>3.42%</b>		<b>12.3%</b>	<b>12.0%</b>	<b>12,495.76</b>	<b>5,125.46</b>
<b>Remaining of the Market</b>				<b>8,849</b>		<b>27%</b>	<b>17.6</b>	<b>0.83</b>	<b>4.45%</b>		<b>4.7%</b>		<b>17,227.02</b>	<b>1,070.17</b>

**Boursa Kuwait Daily Bulletin**

Wednesday, October 9, 2019

Company	Reuters Ticker	Valuation Multiples				Price (KWD)		MKT Cap (KWD Mn.)	52 Weeks High (KWD)	52 Weeks Low (KWD)	YTD-19 Return #	Daily Trading Data		YTD-19	
		Trailing P/E (X)	Trailing P/BV (X)	Dividend Yield	Beta	Closing	DTD Change					Volume (Shrs.)	Value (KWD)	Capital Turnover	ROE
= Senergy Holding Co.	SENE.KW	NM	0.27	0.00%	1.37	0.020	0.000	3.9	0.034	0.017	(36.7%)	0	0	7.1%	NM
= Independent Petroleum Group	IPGK.KW	12.3	0.86	5.36%	0.34	0.430	0.000	81.0	0.490	0.379	7.2%	0	0	3.0%	7.0%
▲ National Petroleum Services Co.	NAPS.KW	8.8	3.13	6.18%	0.20	1.099	0.069	109.9	1.170	0.825	19.5%	1,750	1,830	0.8%	35.5%
▼ The Energy House Co.	ENER.KW	NM	0.51	0.00%	0.86	0.018	(0.001)	13.4	0.047	0.017	(51.0%)	26,800	477	2.9%	NM
▼ Gulf Petroleum Investment	GPIK.KW	NM	0.21	0.00%	1.24	0.019	(0.001)	8.7	0.033	0.019	(35.6%)	3,294,313	63,504	129.9%	NM
= Burgan Co. for Drilling, Tdg. & Maint. *	ABAR.KW	10.6	0.37	0.00%	NA	0.098	0.000	23.8	0.115	0.085	3.3%	0	0	0.5%	3.5%
<b>Oil &amp; Gas</b>		<b>16.9</b>	<b>0.87</b>	<b>4.63%</b>				<b>240.6</b>			<b>5.7%</b>	<b>3,322,863</b>	<b>65,811</b>		<b>5.2%</b>
▼ Kuwait Foundry Co.	KFDC.KW	42.7	0.76	18.58%	0.42	0.458	(0.009)	33.1	0.510	0.175	12.7%	8,427	3,918	33.4%	1.8%
▼ Boubyan Petrochemicals Co.*	BPCC.KW	38.2	1.42	6.46%	0.70	0.753	(0.010)	402.7	1.070	0.850	(22.8%)	160,535	121,281	13.5%	3.7%
= Al Kout for Industrial Projects Co.	ALKK.KW	13.6	2.75	5.88%	0.05	0.850	0.000	85.8	0.850	0.303	1.2%	0	0	0.0%	20.2%
= Qurain Petrochemical Industries Co. *	ALQK.KW	9.8	0.80	4.90%	0.67	0.309	0.000	339.7	0.415	0.341	(14.2%)	173,031	52,801	8.5%	8.2%
<b>Basic Materials</b>		<b>16.4</b>	<b>1.10</b>	<b>6.25%</b>				<b>861.3</b>			<b>(16.5%)</b>	<b>341,993</b>	<b>178,000</b>		<b>6.7%</b>
▼ Specialities Group Holding Co.	SPEC.KW	6.4	0.36	0.00%	0.35	0.070	(0.000)	10.5	0.082	0.060	2.3%	79,200	5,533	28.8%	5.7%
▲ Kuwait Cement Co.	KCEM.KW	33.7	0.94	5.59%	0.42	0.261	0.003	191.4	0.380	0.327	(31.1%)	2,730	702	0.5%	2.8%
▼ Gulf Cable & Electrical Ind. Co.	CABL.KW	15.4	0.58	5.83%	1.06	0.463	(0.001)	97.2	0.495	0.346	31.9%	282,135	130,675	36.6%	3.8%
▲ Heavy Eng'g Ind. & Shipbuilding Co.	SHIP.KW	7.1	1.30	7.41%	0.47	0.405	0.001	73.0	0.487	0.370	(6.2%)	371,936	149,771	51.5%	18.3%
▲ Kuwait Portland Cement Co.	PCEM.KW	10.5	1.61	9.08%	0.50	1.101	0.001	110.3	1.459	0.149	(3.3%)	32,264	35,702	9.5%	15.3%
= Shuaiba Industrial Co.	PAPE.KW	23.6	0.91	6.16%	0.18	0.160	0.000	16.1	0.217	1.20%	(14.9%)	0	0	0.2%	3.8%
= Metal & Recycling Co.	MRCK.KW	NM	0.43	0.00%	NA	0.052	0.000	5.2	0.089	1.20%	(17.5%)	0	0	0.6%	NM
= ACICO Industries Co.	ACIC.KW	NM	0.43	3.77%	0.40	0.132	0.000	41.9	0.207	0.150	(21.0%)	0	0	8.1%	NM
= Hilal Cement Co.	HCKK.KW	19.1	0.69	16.67%	0.17	0.090	0.000	9.1	0.146	0.067	(19.6%)	0	0	1.0%	3.6%
= National Industries Co.	NIBM.KW	16.5	0.73	5.84%	0.19	0.165	0.000	59.4	0.202	0.165	(17.5%)	20,000	3,300	0.9%	4.4%
▲ Equipment Holding Co.	EQUI.KW	NM	0.35	0.00%	1.31	0.016	0.000	2.1	0.032	0.025	(42.6%)	53,347	827	28.7%	NM
= National Co. for Consumer Industries	NCCI.KW	NM	0.61	0.00%	NA	0.055	0.000	5.0	0.065	0.065	25.0%	0	0	0.4%	0.3%
= Salbookh Trading Co.	SALB.KW	NM	0.50	0.00%	0.78	0.041	0.000	4.3	0.052	0.036	2.0%	33,685	1,351	59.0%	NM
▼ Agility (PWC Logistics)	AGLT.KW	15.5	1.27	1.66%	1.48	0.740	(0.002)	1,304.6	0.943	0.305	6.1%	712,322	525,548	15.7%	8.2%
= Educational Holding Group*	EDUK.KW	11.8	1.91	4.76%	0.15	0.315	0.000	77.3	0.338	0.054	1.6%	0	0	0.8%	16.2%
▼ National Cleaning Co.	CLEA.KW	8.8	0.42	8.16%	0.92	0.060	(0.000)	14.9	0.072	0.053	3.7%	21	1	6.4%	4.8%
= Kuwait & Gulf Link Transport Co.	KGLK.KW	11.3	0.30	6.71%	0.91	0.071	0.000	19.7	0.104	0.090	(25.9%)	0	0	16.5%	2.6%
= Kuwait Co. For Process Plant Const. & Cont.	KPCP.KW	5.2	0.87	9.12%	0.32	0.212	0.000	21.3	0.259	0.220	(7.8%)	0	0	3.1%	16.7%
▲ Humansoft Holding Co.	HUMN.KW	11.3	6.24	5.85%	0.42	3.145	0.006	384.4	3.500	2.996	(4.1%)	77,175	242,788	22.2%	55.5%
= Gulf Franchising Co.	GFCI.KW	NM	1.92	0.00%	NA	0.160	0.000	6.4	0.249	0.009	128.6%	0	0	0.0%	NM
▼ National Shooting Co.	SHOOTING.KW	NM	0.15	0.00%	1.71	0.010	(0.000)	2.9	0.018	0.015	(36.3%)	500	5	17.7%	NM
▼ Combined Group Contracting Co.	CGCK.KW	6.7	0.81	8.67%	0.10	0.230	(0.001)	37.6	0.392	0.295	(28.1%)	672,690	155,220	105.9%	12.0%
= United Projects Group	UPAC.KW	8.1	1.01	3.71%	0.02	0.437	0.000	71.9	0.660	0.217	(31.2%)	0	0	0.6%	12.5%
▼ ALAFCO Aviation Lease & Finance Co.*	ALAF.KW	14.8	0.80	3.76%	0.41	0.266	(0.001)	253.3	0.372	0.054	(23.8%)	138,961	36,863	13.3%	5.4%
= Mubarrad Holding Co.	MBRD.KW	5.6	0.48	8.33%	0.85	0.059	0.000	9.7	0.080	0.035	(9.2%)	0	0	43.0%	8.6%
▼ KGL Logistics Co.	LOGK.KW	5.1	0.26	0.00%	0.79	0.036	(0.000)	26.3	0.044	0.040	(11.4%)	880,351	31,454	46.8%	5.1%
▲ Integrated holding Co.	INTEGRATED.KW	8.5	1.48	9.22%	0.45	0.434	0.016	95.5	0.890	0.720	(48.3%)	1,872,671	806,805	25.6%	17.4%
▼ Sharjah Cement Co.	SCEM.KW	29.1	0.32	13.11%	0.42	0.061	(0.000)	37.1	0.087	0.052	(29.8%)	17,200	1,049	0.8%	1.1%
= Gulf Cement Co.	GCEM.KW	NM	0.54	14.47%	0.37	0.055	0.000	45.4	0.078	0.052	(18.6%)	1,000	55	1.3%	NM
▼ Umm Al-Qaiwain General Investments Co.	QIC.KW	11.4	0.35	13.01%	0.24	0.054	(0.005)	19.5	0.091	0.044	(19.1%)	410,500	22,427	0.8%	3.0%
= Fujairah Cement Industries Co.	FCEM.KW	23.2	0.21	11.76%	0.57	0.051	0.000	18.1	0.065	0.053	(19.7%)	5,100	250	7.2%	0.9%
= Ras-Al-Khaimah for White Cement Co.	RKWC.KW	30.2	0.50	8.13%	0.21	0.062	0.000	30.8	0.085	0.059	(17.9%)	0	0	0.6%	1.7%
<b>Industrials</b>		<b>14.3</b>	<b>1.01</b>	<b>4.36%</b>				<b>3,102.0</b>			<b>(8.9%)</b>	<b>5,663,788</b>	<b>2,150,327</b>		<b>7.1%</b>

**Boursa Kuwait Daily Bulletin**

Wednesday, October 9, 2019

Company	Reuters Ticker	Valuation Multiples				Price (KWD)		MKT Cap (KWD Mn.)	52 Weeks High (KWD)	52 Weeks Low (KWD)	YTD-19 Return #	Daily Trading Data		YTD-19	ROE
		Trailing P/E (X)	Trailing P/BV (X)	Dividend Yield	Beta	Closing	DTD Change					Volume (Shrs.)	Value (KWD)	Capital Turnover	
= Palms Agro Production Co.	PAPK.KW	NM	0.46	16.92%	<b>0.27</b>	<b>0.059</b>	0.000	<b>3.1</b>	0.076	0.047	(1.7%)	0	0	0.8%	NM
▲ Livestock Transport & Trading Co.	CATT.KW	NM	1.02	2.56%	<b>0.38</b>	<b>0.189</b>	0.005	<b>40.9</b>	0.202	0.019	0.5%	9,000	1,701	2.0%	NM
▼ Danah Alsafat Foodstuff Co.	DANK.KW	NM	0.24	0.00%	<b>0.57</b>	<b>0.020</b>	(0.009)	<b>2.2</b>	0.043	0.036	(47.2%)	7,848,320	158,682	103.0%	NM
▼ Mezzan Holding Co.	MEZZ.KW	20.4	1.53	2.95%	<b>0.52</b>	<b>0.533</b>	(0.016)	<b>165.9</b>	0.660	0.431	6.6%	47,368	25,649	11.8%	7.5%
<b>Consumer Goods</b>		<b>57.0</b>	<b>1.29</b>	<b>3.04%</b>				<b>212.2</b>			<b>3.9%</b>	<b>7,904,688</b>	<b>186,032</b>		<b>2.3%</b>
= Advanced Technology Co.	ATCK.KW	29.8	2.34	1.67%	NA	<b>0.900</b>	0.000	<b>135.0</b>	1.000	0.067	(10.0%)	0	0	0.0%	7.9%
= Yiacco Medical Co.	YIAC.KW	NM	12.28	0.00%	<b>0.57</b>	<b>0.067</b>	0.000	<b>12.1</b>	0.128	0.080	(37.9%)	0	0	0.0%	NM
= Al-Maidan Clinic For Oral Health Services Co.	MIDAN.KW	48.1	8.91	0.40%	<b>0.00</b>	<b>1.240</b>	0.000	<b>310.0</b>	1.260	1.080	3.3%	0	0	0.2%	18.5%
<b>Health Care</b>		<b>NM</b>	<b>4.89</b>	<b>0.77%</b>				<b>457.1</b>			<b>(2.6%)</b>	<b>0</b>	<b>0</b>		<b>3.7%</b>
= Kuwait National Cinema Co.	KCIN.KW	9.8	1.01	6.13%	<b>0.17</b>	<b>0.751</b>	0.000	<b>75.9</b>	1.090	0.830	(29.7%)	0	0	0.5%	10.4%
= Kuwait Hotels Co.	KHOT.KW	NM	1.17	0.00%	NA	<b>0.100</b>	0.000	<b>5.8</b>	0.130	0.040	(23.1%)	0	0	0.0%	NM
= Sultan Center Food Products Co.	SCFK.KW	NM	0.58	0.00%	<b>0.66</b>	<b>0.044</b>	0.000	<b>25.4</b>	0.062	0.013	(16.9%)	149,184	6,519	11.4%	NM
= Kuwait Cable Vision Co.	KWTV.KW	NM	0.61	0.00%	<b>0.37</b>	<b>0.017</b>	0.000	<b>0.6</b>	0.033	0.008	(15.0%)	0	0	2.4%	NM
▼ IFA Hotels & Resorts Co.*	IFAH.KW	NM	0.87	0.00%	<b>0.14</b>	<b>0.052</b>	(0.000)	<b>33.0</b>	0.097	0.054	(41.7%)	3,366	160	0.6%	NM
▼ Oula Fuel Marketing Co.	OULA.KW	12.2	0.67	4.25%	<b>0.44</b>	<b>0.116</b>	(0.003)	<b>46.9</b>	0.132	0.050	(1.7%)	13,228	1,539	4.7%	5.5%
= Kuwait Resorts Co.	MUNK.KW	8.2	0.39	9.17%	<b>0.70</b>	<b>0.055</b>	0.000	<b>10.7</b>	0.067	0.054	(3.2%)	0	0	48.1%	4.7%
▲ Jazeera Airways Co.	JAZK.KW	17.2	6.31	3.55%	<b>0.28</b>	<b>0.986</b>	0.001	<b>197.2</b>	1.000	0.114	35.1%	109,577	108,044	11.5%	36.6%
▼ Soor Fuel Marketing Co.	SOOR.KW	13.8	0.72	4.27%	<b>0.39</b>	<b>0.116</b>	(0.001)	<b>46.9</b>	0.129	0.110	0.9%	16,310	1,892	4.1%	5.3%
= Future Kid Entertainment and R.E Co.	KIDK.KW	12.6	0.50	14.09%	NA	<b>0.084</b>	0.000	<b>9.8</b>	0.135	0.089	(11.6%)	0	0	3.0%	4.0%
▲ Al Rai Media Group Co.	ALRA.KW	NM	0.67	NM	<b>0.47</b>	<b>0.040</b>	0.000	<b>9.3</b>	0.089	0.041	(34.3%)	84,383	3,459	5.0%	NM
= Jiyad Holding Co	JIYAD.KW	10.3	0.40	0.00%	<b>0.67</b>	<b>0.044</b>	0.000	<b>15.3</b>	0.087	0.064	(38.9%)	0	0	43.1%	3.9%
▲ Al Eid Food Co.	ALEID.KW	4.0	0.32	0.00%	<b>0.03</b>	<b>0.055</b>	0.005	<b>5.6</b>	0.081	0.060	(16.1%)	185,000	8,577	3.4%	8.2%
<b>Consumer Services</b>		<b>NM</b>	<b>1.08</b>	<b>4.89%</b>				<b>482.4</b>			<b>(5.7%)</b>	<b>561,048</b>	<b>130,191</b>		<b>NM</b>
▼ Zain	ZAIN.KW	11.4	1.93	5.51%	<b>1.63</b>	<b>0.544</b>	(0.003)	<b>2,353.9</b>	0.603	0.435	21.2%	2,860,452	1,559,710	18.6%	17.0%
= National Mobile Telecom Co.	OORE.KW	10.3	0.64	6.98%	<b>0.51</b>	<b>0.712</b>	0.000	<b>358.9</b>	0.783	0.010	(0.3%)	7,590	5,410	2.0%	6.2%
▲ AAN digital services Co.	AAN.KW	18.5	0.49	0.00%	<b>1.62</b>	<b>0.017</b>	0.000	<b>14.5</b>	0.021	0.016	(4.6%)	945,401	15,515	46.8%	2.6%
▲ Kuwait Telecommunication Co.	VIVA.KW	7.9	1.91	5.44%	<b>0.69</b>	<b>0.735</b>	0.004	<b>367.1</b>	0.899	0.707	(8.1%)	22,340	16,386	1.8%	24.3%
<b>Telecommunications</b>		<b>10.7</b>	<b>1.55</b>	<b>5.65%</b>				<b>3,094.3</b>			<b>13.9%</b>	<b>3,835,783</b>	<b>1,597,021</b>		<b>14.5%</b>
▼ National Bank of Kuwait	NBKK.KW	15.7	1.94	3.47%	<b>1.32</b>	<b>0.946</b>	(0.007)	<b>6,171.7</b>	1.024	0.270	19.1%	2,416,519	2,294,014	14.1%	12.4%
▼ Gulf Bank	GBKK.KW	15.6	1.35	3.44%	<b>0.93</b>	<b>0.276</b>	(0.007)	<b>841.3</b>	0.330	0.246	9.5%	8,184,530	2,277,621	69.7%	8.6%
= Commercial Bank of Kuwait	CBKK.KW	14.8	1.37	3.61%	<b>0.68</b>	<b>0.501</b>	0.000	<b>998.0</b>	0.700	0.295	10.2%	0	0	2.4%	9.2%
= Ahli Bank of Kuwait	ABKK.KW	10.6	0.82	4.64%	<b>0.61</b>	<b>0.299</b>	0.000	<b>484.1</b>	0.350	0.285	1.4%	122,500	36,628	1.7%	7.7%
▼ Ahli United Bank - Kuwait	BKME.KW	12.6	1.55	3.97%	<b>0.79</b>	<b>0.324</b>	(0.004)	<b>668.3</b>	0.369	0.248	14.5%	117,057	37,702	5.8%	12.3%
▼ Kuwait International Bank	KIBK.KW	15.5	1.05	3.58%	<b>1.00</b>	<b>0.266</b>	(0.004)	<b>287.0</b>	0.343	0.228	4.8%	3,778,336	1,010,794	69.8%	6.8%
▼ Burgan Bank	BURG.KW	10.5	1.08	3.71%	<b>0.98</b>	<b>0.307</b>	(0.006)	<b>805.9</b>	0.405	0.262	16.0%	933,316	288,644	21.8%	10.3%
▼ Kuwait Finance House	KFH.KW	19.8	2.52	2.64%	<b>1.59</b>	<b>0.680</b>	(0.005)	<b>4,744.0</b>	0.800	0.500	22.4%	4,232,954	2,887,799	21.0%	12.7%
▼ Boubyan Bank	BOUK.KW	27.4	2.95	1.18%	<b>0.93</b>	<b>0.562</b>	(0.001)	<b>1,620.9</b>	0.630	0.215	21.2%	401,036	225,936	6.7%	10.8%
▼ Warba Bank	WARB.KW	26.8	1.83	0.00%	<b>0.92</b>	<b>0.251</b>	(0.003)	<b>376.5</b>	0.265	0.205	19.5%	2,539,062	640,957	43.7%	6.8%
▼ Ahli United Bank - Bahrain	AUBK.KW	11.0	2.03	4.25%	<b>0.83</b>	<b>0.273</b>	(0.001)	<b>2,395.4</b>	0.299	0.019	48.7%	10,269,328	2,804,118	29.5%	18.5%
= Ithmaar Bank	ITHMR.KW	NM	2.38	0.00%	<b>1.41</b>	<b>0.022</b>	0.000	<b>67.6</b>	0.031	0.024	(10.8%)	0	0	4.9%	NM
<b>Banks</b>		<b>15.8</b>	<b>1.87</b>	<b>3.16%</b>				<b>19,460.7</b>			<b>20.9%</b>	<b>32,994,638</b>	<b>12,504,213</b>		<b>11.8%</b>



**Boursa Kuwait Daily Bulletin**

Wednesday, October 9, 2019

Company	Reuters Ticker	Valuation Multiples				Price (KWD)		MKT Cap (KWD Mn.)	52 Weeks High (KWD)	52 Weeks Low (KWD)	YTD-19 Return #	Daily Trading Data		YTD-19	
		Trailing P/E (X)	Trailing P/BV (X)	Dividend Yield	Beta	Closing	DTD Change					Volume (Shrs.)	Value (KWD)	Capital Turnover	ROE
= Kuwait Insurance Co.	KINS.KW	5.8	0.63	7.44%	0.03	0.320	0.000	62.1	0.427	0.310	(11.1%)	0	0	2.4%	10.9%
= Gulf Insurance Group	GINS.KW	9.5	1.40	5.07%	0.04	0.680	0.000	127.2	0.730	0.401	3.8%	0	0	4.5%	14.8%
= Ahleiah Insurance Co.	AINS.KW	8.7	0.84	8.02%	0.18	0.429	0.000	85.8	0.450	0.056	0.5%	0	0	2.3%	9.6%
= Warba Insurance Co.	WINS.KW	8.1	0.31	0.00%	0.55	0.069	0.000	11.9	0.085	0.061	4.5%	0	0	2.3%	3.9%
= Kuwait Reinsurance Co.	KWRE.KW	6.9	0.58	2.97%	0.01	0.158	0.000	29.8	0.198	0.036	(14.1%)	0	0	0.3%	8.4%
= First Takaful Insurance Co.	FTIK.KW	4.8	0.43	0.00%	0.11	0.040	0.000	4.3	0.053	0.027	(9.3%)	0	0	1.7%	8.8%
▲ Wethaq Takaful Insurance Co.	WETH.KW	68.9	0.27	0.00%	0.67	0.028	0.001	3.1	0.045	0.024	0.4%	100	3	15.3%	0.4%
= Bahrain Kuwait Insurance Co.	BKIK.KW	10.0	0.99	12.50%	0.04	0.200	0.000	28.6	N/A	N/A	0.0%	0	0	0.0%	9.9%
<b>Insurance</b>		<b>8.1</b>	<b>0.82</b>	<b>6.35%</b>				<b>352.8</b>			<b>(2.1%)</b>	<b>100</b>	<b>3</b>		<b>10.1%</b>
▼ Sokouk Holding Co.	SHCK.KW	NM	0.39	0.00%	1.39	0.032	(0.000)	18.8	0.048	0.038	(19.7%)	60,053	1,789	33.8%	NM
▼ Kuwait Real Estate Co.	KREK.KW	9.3	0.57	0.00%	1.29	0.081	(0.001)	76.9	0.090	0.044	56.5%	4,802	395	63.6%	6.2%
= United Real Estate Co.	UREK.KW	NM	0.37	0.00%	0.64	0.061	0.000	72.5	0.066	0.058	1.7%	0	0	2.3%	NM
▼ National Real Estate Co.	NREK.KW	10.6	0.41	0.00%	1.32	0.079	(0.001)	108.1	0.100	0.080	(12.7%)	645,546	50,868	13.7%	3.9%
= Salhia Real Estate Co.	SREK.KW	10.5	1.14	5.84%	0.31	0.330	0.000	169.2	0.350	0.324	0.0%	200,000	66,000	4.3%	10.9%
= Tamdeen Real Estate Co.	TAMK.KW	16.2	0.69	3.49%	0.25	0.278	0.000	120.1	0.400	0.123	(20.6%)	0	0	0.5%	4.2%
▲ Ajial Real Estate Entertainment Co.	AREC.KW	13.0	0.20	3.80%	0.34	0.131	0.003	24.3	0.152	0.031	(3.0%)	8,000	1,045	3.2%	1.5%
= Al Massaleh Real Estate Co.	MREC.KW	NM	0.40	0.00%	0.41	0.038	0.000	9.0	0.044	0.023	3.8%	0	0	3.7%	NM
= Arab Real Estate Co.	ARAB.KW	NM	0.23	0.00%	1.31	0.026	0.000	13.2	0.035	0.027	(10.4%)	274,065	6,938	27.8%	NM
= AL-Enma'a Real Estate Co.*	ENMA.KW	NM	0.48	0.00%	0.76	0.048	0.000	21.5	0.050	0.030	45.9%	1,960,011	94,528	75.2%	NM
▲ Mabanee Co.	MABK.KW	13.8	1.73	1.53%	1.04	0.737	0.003	768.4	0.800	0.074	28.9%	272,571	200,117	12.0%	12.5%
▲ Injazzat Real Estate Development Co.	INJA.KW	6.8	0.47	8.31%	0.48	0.082	0.003	28.3	0.090	0.008	(4.7%)	100	8	2.6%	6.9%
▲ Investors Holding Group Co.	INVK.KW	NM	0.21	0.00%	1.55	0.008	0.000	5.0	0.014	0.012	(33.6%)	711,790	5,783	133.8%	NM
= International Resorts Co.	IRCK.KW	2.7	0.22	0.00%	1.35	0.014	0.000	2.2	0.030	0.018	(36.6%)	0	0	3.9%	8.3%
▲ The Commercial Real Estate Co.	TIJK.KW	12.4	0.57	5.43%	0.76	0.093	0.003	163.0	0.102	0.030	1.1%	107	9	8.1%	4.6%
= Sanam Real Estate Co.	SANK.KW	NM	0.44	0.00%	0.44	0.035	0.000	4.3	0.050	0.028	0.9%	0	0	3.4%	NM
▼ A'ayan Real Estate Co.	AYRE.KW	4.0	0.38	7.54%	0.85	0.065	(0.000)	27.1	0.068	0.055	13.4%	119,366	7,776	17.6%	9.7%
▲ Aqar Real Estate Investment Co.	AQAR.KW	15.5	0.64	6.03%	NA	0.075	0.005	17.6	0.082	0.023	22.5%	10,000	750	3.4%	4.1%
= Kuwait Real Estate Holding Co.	ALAQ.KW	50.9	0.46	0.00%	0.98	0.027	0.000	5.2	0.032	0.020	8.0%	0	0	3.7%	0.9%
▲ MAZAYA Holding Co.	MAZA.KW	11.4	0.42	14.51%	1.33	0.055	0.000	37.9	0.078	0.070	(21.5%)	152,357	8,290	51.2%	3.6%
▼ Tijara Real Estate & Investment Co.	TIJA.KW	13.8	0.34	5.71%	0.64	0.035	(0.001)	13.0	0.056	0.017	(28.6%)	500	18	2.6%	2.4%
▼ Al TAMEER Real Estate Investment Co.	AMAR.KW	10.7	0.37	0.00%	1.32	0.027	(0.000)	6.4	0.046	0.026	(4.6%)	3,540,089	93,492	150.7%	3.5%
= Arkan Al-Kuwait Real Estate Co. *	ARKK.KW	16.6	0.56	10.06%	0.34	0.080	0.000	20.0	0.091	0.078	(4.8%)	0	0	3.2%	3.4%
= Al-Argan International Real Estate Co.	ARGK.KW	52.3	0.33	4.42%	0.38	0.109	0.000	28.9	0.176	0.012	(19.9%)	0	0	0.1%	0.6%
▼ Abyaar Real Estate Development Co.	ABYR.KW	NM	0.21	0.00%	1.56	0.012	(0.000)	13.6	0.019	0.015	(19.1%)	1,246,115	15,152	94.1%	NM
= Munshaat Real Estate Projects Co.	MUNS.KW	NM	0.55	0.00%	0.98	0.077	0.000	24.8	0.120	0.026	(23.0%)	0	0	4.4%	NM
▼ First Dubai For Real Estate Development	FIRST.KW	15.1	0.42	0.00%	1.54	0.031	(0.001)	31.0	0.043	0.035	(17.8%)	190,100	5,893	9.0%	2.8%
= Kuwait Business Town Real Estate Co.	KBTK.KW	8.1	0.37	7.33%	1.27	0.039	0.000	24.5	0.049	0.044	(9.4%)	60,000	2,340	6.4%	4.5%
= Real Estate Asset Management Co.	REAM.KW	20.9	0.64	4.97%	0.03	0.095	0.000	10.5	0.218	0.033	(44.4%)	0	0	2.5%	3.1%
▼ MENA Real Estate Co. *	MENK.KW	NM	0.26	0.00%	0.93	0.038	(0.000)	5.2	0.050	0.015	6.5%	619,996	23,296	284.3%	NM
= Al Mudon International Real Estate Co.	ALMK.KW	NM	0.13	0.00%	1.32	0.018	0.000	1.8	0.032	0.020	(38.5%)	95	2	36.1%	NM
▲ Real Estate Trade Centers Co.	MARA.KW	NM	0.11	0.00%	0.51	0.023	0.002	3.2	0.037	0.019	3.2%	25,000	571	23.3%	NM
▼ Kuwait Remal Real Estate Co.	REMAL.KW	NM	0.34	0.00%	1.00	0.025	(0.000)	7.7	0.050	0.029	(40.5%)	5,510	133	48.3%	NM
▲ Mashaer Holding Co.	MASHAER.KW	NM	0.55	0.00%	0.29	0.070	0.001	12.5	0.088	0.015	(17.0%)	70,000	4,781	189.8%	NM
= Effect Real Estate Co.	EFFECT.KW	NM	0.29	0.00%	0.81	0.021	0.000	1.7	0.026	0.009	125.3%	0	0	17.3%	NM
▲ Ajwan Gulf Real Estate Co.	AJWN.KW	NM	0.25	0.00%	0.47	0.014	0.001	2.9	0.023	0.017	(23.6%)	15,566,734	213,260	136.3%	NM
= Al Masaken Intl. Real Estate Dev. Co.	MASKN.KW	NM	0.89	0.00%	0.32	0.074	0.000	7.4	0.100	0.036	18.4%	0	0	0.2%	NM
= Dalqan Real Estate Co.	DALQ.KW	NM	2.73	0.00%	NA	0.350	0.000	17.5	N/A	N/A	0.0%	0	0	0.0%	2.1%
= Dar Al Thuraya Real Estate Co.	THURY.KW	20.9	1.53	0.00%	NA	0.162	0.000	23.7	0.198	0.000	(26.4%)	0	0	0.0%	7.3%
<b>Real Estate</b>		<b>35.4</b>	<b>0.68</b>	<b>2.72%</b>				<b>1,948.5</b>			<b>4.6%</b>	<b>25,742,907</b>	<b>803,231</b>		<b>1.9%</b>

Company	Reuters Ticker	Valuation Multiples				Price (KWD)		MKT Cap (KWD Mn.)	52 Weeks High (KWD)	52 Weeks Low (KWD)	YTD-19 Return #	Daily Trading Data		YTD-19	
		Trailing P/E (X)	Trailing P/BV (X)	Dividend Yield	Beta	Closing	DTD Change					Volume (Shrs.)	Value (KWD)	Capital Turnover	ROE
▼ Kuwait Investment Co.	KINV.KW	5.2	0.62	7.31%	0.66	0.136	(0.002)	75.0	0.147	0.117	4.6%	15,000	2,040	20.3%	11.9%
= Commercial Facilities Co.	FACI.KW	7.7	0.68	8.05%	0.56	0.200	0.000	107.4	0.211	0.016	14.3%	0	0	5.0%	8.8%
▼ Int'l Financial Advisors Co.	IFIN.KW	NM	0.66	0.00%	1.66	0.053	(0.001)	14.1	0.056	0.021	88.3%	660,154	34,694	99.3%	NM
▼ National Investment Co.	NINV.KW	9.6	0.59	5.23%	1.32	0.122	(0.002)	106.9	0.145	0.070	47.9%	259,899	31,793	28.2%	6.2%
▼ Kuwait Projects Co.(Holding)	KPRO.KW	14.6	1.70	4.17%	0.75	0.218	(0.003)	436.0	0.235	0.030	4.8%	332,536	72,508	9.3%	11.6%
▼ Coast Invest. & Development Co.	COAS.KW	15.1	0.36	0.00%	1.83	0.032	(0.000)	19.8	0.045	0.028	(4.5%)	261,410	8,104	15.5%	2.4%
▼ The Securities House Co.	SECH.KW	NM	0.47	0.00%	1.25	0.043	(0.000)	19.1	0.062	0.046	(19.8%)	289,752	12,284	50.1%	0.4%
▼ Arzan Financial Group For Fin. & Invest.	ARZA.KW	3.9	0.21	0.00%	1.13	0.026	(0.000)	21.0	0.038	0.025	(12.4%)	3,287,115	85,612	135.6%	5.5%
= Kuwait Financial Centre	MARKZ.KW	10.1	0.48	5.32%	0.67	0.094	0.000	45.1	0.110	0.032	(6.1%)	0	0	17.0%	4.8%
▼ Kuwait & M.E. Financial Inv. Co.	KMEF.KW	61.4	1.21	0.00%	0.84	0.071	(0.006)	18.8	0.108	0.026	122.2%	1,317,957	101,344	57.6%	2.0%
▼ Al-Aman Investment Co.	AMAN.KW	8.5	0.49	0.00%	0.79	0.056	(0.001)	8.4	0.081	0.029	15.0%	2,091	116	87.1%	5.8%
▼ First Investment Co.	OLAK.KW	NM	0.22	0.00%	0.94	0.030	(0.000)	19.3	0.043	0.010	(25.0%)	1,968,158	58,461	127.4%	NM
▲ Al-Mal Investment Co.	MALK.KW	NM	0.40	0.00%	1.60	0.010	0.000	3.2	0.025	0.019	(45.5%)	1,193,632	12,148	38.1%	NM
▲ Gulf Investment House	GIHK.KW	1.4	0.50	0.00%	1.04	0.045	0.002	18.1	0.083	0.014	150.0%	108,073	4,704	10.3%	36.8%
▼ A'ayan Leasing & Investment Co.	AAYA.KW	NM	0.57	0.00%	1.41	0.055	(0.001)	44.8	0.061	0.031	47.5%	8,175,716	457,174	239.6%	0.1%
▲ Bayan Investment Co.	BAYK.KW	NM	0.45	0.00%	1.58	0.041	0.003	16.1	0.051	0.034	(15.1%)	10,000	410	4.7%	NM
= Osoul Investment Co.	OSUL.KW	8.1	0.59	7.93%	0.42	0.070	0.000	13.2	0.074	0.053	15.7%	0	0	4.2%	7.4%
▲ Kuwait Finance & Investment Co.	KFSK.KW	NM	0.39	0.00%	0.56	0.048	0.001	15.4	0.055	0.033	40.9%	365,610	17,047	57.1%	0.4%
▲ KAMCO Investment Co.	KAMC.KW	8.0	0.75	0.00%	0.10	0.099	0.004	26.1	0.106	0.063	43.5%	2	0	2.2%	9.4%
▼ National International Holding Co.	NIHK.KW	5.8	0.32	7.70%	0.97	0.060	(0.000)	13.0	0.081	0.040	(3.2%)	8,174	490	8.4%	5.6%
▼ UniCap Investment and Finance	UNICAP.KW	NM	0.43	7.09%	0.65	0.042	(0.001)	10.1	0.085	0.058	(46.8%)	73,000	3,091	23.1%	NM
▼ Al Madar Finance & Investment Co.	MADR.KW	8.4	1.20	0.00%	0.43	0.121	(0.004)	25.9	0.180	0.010	(27.5%)	988,121	119,898	68.2%	14.2%
▼ Al-Deera Holding	DEER.KW	2.2	0.45	0.00%	1.48	0.012	(0.000)	2.3	0.026	0.016	(36.8%)	35,042	410	12.0%	20.9%
▲ Al Salam Group Holding Co.	SAGH.KW	NM	0.27	0.00%	1.59	0.031	0.000	8.2	0.043	0.013	(5.0%)	860,528	25,956	183.9%	NM
= Ekttab Holding Co.	EKTT.KW	NM	0.36	0.00%	1.28	0.016	0.000	5.1	0.024	0.019	(23.4%)	0	0	16.4%	NM
▼ Al Madina For Finance & Investment Co.	MADI.KW	NM	0.49	0.00%	1.25	0.016	(0.000)	6.5	0.027	0.020	(22.4%)	26,882	428	115.5%	NM
▼ NOOR Financial Investment Co.	NOOR.KW	1.7	0.69	5.55%	0.75	0.090	(0.002)	37.2	0.100	0.050	17.0%	16,079	1,393	52.5%	41.7%
= Tamdeen Investment Co.	TAMI.KW	11.8	0.46	3.64%	0.12	0.328	0.000	113.2	0.349	0.232	17.1%	0	0	0.8%	3.9%
= Kuwait Bahrain Int'l Exchange Co.	EXCH.KW	10.9	0.60	0.00%	NA	0.086	0.000	4.0	N/A	N/A	0.0%	0	0	0.0%	5.5%
▲ Kuwait Syrian Holding Co.	KSHC.KW	NM	0.33	8.72%	1.45	0.034	0.001	6.1	0.082	0.033	(14.0%)	228,306	7,088	57.2%	NM
▼ Asiya Capital Investment Co.	ASIYA.KW	NM	0.39	0.00%	0.85	0.035	(0.001)	27.6	0.039	0.030	1.5%	38,294	1,245	4.9%	0.3%
= Gulf North Africa Holding Co.	GNAH.KW	NM	0.78	0.00%	1.56	0.059	0.000	8.8	0.063	0.035	19.4%	0	0	26.7%	NM
▼ Amwal International Investment Co.	AMWA.KW	7.4	0.35	0.00%	0.63	0.035	(0.001)	6.3	0.087	0.056	(43.4%)	20	1	0.4%	4.7%
▼ Alimtiq Investment Group	ALIMK.KW	9.2	0.70	6.24%	0.87	0.123	(0.003)	139.4	0.147	0.124	(8.2%)	1,001,016	123,525	56.5%	7.6%
= Tamkeen Holding Co.	TAMKE.KW	NM	0.05	0.00%	NA	0.005	0.000	0.3	0.012	0.007	(47.5%)	0	0	12.2%	NM
▲ Manazel Holding Co.	MANK.KW	NM	0.64	0.00%	1.65	0.026	0.000	11.4	0.033	0.024	6.9%	368,497	9,397	18.7%	NM
▼ National Industries Group	NIND.KW	8.5	0.88	5.06%	1.36	0.226	(0.002)	322.7	0.261	0.151	50.2%	3,386,006	762,811	89.0%	10.4%
= Warba Capital Holding Co.	WARBACAP.KW	NM	1.02	0.00%	1.12	0.066	0.000	6.6	0.115	0.019	114.1%	0	0	20.0%	NM
▲ Arabi Holding Group Co.	AGHC.KW	68.4	0.62	0.00%	0.26	0.092	0.001	15.8	0.095	0.060	32.6%	270,040	24,414	8.8%	0.9%
▼ Privatization Holding Co.	KPPC.KW	NM	0.35	9.84%	1.25	0.051	(0.001)	31.0	0.065	0.013	(3.2%)	63,500	3,232	22.5%	NM
= Credit Rating & Collection Co.	TAHS.KW	NM	0.88	0.00%	0.04	0.030	0.000	4.9	0.037	0.019	32.3%	0	0	0.4%	NM
= Egypt Kuwait Holding Co.	EKHK.KW	19.3	3.34	4.00%	0.28	0.500	0.000	512.2	0.500	0.063	53.8%	0	0	0.2%	17.3%
▲ GFH Financial Group	GFH.KW	7.1	0.83	6.03%	1.09	0.071	0.000	262.1	0.100	0.060	(7.3%)	304,975	21,472	7.5%	11.7%
= Inovent	INOV.KW	7.2	0.43	8.06%	0.93	0.062	0.000	17.8	0.089	0.080	(22.5%)	0	0	8.2%	6.1%
= Al Bareeq Holding	BAREEQ.KW	48.0	1.15	0.00%	0.05	0.108	0.000	47.2	0.110	0.025	8.0%	0	0	0.0%	2.4%
= Amar For Finance and Leasing Co.	AMARF.KW	NM	0.52	0.00%	NA	0.045	0.000	9.0	0.066	0.035	9.8%	0	0	1.6%	NM
▼ Al-Manar Financing & Leasing Co.	ALMANAR.KW	21.1	0.37	0.00%	NA	0.039	(0.001)	12.0	0.075	0.000	(26.7%)	100,021	3,651	9.4%	1.7%
<b>Financial Services</b>		<b>12.1</b>	<b>0.82</b>	<b>4.29%</b>				<b>2,694.4</b>			<b>28.5%</b>	<b>26,015,606</b>	<b>2,006,940</b>		<b>6.8%</b>

**Boursa Kuwait Daily Bulletin**

Wednesday, October 9, 2019

Company	Reuters Ticker	Valuation Multiples				Price (KWD)		MKT Cap (KWD Mn.)	52 Weeks High (KWD)	52 Weeks Low (KWD)	YTD-19 Return #	Daily Trading Data		YTD-19 Capital Turnover	ROE
		Trailing P/E (X)	Trailing P/BV (X)	Dividend Yield	Beta	Closing	DTD Change					Volume (Shrs.)	Value (KWD)		
= Automated Systems Co.	ASCK.KW	NM	0.56	5.56%	<b>0.00</b>	<b>0.072</b>	0.000	<b>7.2</b>	0.125	0.066	(33.4%)	0	0	0.7%	NM
= Osos Holding Group Co.	OSOS.KW	6.7	0.77	9.90%	<b>0.41</b>	<b>0.101</b>	0.000	<b>10.1</b>	0.118	0.085	(1.0%)	0	0	12.8%	11.6%
▼ Hayat Communications Co.	HAYK.KW	8.9	0.37	0.00%	<b>1.52</b>	<b>0.040</b>	(0.009)	<b>3.7</b>	0.100	0.025	(41.2%)	4,900	196	1.4%	4.2%
<b>Technology</b>		<b>11.9</b>	<b>0.58</b>	<b>6.67%</b>				<b>21.0</b>			<b>(23.1%)</b>	<b>4,900</b>	<b>196</b>		<b>4.9%</b>

<b>Boursa Kuwait</b>	<b>15.5</b>	<b>1.38</b>	<b>3.69%</b>		<b>32,927.2</b>		<b>13.5%</b>	<b>106,388,314</b>	<b>19,621,964</b>		<b>8.9%</b>
----------------------	-------------	-------------	--------------	--	-----------------	--	--------------	--------------------	-------------------	--	-------------

**Year-to-Date 2019 Top Movers & Most Active Stocks**

YTD Top % Gainers	Close (KWD)	Percent Change
Gulf Investment House	<b>0.045</b>	<b>150.0%</b>
Kuwait & M.E. Financial Inv. Co.	<b>0.071</b>	<b>122.2%</b>
Warba Capital Holding Co.	<b>0.066</b>	<b>114.1%</b>
Int'l Financial Advisors Co.	<b>0.053</b>	<b>88.3%</b>
Kuwait Real Estate Co.	<b>0.081</b>	<b>56.5%</b>

YTD Top % Losers	Close (KWD)	Percent Change
The Energy House Co.	<b>0.018</b>	<b>(51.0%)</b>
Integrated holding Co.	<b>0.434</b>	<b>(48.3%)</b>
Danah Alsafat Foodstuff Co.	<b>0.020</b>	<b>(47.2%)</b>
UniCap Investment and Finance	<b>0.042</b>	<b>(46.8%)</b>
Al-Mal Investment Co.	<b>0.010</b>	<b>(45.5%)</b>

YTD Most Active by Volume	Close (KWD)	Volume (Shrs.)
Ahli United Bank - Bahrain	<b>0.273</b>	<b>2,587,716,441</b>
Gulf Bank	<b>0.276</b>	<b>2,125,177,636</b>
A'ayan Leasing & Investment Co.	<b>0.055</b>	<b>1,950,200,354</b>
Kuwait Finance House	<b>0.680</b>	<b>1,463,518,473</b>
National Industries Group	<b>0.226</b>	<b>1,270,457,639</b>

YTD Most Active by Value	Close (KWD)	Value (KWD)
Kuwait Finance House	<b>0.680</b>	<b>1,005,764,410</b>
National Bank of Kuwait	<b>0.946</b>	<b>858,983,374</b>
Ahli United Bank - Bahrain	<b>0.273</b>	<b>670,330,016</b>
Gulf Bank	<b>0.276</b>	<b>623,536,726</b>
Zain	<b>0.544</b>	<b>417,086,656</b>

\* Different Fiscal Year Company