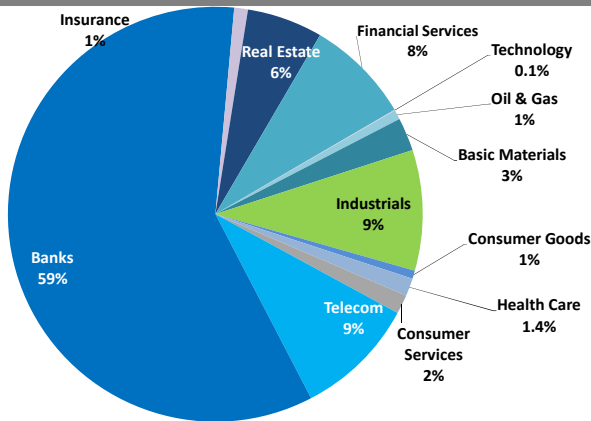


## Boursa Kuwait Daily Report

October 10, 2019

### Sector Weight by Market Cap



### Market Capitalization - Sector Returns

	Market Cap. (KWD Mn)	DTD % Chg	MTD % Chg	YTD % Chg
<b>Boursa Kuwait</b>	<b>33,020.4</b>	<b>▲ 0.3%</b>	<b>0.5%</b>	<b>13.8%</b>
Oil & Gas	241.6	▲ 0.4%	0.2%	6.2%
Basic Materials	859.2	▼ (0.2%)	(1.7%)	(16.7%)
Industrials	3,102.1	▲ 0.0%	1.1%	(8.9%)
Consumer Goods	211.4	▼ (0.3%)	(6.9%)	3.6%
Health Care	457.1	= 0.0%	0.0%	(2.6%)
Consumer Services	490.1	▲ 1.6%	1.4%	(4.2%)
Telecommunications	3,122.5	▲ 0.9%	1.6%	14.9%
Banks	19,512.6	▲ 0.3%	0.7%	21.2%
Insurance	351.9	▼ (0.3%)	(0.9%)	(2.3%)
Real Estate	1,950.4	▲ 0.1%	(1.2%)	4.7%
Financial Services	2,700.5	▲ 0.2%	(0.1%)	28.8%
Technology	21.0	= 0.0%	(3.0%)	(23.1%)

### Top 10 Companies by Market Capitalization

Company Name	Market Cap. (Mn KWD)	P/E (X)	ROE* (%)
1- National Bank of Kuwait	6,191.3	15.7	12.4%
2- Kuwait Finance House	4,751.0	19.8	12.7%
3- Ahli United Bank - Bahrain	2,413.0	11.1	18.5%
4- Zain	2,371.2	11.4	17.0%
5- Boubyan Bank	1,620.9	27.4	10.8%
6- Agility (PWC Logistics)	1,304.6	15.5	8.2%
7- Commercial Bank of Kuwait	998.0	14.8	9.2%
8- Gulf Bank	847.4	15.7	8.6%
9- Burgan Bank	808.5	10.5	10.3%
10- Mabaneer Co.	771.5	13.9	12.5%
<b>Total</b>	<b>22,077</b>	<b>15.16</b>	<b>12.6%</b>

\*: ROE is calculated based on TTM 1H-2019 net profit & shareholders' equity as of 30-June-19

### Top Movers and Most Active Stocks

Today's Top % Gainers	Close (KWD)	Change (KWD)	Percent Change
Umm Al-Qaiwain General Investments Co.	0.061	0.008	14.1%
Ras-Al-Khaimah for White Cement Co.	0.069	0.008	12.2%
Equipment Holding Co.	0.017	0.002	10.3%
Amwal International Investment Co.	0.039	0.004	10.0%
National International Holding Co.	0.065	0.005	8.2%

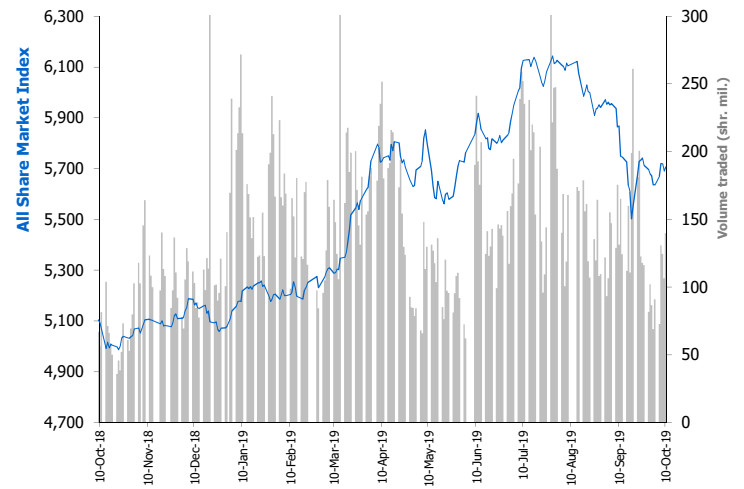
Today's Top % Losers	Close (KWD)	Change (KWD)	Percent Change
Kuwait Syrian Holding Co.	0.031	(0.003)	(9.9%)
Warba Insurance Co.	0.063	(0.007)	(9.4%)
Al Madar Finance & Investment Co.	0.113	(0.008)	(6.6%)
Sokouk Holding Co.	0.030	(0.002)	(5.7%)
Kuwait Remal Real Estate Co.	0.024	(0.001)	(5.6%)

Today's Most Active by Volume	Close (KWD)	Percent Change	Volume (Shares)
Kuwait Real Estate Co.	0.083	2.5%	27,712,232
Gulf Bank	0.278	0.7%	17,981,440
Ajwan Gulf Real Estate Co.	0.014	1.4%	15,813,873
Kuwait Finance House	0.681	0.1%	6,748,804
Ahli United Bank - Bahrain	0.275	0.7%	6,560,151

Source: Boursa Kuwait, KAMCO Research

Market Breadth	52	36	87
Benchmark Return	Closing Value	DTD Chg	MTD % Chg
Premier Market Index	6,213.12	19.0	0.3%
Main Market Index	4,717.94	10.6	0.2%
All Share Market Index	5,705.88	16.2	0.3%
Market Cap (KWD Mn)	33,020.39	93.1	0.3%

### Index Performance relative to Volume



### Market Trading Data and Volatility

Trading Indicators	Today's Value	DTD Chg	DTD % Chg	Average Daily YTD 2019	Average Daily YTD 2018
Volume (Shrs Mn)	139.7	33.3	31.3%	155.5	85.5
Value Traded (KWD Mn)	29.2	9.6	48.7%	32.4	16.0
No. of Trades	5,525	492	9.8%	6,044	3,701

Today's Most Active by Value	Close (KWD)	Percent Change	Value (KWD)
Gulf Bank	0.278	0.7%	4,973,590
Kuwait Finance House	0.681	0.1%	4,587,804
National Bank of Kuwait	0.949	0.3%	4,477,929
Kuwait Real Estate Co.	0.083	2.5%	2,278,564
Zain	0.548	0.7%	1,945,321

## Boursa Kuwait - Premier Market

Thursday, October 10, 2019

Premier Market Stocks	Closing Price			Market Capitalization			Valuation Multiples				ROE	YTD-19 Price Return	YTD-19 Trading Indicators	
	KWD	DTD Chg. (KWD)	D-T-D Return	KWD Mn	Weight in Premier Index	Weight in Boursa Kuwait	P/E (X)	P/BV (X)	Yield	Beta			Volume (Mn Shrs)	Value (KWD Mn)
▲ National Bank of Kuwait	0.949	0.003	0.3%	6,191	25.6%	18.7%	15.7	1.95	3.5%	1.32	12.4%	19.5%	921.60	863.46
▲ Gulf Bank	0.278	0.002	0.7%	847	3.5%	2.6%	15.7	1.36	3.4%	0.93	8.6%	10.3%	2,143.16	628.51
▲ Kuwait International Bank	0.269	0.003	1.1%	290	1.2%	0.9%	15.7	1.06	3.5%	1.00	6.8%	6.0%	757.80	216.23
▲ Burgan Bank	0.308	0.001	0.3%	809	3.3%	2.4%	10.5	1.08	3.7%	0.98	10.3%	16.3%	576.95	191.18
▲ Kuwait Finance House	0.681	0.001	0.1%	4,751	19.7%	14.4%	19.8	2.52	2.6%	1.59	12.7%	22.6%	1,470.27	1,010.35
= Boubyan Bank	0.562	0.000	0.0%	1,621	6.7%	4.9%	27.4	2.95	1.2%	0.93	10.8%	21.2%	195.54	111.84
▲ Kuwait Projects Co. (Holding)	0.219	0.001	0.5%	438	1.8%	1.3%	14.7	1.71	4.1%	0.75	11.6%	5.3%	188.00	40.87
▲ Mabanee Co.	0.740	0.003	0.4%	771	3.2%	2.3%	13.9	1.74	1.5%	1.04	12.5%	29.4%	124.81	85.47
▲ National Industries Group (Holding)	0.227	0.001	0.4%	324	1.3%	1.0%	8.5	0.88	5.0%	1.36	10.4%	50.9%	1,272.98	279.89
▲ Boubyan Petrochemical Co.	0.754	0.001	0.1%	403	1.7%	1.2%	38.2	1.42	6.4%	0.70	3.7%	(22.7%)	72.29	61.86
▼ Qurain Petrochemicals Industries Co.	0.307	(0.002)	(0.6%)	337	1.4%	1.0%	9.7	0.80	4.9%	0.67	8.2%	(14.7%)	93.71	33.76
= Agility Public Warehousing Co.	0.740	0.000	0.0%	1,305	5.4%	4.0%	15.5	1.27	1.7%	1.48	8.2%	6.1%	276.49	215.55
▲ Mobile Telecommunications Co.	0.548	0.004	0.7%	2,371	9.8%	7.2%	11.4	1.94	5.5%	1.63	17.0%	22.0%	808.79	419.03
▼ Human Soft Holding Co.	3.109	(0.036)	(1.1%)	380	1.6%	1.2%	11.1	6.17	5.9%	0.42	55.5%	(5.2%)	27.29	87.73
= GFH Financial Group (B.S.C)	0.071	0.000	0.0%	262	1.1%	0.8%	7.1	0.83	6.0%	1.09	11.7%	(7.3%)	277.40	20.77
▲ Ahli United Bank (B.S.C)	0.275	0.002	0.7%	2,413	10.0%	7.3%	11.1	2.05	4.2%	0.83	18.5%	49.7%	2,594.28	672.13
= Warba Bank	0.251	0.000	0.0%	377	1.6%	1.1%	26.8	1.83	0.0%	0.92	6.8%	19.5%	656.49	158.82
▼ Mezzan Holding Co.	0.531	(0.002)	(0.4%)	165	0.7%	0.5%	20.3	1.52	3.0%	0.52	7.5%	6.2%	36.65	17.68
▲ Integrated Holding Co.	0.436	0.002	0.5%	96	0.4%	0.3%	8.5	1.48	9.2%	0.46	17.4%	(48.1%)	57.93	33.94
<b>Subtotal- Premier Market Stocks</b>	<b>5,705.88</b>	<b>16.23</b>	<b>0.29%</b>	<b>24,152</b>	<b>100%</b>	<b>73%</b>	<b>14.9</b>	<b>1.83</b>	<b>3.41%</b>		<b>12.3%</b>	<b>12.3%</b>	<b>12,552.42</b>	<b>5,149.08</b>
<b>Remaining of the Market</b>				<b>8,868</b>		<b>27%</b>	<b>17.7</b>	<b>0.83</b>	<b>4.44%</b>		<b>4.7%</b>		<b>17,310.08</b>	<b>1,075.73</b>

**Boursa Kuwait Daily Bulletin**

Thursday, October 10, 2019

Company	Reuters Ticker	Valuation Multiples				Price (KWD)		MKT Cap (KWD Mn.)	52 Weeks High (KWD)	52 Weeks Low (KWD)	YTD-19 Return #	Daily Trading Data		YTD-19	
		Trailing P/E (X)	Trailing P/BV (X)	Dividend Yield	Beta	Closing	DTD Change					Volume (Shrs.)	Value (KWD)	Capital Turnover	ROE
= Senergy Holding Co.	SENE.KW	NM	0.27	0.00%	1.37	0.020	0.000	3.9	0.034	0.017	(36.7%)	0	0	7.1%	NM
= Independent Petroleum Group	IPGK.KW	12.3	0.86	5.36%	0.34	0.430	0.000	81.0	0.490	0.379	7.2%	350	151	3.0%	7.0%
= National Petroleum Services Co.	NAPS.KW	8.8	3.13	6.18%	0.20	1.099	0.000	109.9	1.170	0.825	19.5%	0	0	0.8%	35.5%
▲ The Energy House Co.	ENER.KW	NM	0.54	0.00%	0.86	0.019	0.001	14.2	0.047	0.017	(47.9%)	63,191	1,173	2.9%	NM
▲ Gulf Petroleum Investment	GPIK.KW	NM	0.21	0.00%	1.24	0.019	0.000	8.8	0.033	0.019	(34.2%)	1,430,954	27,284	130.2%	NM
= Burgan Co. for Drilling, Tdg. & Maint. *	ABAR.KW	10.6	0.37	0.00%	NA	0.098	0.000	23.8	0.115	0.085	3.3%	0	0	0.5%	3.5%
<b>Oil &amp; Gas</b>		<b>17.0</b>	<b>0.88</b>	<b>4.61%</b>				<b>241.6</b>			<b>6.2%</b>	<b>1,494,495</b>	<b>28,608</b>		<b>5.2%</b>
▼ Kuwait Foundry Co.	KFDC.KW	42.2	0.75	18.79%	0.42	0.453	(0.005)	32.8	0.510	0.175	11.5%	8,824	4,017	33.4%	1.8%
▲ Boubyan Petrochemicals Co.*	BPCC.KW	38.2	1.42	6.45%	0.70	0.754	0.001	403.3	1.070	0.850	(22.7%)	296,973	225,567	13.5%	3.7%
= Al Kout for Industrial Projects Co.	ALKK.KW	13.6	2.75	5.88%	0.05	0.850	0.000	85.8	0.850	0.303	1.2%	0	0	0.0%	20.2%
▼ Qurain Petrochemical Industries Co. *	ALQK.KW	9.7	0.80	4.93%	0.67	0.307	(0.002)	337.5	0.415	0.341	(14.7%)	81,556	25,060	8.5%	8.2%
<b>Basic Materials</b>		<b>16.4</b>	<b>1.10</b>	<b>6.27%</b>				<b>859.2</b>			<b>(16.7%)</b>	<b>387,353</b>	<b>254,644</b>		<b>6.7%</b>
▲ Specialities Group Holding Co.	SPEC.KW	6.4	0.36	0.00%	0.35	0.070	0.000	10.5	0.082	0.060	2.5%	50	4	28.8%	5.7%
▼ Kuwait Cement Co.	KCEM.KW	33.5	0.94	5.61%	0.42	0.260	(0.001)	190.7	0.380	0.327	(31.4%)	1,475	384	0.5%	2.8%
= Gulf Cable & Electrical Ind. Co.	CABL.KW	15.4	0.58	5.83%	1.06	0.463	0.000	97.2	0.495	0.346	31.9%	189,650	87,704	36.7%	3.8%
▼ Heavy Eng'g Ind. & Shipbuilding Co.	SHIP.KW	7.0	1.28	7.48%	0.47	0.401	(0.004)	72.3	0.487	0.370	(7.2%)	746,675	299,565	51.9%	18.3%
▼ Kuwait Portland Cement Co.	PCEM.KW	10.4	1.59	9.17%	0.50	1.090	(0.011)	109.2	1.459	0.149	(4.2%)	10,213	11,132	9.5%	15.3%
= Shuaiba Industrial Co.	PAPE.KW	23.6	0.91	6.16%	0.18	0.160	0.000	16.1	0.217	1.20%	(14.9%)	0	0	0.2%	3.8%
= Metal & Recycling Co.	MRCK.KW	NM	0.43	0.00%	NA	0.052	0.000	5.2	0.089	1.20%	(17.5%)	0	0	0.6%	NM
= ACICO Industries Co.	ACIC.KW	NM	0.43	3.77%	0.40	0.132	0.000	41.9	0.207	0.150	(21.0%)	0	0	8.1%	NM
= Hilal Cement Co.	HCKK.KW	19.1	0.69	16.67%	0.17	0.090	0.000	9.1	0.146	0.067	(19.6%)	0	0	1.0%	3.6%
= National Industries Co.	NIBM.KW	16.5	0.73	5.84%	0.19	0.165	0.000	59.4	0.202	0.165	(17.5%)	0	0	0.9%	4.4%
▲ Equipment Holding Co.	EQUI.KW	NM	0.38	0.00%	1.32	0.017	0.002	2.3	0.032	0.025	(36.7%)	530,526	9,035	29.1%	NM
= National Co. for Consumer Industries	NCCI.KW	NM	0.61	0.00%	NA	0.055	0.000	5.0	0.065	0.065	25.0%	0	0	0.4%	0.3%
▼ Salbookh Trading Co.	SALB.KW	NM	0.50	0.00%	0.78	0.041	(0.000)	4.3	0.052	0.036	1.8%	78,625	3,157	59.1%	NM
= Agility (PWC Logistics)	AGLT.KW	15.5	1.27	1.66%	1.48	0.740	0.000	1,304.6	0.943	0.305	6.1%	392,890	290,827	15.7%	8.2%
= Educational Holding Group*	EDUK.KW	11.8	1.91	4.76%	0.15	0.315	0.000	77.3	0.338	0.054	1.6%	0	0	0.8%	16.2%
▼ National Cleaning Co.	CLEA.KW	8.7	0.42	8.17%	0.92	0.059	(0.000)	14.8	0.072	0.053	3.5%	30,626	1,706	6.4%	4.8%
▼ Kuwait & Gulf Link Transport Co.	KGLK.KW	11.0	0.29	6.91%	0.90	0.069	(0.002)	19.1	0.104	0.090	(28.0%)	204,250	13,990	16.6%	2.6%
= Kuwait Co. For Process Plant Const. & Cont.	KPCP.KW	5.2	0.87	9.12%	0.32	0.212	0.000	21.3	0.259	0.220	(7.8%)	0	0	3.1%	16.7%
▼ Humansoft Holding Co.	HUMN.KW	11.1	6.17	5.92%	0.42	3.109	(0.036)	380.0	3.500	2.996	(5.2%)	129,452	406,425	22.3%	55.5%
= Gulf Franchising Co.	GFCI.KW	NM	1.92	0.00%	NA	0.160	0.000	6.4	0.249	0.009	128.6%	0	0	0.0%	NM
▼ National Shooting Co.	SHOOTING.KW	NM	0.15	0.00%	1.71	0.010	(0.000)	2.8	0.018	0.015	(37.5%)	55,918	547	17.8%	NM
= Combined Group Contracting Co.	CGCK.KW	6.7	0.81	8.67%	0.10	0.230	0.000	37.6	0.392	0.295	(28.1%)	509,696	116,796	106.3%	12.0%
= United Projects Group	UPAC.KW	8.1	1.01	3.71%	0.02	0.437	0.000	71.9	0.658	0.217	(31.2%)	0	0	0.6%	12.5%
▲ ALAFCO Aviation Lease & Finance Co.*	ALAF.KW	14.9	0.81	3.75%	0.41	0.267	0.001	254.2	0.372	0.054	(23.5%)	122,687	32,725	13.3%	5.4%
▼ Mubarrad Holding Co.	MBRD.KW	5.6	0.48	8.35%	0.85	0.059	(0.000)	9.6	0.080	0.035	(9.4%)	443	25	43.0%	8.6%
▼ KGL Logistics Co.	LOGK.KW	5.0	0.25	0.00%	0.79	0.035	(0.001)	25.7	0.044	0.040	(13.4%)	1,144,168	40,288	46.9%	5.1%
▲ Integrated holding Co.	INTEGRATED.KW	8.5	1.48	9.17%	0.46	0.436	0.002	95.9	0.890	0.720	(48.1%)	1,537,604	673,307	26.3%	17.4%
= Sharjah Cement Co.	SCEM.KW	29.1	0.32	13.11%	0.42	0.061	0.000	37.1	0.087	0.052	(29.8%)	0	0	0.8%	1.1%
▲ Gulf Cement Co.	GCEM.KW	NM	0.55	14.41%	0.37	0.056	0.000	45.6	0.078	0.052	(18.3%)	104,200	5,782	1.3%	NM
▲ Umm Al-Qaiwain General Investments Co.	QIC.KW	13.0	0.39	11.40%	0.24	0.061	0.008	22.3	0.091	0.044	(7.7%)	193,010	11,731	0.8%	3.0%
= Fujairah Cement Industries Co.	FCEM.KW	23.2	0.21	11.76%	0.57	0.051	0.000	18.1	0.065	0.053	(19.7%)	0	0	7.2%	0.9%
▲ Ras-Al-Khaimah for White Cement Co.	RKWC.KW	33.8	0.56	7.25%	0.21	0.069	0.008	34.5	0.085	0.059	(7.9%)	164,446	10,774	0.6%	1.7%
<b>Industrials</b>		<b>14.3</b>	<b>1.01</b>	<b>4.36%</b>				<b>3,102.1</b>			<b>(8.9%)</b>	<b>6,146,604</b>	<b>2,015,903</b>		<b>7.1%</b>

**Boursa Kuwait Daily Bulletin**

Thursday, October 10, 2019

Company	Reuters Ticker	Valuation Multiples				Price (KWD)		MKT Cap (KWD Mn.)	52 Weeks High (KWD)	52 Weeks Low (KWD)	YTD-19 Return #	Daily Trading Data		YTD-19	
		Trailing P/E (X)	Trailing P/BV (X)	Dividend Yield	Beta	Closing	DTD Change					Volume (Shrs.)	Value (KWD)	Capital Turnover	ROE
= Palms Agro Production Co.	PAPK.KW	NM	0.46	16.92%	0.27	0.059	0.000	3.1	0.076	0.047	(1.7%)	0	0	0.8%	NM
= Livestock Transport & Trading Co.	CATT.KW	NM	1.02	2.56%	0.38	0.189	0.000	40.9	0.202	0.019	0.5%	0	0	2.0%	NM
▼ Danah Alsafat Foodstuff Co.	DANK.KW	NM	0.22	0.00%	0.57	0.019	(0.001)	2.1	0.043	0.036	(49.9%)	1,706,350	33,278	104.6%	NM
▼ Mezzan Holding Co.	MEZZ.KW	20.3	1.52	2.96%	0.52	0.531	(0.002)	165.3	0.655	0.431	6.2%	5,611	2,978	11.8%	7.5%
<b>Consumer Goods</b>		<b>56.8</b>	<b>1.28</b>	<b>3.05%</b>				<b>211.4</b>			<b>3.6%</b>	<b>1,711,961</b>	<b>36,256</b>		<b>2.3%</b>
= Advanced Technology Co.	ATCK.KW	29.8	2.34	1.67%	NA	0.900	0.000	135.0	1.000	0.067	(10.0%)	0	0	0.0%	7.9%
= Yiacco Medical Co.	YIAC.KW	NM	12.28	0.00%	0.57	0.067	0.000	12.1	0.128	0.080	(37.9%)	0	0	0.0%	NM
= Al-Maidan Clinic For Oral Health Services Co.	MIDAN.KW	48.1	8.91	0.40%	0.00	1.240	0.000	310.0	1.260	1.080	3.3%	0	0	0.2%	18.5%
<b>Health Care</b>		<b>NM</b>	<b>4.89</b>	<b>0.77%</b>				<b>457.1</b>			<b>(2.6%)</b>	<b>0</b>	<b>0</b>		<b>3.7%</b>
▲ Kuwait National Cinema Co.	KCIN.KW	10.4	1.08	5.76%	0.17	0.800	0.049	80.9	1.090	0.830	(25.2%)	12,025	9,562	0.5%	10.4%
= Kuwait Hotels Co.	KHOT.KW	NM	1.17	0.00%	NA	0.100	0.000	5.8	0.130	0.040	(23.1%)	0	0	0.0%	NM
= Sultan Center Food Products Co.	SCFK.KW	NM	0.58	0.00%	0.66	0.044	0.000	25.4	0.062	0.013	(16.9%)	0	0	11.4%	NM
= Kuwait Cable Vision Co.	KWTV.KW	NM	0.61	0.00%	0.37	0.017	0.000	0.6	0.033	0.008	(15.0%)	0	0	2.4%	NM
= IFA Hotels & Resorts Co.*	IFAH.KW	NM	0.87	0.00%	0.14	0.052	0.000	33.0	0.097	0.054	(41.7%)	0	0	0.6%	NM
= Oula Fuel Marketing Co.	OULA.KW	12.2	0.67	4.25%	0.44	0.116	0.000	46.9	0.132	0.050	(1.7%)	3,782	439	4.7%	5.5%
▲ Kuwait Resorts Co.	MUNK.KW	8.3	0.39	9.04%	0.70	0.055	0.001	10.9	0.067	0.054	(1.8%)	23,833	1,318	48.1%	4.7%
▲ Jazeera Airways Co.	JAZK.KW	17.4	6.36	3.52%	0.28	0.995	0.009	199.0	1.000	0.114	36.3%	633,510	624,716	11.8%	36.6%
= Soor Fuel Marketing Co.	SOOR.KW	13.8	0.72	4.27%	0.39	0.116	0.000	46.9	0.129	0.110	0.9%	2,047	238	4.1%	5.3%
= Future Kid Entertainment and R.E Co.	KIDK.KW	12.6	0.50	14.09%	NA	0.084	0.000	9.8	0.135	0.089	(11.6%)	0	0	3.0%	4.0%
▲ Al Rai Media Group Co.	ALRA.KW	NM	0.72	NM	0.48	0.043	0.003	10.0	0.089	0.041	(29.5%)	116,193	5,016	5.0%	NM
= Jiyad Holding Co	JIYAD.KW	10.3	0.40	0.00%	0.67	0.044	0.000	15.3	0.087	0.064	(38.9%)	0	0	43.1%	3.9%
▲ Al Eid Food Co.	ALEID.KW	4.0	0.33	0.00%	0.03	0.056	0.001	5.6	0.081	0.060	(15.2%)	10,000	560	3.4%	8.2%
<b>Consumer Services</b>		<b>NM</b>	<b>1.10</b>	<b>4.82%</b>				<b>490.1</b>			<b>(4.2%)</b>	<b>801,390</b>	<b>641,848</b>		<b>NM</b>
▲ Zain	ZAIN.KW	11.4	1.94	5.47%	1.63	0.548	0.004	2,371.2	0.603	0.435	22.0%	3,550,165	1,945,321	18.7%	17.0%
▲ National Mobile Telecom Co.	OORE.KW	10.4	0.65	6.92%	0.51	0.718	0.006	361.9	0.783	0.010	0.6%	16,179	11,593	2.0%	6.2%
▲ AAN digital services Co.	AAN.KW	19.0	0.50	0.00%	1.62	0.017	0.000	14.8	0.021	0.016	(2.3%)	2,245,491	37,749	47.1%	2.6%
▲ Kuwait Telecommunication Co.	VIVA.KW	8.0	1.95	5.33%	0.69	0.750	0.015	374.6	0.899	0.707	(6.3%)	49,528	36,747	1.9%	24.3%
<b>Telecommunications</b>		<b>10.8</b>	<b>1.56</b>	<b>5.60%</b>				<b>3,122.5</b>			<b>14.9%</b>	<b>5,861,363</b>	<b>2,031,411</b>		<b>14.5%</b>
▲ National Bank of Kuwait	NBKK.KW	15.7	1.95	3.46%	1.32	0.949	0.003	6,191.3	1.024	0.270	19.5%	4,720,286	4,477,929	14.1%	12.4%
▲ Gulf Bank	GBKK.KW	15.7	1.36	3.42%	0.93	0.278	0.002	847.4	0.330	0.246	10.3%	17,981,440	4,973,590	70.3%	8.6%
= Commercial Bank of Kuwait	CBKK.KW	14.8	1.37	3.61%	0.68	0.501	0.000	998.0	0.700	0.295	10.2%	0	0	2.4%	9.2%
= Ahli Bank of Kuwait	ABKK.KW	10.6	0.82	4.64%	0.61	0.299	0.000	484.1	0.350	0.285	1.4%	0	0	1.7%	7.7%
▼ Ahli United Bank - Kuwait	BKME.KW	12.5	1.54	3.99%	0.79	0.322	(0.002)	664.2	0.369	0.248	13.8%	66,928	21,545	5.8%	12.3%
▲ Kuwait International Bank	KIBK.KW	15.7	1.06	3.54%	1.00	0.269	0.003	290.2	0.343	0.228	6.0%	4,747,680	1,269,642	70.2%	6.8%
▲ Burgan Bank	BURG.KW	10.5	1.08	3.70%	0.98	0.308	0.001	808.5	0.405	0.263	16.3%	3,540,739	1,087,202	22.0%	10.3%
▲ Kuwait Finance House	KFH.KW	19.8	2.52	2.64%	1.59	0.681	0.001	4,751.0	0.800	0.500	22.6%	6,748,804	4,587,804	21.1%	12.7%
= Boubyan Bank	BOUK.KW	27.4	2.95	1.18%	0.93	0.562	0.000	1,620.9	0.630	0.215	21.2%	944,282	531,649	6.8%	10.8%
= Warba Bank	WARB.KW	26.8	1.83	0.00%	0.92	0.251	0.000	376.5	0.265	0.205	19.5%	1,096,959	275,839	43.8%	6.8%
▲ Ahli United Bank - Bahrain	AUBK.KW	11.1	2.05	4.22%	0.83	0.275	0.002	2,413.0	0.299	0.019	49.7%	6,560,151	1,801,352	29.6%	18.5%
= Ithmaar Bank	ITHMR.KW	NM	2.38	0.00%	1.41	0.022	0.000	67.6	0.031	0.024	(10.8%)	0	0	4.9%	NM
<b>Banks</b>		<b>15.8</b>	<b>1.87</b>	<b>3.15%</b>				<b>19,512.6</b>			<b>21.2%</b>	<b>46,407,269</b>	<b>19,026,554</b>		<b>11.8%</b>



**Boursa Kuwait Daily Bulletin**

Thursday, October 10, 2019

Company	Reuters Ticker	Valuation Multiples				Price (KWD)		MKT Cap (KWD Mn.)	52 Weeks High (KWD)	52 Weeks Low (KWD)	YTD-19 Return #	Daily Trading Data		YTD-19	
		Trailing P/E (X)	Trailing P/BV (X)	Dividend Yield	Beta	Closing	DTD Change					Volume (Shrs.)	Value (KWD)	Capital Turnover	ROE
= Kuwait Insurance Co.	KINS.KW	5.8	0.63	7.44%	0.03	0.320	0.000	62.1	0.427	0.310	(11.1%)	11,501	3,680	2.4%	10.9%
= Gulf Insurance Group	GINS.KW	9.5	1.40	5.07%	0.04	0.680	0.000	127.2	0.730	0.401	3.8%	0	0	4.5%	14.8%
▲ Ahleiah Insurance Co.	AINS.KW	8.7	0.84	8.00%	0.18	0.430	0.001	86.0	0.450	0.056	0.7%	25,000	10,750	2.3%	9.6%
▼ Warba Insurance Co.	WINS.KW	7.4	0.28	0.00%	0.55	0.063	(0.007)	10.8	0.085	0.061	(5.3%)	10,190	644	2.3%	3.9%
= Kuwait Reinsurance Co.	KWRE.KW	6.9	0.58	2.97%	0.01	0.158	0.000	29.8	0.198	0.036	(14.1%)	0	0	0.3%	8.4%
= First Takaful Insurance Co.	FTIK.KW	4.8	0.43	0.00%	0.11	0.040	0.000	4.3	0.053	0.027	(9.3%)	0	0	1.7%	8.8%
= Wethaq Takaful Insurance Co.	WETH.KW	68.9	0.27	0.00%	0.67	0.028	0.000	3.1	0.045	0.024	0.4%	0	0	15.3%	0.4%
= Bahrain Kuwait Insurance Co.	BKIK.KW	10.0	0.99	12.50%	0.04	0.200	0.000	28.6	N/A	N/A	0.0%	0	0	0.0%	9.9%
<b>Insurance</b>		<b>8.1</b>	<b>0.82</b>	<b>6.37%</b>				<b>351.9</b>			<b>(2.3%)</b>	<b>46,691</b>	<b>15,075</b>		<b>10.1%</b>
▼ Sokouk Holding Co.	SHCK.KW	NM	0.37	0.00%	1.39	0.030	(0.002)	17.7	0.048	0.038	(24.3%)	23,735	713	33.8%	NM
▲ Kuwait Real Estate Co.	KREK.KW	9.5	0.59	0.00%	1.30	0.083	0.002	78.8	0.090	0.044	60.4%	27,712,232	2,278,564	66.5%	6.2%
▼ United Real Estate Co.	UREK.KW	NM	0.36	0.00%	0.64	0.060	(0.001)	71.3	0.066	0.058	0.0%	53,000	3,180	2.3%	NM
▼ National Real Estate Co.	NREK.KW	10.5	0.41	0.00%	1.32	0.079	(0.001)	106.9	0.100	0.080	(13.7%)	39,605	3,097	13.7%	3.9%
= Salhia Real Estate Co.	SREK.KW	10.5	1.14	5.84%	0.31	0.330	0.000	169.2	0.350	0.324	0.0%	100,000	33,000	4.3%	10.9%
= Tamdeen Real Estate Co.	TAMK.KW	16.2	0.69	3.49%	0.25	0.278	0.000	120.1	0.400	0.123	(20.6%)	0	0	0.5%	4.2%
= Ajial Real Estate Entertainment Co.	AREC.KW	13.0	0.20	3.80%	0.34	0.131	0.000	24.3	0.152	0.031	(3.0%)	5,500	721	3.2%	1.5%
= Al Massaleh Real Estate Co.	MREC.KW	NM	0.40	0.00%	0.41	0.038	0.000	9.0	0.044	0.023	3.8%	0	0	3.7%	NM
▼ Arab Real Estate Co.	ARAB.KW	NM	0.23	0.00%	1.31	0.025	(0.001)	12.9	0.035	0.027	(12.2%)	147,890	3,827	27.8%	NM
▼ AL-Enma'a Real Estate Co.*	ENMA.KW	NM	0.47	0.00%	0.76	0.047	(0.001)	21.3	0.050	0.030	44.3%	530,619	25,225	75.3%	NM
▲ Mabaneer Co.	MABK.KW	13.9	1.74	1.52%	1.04	0.740	0.003	771.5	0.800	0.074	29.4%	154,088	114,011	12.0%	12.5%
= Injazat Real Estate Development Co.	INJA.KW	6.8	0.47	8.31%	0.48	0.082	0.000	28.3	0.090	0.008	(4.7%)	0	0	2.6%	6.9%
▲ Investors Holding Group Co.	INVK.KW	NM	0.21	0.00%	1.55	0.008	0.000	5.2	0.014	0.012	(32.0%)	151,745	1,219	133.8%	NM
= International Resorts Co.	IRCK.KW	2.7	0.22	0.00%	1.35	0.014	0.000	2.2	0.030	0.018	(36.6%)	0	0	3.9%	8.3%
= The Commercial Real Estate Co.	TIJK.KW	12.4	0.57	5.43%	0.76	0.093	0.000	163.0	0.102	0.030	1.1%	20	2	8.1%	4.6%
= Sanam Real Estate Co.	SANK.KW	NM	0.44	0.00%	0.44	0.035	0.000	4.3	0.050	0.028	0.9%	0	0	3.4%	NM
= A'ayan Real Estate Co.	AYRE.KW	4.0	0.38	7.54%	0.85	0.065	0.000	27.1	0.068	0.055	13.4%	0	0	17.6%	9.7%
= Aqar Real Estate Investment Co.	AQAR.KW	15.5	0.64	6.03%	NA	0.075	0.000	17.6	0.082	0.023	22.5%	123,666	9,281	3.4%	4.1%
= Kuwait Real Estate Holding Co.	ALAQ.KW	50.9	0.46	0.00%	0.98	0.027	0.000	5.2	0.032	0.020	8.0%	0	0	3.7%	0.9%
▲ MAZAYA Holding Co.	MAZA.KW	11.5	0.42	14.38%	1.33	0.056	0.001	38.2	0.078	0.070	(20.8%)	795,124	43,860	51.3%	3.6%
▲ Tijara Real Estate & Investment Co.	TIJA.KW	14.1	0.35	5.56%	0.64	0.036	0.001	13.3	0.056	0.017	(26.5%)	700	25	2.6%	2.4%
▲ Al TAMEER Real Estate Investment Co.	AMAR.KW	10.7	0.38	0.00%	1.32	0.027	0.000	6.5	0.046	0.026	(3.9%)	243,770	6,431	150.8%	3.5%
= Arkan Al-Kuwait Real Estate Co. *	ARKK.KW	16.6	0.56	10.06%	0.34	0.080	0.000	20.0	0.091	0.078	(4.8%)	0	0	3.2%	3.4%
= Al-Argan International Real Estate Co.	ARGK.KW	52.3	0.33	4.42%	0.38	0.109	0.000	28.9	0.176	0.012	(19.9%)	0	0	0.1%	0.6%
▲ Abyaar Real Estate Development Co.	ABYR.KW	NM	0.21	0.00%	1.56	0.012	0.000	13.7	0.019	0.015	(18.4%)	1,170,720	14,208	94.2%	NM
= Munshaat Real Estate Projects Co.	MUNS.KW	NM	0.55	0.00%	0.98	0.077	0.000	24.8	0.120	0.026	(23.0%)	0	0	4.4%	NM
▲ First Dubai For Real Estate Development	FIRST.KW	15.3	0.42	0.00%	1.54	0.031	0.000	31.3	0.043	0.035	(17.0%)	422,721	13,104	9.1%	2.8%
= Kuwait Business Town Real Estate Co.	KBTK.KW	8.1	0.37	7.33%	1.27	0.039	0.000	24.5	0.049	0.044	(9.4%)	0	0	6.4%	4.5%
= Real Estate Asset Management Co.	REAM.KW	20.9	0.64	4.97%	0.03	0.095	0.000	10.5	0.218	0.033	(44.4%)	0	0	2.5%	3.1%
▲ MENA Real Estate Co. *	MENK.KW	NM	0.26	0.00%	0.93	0.038	0.000	5.2	0.050	0.015	6.7%	442,030	16,518	284.6%	NM
▼ Al Mudon International Real Estate Co.	ALMK.KW	NM	0.13	0.00%	1.32	0.018	(0.000)	1.8	0.032	0.020	(38.9%)	201,000	3,458	36.3%	NM
= Real Estate Trade Centers Co.	MARA.KW	NM	0.11	0.00%	0.51	0.023	0.000	3.2	0.037	0.019	3.2%	0	0	23.3%	NM
▼ Kuwait Remal Real Estate Co.	REMAL.KW	NM	0.32	0.00%	1.00	0.024	(0.001)	7.2	0.050	0.029	(43.8%)	325,418	7,578	48.4%	NM
▼ Mashaer Holding Co.	MASHAER.KW	NM	0.54	0.00%	0.29	0.069	(0.001)	12.4	0.088	0.015	(17.6%)	74,148	5,047	189.8%	NM
= Effect Real Estate Co.	EFFECT.KW	NM	0.29	0.00%	0.81	0.021	0.000	1.7	0.026	0.009	125.3%	0	0	17.3%	NM
▲ Ajwan Gulf Real Estate Co.	AJWN.KW	NM	0.25	0.00%	0.47	0.014	0.000	3.0	0.023	0.017	(22.5%)	15,813,873	227,135	143.8%	NM
= Al Masaken Intl. Real Estate Dev. Co.	MASKN.KW	NM	0.89	0.00%	0.32	0.074	0.000	7.4	0.100	0.036	18.4%	0	0	0.2%	NM
= Dalqan Real Estate Co.	DALQ.KW	NM	2.73	0.00%	NA	0.350	0.000	17.5	N/A	N/A	0.0%	0	0	0.0%	2.1%
= Dar Al Thuraya Real Estate Co.	THURY.KW	20.9	1.53	0.00%	NA	0.162	0.000	23.7	0.198	0.000	(26.4%)	0	0	0.0%	7.3%
<b>Real Estate</b>		<b>35.5</b>	<b>0.68</b>	<b>2.71%</b>				<b>1,950.4</b>			<b>4.7%</b>	<b>48,531,604</b>	<b>2,810,206</b>		<b>1.9%</b>

**Boursa Kuwait Daily Bulletin**

Thursday, October 10, 2019

Company	Reuters Ticker	Valuation Multiples				Price (KWD)		MKT Cap (KWD Mn.)	52 Weeks High (KWD)	52 Weeks Low (KWD)	YTD-19 Return #	Daily Trading Data		YTD-19	
		Trailing P/E (X)	Trailing P/BV (X)	Dividend Yield	Beta	Closing	DTD Change					Volume (Shrs.)	Value (KWD)	Capital Turnover	ROE
▲ Kuwait Investment Co.	KINV.KW	5.3	0.63	7.20%	0.66	0.138	0.002	76.1	0.147	0.117	6.2%	20,010	2,721	20.3%	11.9%
= Commercial Facilities Co.	FACI.KW	7.7	0.68	8.05%	0.56	0.200	0.000	107.4	0.211	0.016	14.3%	20,000	3,989	5.0%	8.8%
▲ Int'l Financial Advisors Co.	IFIN.KW	NM	0.66	0.00%	1.66	0.053	0.000	14.1	0.056	0.021	88.6%	379,978	20,075	99.4%	NM
▲ National Investment Co.	NINV.KW	9.7	0.60	5.14%	1.32	0.124	0.002	108.7	0.145	0.070	50.3%	784,225	95,859	28.3%	6.2%
▲ Kuwait Projects Co.(Holding)	KPRO.KW	14.7	1.71	4.15%	0.75	0.219	0.001	438.0	0.235	0.030	5.3%	1,619,219	355,974	9.4%	11.6%
▲ Coast Invest. & Development Co.	COAS.KW	15.5	0.37	0.00%	1.84	0.033	0.001	20.3	0.045	0.028	(2.1%)	328,044	10,459	15.5%	2.4%
▼ The Securities House Co.	SECH.KW	NM	0.47	0.00%	1.25	0.042	(0.000)	19.0	0.062	0.046	(20.4%)	189,200	7,861	50.2%	0.4%
= Arzan Financial Group For Fin. & Invest.	ARZA.KW	3.9	0.21	0.00%	1.13	0.026	0.000	21.0	0.038	0.025	(12.4%)	1,655,571	43,134	135.8%	5.5%
▼ Kuwait Financial Centre	MARKZ.KW	9.8	0.47	5.49%	0.67	0.091	(0.003)	43.8	0.110	0.032	(9.0%)	400,147	35,934	17.1%	4.8%
▲ Kuwait & M.E. Financial Inv. Co.	KMEF.KW	64.5	1.27	0.00%	0.84	0.075	0.004	19.7	0.108	0.026	133.4%	1,248,433	91,635	58.1%	2.0%
= Al-Aman Investment Co.	AMAN.KW	8.5	0.49	0.00%	0.79	0.056	0.000	8.4	0.081	0.029	15.0%	0	0	87.1%	5.8%
▼ First Investment Co.	OLAK.KW	NM	0.22	0.00%	0.94	0.030	(0.000)	19.3	0.043	0.010	(25.3%)	2,732,318	80,679	127.8%	NM
▼ Al-Mal Investment Co.	MALK.KW	NM	0.40	0.00%	1.60	0.010	(0.000)	3.2	0.025	0.019	(46.1%)	3,864,684	37,839	39.4%	NM
▼ Gulf Investment House	GIHK.KW	1.3	0.49	0.00%	1.04	0.044	(0.001)	17.8	0.083	0.014	146.6%	38,856	1,703	10.3%	36.8%
▲ A'ayan Leasing & Investment Co.	AAYA.KW	NM	0.57	0.00%	1.41	0.055	0.000	44.9	0.061	0.031	48.0%	2,103,324	115,829	239.8%	0.1%
= Bayan Investment Co.	BAYK.KW	NM	0.45	0.00%	1.58	0.041	0.000	16.1	0.051	0.034	(15.1%)	0	0	4.7%	NM
= Osoul Investment Co.	OSUL.KW	8.1	0.59	7.93%	0.42	0.070	0.000	13.2	0.074	0.053	15.7%	0	0	4.2%	7.4%
▼ Kuwait Finance & Investment Co.	KFSK.KW	NM	0.38	0.00%	0.55	0.047	(0.001)	15.0	0.055	0.033	36.8%	52,066	2,421	57.1%	0.4%
= KAMCO Investment Co.	KAMC.KW	8.0	0.75	0.00%	0.10	0.099	0.000	26.1	0.106	0.063	43.5%	0	0	2.2%	9.4%
▲ National International Holding Co.	NIHK.KW	6.3	0.35	7.11%	0.98	0.065	0.005	14.1	0.081	0.040	4.7%	36	2	8.4%	5.6%
▲ UniCap Investment and Finance	UNICAP.KW	NM	0.43	7.04%	0.65	0.042	0.000	10.1	0.085	0.058	(46.5%)	568,090	23,419	23.4%	NM
▼ Al Madar Finance & Investment Co.	MADR.KW	7.9	1.12	0.00%	0.43	0.113	(0.008)	24.2	0.180	0.010	(32.3%)	5,282,560	590,833	70.6%	14.2%
▲ Al-Deera Holding	DEER.KW	2.3	0.49	0.00%	1.48	0.013	0.001	2.5	0.026	0.016	(32.4%)	112,066	1,337	12.0%	20.9%
▼ Al Salam Group Holding Co.	SAGH.KW	NM	0.26	0.00%	1.59	0.030	(0.000)	8.2	0.043	0.013	(5.3%)	1,442,806	42,944	184.4%	NM
▼ Ekttab Holding Co.	EKTT.KW	NM	0.35	0.00%	1.28	0.016	(0.001)	4.9	0.024	0.019	(25.8%)	20,200	303	16.4%	NM
= Al Madina For Finance & Investment Co.	MADI.KW	NM	0.49	0.00%	1.25	0.016	0.000	6.5	0.027	0.020	(22.4%)	113,899	1,748	115.5%	NM
▲ NOOR Financial Investment Co.	NOOR.KW	1.7	0.70	5.53%	0.75	0.090	0.000	37.3	0.100	0.050	17.4%	11,432	992	52.5%	41.7%
= Tamdeen Investment Co.	TAMI.KW	11.8	0.46	3.64%	0.12	0.328	0.000	113.2	0.349	0.232	17.1%	0	0	0.8%	3.9%
= Kuwait Bahrain Int'l Exchange Co.	EXCH.KW	10.9	0.60	0.00%	NA	0.086	0.000	4.0	N/A	N/A	0.0%	0	0	0.0%	5.5%
▼ Kuwait Syrian Holding Co.	KSHC.KW	NM	0.29	9.68%	1.44	0.031	(0.003)	5.5	0.082	0.033	(22.5%)	1,064,001	32,908	57.8%	NM
= Asiya Capital Investment Co.	ASIYA.KW	NM	0.39	0.00%	0.85	0.035	0.000	27.6	0.039	0.030	1.5%	0	0	4.9%	0.3%
▼ Gulf North Africa Holding Co.	GNAH.KW	NM	0.77	0.00%	1.56	0.058	(0.001)	8.7	0.063	0.035	18.4%	50,000	2,900	26.7%	NM
▲ Amwah International Investment Co.	AMWA.KW	8.2	0.39	0.00%	0.63	0.039	0.004	7.0	0.087	0.056	(37.7%)	100	4	0.4%	4.7%
= Alimtiq Investment Group	ALIMK.KW	9.2	0.70	6.24%	0.87	0.123	0.000	139.4	0.147	0.124	(8.2%)	883,777	107,828	56.6%	7.6%
= Tamkeen Holding Co.	TAMKE.KW	NM	0.05	0.00%	NA	0.005	0.000	0.3	0.012	0.007	(47.5%)	0	0	12.2%	NM
▼ Manazel Holding Co.	MANK.KW	NM	0.63	0.00%	1.65	0.026	(0.000)	11.2	0.033	0.024	5.3%	126,000	3,324	18.7%	NM
▲ National Industries Group	NIND.KW	8.5	0.88	5.03%	1.36	0.227	0.001	324.1	0.261	0.151	50.9%	2,526,743	570,697	89.2%	10.4%
▲ Warba Capital Holding Co.	WARBACAP.KW	NM	1.04	0.00%	1.12	0.067	0.002	6.7	0.115	0.019	119.0%	22,724	1,495	20.0%	NM
= Arabi Holding Group Co.	AGHC.KW	68.4	0.62	0.00%	0.26	0.092	0.000	15.8	0.095	0.060	32.6%	30,000	2,745	8.8%	0.9%
▲ Privatization Holding Co.	KPPC.KW	NM	0.36	9.62%	1.25	0.052	0.001	31.7	0.065	0.013	(1.0%)	50,020	2,536	22.5%	NM
= Credit Rating & Collection Co.	TAHS.KW	NM	0.88	0.00%	0.04	0.030	0.000	4.9	0.037	0.019	32.3%	0	0	0.4%	NM
= Egypt Kuwait Holding Co.	EKHK.KW	19.3	3.34	4.00%	0.28	0.500	0.000	512.2	0.500	0.063	53.8%	0	0	0.2%	17.3%
= GFH Financial Group	GFH.KW	7.1	0.83	6.03%	1.09	0.071	0.000	262.1	0.100	0.060	(7.3%)	23,638	1,657	7.5%	11.7%
= Inovent	INOV.KW	7.2	0.43	8.06%	0.93	0.062	0.000	17.8	0.089	0.080	(22.5%)	0	0	8.2%	6.1%
= Al Bareeq Holding	BAREEQ.KW	48.0	1.15	0.00%	0.05	0.108	0.000	47.2	0.110	0.025	8.0%	0	0	0.0%	2.4%
= Amar For Finance and Leasing Co.	AMARF.KW	NM	0.52	0.00%	NA	0.045	0.000	9.0	0.066	0.035	9.8%	0	0	1.6%	NM
▲ Al-Manar Financing & Leasing Co.	ALMANAR.KW	21.7	0.38	0.00%	NA	0.040	0.001	12.3	0.075	0.000	(24.8%)	559,979	22,257	9.6%	1.7%
<b>Financial Services</b>		<b>12.1</b>	<b>0.82</b>	<b>4.28%</b>				<b>2,700.5</b>			<b>28.8%</b>	<b>28,324,146</b>	<b>2,316,039</b>		<b>6.8%</b>

**Boursa Kuwait Daily Bulletin**

Thursday, October 10, 2019

Company	Reuters Ticker	Valuation Multiples				Price (KWD)		MKT Cap (KWD Mn.)	52 Weeks High (KWD)	52 Weeks Low (KWD)	YTD-19 Return #	Daily Trading Data		YTD-19 Capital Turnover	ROE
		Trailing P/E (X)	Trailing P/BV (X)	Dividend Yield	Beta	Closing	DTD Change					Volume (Shrs.)	Value (KWD)		
= Automated Systems Co.	ASCK.KW	NM	0.56	5.56%	<b>0.00</b>	<b>0.072</b>	0.000	<b>7.2</b>	0.125	0.066	(33.4%)	0	0	0.7%	NM
= Osos Holding Group Co.	OSOS.KW	6.7	0.77	9.90%	<b>0.41</b>	<b>0.101</b>	0.000	<b>10.1</b>	0.118	0.087	(1.0%)	0	0	12.8%	11.6%
= Hayat Communications Co.	HAYK.KW	8.9	0.37	0.00%	<b>1.52</b>	<b>0.040</b>	0.000	<b>3.7</b>	0.100	0.025	(41.2%)	0	0	1.4%	4.2%
<b>Technology</b>		<b>11.9</b>	<b>0.58</b>	<b>6.67%</b>				<b>21.0</b>			<b>(23.1%)</b>	<b>0</b>	<b>0</b>		<b>4.9%</b>

<b>Boursa Kuwait</b>	<b>15.5</b>	<b>1.38</b>	<b>3.68%</b>		<b>33,020.4</b>		<b>13.8%</b>	<b>139,712,876</b>	<b>29,176,542</b>		<b>8.9%</b>
----------------------	-------------	-------------	--------------	--	-----------------	--	--------------	--------------------	-------------------	--	-------------

**Year-to-Date 2019 Top Movers & Most Active Stocks**

YTD Top % Gainers	Close (KWD)	Percent Change
Gulf Investment House	<b>0.044</b>	<b>146.6%</b>
Kuwait & M.E. Financial Inv. Co.	<b>0.075</b>	<b>133.4%</b>
Warba Capital Holding Co.	<b>0.067</b>	<b>119.0%</b>
Int'l Financial Advisors Co.	<b>0.053</b>	<b>88.6%</b>
Kuwait Real Estate Co.	<b>0.083</b>	<b>60.4%</b>

YTD Top % Losers	Close (KWD)	Percent Change
Danah Alsafat Foodstuff Co.	<b>0.019</b>	<b>(49.9%)</b>
Integrated holding Co.	<b>0.436</b>	<b>(48.1%)</b>
The Energy House Co.	<b>0.019</b>	<b>(47.9%)</b>
UniCap Investment and Finance	<b>0.042</b>	<b>(46.5%)</b>
Al-Mal Investment Co.	<b>0.010</b>	<b>(46.1%)</b>

YTD Most Active by Volume	Close (KWD)	Volume (Shrs.)
Ahli United Bank - Bahrain	<b>0.275</b>	<b>2,594,276,592</b>
Gulf Bank	<b>0.278</b>	<b>2,143,159,076</b>
A'ayan Leasing & Investment Co.	<b>0.055</b>	<b>1,952,303,678</b>
Kuwait Finance House	<b>0.681</b>	<b>1,470,267,277</b>
National Industries Group	<b>0.227</b>	<b>1,272,984,382</b>

YTD Most Active by Value	Close (KWD)	Value (KWD)
Kuwait Finance House	<b>0.681</b>	<b>1,010,352,214</b>
National Bank of Kuwait	<b>0.949</b>	<b>863,461,303</b>
Ahli United Bank - Bahrain	<b>0.275</b>	<b>672,131,368</b>
Gulf Bank	<b>0.278</b>	<b>628,510,316</b>
Zain	<b>0.548</b>	<b>419,031,977</b>

\* Different Fiscal Year Company