

# LIVE WEBCAST AUCTION

PLANT CLOSED

## OREGON TOOL

4840 E 12th Street – Kansas City, MO 64127 | 3 Miles East of Downtown

**SALE DATE: WEDNESDAY, DECEMBER 4<sup>TH</sup> & THURSDAY, DECEMBER 5<sup>TH</sup> STARTING AT 9:00AM CT**

**INSPECTION:** Tuesday, December 3rd from 9:00 AM to 4:00 PM CT



**(4) AIDA Two-Point Gap Frame Presses**



**\$1M in HD Feed Equipment**



**Complete Toolroom**



**(10+) AIDA Single-Point Gap Frame Presses**



**Mitsubishi 2400R EDM**



# OREGON TOOL



**(15+) AIDA Gap Frame Presses from 66 Ton to 220 Ton as New as 2019**



**Feed Equipment: Uncoilers, Straighteners, Feeders as New as 2015**



**CNC Machinery: VMCs, HMCs, Mills**

**(20+) Robots**



**Toolroom Machinery: Lathes, Drills, Grinders, Saws, Welders**



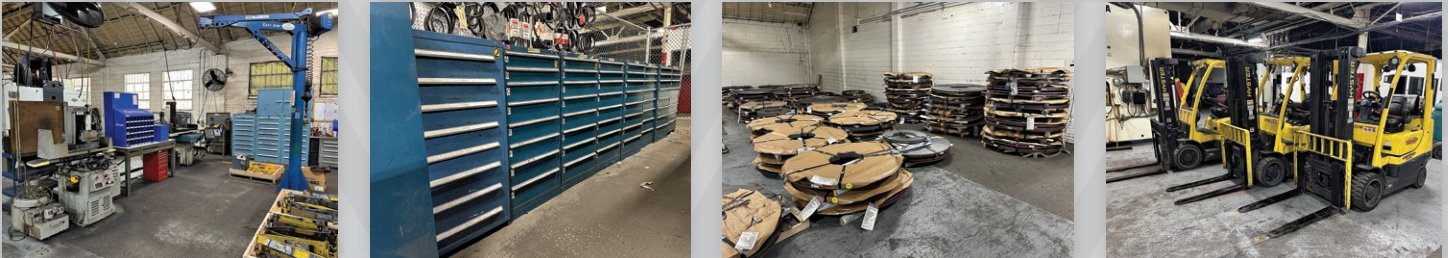
**2019 Mitsubishi EDM + Full Service Lab & Inspection Department**



# WEDNESDAY, DECEMBER 4<sup>TH</sup> & THURSDAY, DECEMBER 5<sup>TH</sup> - 9:00AM CT



**Furnaces, Ovens, Washers & Blasters**



**Large Quantity Plant Support Assets, MRO, Raw Materials & More**

## AIDA GAP FRAME PRESSES

- (3) 220 Ton Aida Model NC2-2000(2)E Two-Point Gap Frame Mechanical Presses (New as 2014)
- (7) 220 Ton Aida Model NC1-2000(1)E Single-Point Gap Frame Mechanical Presses (New as 2017)
- 176 Ton Aida Model NC2-160(1) Two-Point Gap Frame Mechanical Press
- 165 Ton Aida Model NC1-1500(1)E Single-Point Gap Frame Mechanical Press (New 2019)
- 121 Ton Aida Model NC1-1100(1)E Single-Point Gap Frame Mechanical Press (New 2017)
- 88 Ton Aida Model NC1-80(2) Single-Point Gap Frame Mechanical Press
- 75 Ton Aida PP-XGC-75 SU(1) Gap Frame Punch Press
- 66 Ton Aida Model NC1-600(2) Single-Point Gap Frame Mechanical Press

## MORE GAP FRAME PRESSES & OTHER MISC. PRESSES

- 300 Ton PressIX Model 300C2R6 Back Geared Gap Frame Press
- 130 Ton PressIX Model 130 CNR 6 Back Geared Gap Frame Press
- 80 Ton Stamtec G1-80 Open Back Gap Frame Press
- 100 Ton L&J No. 100 OBI Press
- Minster 70-4 1/2 Gap Frame Mechanical Press
- 75 Ton USI Model 75 OBI

## FEEDERS, STRAIGHTENERS, UNCOILERS & RELATED

- (5) 6,000 LB x 18" COE Model CPR-DE-6018 Double End Coil Reels (New as 2015)
- (5) 0.187" x 8" COE Model CPPS-350-12 3-Roll Straighteners (New as 2015)
- (3) 0.187 x 8" COE CPRF-518 Combo Servo Feeder & 4-Roll Straightener (New as 2015)
- (2) Dallas DRFSH-612 Combo Feeder & 4-Roll Straightener

## DIE HANDLERS

- (4) Hansford Model 1020 & 1021 Die Handlers

## ROBOTS

- (4) Fanuc M-20iD 6-Axis Robots - New as 2021
- (2) Fanuc M-20iA 6-Axis Robots - New 2018
- (10+) Other Robots by Kuka & ABB

## CNC MACHINERY

- Yama Seiki Model AV-860APC CNC Horizontal Machining Center (New 2014)
- Kitamura Mycenter-3XiF CNC Horizontal Machining Center
- Haas VF-3D CNC Vertical Machining Center (2006)
- Haas VFT CNC Vertical Machining Center (2009)
- Fadal Model 914-15 CNC Vertical Machining Center
- (2) Trak Model DPMSX3P CNC Mills w/ SMX Controls (2013)

## TOOLROOM & MISC. MACHINERY

- 14" x 40" Republic Lagun RL-1440G-TW Lathe (2013)
- 3' Arm x 9" Column Carlton Radial Arm Drill
- Marvel 8-MARK II Vertical Band Saw
- 55 Ton Bolton M55 Ironworker
- (10+) Welders by Miller, Hypertherm & Others
- Blast Cabinets, Bandsaws, Drills, Etc.

## GRINDERS & RELATED

- 12" x 24" Okamoto Model ACC-1224DX Surface Grinder
- 12" x 24" Chevalier FSG-3A1224 Surface Grinder
- (2) 6" x 12" Chevalier FSG-2A618 Surface Grinders
- 10" x 24" KO LEE Model S1024P Surface Grinder
- Moore Model No. 3 Jig Grinder

## EDMS

- Mitsubishi MV2400R EDM (New 2019)
- Mitsubishi FX10K EDM

## OVENS, WASHERS & RELATED

- (2) Upton Automated Salt Bath Furnace Lines
- Thermidor Type FLM Natural Gas Furnace - 1,850 Degree Max Temp.
- (2) Steelman Model 444 BA-C Natural Gas Burn Off Ovens

- Viking Model 1200BB/12PDC Batch Style Belt Blaster
- Kemac Stainless Steel Pass Thru Belt Washer

## LAB & INSPECTION

- Instron/SATEC Model SI-1K3 Pendulum Impact Testing System
- Struers Discotom-100 Automatic Cut-Off Machine
- Struers Tegramin-30 Grinding & Polishing Machine
- Struers CitoPress-30 Mounting Press
- Struers Labotom-3 Cut Off
- Hardness Testers, Micrometers, Gauges, Granite Plates, Scales, Etc.

## STEEL COILS

- (80+) Steel Coils Weighing Over 240,000 LBS

## PLANT SUPPORT

- (4) 6,000 LB Hyster S60FT Solid Tire LPG Forklifts (New 2016)
- Tennant Model T12 Floor Scrubber
- MRO Department: Motors, Parts, Hardware & More
- Large Quantity Plant Support: Vidmar Cabinets, Two-Door Cabinets & Mapletop Workbenches, Dump Hoppers & More

## RARE FIND!

- (2) Eumuco RW1 & RW2 Roll Forging Machines



— LIVE WEBCAST —  
**AUCTION**

PLANT CLOSED

**OREGON TOOL**

4840 E 12th Street – Kansas City, MO 64127  
3 Miles East of Downtown

**SALE DATE: WEDNESDAY, DECEMBER 4<sup>TH</sup>  
& THURSDAY, DECEMBER 5<sup>TH</sup>**  
STARTING AT 9:00AM CT

**INSPECTION:** Tuesday, December 3rd from 9:00 AM to 4:00 PM CT



CIA-INDUSTRIAL.COM  
2020 DUNLAP ST.  
CINCINNATI, OH 45214  
513.241.9701



Major Stamping Facility: (15+) Aida Presses & HD Feed Equipment

**FIRST CLASS MAIL!**

PRE-SORT  
FIRST CLASS  
U.S. POSTAGE  
**PAID**  
CINCINNATI, OHIO  
PERMIT NO. 3593



**Important Mail**

TO BE DIRECTED TO THE ATTENTION OF EXECUTIVE PERSONNEL

• SALE DATE: WEDNESDAY, DECEMBER 4<sup>TH</sup> & THURSDAY, DECEMBER 5<sup>TH</sup> STARTING AT 9:00AM CT •

**LIVE WEBCAST AUCTION**

PLANT CLOSED

**OREGON TOOL**

4840 E 12th Street – Kansas City, MO 64127 | 3 Miles East of Downtown

**IMPORTANT NOTICE:**

Although information has been obtained from sources deemed reliable, the auctioneer makes no warranty or guarantee, expressed or implied, as to the accuracy of the information herein contained. It is for this reason that buyers should avail themselves of the opportunity to make inspection prior to the sale. This brochure is intended to provide general information of the equipment being offered and is subject to errors, omissions, additions or deletions. Please check with the Auctioneer's Office for a final listing. Items offered may or may not necessarily be sold as described and/or photographed in this brochure.

**AUCTIONEERS:**

Cincinnati Industrial Auctioneers, Inc.  
Jeff Luggen  
Joseph Luggen  
Ryan Luggen

**ASSOCIATIONS:**



**TERMS OF SALE:**

All equipment described herein will be sold "as is", "where is" to the highest bidder or bidders for cash in accordance with our Terms & Conditions. A deposit may be required to bid. All sales are subject to state and/or local taxes unless a signed exemption form is presented at the time of purchase. All sales are final and balance is due within 24 hours of the auction. All bidders must comply with our Terms & Conditions to participate in the auction, which is available on [www.cia-industrial.com](http://www.cia-industrial.com).

**18% BUYERS PREMIUM IN EFFECT FOR ALL PURCHASES**

**BIDDER INSTRUCTIONS:**

All bidders must register for this auction at: [www.bidspotter.com](http://www.bidspotter.com). Please register 24-hours in advance to get through the approval process.



CIA-INDUSTRIAL.COM  
2020 DUNLAP ST., CINCINNATI, OH 45214  
513.241.9701