

AI Arabi Daily MSM Report

No. of Issue: 650

Date:12/08/2012

Daily Summary	Current	Previous	Change	D/D	MTD	YTD
				%	%	%
AI Arabi Oman20 Index	976.74	970.81	5.93	0.61	1.89	(3.66)
AI Arabi GCC 50 Index	965.25	962.38	2.87	0.30	1.19	2.96
MSM 30	5,473.48	5,463.43	10.05	0.18	2.15	(3.89)
Volume(In 000)	17,842	40,734	(22891.85)	(56.20)		
Value traded (In RO 000)	6,566	7,132	(565.77)	(7.93)		

View of the MSM:

The MSM 30 index closed at 5,473.48 points, 0.18% up from the last trading session. 17 out of 43 stocks trading managed a green closing and 9 in the red zone. While 17 no changed 17.8 mn. shares traded during the day with the value reaching RO 6.6 mn. Financial sector closed at 6,203 points, Industry sector closed 6,654.8 points and the services sector closed at 2,604.94 points with percentage change of 0.52%, -0.13%, 0.15% respectively.

Top Gainers	Price	Chg	Chg	Top Co. - Value	Price	Value	Mkt.Share	Market Capitalization	
Companies	RO	RO	%	Companies	RO	in RO 000		(In Billion)	
FINANCIAL SERVICES	0.075	0.005	7.14	GOVERNMENT BONDS ISSUE 40	112.000	3,360.00	51.17%	OMR	USD
GOVERNMENT BONDS ISSUE 40TH	112.000	4.100	3.80	BANK MUSCAT	0.536	813.05	12.38%	7.05	18.19
GULF INVESTMENT SER.	0.082	0.003	3.80	GULF INVESTMENT SER.	0.082	318.35	4.85%		
AL HASSAN ENGINEERING	0.138	0.003	2.22	GLOBAL FINANCIAL INVESTMEN	0.095	280.00	4.26%		
GLOBAL FINANCIAL INVESTMENT	0.095	0.002	2.15	AL HASSAN ENGINEERING	0.138	210.83	3.21%		

Top Losers	Price	Chg	Chg	Top Co. - Volume	Price	Volume	Mkt.Share	No. of Companies		
Companies	RO	RO	%	Companies	RO	in 000		Increased	Decreased	Unchanged
NATIONAL MINERAL WATER	0.048	(0.004)	(7.69)	GULF INVESTMENT SER.	0.082	3,899.62	21.86%	↑	↓	≡
GULF INT. CHEMICALS	0.159	(0.005)	(3.05)	GLOBAL FINANCIAL INVESTMEN	0.095	2,950.91	16.54%	17	9	17
DHOFAR INT.DEV.AND INV. HOLE	0.381	(0.008)	(2.06)	BANK NIZWA	0.108	1,652.40	9.26%			
OMAN FISHERIES	0.104	(0.002)	(1.89)	AL HASSAN ENGINEERING	0.138	1,529.61	8.57%			
ASAFFA FOODS	0.450	(0.008)	(1.75)	BANK MUSCAT	0.536	1,516.07	8.50%			

Key Announcements

Event Date	Company	Event	Details

MSM 30 Companies with highest Free Float % *

Company	No. of Shares	Traded
TRANSULF IND. INV. HOLDING	66,875,000	92.40%
HSBC BANK OMAN	1,020,159,523	84.33%
GULF INT. CHEMICALS	21,000,000	81.72%
RENAISSANCE SERVICES	282,094,000	79.44%
DHOFAR INT. DEV.	200,000,000	71.42%

MSM 30 Companies with lowest Free Float % *

Company	No. of Shares	Traded
NBO	1,081,000,000	16.24%
OMANTEL	750,000,000	22.90%
A SAFFA FOODS	105,000,000	23.50%
Bank Muscat	1,548,380,000	26.63%
GULF INV. SER.	58,843,000	30.94%

* The Free Float updated until Q1 2012. Source: Zawya



Sector Name	Bloomberg Code	No of Co.	Current	Previous	Points Daily	DTD %	Points Monthly	MTD %	Points Yearly	YTD %
Financial Sector	BKINV	13	6,202.67	6,170.57	32	0.52	309	5.24	(183)	(2.87)
Industry Sector	INDSI	10	6,654.80	6,663.51	(9)	(0.13)	132	2.02	696	11.68
Services Sector	SINSI	7	2,604.94	2,601.09	4	0.15	25	0.96	38	1.47

Main Indicators - Sectors	Beta	52-Week		Main Indicators	
		High	Low	P/Ex	P/Bx
MSM 30		6,045.39	5,356.82	10.68	1.56
Financial Sector	1.20	7,256.20	5,827.67	11.80	1.34
Industry Sector	0.92	7,003.10	5,558.65	10.20	1.62
Services Sector	0.67	2,750.66	2,334.56	9.20	1.81

Source: MSM, Bloomberg

% Cash Map of Turnover (In & Out) Flows*			
	Offer Turnover %	Bid Turnover %	
MSM30 Index	49%	51%	
Top Four Co.	Turnover(RO000)	Prc. In	Prc. Out
GOVERNMENT BONDS ISSUE 40TH	3,360.0	100%	0%
BANK MUSCAT	813.1	65%	35%
GULF INVESTMENT SER.	318.4	53%	47%
GLOBAL FINANCIAL INVESTMENT	280.0	32%	68%

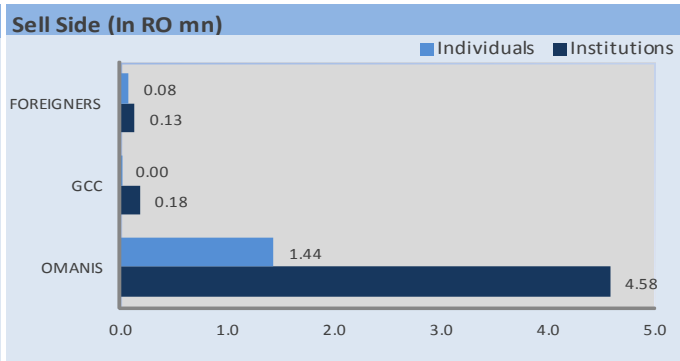
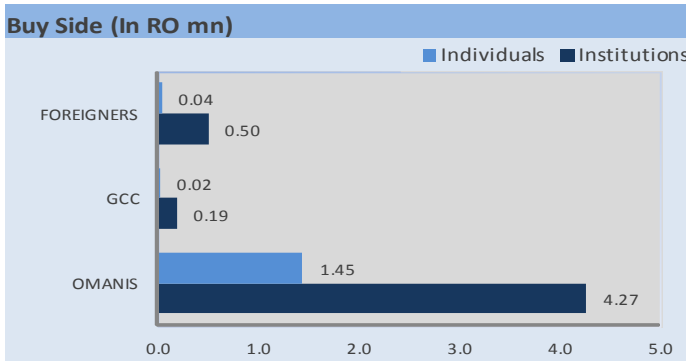
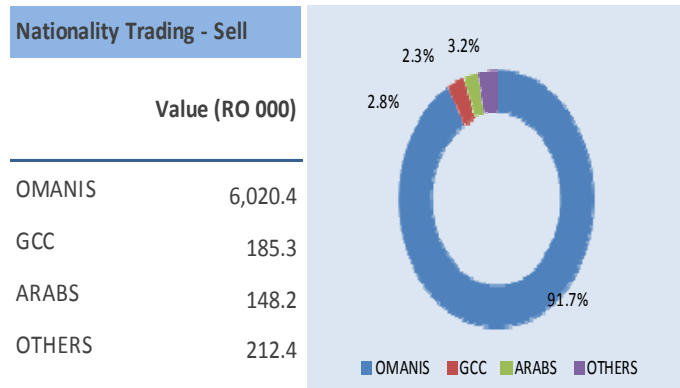
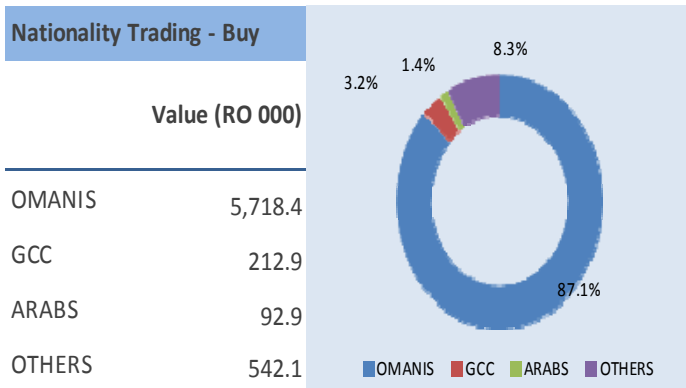
* Cash in as % of total turnover {Bid To / (Bid To + Offer To)}*100

Top Five Daily Deals*					
Company	Quantity No.	Price RO	Trans. Type	Time	Chg. %
BANK SOHAR	650,000	0.139	Buy	10:29:07	0.00
BANK NIZWA	450,000	0.108	Sell	10:48:52	0.00
BANK MUSCAT	250,000	0.532	Sell	11:24:14	0.19
GULF INV. SER.	244,000	0.081	Sell	12:30:48	2.53
NAWRAS	200,000	0.468	Sell	12:08:18	0.00

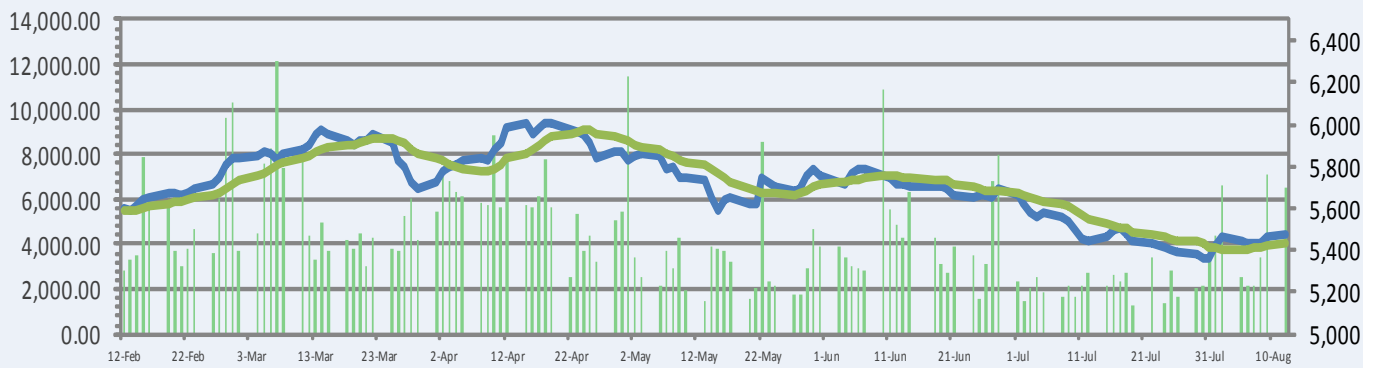
* Excluding Special Deals (Source: Mubasher)

Index Stocks - Up in 3 consecutive sessions			
Company	Day 1	Day 2	Day 3
AHLE BANK	2.05%	3.36%	0.65%
AL HASSAN ENG.	1.59%	7.81%	0.72%
BANK MUSCAT	0.38%	0.38%	2.83%

Index Stocks - Down in 3 consecutive sessions			
Company	Day 1	Day 2	Day 3
DHOFAR INT. DEV.	0.00%	-0.51%	-2.06%



MSM 30 six month close & turnover Vs MA10

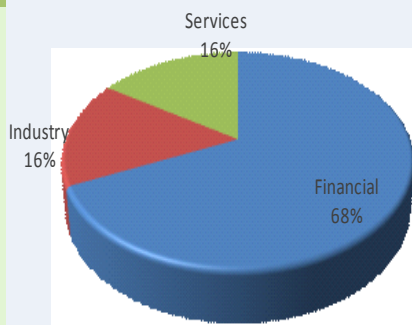


In RO 000

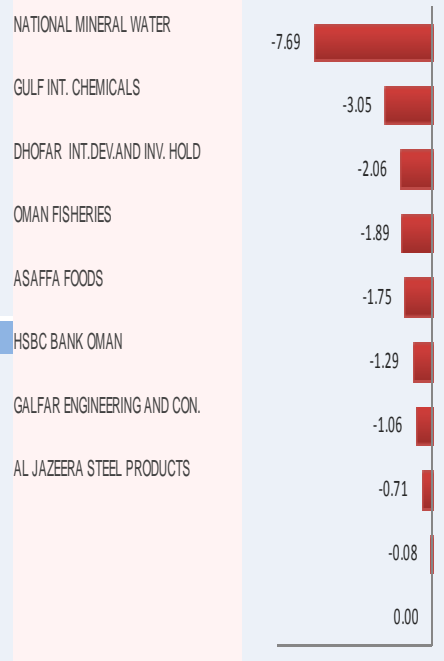
Top 10 Gainers



% Turnover by sectors



Top 10 Losers



MSM 30 -High/Low

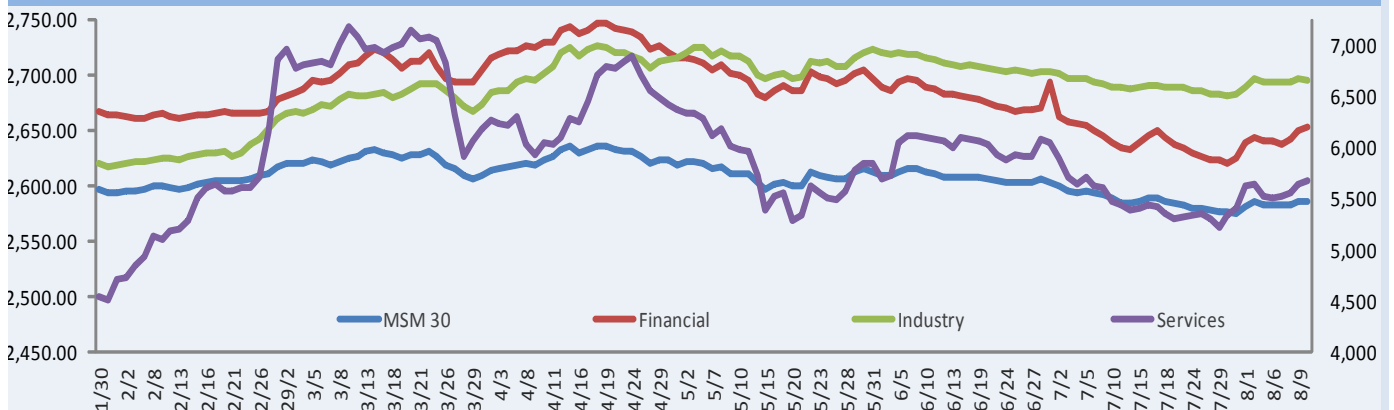


0 1 2 3 4 5 6 7 8 9 10

% Chg.

% Chg

Six month Sectoral Performance



Market performance and value indicators

Financial Sector



Sub Sector	Name of Company	MKT Code	RO	Close	Volume	52-Wk		Share Performance %				BETA	Share Latest Ratio			N/P (RO'mn)	YOY	QOQ
			Capitalization	Price		High	Low	% Δ	% Δ WTD	% Δ MTD	% Δ YTD	1Y	P/E	P/B	Div. Yld. %	Latest Calendar Qtr		
Banking	BANKMUSCATSAOG	BKMB	1,092,641,724	0.536	1,516,065	0.654	0.490	0.94	0.94	3.47	-17.16	1.05	7.70x	1.11x	3.90	34.97	18.89%	4.58%
	BANK DHOFAR SAOG	BKDB	462,048,889	0.420	-	0.501	0.405	0.00	0.00	3.45	-7.71	0.74	12.16x	1.90x	1.39	10.29	-167.86%	12.08%
	NATIONAL BANK OF OMAN SAOG	NBOB	295,842,651	0.267	-	0.319	0.260	0.00	0.00	1.91	-14.48	0.62	7.98x	1.04x	6.39	10.30	10.41%	7.05%
	HSBC BANK OMAN	HBMO	460,071,960	0.230	105,625	0.290	0.224	-1.29	-1.29	1.32	-16.83	0.88	15.36x	1.56x	4.83	4.82	97.34%	98.56%
	BANK SOHAR	BKSB	139,000,000	0.139	1,170,000	0.165	0.136	0.00	0.00	0.00	-12.03	0.97	7.75x	1.06x	5.76	5.03	30.00%	-5.61%
	AHLI BANK	ABOB	184,166,840	0.154	482,451	0.224	0.134	2.00	2.00	7.75	-30.46	0.96	6.91x	1.12x	#N/A/N/A	5.91	26.66%	-0.22%
BANK NIZWA	BKNZ	162,000,000	0.108	1,652,398	0.119	0.099	0.00	0.00	1.89	-	-	-	-	-	1.01	-	-	
Insurance	OMAN UNITED INSURANCE CO	OUIS	15,299,932	0.153	757,023	0.198	0.106	0.00	0.00	1.32	33.04	1.30	13.91	0.77x	4.90	1.74	380.30%	-
	OMAN NATIONAL INVESTMENT CO	ONIC	41,101,311	0.237	237,200	0.324	0.14	0.4237	0.42	8.72	39.41	1.89	11.85x	0.80x	2.12	1.11	9.14%	82.44%
	MUSCAT NATIONAL HOLDING	MNHI	8,825,000	1.765	-	2.200	1.581	0.00	0.00	0.00	-19.00	0.28	4.86x	0.58x	4.25	0.49	-	-32.53%
	DHOFAH INSURANCE	DICS	34,200,001	0.171	-	0.200	0.166	0.00	0.00	0.00	-13.64	0.71	-	1.18x	#N/A/N/A	1.45	9.83%	-269.84%
Finance & Leasing	MUSCAT FINANCE	MFCI	34,475,243	0.171	-	0.185	0.137	0.00	0.00	0.00	2.60	0.48	9.73x	1.28x	#N/A/N/A	0.97	8.67%	0.10%
	NATIONAL FINANCE CO	NFCI	28,061,007	0.112	-	0.139	0.109	0.00	0.00	-1.75	-5.22	0.40	5.92x	0.92x	6.19	0.92	42.90%	-14.07%
	UNITED FINANCE CO	UFCI	34,751,671	0.139	-	0.140	0.093	0.00	0.00	6.92	14.88	0.97	12.20x	1.00x	7.19	0.73	-7.96%	21.48%
	OMAN ORIX LEASING CO.	ORXL	19,626,749	0.119	1,000	0.131	0.087	0.00	0.00	1.74	9.78	0.53	7.76x	0.92x	10.35	0.79	29.32%	4.53%
	AL-OMANIYA FINANCIAL SERVICE	AOFS	59,298,523	0.300	-	0.300	0.234	0.00	0.00	0.00	1.61	0.35	10.37x	1.13x	6.35	1.07	10.17%	-33.92%
	TAAGEER FINANCE	TFCI	26,650,742	0.123	-	0.154	0.1	0.00	0.00	5.13	3.16	0.47	7.84x	0.99x	6.25	0.97	27.33%	0.31%
Investment & Brokerage	FINANCIAL SERVICES CO.	FSCI	4,875,000	0.095	6,000	0.095	0.048	7.14	7.14	15.38	36.36	1.08	-	0.92x	#N/A/N/A	-0.12	-79.51%	-205%
	GLOBAL FIN INVESTMENT	GFIC	28,500,000	0.095	2,950,908	0.114	0.046	2.15	2.15	15.85	69.64	1.67	-	0.82x	#N/A/N/A	0.45	-236.08%	-155.91%
	OMINVEST	OMVS	104,084,206	0.375	125,673	0.454	0.345	0.81	0.81	4.47	-1.58	1.13	10.64x	1.15x	2.43	-	-	-
	NATIONAL SECURITIES	NSCI	1,675,000	0.060	-	0.100	0.063	0.00	0.00	0.00	-12.99	0.51	-	1.10x	#N/A/N/A	-0.07	-42.09%	-299.15%
	GULF INVESTMENTS SERVICES	GISP	49,789,497	0.082	3,899,621	0.106	0.048	3.80	3.80	18.84	57.69	1.87	-	0.77x	#N/A/N/A	-0.75	-5.75%	-1.66%
	FINANCIAL CORP/THE	FINC	8,683,715	0.124	-	0.124	0.119	0.00	0.00	0.00	-0.80	0.34	-	1.20x	#N/A/N/A	0.09	-116.52%	18.33%
	DHOFAH INTL DEVELOPMENT	DIDI	76,200,005	0.381	8,826	0.525	0.379	-2.06	-2.06	-3.54	-12.41	0.96	33.93x	1.00x	5.26	3.17	56.99%	18.97%
	AL BATINAH DEV & INV-50%	DBIH	900,000	0.078	-	0.098	0.031	0.00	0.00	-3.23	-11.76	1.72	-	0.51x	#N/A/N/A	0.04	-125.08%	46.47%
	AL SHUROOQ INV SER	SISC	5,750,000	1.150	-	1.150	1.15	0.00	0.00	0.00	0.00	0.31	-	1.19x	#N/A/N/A	-0.09	73.61%	-37.25%
	AL ANWAR HOLDINGS SAOG	AACT	14,160,000	0.118	116,111	0.164	0.091	0.85	0.85	12.38	9.26	1.47	27.71x	0.78x	#N/A/N/A	0.02	-	-
	OMAN & EMIRATES INV(OM)50%	OEIO	14,015,625	0.115	496,027	0.156	0.087	0.00	0.00	11.65	22.34	1.51	-	0.91x	#N/A/N/A	0.04	-101.45%	95.16%
	TRANS GULF INVESTMENT HLDG CO	TGII	5,216,250	0.075	819,863	0.104	0.054	1.30	1.30	14.71	30.00	1.63	11.77x	0.61x	6.41	-0.16	-49.33%	-121.04%
	AL SHARQIYA INVEST HOLDING	SIHC	7,760,000	-	3,000	0.120	0.08	0.00	0.00	1.04	1.04	0.99	13.47x	0.50x	#N/A/N/A	0.05	-53.98%	-90.66%
AVERAGE			3,419,671,539									11.99x	0.99x	5.25				

Source: Bloomberg. The red marked refers to Q2 results

Market performance and value indicators

Industry Sector



Sub Sector	Name of Company	MKT Code	RO	Close	Volume	52-Wk		Share Performance %				BETA	Share Latest Ratio			N/P (RO'mn)		YOY	QOQ
			Capitalization	Price		High	Low	% Δ	% Δ WTD	% Δ MTD	% Δ YTD	1Y	P/E	P/B	Div. Yld. %	Latest Calendar Qtr			
Food & Beverage Industry	NATIONAL BISCUIT INDUSTRIES	NBII	3,780,000	3.780	-	3.780	3.780	0.00	0.00	0.00	-10.00	0.31	37.63x	1.69x	1.32	0.12	277.20%	-	
	SWEETS OF OMAN	OSCI	5,075,000	0.725	-	0.790	0.604	0.00	0.00	10.18	2.40	0.59	6.87x	2.08x	6.21	0.28	210.71%	76.16%	
	DHOFAR BEVERAGES CO	DBCI	5,220,000	0.261	-	-	-	0.00	0.00	0.00	0.00	0.33	-	2.03x	#N/A/N/A	0.12	-1155.65%	141.35%	
	NATIONAL BEVERAGES CO LTD	NBCI	2,812,500	5.000	-	5.000	5.000	0.00	0.00	0.00	0.00	0.33	-	0.34x	#N/A/N/A	0.00	-66.93%	-82.28%	
	OMAN REFRESHMENT CO	ORCI	89,800,003	1.796	-	1.850	1.025	0.00	0.00	0.00	23.86	0.68	11.09x	5.79x	3.88	1.39	311.91%	-53.67%	
	NATIONAL MINERAL WATER	NMWI	966,096	0.048	40,000	0.070	0.043	-7.69	-7.69	-7.69	6.67	1.21	-	-	#N/A/N/A	-0.20	-11.20%	-24.58%	
	AREEJ VEGETABLE OILS	AVOI	11,504,600	2.501	-	2.501	2.500	0.00	0.00	0.00	0.00	0.33	5.02x	1.21x	10.00	1.17	147.78%	166.36%	
	OMAN FOODS INTERNATIONAL SOA	NRCI	930,000	-	-	0.150	0.045	0.00	0.00	0.00	15.38	0.33	-	0.70x	#N/A/N/A	-0.03	-63%	-48.39%	
	OMAN FLOUR MILLS	OFMI	77,332,497	0.490	500	0.505	0.372	0.00	0.00	7.44	2.72	0.85	26.10x	1.66x	5.10	1.25	-7.07%	123.04%	
	SALALAH MILLS CO	SFMI	42,142,677	0.875	-	1.000	0.740	0.00	0.00	0.00	-10.90	0.40	11.71x	2.25x	4.57	1.15	17.28%	-2.53%	
	OMAN EUROPE FOODS INDUSTRIES	OETI	1,020,000	0.200	-	0.070	0.070	0.00	0.00	0.00	0.00	0.33	-	0.89x	#N/A/N/A	-0.09	-12.38%	-12.38%	
	DHOFAR CATTLEFEED	DCFI	10,780,000	0.140	-	0.160	0.110	0.00	0.00	5.26	3.70	1.49	244.76x	0.27x	3.57	0.39	-62.0%	14.08%	
	OMAN AGRICULTURAL DEV	OADI	1,595,000	-	-	1.451	1.450	0.00	0.00	0.00	0.00	0.33	0.58x	1.29x	#N/A/N/A	3.99	-1181.6%	-892.62%	
	OMAN FISHERIES CO	OFCI	13,000,000	0.104	103,000	0.125	0.089	-1.89	-1.89	4.00	13.04	1.20	13.58x	0.78x	#N/A/N/A	0.00	-99.2%	-99.91%	
	DHOFAR FISH INDUSTRIES CO	DFII	3,248,660	1.279	-	-	-	0.00	0.00	0.00	0.00	0.33	-	2.23x	#N/A/N/A	-0.11	-	-	
SOHAR POULTRY	SPCI	618,000	0.869	-	-	-	0.00	0.00	0.00	0.00	0.33	4.78x	0.53x	#N/A/N/A	-0.04	-	-142.86%		
A'SAFFA FOODS SAOG	SPFI	49,612,499	0.450	51,500	0.540	0.371	-1.75	-1.75	-3.64	-3.37	1.25	12.88x	2.90x	2.55	1.13	10.23%	6.54%		
GULF MUSHROOM COMPANY	GMPI	10,007,711	0.486	-	0.500	0.289	0.00	0.00	0.00	11.84	0.41	10.74x	2.29x	4.68	0.31	22.30%	-17.33%		
Cement	OMAN CEMENT CO	OCOI	203,486,893	0.615	127,700	0.700	0.413	0.00	0.00	-0.81	42.36	0.90	14.05x	1.36x	4.88	3.87	21.84%	-24.71%	
	RAYSUT CEMENT CO	RCCI	269,199,982	1.342	1,200	1.350	0.700	0.00	0.00	5.82	77.11	0.97	13.63x	2.54x	3.72	6.85	75.19%	0.11%	
Engineering & Construction	AL-HASSAN ENGINEERING CO	AFAI	10,378,704	0.138	1,529,608	0.303	0.120	2.22	2.22	-2.13	-45.45	1.40	4.22x	0.63x	10.79	-2.08	-521.46%	-830.53%	
	GALFAR ENGINEERING&CONTRACT	GECS	131,339,996	0.374	17,000	0.440	0.315	-1.06	-1.06	2.47	10.98	1.54	22.12x	2.18x	3.21	1.70	25.33%	-11.31%	
Textiles	OMAN TEXTILE HOLDING CO SAOG	OTHI	2,142,000	0.357	-	0.430	0.340	0.00	0.00	-2.19	-10.97	1.31	-	0.20x	#N/A/N/A	-0.01	-95.97%	-	
	MUSCAT THREAD MILLS CO	MTMI	1,985,734	0.195	-	0.214	0.087	0.00	0.00	0.52	124.25	0.84	7.55x	1.44x	6.69	0.10	106.12%	4.23%	
Mining	GULF STONE	GSCI	2,976,600	0.082	-	0.082	0.082	0.00	0.00	0.00	0.22	0.36	6.97x	0.70x	#N/A/N/A	0.01	-87.90%	-91.71%	
	OMAN CHROMITE	OCCI	10,950,001	3.650	-	3.800	3.400	0.00	0.00	0.00	1.39	0.38	17.65x	2.33x	5.48	0.17	-336.44%	905.9%	
	AL-FAJAR AL-ALAMIA CO	AFAI	35,221,619	0.714	-	0.750	0.643	0.00	0.00	0.00	0.00	0.41	16.63x	1.56x	2.80	-0.11	-118.4%	-21.0%	
Construction Materials Support	CONSTRUCTION MATERIALS IND	CMII	4,760,000	0.056	98,150	0.071	0.037	1.82	1.82	12.00	27.27	1.62	-	0.58x	#N/A/N/A	0.02	-117.9%	-86.7%	
	CEMENT & GYPSUM PRO	O	1,500,000	1.000	-	-	-	0.00	0.00	0.00	0.00	0.33	-	-	#N/A/N/A	0.00	-	-	
	NATL ALUMINIUM PRODUCTS	NAPI	6,882,147	0.205	32,577	0.410	0.180	0.49	0.49	5.13	-49.26	1.40	4.96x	0.94x	9.80	0.03	-90.1%	-89.4%	
	ABRASIVES MANUFACTURING CO S	ABMI	50,000	0.000	-	0.060	0.050	0.00	0.00	0.00	-48.45	0.76	-	-	#N/A/N/A	-0.05	7.2%	6.9%	
	AL-ANWAR CERAMIC TILE CO	AACT	74,616,135	0.365	171,600	0.376	0.253	1.11	1.11	1.96	17.92	0.89	12.37x	2.57x	3.86	1.67	14.3%	4.7%	
	AL JAZEERA STEEL PRODUCTS CO	ATMI	34,971,428	0.280	65,544	0.300	0.233	-0.71	-0.71	0.00	11.11	1.29	9.39x	1.02x	5.36	1.66	51.6%	46.3%	
OMAN CERAMIC COM	OMCI	2,259,880	0.749	-	0.675	0.211	0.00	0.00	0.00	0.00	0.33	12.17x	2.00x	#N/A/N/A	0.04	52.0%	20.1%		
Paper, Glass & Packaging	TAGHLEEF INDUSTRIES SAOG	AKPP	-	-	-	-	-	-	-	-	-	-	-	-	#N/A/N/A	0.00	-	-	
	OMAN PACKAGING	OPCI	6,487,200	0.220	350	0.220	0.150	0.00	0.00	0.00	25.00	0.67	5.30x	1.27x	6.82	0.44	770.1%	-	
	FLEXIBLE IND PACKAGES	FIPC	2,651,250	0.125	-	0.125	0.113	0.00	0.00	0.00	-7.41	0.40	9.62x	1.02x	#N/A/N/A	0.04	-5.1%	-54.9%	
	GULF PLASTIC INDUSTRIES CO	AKPI	389,000	0.000	-	0.389	0.389	0.00	0.00	0.00	0.00	0.33	1.99x	0.30x	#N/A/N/A	0.11	-	-	
	PACKAGING CO LTD	PCLI	1,110,000	0.370	-	0.370	0.370	0.00	0.00	0.00	0.00	0.33	6.76x	0.43x	#N/A/N/A	-0.15	1175.6%	-104.5%	
	COMPUTER STATIONERY INDS	CSII	3,250,000	0.325	-	-	-	0.00	0.00	0.00	0.00	0.33	-	1.79x	#N/A/N/A	0.01	-77.1%	-109.9%	
Chemicals	AL AHLIA CONVERTING INDUS	AACI	330,000	0.033	-	0.055	0.020	0.00	0.00	0.00	-67.00	0.85	-	-	#N/A/N/A	-	-	-	
	MAJAN GLASS COMPANY	MGCI	19,025,093	0.498	-	0.583	0.460	0.00	0.00	0.00	-11.21	0.30	20.63x	1.53x	4.39	0.34	-31.4%	-269.4%	
	GULF INTERNATIONAL CHEMICALS	GICI	3,339,000	0.159	125,000	0.212	0.112	-3.05	-3.05	5.30	10.42	1.57	10.11x	1.21x	9.43	0.09	7.8%	-8.6%	
Pharmaceuticals	OMAN CHLORINE	OCHL	29,650,574	0.480	-	0.500	0.340	0.00	0.00	-3.03	9.09	0.82	10.16x	1.85x	5.21	0.80	11.6%	8.9%	
	NATIONAL DETERGENTS/THE	NDTI	15,291,990	0.899	-	0.897	0.849	0.00	0.00	0.00	0.00	0.33	20.30x	1.23x	4.45	0.20	-7.7%	-29.6%	
	NATIONAL PHARMACEUTICAL	NPMI	5,000,000	0.100	-	0.100	0.100	0.00	0.00	0.00	0.00	0.33	4.82x	0.93x	#N/A/N/A	0.14	2.9%	-9.7%	
Electrical & Mechanical	OMAN FIBER OPTICS	OFOI	13,098,341	2.761	-	3.027	2.761	0.00	0.00	0.00	0.01	0.33	5.40x	1.27x	7.69	0.50	19.8%	7.6%	
	VOLTAMP ENERGY SAOG	VOES	14,580,500	0.241	313,601	0.473	0.223	0.42	0.42	6.64	-35.97	1.08	10.73x	0.97x	7.54	0.13	-73.1%	-44.3%	
	OMAN CABLES INDUSTRY	OCAI	73,912,804	0.824	22,152	0.915	0.660	0.49	0.49	0.98	11.35	1.16	8.48x	1.47x	4.84	3.23	57.8%	89.3%	
	OMAN FILTERS INDUSTRY	OFIG	400,000	0.000	-	0.039	0.020	0.00	0.00	0.00	0.00	0.29	-	2.29x	#N/A/N/A	-0.08	54.1%	-47.6%	
AVERAGE			1,310,682,113									17.83x	1.48x	5.51					

Source: Bloomberg. The red marked refers to Q2 results

Market performance and value indicators

Services Sector



Sub Sector	Name of Company	MKT Code	RO Capitalization	Close Price	Volume	52-Wk		Share Performance %				BETA	Share Latest Ratio			N/P (RO'mn)	YOY	QOQ
						High	Low	% Δ	% Δ WTD	% Δ MTD	% Δ YTD	1Y	P/E	P/B	Div. Yld. %	Latest Calendar Qtr		
Telecommunication	OMAN TELECOMMUNICATIONS CO	OTEL	993,000,000	1.324	126,624	1.434	1.050	-0.08	-0.08	-0.45	1.15	0.87	8.36x	2.22x	10.57	32.14	10.86%	7.64%
	OMANI QATARI TELECOMMUNICATI	NWRS	304,641,876	0.468	248,500	0.674	0.461	0.00	0.00	-0.43	-28.00	1.01	6.74x	1.99x	8.12	9.80	-18.97%	-17.77%
Tourism & Hospitality	GULF HOTELS (OMAN) CO LTD	GHOS	37,708,000	11.000	-	10.999	9.900	0.00	0.00	0.00	0.00	0.33	13.84x	1.34x	7.27	0.57	22.15%	-35.89%
	INTERIOR HOTELS	INHNS	6,451,354	0.129	-	0.129	0.129	0.00	0.00	0.00	0.32	0.34	7.28x	0.96x	#N/A/N/A	-0.06	-190.85%	-127.24%
	AL BATINAH HOTELS	BAHS	2,998,380	1.298	-	1.298	1.298	0.00	0.00	0.00	-0.01	-14.30	63.95x	1.14x	#N/A/N/A	0.08	-	-
	AL BURAIMI HOTEL	ABHS	3,144,090	0.880	-	-	-	0.00	0.00	0.00	0.00	0.33	-	1.07x	#N/A/N/A	-0.01	-	-0.94%
	OMAN HOTELS & TOURISM CO	OHTS	12,127,500	2.205	-	3.100	2.205	0.00	0.00	-10.00	-28.87	0.31	7.93x	0.46x	4.54	0.64	109.29%	-
	HOTELS MANAGEMENT CO INTERNA	HMCI	8,324,578	0.100	-	0.110	0.072	0.00	0.00	0.00	26.58	0.44	-	0.72x	#N/A/N/A	0.07	-45.74%	-
	SAHARA HOSPITALITY	SAHS	14,291,666	2.450	-	2.450	2.450	0.00	0.00	0.00	4.26	0.35	8.25x	1.20x	#N/A/N/A	0.52	21.36%	21.93%
	DHOFAR TOURISM	DTCS	8,000,000	1.000	-	1.100	1.000	0.00	0.00	0.00	0.00	0.35	-	0.28x	#N/A/N/A	-0.59	-8.69%	11.59%
	SALALAH BEACH RESORT SAOG	SHCS	8,937,500	1.430	-	-	-	0.00	0.00	0.00	0.00	0.33	13.95x	1.05x	#N/A/N/A	0.05	-	-
Logistics	PORT SERVICE CORPORATION	PSCS	37,540,802	0.395	800	0.565	0.368	0.00	0.00	5.33	-7.71	1.04	8.27x	1.19x	12.50	1.68	30.01%	24.98%
	SALALAH PORT SERVICES	SPSI	84,524,803	0.470	-	0.479	0.423	0.00	0.00	0.00	-1.88	0.30	28.30x	2.19x	3.19	1.61	63.71%	7.71%
Oil & Gas Marketing	SHELL OMAN MARKETING	SOMS	255,000,000	2.550	-	2.600	2.235	0.00	0.00	-0.78	6.56	0.55	22.16x	10.18x	4.59	3.46	-11.31%	2.61%
	OMAN OIL MARKETING COMPANY	OOMS	118,680,000	1.840	-	1.865	1.450	0.00	0.00	0.00	7.60	0.46	14.64x	3.71x	3.37	1.88	0.46%	1.48%
	AL MAHA PETROLEUM PRODUCTS M	MHAS	113,849,998	16.500	-	17.001	10.670	0.00	0.00	0.00	22.22	0.71	11.79x	3.16x	5.15	2.95	27.98%	18.08%
	NATIONAL GAS CO	NGCI	13,675,000	0.547	-	0.600	0.488	0.00	0.00	0.00	3.60	0.37	11.19x	1.69x	7.31	0.25	-	-22.38%
MUSCAT GASES COMPANY SAOG	MGMC	24,600,000	0.820	200	0.820	0.720	0.00	0.00	0.00	10.66	0.45	18.19x	3.57x	7.32	0.34	-5.77%	-28.23%	
Education & Training	DHOFAR UNIVERSITY	DHUS	15,820,000	1.130	-	1.130	1.124	0.00	0.00	0.00	-5.75	0.29	35.46x	1.34x	#N/A/N/A	0.53	-	-3732.88%
	MAJAN COLLEGE	BACS	8,849,999	0.295	2,000	0.310	0.255	0.00	0.00	3.87	10.90	0.43	8.69x	1.53x	10.17	0.25	55.17%	-21.35%
	NATIONAL HOSPITALITY INSTITU	NHIS	2,050,000	2.050	-	-	-	0.00	0.00	0.00	0.00	0.33	67.78x	3.82x	#N/A/N/A	0.00	-	-
	OMAN EDUCATION & TRAINING IN	OETI	24,639,999	0.352	-	0.352	0.265	0.00	0.00	0.00	0.00	0.21	239.95x	2.07x	0.85	-0.04	-	-
Energy	AL KAMIL POWER CO	KPCS	17,873,625	1.857	-	1.860	1.620	0.00	0.00	2.03	7.97	0.35	7.19x	1.07x	6.46	0.81	10.52%	55.28%
	DHOFAR POWER CO	DHPS	-	-	-	-	-	-	-	-	-	-	-	-	#N/A/N/A	-	-	-
	SOHAR POWER CO	SHPS	38,169,399	1.373	200	1.750	1.301	0.00	0.00	-1.15	-18.52	0.90	15.15x	13.99x	5.83	1.86	-5.62%	-228.91%
	UNITED POWER CO	UECS	12,350,756	1.030	-	1.444	0.905	0.00	0.00	0.00	2.79	0.18	13.23x	0.69x	13.59	0.19	-68.48%	-14.75%
	ACWA POWER BARKA SAOG	APBS	60,799,999	0.380	-	0.400	0.260	0.00	0.00	0.00	27.86	0.47	7.56x	1.75x	6.58	2.54	-3.73%	154.06%
	OMAN NATIONAL ENGINEERING AN	ONES	28,000,801	0.400	-	0.437	0.344	0.00	0.00	1.27	1.45	0.50	9.41x	1.43x	3.00	0.70	-15.89%	-21.33%
SMN POWER HOLDING SAOG	SMNP	79,494,896	3.982	-	4.000	3.410	0.00	0.00	0.86	8.71	-	-	42.53x	8.46	2.87	-	-	
Diversified Commercial Services	RENAISSANCE SERVICES SAOG	RNSS	127,224,602	0.451	376,729	0.730	0.427	1.81	1.81	2.73	-17.25	2.02	-	0.76x	#N/A/N/A	0.78	-16.36%	-117.76%
	AL JAZEIRA SERVICES	AJSS	45,082,611	0.283	2,100	0.320	0.139	0.00	0.00	5.60	59.89	1.29	7.58x	1.56x	2.49	1.08	-205.71%	-
	OMAN INTL MARKETING	OIMS	259,000	0.000	-	0.518	0.518	0.00	0.00	0.00	-5.82	0.33	-	1.41x	#N/A/N/A	-	-	-
	OMAN HOLDING INTERNATIONAL	OHII	23,650,745	0.215	-	0.269	0.180	0.00	0.00	0.00	-14.34	1.08	3.88x	0.44x	9.30	0.19	-79.01%	-95.63%
OMAN INVESTMENT & FINANCE	OIFC	23,659,986	0.169	7,665	0.199	0.127	0.00	0.00	4.97	6.58	1.24	6.99x	1.31x	5.07	0.56	-15.42%	-59.75%	
Health Care	OMAN MEDICAL PROJECTS	OMPS	8,324,578	0.100	-	0.110	0.072	0.00	0.00	0.00	26.58	0.44	-	0.72x	#N/A/N/A	0.07	-45.74%	-
AVERAGE			2,563,746,547										24.73x	3.37x	6.62			

Source: Bloomberg. The red marked refers to Q2 results



OAB - IMG Winner of the
'Best Brokerage Award'
from MSM for
6 Consecutive Years



Research Division

Email: Research@oabinvest.com

Private Banking Division

Email: clubelite@oabinvest.com

Product Development Division

Email: b.alrousan@oabinvest.com

Asset Management Division

Email: assetmanagement@oabinvest.com

Brokerage Division

Email: brokerage@oabinvest.com

Corp. Finance & Advisory Division

Email: corporatefinance@oabinvest.com

Wealth Management-NRI

Email: d.gadhvi@oabinvest.com

Custody Division

Email: custody@oabinvest.com

Customer Services Division

Email: customerservice@oabinvest.com

PO Box 2010, Ruwi, 112, Muscat-Oman. Tel: +96824827399 Fax: +96824827367

Web site <http://www.oabinvest.com>

e-mail: research@oabinvest.com



39th International Trophy for Quality
Awarded to Oman Arab Bank SAOC
By Trade Leaders' Club

Disclaimer:

This report has been prepared by research department in IMG – Oman Arab Bank, and is provided for information purposes only. Under no circumstances is to be used or considered as an offer to sell or solicitation of any offer to buy. While all reasonable care has been taken to ensure that the information contained therein is not untrue or misleading at the time of publication, we make no representation as to its accuracy or completeness and it should not be relied upon as such, and the bank accepts no responsibility whatsoever for any direct or indirect consequential loss arising from any use of this report or its contents. All opinions and estimates included in this document constitute IMG's Research department judgment as of the date of production of this report, and are subject to change without notice. This report may not be reproduced, distributed or published by any recipient for any purpose.