

AI Arabi Daily MSM Report

No. of Issue:609

Date:12/06/2012

Daily Summary	Current	Previous	Change	D/D	MTD	YTD
				%	%	%
ALARABI OMAN20 INDEX	1,018.87	1,026.55	(7.68)	(0.75)	(1.14)	0.50
AI Arabi GCC 50 Index	950.17	953.71	(3.54)	(0.37)	(1.21)	1.18
MSM 30	5,714.11	5,743.69	(29.58)	(0.51)	(0.71)	0.33
Volume(In 000)	28,014	41,971	(13,956.66)	(33.25)		
Value traded (In RO 000)	4,891	5,505	(614.49)	(11.16)		

View of the MSM:

The MSM 30 index closed at 5,714.11 points, -0.51% down from the last trading session. 1 out of 42 stocks trading managed a green closing and 27 in the red zone. While 14 no changed 28.0 mn. shares traded during the day with the value reaching RO 4.9 mn. Financial sector closed at 6,519 points, Industry sector closed 6,824.7 points and the services sector closed at 2,640.22 points with percentage change of -0.70%, -0.42%, -0.09% respectively.

Top Gainers	Price	Chg	Chg
Companies	RO	RO	%
AI MAHA PETROLEUM PRODUCTS	17.000	0.441	2.66
AL JAZEERA SERVICES	0.271	0.000	0.00
DHOFAR INSURANCE	0.171	0.000	0.00
GLOBAL FINANCIAL INVESTMENT	0.085	0.000	0.00
GULF INVESTMENT SER	0.085	0.000	0.00

Top Co. - Value	Price	Value	Mkt.Share
Companies	RO	in RO 000	
BANK NIZWA	0.110	2,562.36	52.39%
AI MAHA PETROLEUM PRODUCT	17.000	1,030.80	21.08%
NAWRAS	0.511	185.51	3.79%
OMAN CEMENT	0.674	112.24	2.29%
OMAN CABLES INDUSTRY	0.815	105.14	2.15%

Market Capitalization	
(In Billion)	
OMR	USD
7.13	18.39

Top Losers	Price	Chg	Chg
Companies	RO	RO	%
OMAN HOTELS AND TOURISM	2.450	(0.240)	(8.92)
OMAN UNITED INSURANCE	0.155	(0.005)	(3.13)
AL BATINAH DEV. INV. HOLDING	0.035	(0.001)	(2.78)
ONIC. HOLDING	0.258	(0.007)	(2.64)
ACWA POWER BARKA	0.370	(0.009)	(2.38)

Top Co. - Volume	Price	Volume	Mkt.Share
Companies	RO	in 000	
BANK NIZWA	0.110	23,333.37	83.29%
BANK SOHAR	0.151	408.92	1.46%
OMAN FISHERIES	0.112	397.13	1.42%
OMAN INVESTMENT AND FINAN	0.218	374.54	1.34%
NAWRAS	0.511	363.05	1.30%

No. of Companies		
Increased	Decreased	Unchanged
↑ 1	↓ 27	≡ 14

Key Announcements

Event Date	Company	Event	Details

MSM 30 Companies with highest Free Float % *

Company	No. of Shares	Traded
TRANSGULF IND. INV. HOLDING	66,875,000	92.40%
HSBC BANK OMAN	1,020,159,523	84.33%
GULF INT. CHEMICALS	21,000,000	81.72%
RENAISSANCE SERVICES	282,094,000	79.44%
DHOFAR INT. DEV.	200,000,000	71.42%

MSM 30 Companies with lowest Free Float % *

Company	No. of Shares	Traded
NBO	1,081,000,000	16.24%
OMANTEL	750,000,000	22.90%
A SAFFA FOODS	105,000,000	23.50%
Bank Muscat	1,548,380,000	26.63%
GULF INV. SER.	58,843,000	30.94%

* The Free Float updated until Q1 2012. Source: Zawya



Sector Name	Bloomberg Code	No of Co.	Current	Previous	Points Daily	DTD %	Points Monthly	MTD %	Points Yearly	YTD %
Financial Sector	BKINV	13	6,518.62	6,564.53	(46)	(0.70)	(153)	(2.30)	133	2.08
Industry Sector	INDSI	11	6,824.70	6,853.36	(29)	(0.42)	(127)	(1.83)	866	14.53
Services Sector	SINSI	6	2,640.22	2,642.53	(2)	(0.09)	21	0.79	73	2.84

Main Indicators - Sectors	Beta	52-Week		Main Indicators	
		High	Low	P/Ex	P/Bx
MSM 30		6,045.39	5,408.27	12.44	1.55
Financial Sector	1.20	7,256.20	5,827.67	11.80	1.35
Industry Sector	0.94	7,003.10	5,558.65	10.20	1.65
Services Sector	0.70	2,750.66	2,334.56	9.20	1.83

Source: MSM, Bloomberg

% Cash Map of Turnover (In & Out) Flows*			
	Offer Turnover %	Bid Turnover %	
MSM30 Index	52%	48%	
Top Four Co.	Turnover(RO000)	Prc. In	Prc. Out
BANK NIZWA	2,562.4	29%	71%
AI MAHA PETROLEUM PRODUCTS MAR	1,030.8	42%	58%
NAWRAS	185.5	34%	66%
OMAN CEMENT	112.2	90%	10%

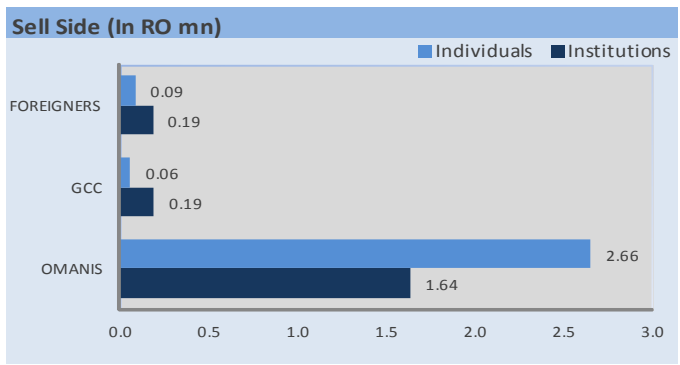
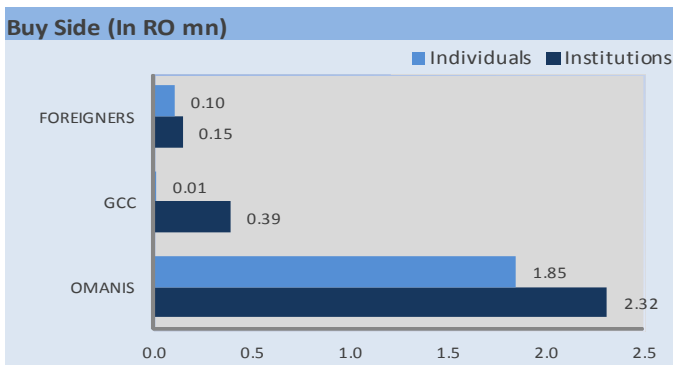
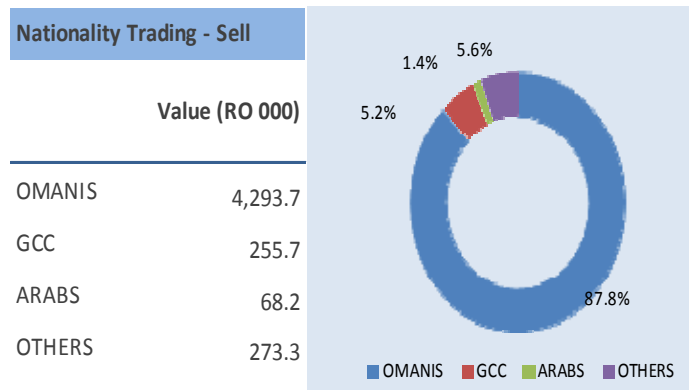
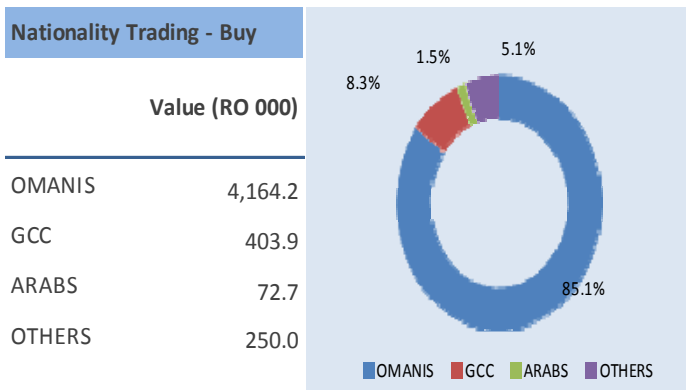
* Cash in as %of total turnover (Bid To / (Bid To + Offer To))*100

Top Five Daily Deals*					
Company	Quantity No.	Price RO	Trans. Type	Time	Chg. %
BANK NIZWA	979,915	0.109	Sell	12:53:53	-1.80
NAWRAS	199,000	0.511	Sell	12:06:29	-0.20
OMAN INV. & FIN.	194,088	0.218	Sell	11:12:33	-0.46
GULF INT. CHEMICALS	193,000	0.157	Sell	12:39:46	-1.88
NBO	100,000	0.288	Buy	12:50:44	-0.69

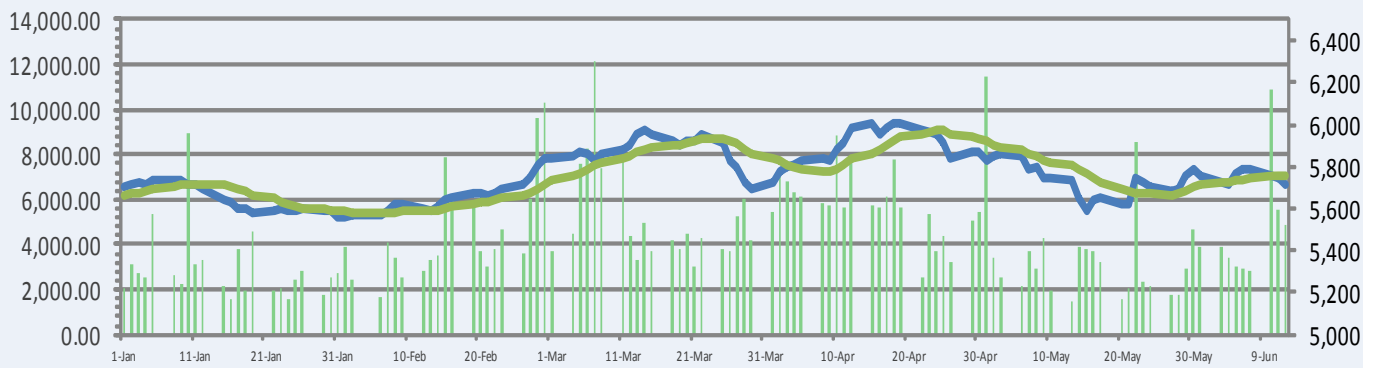
* Excluding Special Deals (Source: Mubasher)

Index Stocks - Up in 3 consecutive sessions			
Company	Day 1	Day 2	Day 3

Index Stocks - Down in 3 consecutive sessions			
Company	Day 1	Day 2	Day 3
OMAN FISHERIES	-23.30%	0.00%	-78.65%

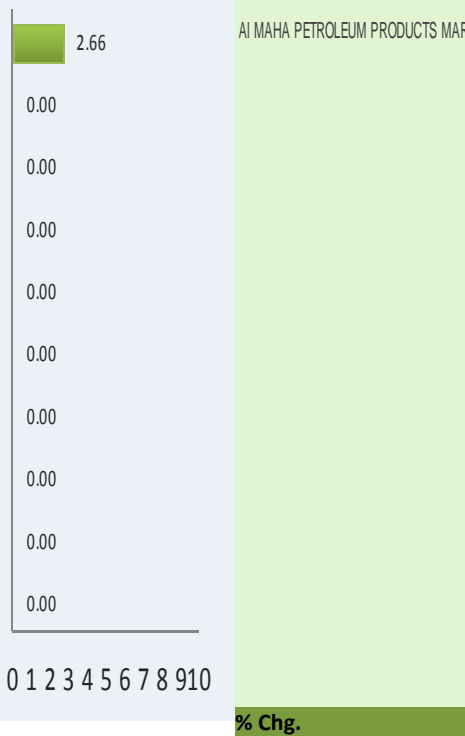


MSM 30 six month close & turnover Vs MA10

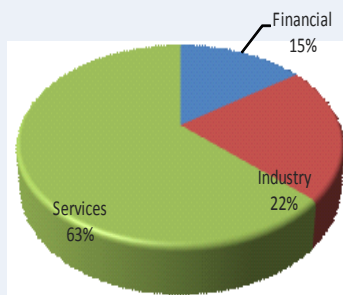


In RO 000

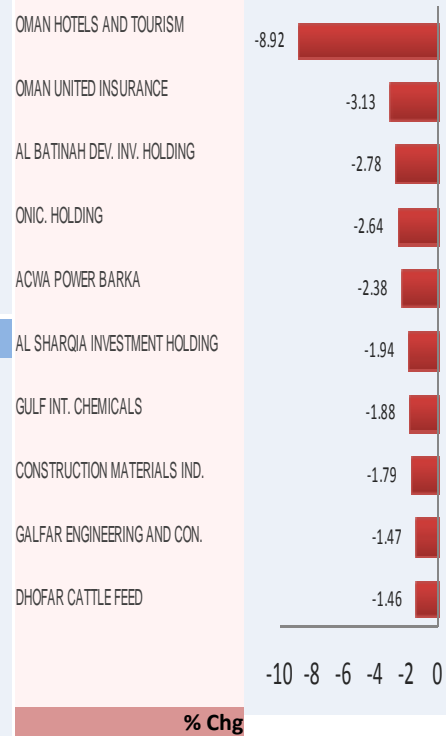
Top 10 Gainers



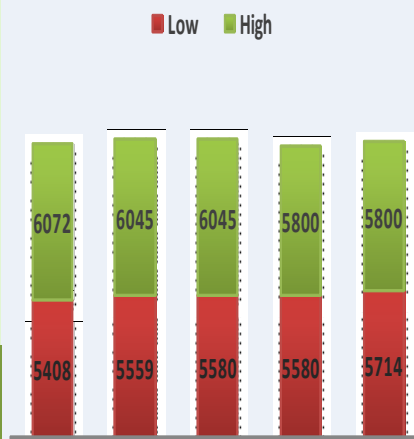
% Turnover by sectors



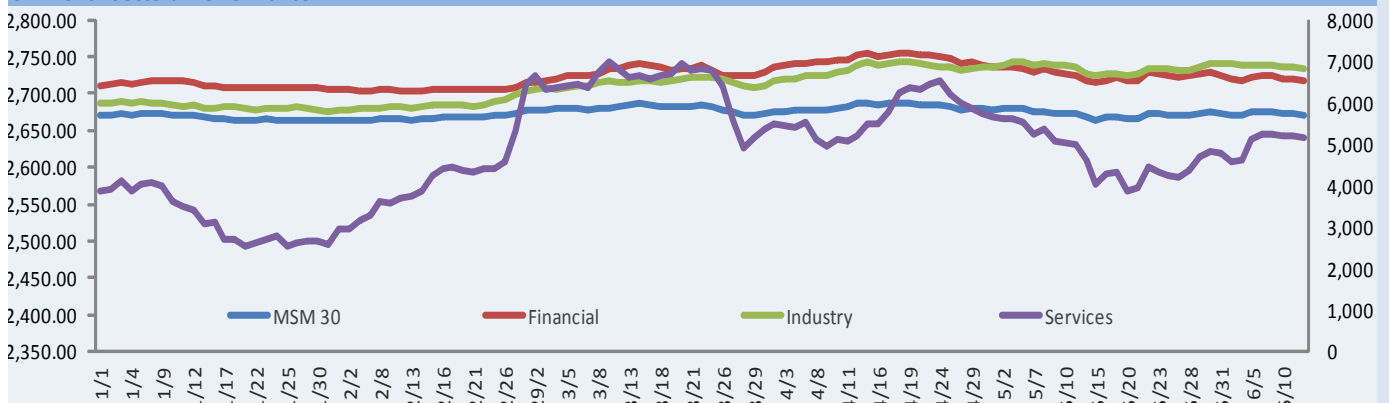
Top 10 Losers



MSM 30 -High/Low



Six month Sectoral Performance



Market performance and value indicators

Financial Sector



Sub Sector	Name of Company	MKT Code	RO	Close	Volume	52-Wk		Share Performance %				BETA	Share Latest Ratio			N/P (RO'mn)	YOY	QOQ
			Capitalization	Price		High	Low	% Δ	% Δ WTD	% Δ MTD	% Δ YTD	1Y	P/E	P/B	Div. Yld. %	Latest Calendar Qtr		
Banking	BANKMUSCAT SAOG	BKMB	1,007,477,295	0.556	107,703	0.673	0.535	-1.24	-1.77	-1.94	-16.53	1.04	8.08x	1.16x	3.91	33.44	20.00%	9.96%
	BANK DHOFAR SAOG	BKDB	473,050,079	0.430	-	0.880	0.527	0.00	-1.60	-2.05	-5.51	0.84	35.64x	2.06x	1.35	9.40	0.19%	14.13%
	NATIONAL BANK OF OMAN SAOG	NBOB	319,111,176	0.288	125,772	0.363	0.252	-0.69	-0.35	0.35	-7.75	0.61	8.84x	1.17x	5.93	9.62	24.33%	38.54%
	HSBC BANK OMAN	HBMO	492,076,965	0.246	332,400	0.340	0.250	0.00	-1.20	4.24	-11.04	0.84	16.66x	1.48x	4.54	2.43	-45.31%	-44.01%
	BANK SOHAR	BKSB	151,000,000	0.151	408,920	0.249	0.175	-0.66	-1.31	-3.21	-4.43	1.02	9.00x	1.19x	5.30	5.33	74.30%	49.51%
	AHLI BANK	ABOB	188,833,572	0.199	10,000	0.288	0.175	-1.00	-1.00	-0.50	-11.09	0.92	9.39x	1.50x	-	5.92	46.89%	22.26%
	BANK NIZWA	BKNZ	165,000,000	0.110	23,333,367	0.119	0.108	0.00	0.00	0.00	0.00	-	-	-	-	0.00	-	-
Insurance	OMAN UNITED INSURANCE CO	OUIS	15,499,932	0.155	43,400	0.198	0.104	-3.13	-3.12	-4.32	34.78	1.28	14.09	0.78x	4.84	1.74	380.30%	-
	OMAN NATIONAL INVESTMENT CO	ONIC	44,743,195	0.259	123,545	0.599	0.314	-2.6415	-3.01	-4.80	51.76	1.82	-	0.89x	1.94	1.02	-50.64%	-334.98%
	MUSCAT NATIONAL HOLDING	MNHI	8,825,000	1.765	-	2.500	1.987	0.00	0.00	0.00	-19.00	0.27	4.86x	0.58x	4.25	0.49	-	-32.53%
	DHOFAIR INSURANCE	DICS	34,200,001	0.171	49,831	0.200	0.166	0.00	0.00	0.00	-13.64	0.76	-	1.18x	-	1.45	9.83%	-269.84%
Finance & Leasing	MUSCAT FINANCE	MFCI	34,273,632	0.170	-	0.292	0.215	0.00	0.00	0.00	2.00	0.40	9.89x	1.59x	-	0.96	5.93%	10.42%
	NATIONAL FINANCE CO	NFCI	28,562,096	0.114	-	0.153	0.117	0.00	0.00	0.88	-3.53	0.40	6.02x	0.93x	6.14	0.92	42.90%	-14.07%
	UNITED FINANCE CO	UFCI	32,501,560	0.130	-	0.150	0.095	0.00	0.00	0.00	7.44	0.89	11.41x	0.93x	7.69	1.05	142.45%	74.57%
	OMAN ORIX LEASING CO.	ORXL	18,452,499	0.110	166,406	0.190	0.164	0.00	0.00	0.00	3.21	0.51	7.29x	0.86x	11.01	0.75	32.69%	-0.13%
	AL-OMANIYA FINANCIAL SERVICE	AOFS	57,321,899	0.290	-	0.285	0.2	0.00	0.00	0.00	-1.77	0.33	10.02x	1.09x	6.57	1.07	10.17%	-33.92%
	TAAGEER FINANCE	TFCI	26,434,069	0.122	-	0.294	0.196	0.00	-1.61	-3.94	2.32	0.45	7.77x	0.98x	63.05	1.04	20.60%	36.03%
Investment & Brokerage	FINANCIAL SERVICES CO.	FSCI	5,200,000	0.101	-	0.220	0.098	0.00	0.00	3.90	45.45	1.04	-	0.96x	-	0.11	-117.99%	-125%
	GLOBAL FIN INVESTMENT	GFIC	25,500,000	0.085	253,647	0.165	0.073	0.00	-4.49	-4.49	51.79	1.55	-	0.73x	-	0.45	-236.08%	-155.91%
	OMINVEST	OMVS	106,867,203	0.384	69,969	0.478	0.357	-0.26	-7.02	-9.43	1.05	1.18	-	1.18x	2.37	1.92	-30.34%	-7.64%
	NATIONAL SECURITIES	NSCI	1,675,000	0.035	-	0.140	0.092	0.00	0.00	-2.90	-12.99	0.52	-	1.10x	-	0.04	-70.00%	-127.70%
	GULF INVESTMENTS SERVICES	GISP	50,240,200	0.085	125,500	0.184	0.087	0.00	-2.30	-2.30	63.46	1.69	9.88x	0.77x	-	1.13	13.69%	5.82%
	FINANCIAL CORP/THE	FINC	8,683,715	0.124	-	2.321	1.214	0.00	0.00	0.00	-0.80	0.35	-	1.20x	-	0.09	-116.52%	18.33%
	DHOFAIR INTL DEVELOPMENT	DIDI	84,000,000	0.420	-	0.475	0.355	0.00	-0.47	-2.33	-3.45	1.06	37.41x	1.11x	4.76	3.17	56.99%	18.97%
	AL BATINAH DEV & INV-50%	DBIH	1,050,000	0.085	84,270	0.158	0.063	-2.78	0.00	2.94	2.94	1.19	-	0.60x	-	0.03	-114.13%	-108.39%
	AL SHUROOQI INV SER	SISC	5,750,000	1.150	-	2.299	1.1	0.00	0.00	0.00	0.00	-0.14	-	1.19x	-	-0.09	73.61%	-37.25%
	AL ANWAR HOLDINGS SAOG	AACT	14,640,000	0.122	-	0.298	0.15	0.00	0.00	5.17	12.96	1.41	28.65x	0.81x	-	0.02	-	-
	OMAN & EMIRATES INV(OM)50%	OEIO	16,331,251	0.133	2,000	0.331	0.178	0.00	0.00	-0.74	42.55	1.41	-	1.06x	-	0.04	-101.45%	95.16%
	TRANSULF INVESTMENT HLDG CO	TGII	5,684,375	0.080	30,500	0.161	0.084	-1.16	-1.16	-4.49	41.67	1.47	12.83x	0.66x	5.88	0.76	20.31%	236.14%
	AL SHARQIYA INVEST HOLDING	SIHC	8,080,000	-	25,000	0.162	0.101	-1.94	-1.94	-2.88	5.21	0.95	13.46x	0.52x	-	0.51	81.28%	-645.75%
AVERAGE			3,431,064,715									13.75x	1.04x	8.72				

Source: Bloomberg. The red marked refers to Q1 results

Market performance and value indicators

Industry Sector



Sub Sector	Name of Company	MKT Code	RO Capitalization	Close Price	Volume	52-Wk		Share Performance %				BETA 1Y	Share Latest Ratio			N/P (RO'mn) Latest Calendar Qtr	YOY	QOQ
						High	Low	% Δ	% Δ WTD	% Δ MTD	% Δ YTD		P/E	P/B	Div. Yld. %			
Food & Beverage Industry	NATIONAL BISCUIT INDUSTRIES	NBII	3,780,000	3.780	-	3.780	3.780	0.00	0.00	0.00	-10.00	0.31	37.63x	1.69x	1.32	0.12	277.20%	-
	SWEETS OF OMAN	OSCI	4,354,000	0.622	-	0.795	0.604	0.00	0.00	-1.27	-12.15	0.59	5.89x	1.79x	7.23	0.16	-8.74%	0.88%
	DHOFAR BEVERAGES CO	DBCI	5,220,000	0.261	-	-	-	0.00	0.00	0.00	0.00	0.33	-	2.03x	-	0.05	-245.80%	264.49%
	NATIONAL BEVERAGES CO LTD	NBCI	2,812,500	5.000	-	5.000	5.000	0.00	0.00	0.00	0.00	0.33	-	0.34x	-	0.00	-66.93%	-82.28%
	OMAN REFRESHMENT CO	ORCI	82,500,000	1.650	-	1.750	1.000	0.00	0.00	-4.24	13.79	0.64	10.19x	5.32x	4.24	1.39	311.91%	-53.67%
	NATIONAL MINERAL WATER	NMWI	1,046,604	0.052	-	0.070	0.043	0.00	0.00	0.00	15.56	1.26	-	7.57x	-	-0.26	-8.59%	-28.48%
	AREEJ VEGETABLE OILS	AVOI	11,504,600	2.501	-	2.501	2.500	0.00	0.00	0.00	0.00	0.33	7.22x	1.38x	10.00	0.44	21.88%	1036.95%
	OMAN FOODS INTERNATIONAL SOA	NRCI	874,200	-	-	0.146	0.045	0.00	0.00	0.00	8.46	0.34	-	0.66x	-	-0.06	13%	-47.86%
	OMAN FLOUR MILLS	OFMI	73,394,997	0.466	-	0.559	0.372	0.00	-0.21	0.22	-2.51	0.79	24.77x	1.57x	5.36	1.25	-7.07%	123.04%
	SALALAH MILLS CO	SFMI	41,901,863	0.870	-	1.000	0.740	0.00	0.00	-3.33	-11.41	0.42	12.35x	2.24x	4.60	1.18	7.94%	158.73%
	OMAN EUROPE FOODS INDUSTRIES	OETI	1,020,000	0.200	-	0.070	0.070	0.00	0.00	0.00	0.00	0.33	-	0.89x	-	-0.09	-12.38%	-12.38%
	DHOFAR CATTLEFEED	DCFI	10,395,000	0.135	87,000	0.160	0.110	-1.46	-3.57	-4.93	0.00	1.42	14.73x	0.26x	3.70	0.34	-227.2%	-437.62%
	OMAN AGRICULTURAL DEV	OADI	1,595,000	-	-	1.451	1.450	0.00	0.00	0.00	0.00	0.33	-	-	-	-0.50	93.5%	0.60%
	OMAN FISHERIES CO	OFCI	14,000,000	0.112	397,132	0.125	0.086	0.00	-0.88	0.00	21.74	1.12	14.06x	0.84x	-	0.33	-251.9%	-1.39%
	DHOFAR FISH INDUSTRIES CO	DFII	3,248,660	1.279	-	-	-	0.00	0.00	0.00	0.00	0.33	-	2.23x	-	-0.11	-	-
	SOHAR POULTRY	SPCI	618,000	0.790	-	-	-	0.00	0.00	0.00	0.00	0.10	4.78x	0.53x	-	-0.04	-	-142.86%
A'SAFFA FOODS SAOG	SPFI	55,566,002	0.504	-	0.540	0.362	0.00	-1.18	-4.00	8.22	1.28	14.43x	3.25x	2.29	1.06	30.16%	-16.78%	
GULF MUSHROOM COMPANY	GMPI	9,348,767	0.454	-	0.472	0.289	0.00	0.00	-1.30	4.48	0.40	10.03x	2.14x	4.94	0.38	115.66%	23.76%	
Cement	OMAN CEMENT CO	OCOI	223,008,408	0.674	166,526	0.700	0.413	0.00	-0.59	-0.59	56.02	0.88	16.17x	1.55x	4.45	5.14	23.93%	66.16%
	RAYSUT CEMENT CO	RCOI	267,799,988	1.339	-	1.350	0.700	0.00	-0.15	2.21	76.18	0.96	15.93x	2.70x	3.75	6.84	37.38%	111.31%
Engineering & Construction	AL-HASSAN ENGINEERING CO	AFAI	15,417,640	0.205	39,400	0.428	0.204	-0.97	-0.97	-9.29	-18.97	1.34	6.27x	0.94x	7.32	0.29	-51.78%	-62.53%
	GALFAR ENGINEERING&CONTRACT	GECS	137,807,999	0.402	218,264	0.440	0.315	-1.47	-2.66	1.01	19.29	1.45	23.78x	2.35x	2.99	1.70	25.33%	-11.31%
Textiles	OMAN TEXTILE HOLDING CO SAOG	OTHI	2,232,000	0.372	-	0.480	0.370	0.00	-1.33	-1.33	-7.23	1.18	-	0.21x	-	-0.01	-95.97%	-
	MUSCAT THREAD MILLS CO	MTMI	1,975,551	0.200	4,056	0.214	0.087	0.00	0.00	0.00	123.10	0.81	7.51x	1.43x	6.52	0.10	106.12%	-
Mining	GULF STONE	GSCI	2,976,600	0.082	-	0.082	0.078	0.00	0.00	0.00	0.22	0.35	-	0.70x	-	0.15	54.31%	-
	OMAN CHROMITE	OCCI	10,950,001	3.650	-	3.800	3.400	0.00	0.00	0.00	1.39	0.38	17.65x	2.33x	5.48	0.02	-96.02%	-108.1%
	AL-FAJAR AL-ALAMIA CO	AFAI	35,221,619	0.714	-	0.755	0.643	0.00	0.00	0.00	0.00	0.48	16.63x	1.56x	2.82	-0.11	-	-21.0%
Construction Materials Support	CONSTRUCTION MATERIALS IND	CMII	4,675,000	0.055	37,305	0.071	0.037	-1.79	-1.79	-1.79	25.00	1.50	-	0.57x	-	0.14	-424.4%	-126.4%
	CEMENT & GYPSUM PRO	O	1,500,000	1.000	-	-	-	0.00	0.00	0.00	0.00	0.33	-	-	-	-	-	-
	NATL ALUMINIUM PRODUCTS	NAPI	7,385,719	0.220	38,674	0.437	0.218	-0.90	-2.22	-4.35	-45.54	1.36	5.33x	1.01x	9.09	0.03	-90.1%	-89.4%
	ABRASIVES MANUFACTURING COS	ABMI	50,000	0.000	-	0.060	0.050	0.00	0.00	0.00	-48.45	0.76	-	-	-	-0.04	2.4%	-7.5%
	AL-ANWAR CERAMIC TILE CO	AACT	75,229,416	0.368	186,000	0.372	0.251	-0.54	-0.54	-0.54	18.89	0.82	12.92x	2.75x	3.88	1.60	5.1%	20.8%
	AL JAZEERA STEEL PRODUCTS CO	ATMI	34,222,038	0.274	35,000	0.302	0.233	-0.36	-0.36	-3.86	8.73	1.26	10.84x	1.05x	5.47	1.13	12.6%	305.3%
OMAN CERAMIC COM	OMCI	2,259,880	0.749	-	0.675	0.211	0.00	0.00	0.00	0.00	0.33	12.17x	2.00x	-	0.03	-20.3%	-32.6%	
Paper, Glass & Packaging	TAGHLEEF INDUSTRIES SAOG	AKPP	-	-	-	-	-	-	-	-	-	-	-	-	-	0.00	-	-
	OMAN PACKAGING	OPCI	6,097,968	0.188	-	0.190	0.140	0.00	0.00	0.00	17.50	0.67	7.33x	1.31x	7.98	0.32	1094.1%	-
	FLEXIBLE IND PACKAGES	FIPC	2,651,250	0.125	-	0.125	0.125	0.00	0.00	0.00	-7.41	0.40	12.84x	1.07x	-	0.05	-40.6%	-42.7%
	GULF PLASTIC INDUSTRIES CO	AKPI	389,000	0.000	-	0.389	0.389	0.00	0.00	0.00	0.00	0.33	1.99x	0.30x	-	0.09	-	-
	PACKAGING CO LTD	PCLI	1,110,000	0.370	-	0.370	0.370	0.00	0.00	0.00	0.00	0.33	3.65x	0.41x	-	3.38	105378.1%	-207.2%
Chemicals	COMPUTER STATIONERY INDS	CSII	3,250,000	0.325	-	-	-	0.00	0.00	0.00	0.00	0.33	-	1.79x	-	0.01	-77.1%	-109.9%
	AL AHLIA CONVERTING INDUS	AACI	350,000	0.035	-	0.055	0.020	0.00	0.00	0.00	-65.00	0.57	-	-	-	-0.06	2142.9%	90.9%
	MAJAN GLASS COMPANY	MGCI	19,025,093	0.498	-	0.599	0.460	0.00	0.00	0.00	-11.21	0.31	20.63x	1.53x	4.53	0.34	-31.4%	-269.4%
	GULF INTERNATIONAL CHEMICALS	GICI	3,297,000	0.157	296,892	0.212	0.112	-1.88	-1.87	-3.68	9.03	1.62	9.98x	1.19x	9.55	0.09	-35.5%	110.3%
Pharmaceuticals	OMAN CHLORINE	OCHL	30,515,383	0.494	-	0.500	0.340	0.00	0.00	0.82	12.27	0.79	10.77x	2.01x	5.07	0.73	33.4%	8.9%
	NATIONAL DETERGENTS/THE	NDTI	15,291,990	0.899	-	0.897	0.849	0.00	0.00	0.00	0.00	0.33	19.69x	1.21x	4.45	0.28	-38.0%	249.0%
	NATIONAL PHARMACEUTICAL	NPMI	5,000,000	0.100	-	0.100	0.100	0.00	0.00	0.00	0.00	0.33	4.82x	0.93x	-	0.16	126.7%	-77.2%
Electrical & Mechanical	OMAN FIBER OPTICS	OFOI	13,098,341	2.761	-	2.792	2.538	0.00	0.00	0.00	0.01	0.33	5.59x	1.34x	8.36	0.46	-3.2%	-52.2%
	VOLTAMP ENERGY SAOG	VOES	18,573,502	0.307	15,789	0.500	0.300	-0.32	-3.15	-7.53	-18.43	1.01	13.67x	1.24x	5.92	0.23	-55.6%	120.4%
	OMAN CABLES INDUSTRY	OCAI	73,105,499	0.815	129,000	0.958	0.660	-0.61	-2.04	-2.86	10.14	1.15	9.71x	1.55x	4.91	1.71	62.8%	-33.2%
OMAN FILTERS INDUSTRY	OFII	400,000	0.000	-	0.039	0.020	0.00	0.00	0.00	0.00	0.30	-	2.29x	-	-0.08	54.1%	-47.6%	
AVERAGE			1,338,047,076									12.41x	1.64x	5.42				

Source: Bloomberg. The red marked refers to Q1 results

Market performance and value indicators

Services Sector



Sub Sector	Name of Company	MKT	RO	Close	Volume	52-Wk		Share Performance %				BETA	Share Latest Ratio			N/P (RO'mn)	YOY	QOQ
		Code	Capitalization	Price		High	Low	% Δ	% Δ WTD	% Δ MTD	% Δ YTD	1Y	P/E	P/B	Div. Yld. %	Latest Calendar Qtr		
Telecommunication	OMAN TELECOMMUNICATIONS CO	OTEL	997,500,061	1.330	37,363	1.434	1.014	-0.45	-0.52	0.76	1.60	0.88	8.64x	2.23x	7.51	29.85	14.84%	2.25%
	OMANI QATARI TELECOMMUNICATI	NWRS	332,632,477	0.511	363,050	0.705	0.491	-0.20	-0.78	-1.35	-21.38	-	7.36x	2.18x	7.44	9.80	-18.97%	-17.77%
Tourism & Hospitality	GULF HOTELS (OMAN) CO LTD	GHOS	37,708,000	11.000	-	9.900	9.900	0.00	0.00	0.00	0.00	0.33	14.39x	1.37x	7.27	0.89	1.49%	-13.05%
	INTERIOR HOTELS	INHS	3,400,000	0.170	-	0.170	0.170	0.00	0.00	0.00	0.00	0.34	5.81x	0.95x	-	0.21	-17.47%	4.95%
	AL BATINAH HOTELS	BAHS	2,998,380	1.298	-	1.428	1.298	0.00	0.00	0.00	-0.01	-14.35	63.95x	1.14x	-	0.08	-	-
	AL BURAIMI HOTEL	ABHS	3,144,090	0.880	-	-	-	0.00	0.00	0.00	0.00	0.33	-	1.07x	-	-0.01	-	-0.94%
	OMAN HOTELS & TOURISM CO	OHTS	13,475,000	2.450	2,000	3.100	2.450	-8.92	-12.19	-12.19	-20.97	0.32	-	0.51x	4.08	0.64	109.29%	-
	HOTELS MANAGEMENT CO INTERNA	HMCI	8,324,578	0.100	-	0.110	0.072	0.00	0.00	0.00	26.58	0.43	-	0.73x	-	0.01	-93.25%	-
	SAHARA HOSPITALITY	SAHS	14,291,666	2.450	-	2.450	2.450	0.00	0.00	0.00	4.26	0.34	8.25x	1.20x	-	0.42	6.53%	-6.71%
	DHOFAR TOURISM	DTCS	8,000,000	1.000	-	1.100	1.000	0.00	0.00	0.00	0.00	0.38	-	0.28x	-	-0.53	-15.69%	-26.34%
SALALAH BEACH RESORT SAOG	SHCS	8,937,500	1.430	-	1.430	1.430	0.00	0.00	0.00	0.00	0.33	14.39x	1.06x	-	0.25	-	-	
Logistics	PORT SERVICE CORPORATION	PSCS	36,780,479	0.387	-	0.565	0.375	0.00	0.00	-1.28	-9.58	1.04	-	1.21x	12.85	1.35	-12.51%	137.37%
	SALALAH PORT SERVICES	SPSI	84,524,803	0.470	-	0.480	0.423	0.00	0.00	0.00	-1.88	0.28	28.30x	2.19x	3.19	1.61	63.71%	7.71%
Oil & Gas Marketing	SHELL OMAN MARKETING	SOMS	251,000,000	2.510	-	2.515	2.200	0.00	0.00	2.45	4.89	0.54	21.01x	11.62x	4.66	3.37	-16.24%	65.88%
	OMAN OIL MARKETING COMPANY	OOMS	115,132,500	1.700	100	1.800	1.370	0.00	0.00	5.93	4.39	0.44	14.20x	3.60x	3.47	1.88	0.46%	1.48%
	AL MAHA PETROLEUM PRODUCTS M	MHAS	117,300,003	17.000	60,635	17.000	10.090	2.66	2.66	6.26	25.93	0.78	13.01x	3.55x	5.00	2.50	22.36%	46.93%
	NATIONAL GAS CO	NGCI	13,249,999	0.530	-	0.600	0.460	0.00	0.00	0.00	0.38	0.35	10.65x	1.70x	7.55	0.33	-	-10.54%
	MUSCAT GASES COMPANY SAOG	MGMC	23,399,889	0.780	-	0.820	0.720	0.00	0.00	0.00	5.26	0.42	16.43x	2.97x	7.69	0.48	0.25%	154.55%
Education & Training	DHOFAR UNIVERSITY	DHUS	15,820,000	1.130	-	1.130	1.124	0.00	0.00	0.00	-5.75	0.30	-	1.41x	-	-0.01	-	-107.10%
	MAJAN COLLEGE	BACS	8,250,000	0.275	-	0.310	0.255	0.00	0.00	0.00	3.38	0.46	8.89x	1.49x	10.91	0.32	8.24%	8.24%
	NATIONAL HOSPITALITY INSTITU	NHIS	2,050,000	2.050	-	-	-	0.00	0.00	0.00	0.00	0.33	-	3.84x	-	0.01	-	-
	OMAN EDUCATION & TRAINING IN	OETI	24,639,999	0.352	-	0.544	0.265	0.00	0.00	0.00	0.00	0.22	239.95x	2.07x	0.85	-0.04	-	-
Energy	AL KAMIL POWER CO	KPCS	17,517,500	1.820	-	1.820	1.620	0.00	0.00	1.39	5.81	0.32	7.05x	1.04x	3.30	0.52	48.01%	4.41%
	DHOFAR POWER CO	DHPS	-	-	-	-	-	-	-	-	-	-	-	-	-	-	-	-
	SOHAR POWER CO	SHPS	38,002,598	1.370	499	1.750	1.330	0.00	-0.36	-2.08	-18.87	0.86	15.09x	13.93x	5.84	-1.83	-301.66%	-185.06%
	UNITED POWER CO	UECS	12,829,165	1.128	-	1.444	0.905	0.00	0.00	0.27	12.57	0.17	10.82x	0.70x	12.41	0.22	-66.82%	-24.39%
	ACWA POWER BARKA SAOG	APBS	59,200,001	0.370	115,000	0.400	0.237	-2.37	-2.37	-0.54	24.50	0.45	7.27x	9.12x	6.76	1.00	-29.60%	-60.11%
	OMAN NATIONAL ENGINEERING AN	ONES	27,860,796	0.398	-	0.437	0.344	0.00	0.00	0.00	0.94	0.56	8.53x	1.48x	3.03	0.89	12.68%	107.30%
SMN POWER HOLDING SAOG	SMNP	71,868,813	3.600	-	4.000	3.410	0.00	0.00	-0.69	-1.72	-	-	20.70x	9.36	0.01	-	-	
Diversified Commercial Services	RENAISSANCE SERVICES SAOG	RNSS	144,714,462	0.513	67,999	0.898	0.446	-1.16	-0.97	-1.91	-5.87	1.96	-	0.86x	-	0.78	-16.36%	-117.76%
	AL JAZEIRA SERVICES	AJSS	44,348,160	0.271	33,335	0.320	0.138	0.00	-3.56	-7.19	53.11	1.15	14.59x	1.58x	2.58	1.40	89.18%	-
	OMAN INTL MARKETING	OIMS	275,000	0.000	-	-	-	0.00	0.00	0.00	0.00	0.33	-	1.49x	-	0.03	-125%	-2166.67%
	OMAN HOLDING INTERNATIONAL	OHII	26,400,831	0.240	16,341	0.389	0.220	0.00	0.84	0.00	-4.38	1.01	4.34x	0.49x	6.25	4.31	58.04%	384.83%
OMAN INVESTMENT & FINANCE	OIFC	26,160,000	0.218	374,540	0.374	0.082	-0.46	0.46	0.00	17.84	1.17	7.50x	1.40x	9.17	1.39	280.30%	90.57%	
Health Care	OMAN MEDICAL PROJECTS	OMPS	8,324,578	0.100	-	0.110	0.072	0.00	0.00	0.00	26.58	0.43	-	0.73x	-	0.01	-93.25%	-
AVERAGE			2,600,061,329										23.93x	3.00x	6.42			

Source: Bloomberg. The red marked refers to Q1 results



OAB - IMG Winner of the
'Best Brokerage Award'
from MSM for
6 Consecutive Years



Research Division

Email: Research@oabinvest.com

Private Banking Division

Email: clubelite@oabinvest.com

Product Development Division

Email: b.alrousan@oabinvest.com

Asset Management Division

Email: assetmanagement@oabinvest.com

Brokerage Division

Email: brokerage@oabinvest.com

Corp. Finance & Advisory Division

Email: corporatefinance@oabinvest.com

Wealth Management-NRI

Email: d.gadhvi@oabinvest.com

Custody Division

Email: custody@oabinvest.com

Customer Services Division

Email: customerservice@oabinvest.com

PO Box 2010, Ruwi, 112, Muscat-Oman. Tel: +96824827399 Fax: +96824827367

Web site <http://www.oabinvest.com>

e-mail: research@oabinvest.com



39th International Trophy for Quality
Awarded to Oman Arab Bank SAOC
By Trade Leaders' Club

Disclaimer:

This report has been prepared by research department in IMG – Oman Arab Bank, and is provided for information purposes only. Under no circumstances is to be used or considered as an offer to sell or solicitation of any offer to buy. While all reasonable care has been taken to ensure that the information contained therein is not untrue or misleading at the time of publication, we make no representation as to its accuracy or completeness and it should not be relied upon as such, and the bank accepts no responsibility whatsoever for any direct or indirect consequential loss arising from any use of this report or its contents. All opinions and estimates included in this document constitute IMG's Research department judgment as of the date of production of this report, and are subject to change without notice. This report may not be reproduced, distributed or published by any recipient for any purpose.